

Waterlogic® Countertop Service Guide



Waterlogic® Countertop Pure Kit
K-FU-00S20-00C1L-13-0-XXX
(includes sediment filters FT-0003-L00-XXX,
carbon filter FT-0006-L00-XXX, UV lamp CT-2090-C)

Only for use with Waterlogic® Countertop
F-FWCU1-M-HCA-TT-XX-YY2

Your Guide

Thank you for purchasing the Waterlogic® Countertop Pure Kit.
Please read this manual before servicing the Countertop machine.

Index

Declarations	3
Box contents	4
12 month servicing guide	6
Product disposal	16
Performance Data Sheet	17

Declaration and Safety Precautions

Waterlogic International Ltd

1. Do not remove any panels or covers from the appliance unless acceptable in this instruction.
2. When any abnormal case happens, firstly unplug the appliance.
3. The appliance is not intended for use by persons (including children) with reduced physical, sensory or mental capabilities, or lack of experience and knowledge, unless they have been given supervision or instruction concerning the use of the appliance by a person responsible for their safety.
4. The appliance can be used by children aged from 12 years and above if they have been given supervision or instruction concerning use of the appliance in a safe way and if they understand the hazards involved. Cleaning and user maintenance shall not be made by children unless they are older than 12 and supervised. Keep the appliance and its power cord out of reach of children aged less than 12 years.
5. If the supply cord or the detachable cord sets of the appliance are damaged, it must be replaced by the manufacturer, its service agent or a similarly qualified person in order to avoid a hazard.
6. The appliance is to be supplied through a residual current device (RCD) having a rated residual operating current not exceeding 30mA.
7. The appliance is intended to be used in household and similar applications such as
 - staff kitchen areas in shops, offices and other working environments;
 - farm houses and by clients in hotels, motels and other residential type environments;
 - bed and breakfast type environments;
 - catering and similar non-retail applications.
8. The appliance contains a UV-C emitter (UV lamp)
9. Unintended use of the appliance or damage to the housing may result in the escape of dangerous UV-C radiation. UV-C radiation may, even in little doses, cause harm to the eyes and skin.
10. Appliances that are obviously damaged must not be used.
11. Read the maintenance instructions before opening the appliance.
12. The appliance must be disconnected from the power supply before replacing the UV lamp.
13. The UV lamp must be replaced at 12 month intervals or when necessary. If the unit is placed in a high use area, the UV lamp will need to be replaced more frequently.
14. **WARNING:** Do not operate the UV lamp when it is removed from the appliance enclosure.
15. In accordance with these instructions, the appliance must be properly located and installed before use.
16. Appliance must be unplugged before maintenance, cleaning, sanitizing or repairing.
17. The appliance heats water to a temperature above 203°F (95°C). Water temperatures above 125°F (52°C) can cause severe burns or death from scalding. Most at risk of being scalded are children, the disabled and the elderly.
18. Follow proper grounding safety precautions and instructions prior to plugging in appliance.
19. **WARNING:** Boil the water should the purification unit fail.
20. **Note:** Flush 2 liters of water from the system after a system failure.

Box Contents

IN THE COUNTERTOP PURE KIT BOX YOU WILL FIND:

1. Waterlogic® sediment filter



2. Waterlogic carbon block filter (CBC)



3. Waterlogic® Firewall® UV bulb



Important Note About Servicing

MODEL NUMBER: F-FWCU1-M-HCA-TT-XX-YY2

This system, when used with FT-0006-L00-XXX 1 micron CBC cyst and lead reduction filter, has been tested and certified by WQA according to NSF/ANSI 42, NSF/ANSI 53, NSF/ANSI 55 Class A and NSF/ANSI P231 as verified and substantiated by test data.

To ensure the highest quality of water and compliance with NSF Protocol P231, the Countertop model that is on sale in the US includes a 1 micron carbon block filter with cyst & lead reduction capabilities, and a 13 Watt UV-C lamp, that requires periodic replacement (annually, in most cases).

Please ensure you purchase only original Waterlogic replacement parts sold in the US.

Part numbers:

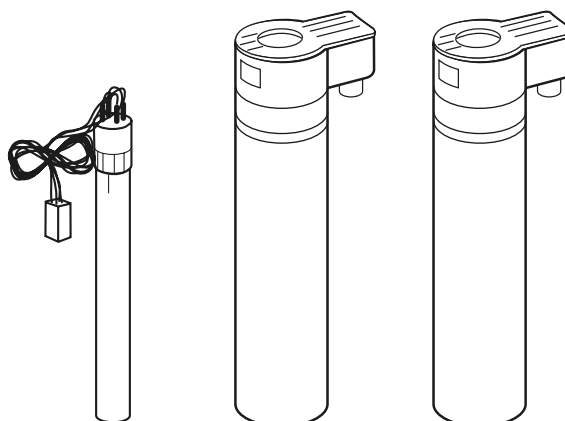
- The Countertop Pure Kit which is sold in the US: K-FU-00S20-00C1L-13-0-XXX
- Sediment filter assembly included in the Countertop Pure Kit: FT-0003-L00-XXX
- Carbon block filter assembly included in the Countertop Pure Kit: FT-0006-L00-XXX
- UV lamp included in the Countertop Pure Kit: CT-2090-C

** Please note the letters “XXX” can be any 3 letters.

Where to buy

the Hybrid Pure Kit is available from the retailer where you purchased your machine, call us if you want more details

 1-800-574-0435



CT-2090-C
UV lamp

FT-0003-L00-XXX
Sediment Filter

FT-0006-L00-XXX
Carbon Block Filter

Do not use with water that is microbiologically unsafe or of unknown quality without adequate disinfection before or after the system.

Systems certified for cyst reduction may be used on disinfected waters that may contain filterable cysts.

12 Month Servicing Guide

- Servicing of the Countertop needs to take place every 12 months. Operational, maintenance, and replacement requirements are essential for the water-treatment device to perform as represented
- During the 12 month service it is recommended you de-scale the hot tank in order to remove any calcium build up inside the tank, just like you would a kettle. Please use the Waterlogic Countertop De-scaling Kit. If you do de-scale the machine, please do so prior this service procedure
- The filter and UV lamp must be replaced at this service
- Some units may have screws holding the lid on that will need to be unscrewed before the lid can be removed. This will be model dependant. Screws will need to be put back when the lid is replaced
- Servicing must be performed by an adult

WHAT YOU ARE GOING TO NEED WHEN SERVICING THE WATERLOGIC COUNTERTOP



Latex rubber gloves

Recommended



Phillips / cross head screwdriver



A container that can hold 5 litres



Countertop Pure Kit, which includes a sediment filter, a carbon filter and a UV lamp

Please make sure you use only original Waterlogic replacement parts. If you are not sure which replacement parts to use, please consult with your local Waterlogic retailer or distributor

1. PREPARING FOR SERVICE

1.1 Put on the rubber gloves to minimise the chance of any contamination to the machine.

1.2 Turn off the incoming water supply at the isolation point

1.3 Select the cold water icon until it lights up. Whilst the cold water icon is lit select and hold the central dispense button, when the water stops flowing release the button and continue to step 1.3. (see picture A)



A)

1.4 Turn off the red and green power switches at the back of the Countertop to the '0' position and remove the power lead from the wall socket and machine (see picture B)

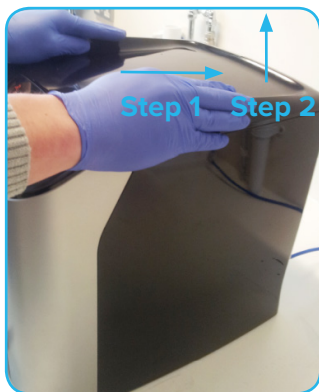


B)

1.5 Remove the top cover from the machine by placing your hands on the top of it, pushing it backwards (step 1) and lifting it upwards (step 2) (see picture C). You may be required to remove two screws at the back of the machine to enable you to remove the top cover (this is dependant on the machine model)

Note: you may need to move the machine from under wall units to allow access. This is why it is important you fit an extra 15-30cm of the flexible tubing from the water supply when installing the unit.

Please take care not to dislodge the flexible tubing connection.



C)

2. REPLACING THE CARBON BLOCK FILTER

2.1 Insert your finger into the loop at the top of the carbon block filter (the filter that is closer to the front of the machine) and pull it up until it is in the vertical position (see picture D)



The carbon block filter is closer to the front of the machine

D)

2.2 Remove the filter by pulling straight upwards on the filter loop (see picture E)



E)

2.3 Insert the new carbon block filter assembly into its cradle, with the filter loop on the left (see picture F) , which enables the filter shape to perfectly fit the cradle profile



F)

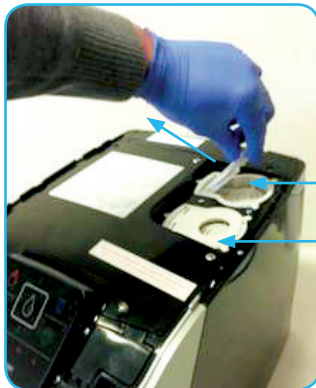
2.4 Push the filter firmly into place until the filter sits snugly and is flush with the cradle top surface then lock the filter into place by closing the locking lever until it 'clicks' into place (see picture G)



G)

3. REPLACING THE SEDIMENT FILTER

3.1 Insert your finger into the loop at the top of the sediment filter (the one which is closer to the back of the machine) and pull it up until it is in the vertical position (see picture H)



Sediment filter (some machines may not have this option, due to better water conditions in some regions)
Carbon block filter

H)

3.2 Remove the filter by pulling straight upwards on the filter loop (see picture I)



I)

3.3 Insert the new sediment filter assembly into its cradle, with the filter loop on the left (see picture J), which enables the filter shape to perfectly fit the cradle profile



J)

3.4 Push the filter firmly into place until the filter sits snugly and is flush with the cradle top surface then lock the filter into place by closing the locking lever until it ‘clicks’ into place (see picture K)



K)

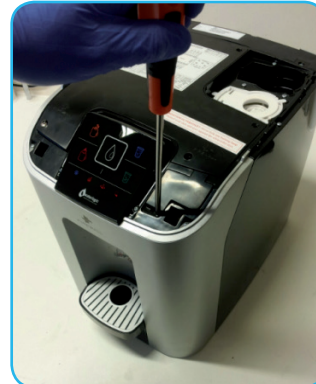
4. REPLACING THE UV LAMP

4.1 Remove the UV lamp protective cover from the front right hand side of the machine by undoing the fixing screw and lifting the cover up (see pictures L & M)



**UV
protective
cover**
**UV
protective
cover fixing
screw**

L)



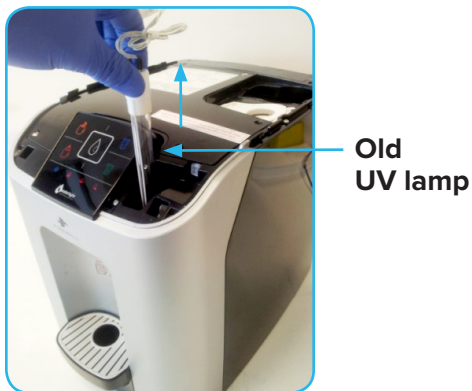
M)

4.2 Disconnect the UV lamp connector by pressing in the clip on the side of the connector (step 1) and pulling the connector towards the front of the machine (step 2) (see picture N)



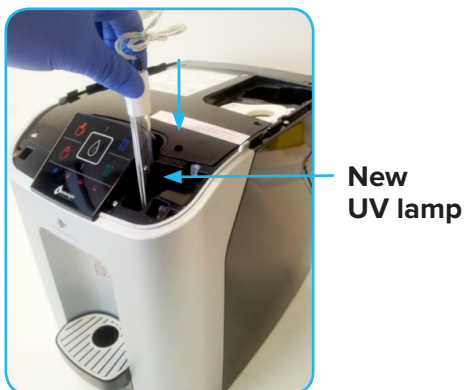
N)

4.3 Holding onto the white end cap of the UV lamp, pull firmly upwards to remove the lamp. Make sure you do not pull the lamp out at an angle, as you may risk breaking or damaging the machine's internal components (see picture O)



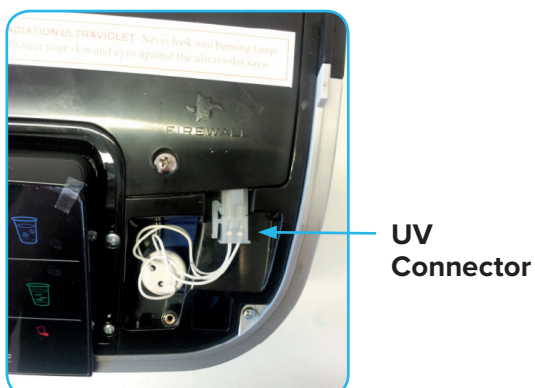
O)

4.4 Take the new UV lamp and insert it into the same position at the front of the machine where the old lamp was positioned, making sure you hold the lamp only by the white end cap (see picture P). Please take care when inserting the lamp to avoid breaking it - ensure that it is fully vertical when you insert it, and do not use excessive force



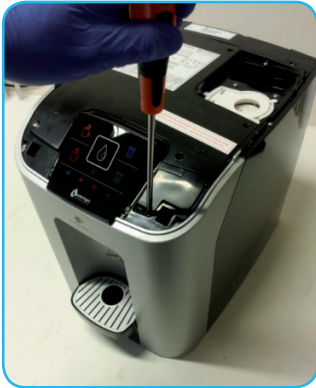
P)

4.5 Insert the connector on the new UV lamp into the UV connector in the machine (see picture Q)



Q)

4.6 Refit the UV lamp protective cover and secure it in place with the fixing screw (see picture R)



R)

4.7 Refit the top cover onto the machine by placing into position, making sure the two fixing lugs at the front are lined up with the grooves (step 1) and then pulling the cover firmly towards yourself until it clicks into place (step 2) (see picture S). If your machine has screws holding down the top cover, screw them back in at this stage. Hand tighten only.



S)

4.8 Reconnect the power lead into the back of the machine and then insert the plug into the wall socket (see picture T)



T)

4.9 Turn on the red power switch on the back of the machine to the “I” position.



Turn on the red switch

U)

5. FLUSHING THE NEW FILTERS

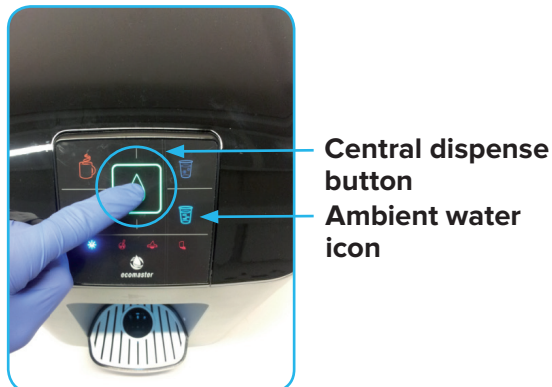
5.1 Turn on the incoming water supply at the isolation point.

5.2 Place your container in the machine’s dispense area for the flushing process (see picture V).



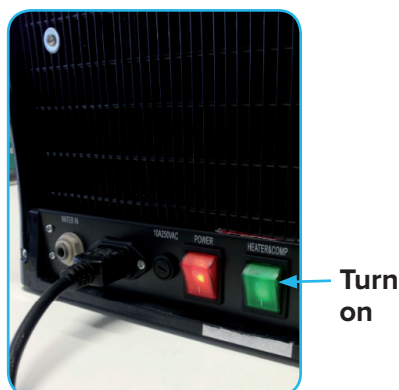
V)

5.3 Select and hold the ambient water icon until it lights up. Whilst the ambient water icon is lit, select and hold the central dispense button to start dispensing water. Continue to hold the dispense button until 8 litres of ambient water has passed through the machine. Once 8 litres has passed through release the dispense button and the water flow will stop. This will sufficiently generate the filter and flush it of any excess carbon fines.



W)

5.4 Turn on the green heater / compressor switch at the back of the Countertop to the 'I' position (see picture X).



X)

6. CHECKING THE MACHINE FUNCTIONS AND WATER QUALITY

6.1 The machine will now begin to heat / chill the water. The hot water should be up to operating temperature after 8-10 minutes and the cold water will take between 60-90 minutes to cool.

6.2 The water should now be taste tested, if there is any hint of taste in the water then flush an additional 5 liters of hot and then 5 liters of cold. Do another taste test and if necessary repeat.

7. RESETTING THE FILTER TIME

7.1 To reset the filter timer, hold down the hot and cold icons simultaneously for 10 seconds, until the appliance “beeps”. If the filter warning indicator was lit, it should disappear at this stage.

Product Disposal

At the end of this products life, please ensure that it is disposed of in an environmentally friendly manner which is in line with your Country requirements/guidelines.

WEEE (EU ONLY)

Please be aware that our products are covered by the Waste Electrical and Electronic (WEEE) directive (2002/96/EC). The symbol shown above denotes that the product should not be disposed of with general/household waste. Hand it in at an official collection point for recycling.

ROHS

All Waterlogic machines comply with EC Directive (2002/95/EC) on the Restriction of the Use of Certain Hazardous Substances in Electrical and Electrical Equipment (RoHS).

Performance Data Sheet

MODEL NAME: F-FWCU1-M-HCA-TT-XX-YY2 WATERLOGIC COUNTERTOP WATER PURIFIER WITH CYST/LEAD REMOVAL FILTER FT-0006-L00-YYY AND SEDIMENT REMOVAL FILTER FT-0003-L00-YYY

XX: COLOR CODE, -YY2: CUSTOMER CODE

IMPORTANT NOTICE



This system, when used with FT-0006-L00-WLT 1 micron CBC cyst and reduction filter, has been tested according to NSF/ANSI 42, NSF/ANSI 53, NSF/ANSI 55 Class A and NSF/ANSI P231 for the reduction of the substances listed below.

The concentration of the indicated substances in water entering the system was reduced to a concentration less than or equal to the permissible limit for water leaving the system, as specified in NSF/ANSI 42, NSF/ANSI 53, NSF/ANSI 55 Class A and NSFANSI P231. While testing was conducted under standard laboratory conditions, actual performance may vary.

Filter Performance Data Table						
Parameter	Minimum % reduction requirement / Max effluent concentration	Average Influent Challenge	Effluent Average	Effluent Maximum	Percent Reduction Average	Percent Reduction Minimum
Chlorine	>=50% reduction	1.90 ppm	0.02 mg/L	0.02 mg/L	98.9%	98.9%
Cyst	>=99.95% reduction	120,000 oocyst/L	38 oocyst/L	< 50 oocyst/L	99.99%	99.97%
Lead (Low pH = 6.5)	< 10 ug/L	144 ug/L	0.49 ug/L	1.60 ug/L	99.7%	98.9%
Lead (High pH = 8.5)	< 10 ug/L	140 ug/L	1.47 ug/L	7.50 ug/L	98.9%	94.6%
Particulate Class I (>=0.5 um to <1 um)	>=85% reduction	>=10,000 particles/ml	288 particles/ml	704 particles/ml	97.9%	94.9%

Tested using flow rate=0.5 GPM; pressure=60 psi; pH=7.5 ± 0.5; temp.=20 ± 1.0 °C.

UV Performance Data Table

Parameter	Log Reduction Average
Bacteria (R.terrogema)	7.4 Log
Virus (MS2)*	3.16 Log

Note: 2 Log reduction of MS2 is equivalent to 4 Log reduction of Poliovirus or Rotavirus

Tested using flow rate=0.5 GPM; pressure=60 psi; pH=7.5 ± 0.5; temp.=20 ± 1.0 °C.

Operating Specifications

Filter Capacity	2,500 Gallons / 9,464 Liters
Lead Capacity	1,250 Gallons / 4,732 Liters
Maximun Flow Rate	0.34 GPM / 1.3 LPM
Feed Water Temperature	2 °C / 35 °F - 32 °C / 90 °F
Operating Temperature	5 °C / 41 °F - 30 °C / 86 °F
Working Pressure	0.26Mpa / 37.7Psi - 0.414Mpa / 60 Psi
Electrical Requirements	EU: 220-240V 50Hz / maximum 3.0 amps; USA: 120V 60Hz / maximum 6.2 amps

GENERAL INSTALLATION/OPERATION/MAINTENANCE REQUIREMENTS

- This appliance is for use with potable drinking water only. Never use this appliance with unknown or unsafe sources.
- Flush the hot tank, cold tank and filters as instructed.
- Replace filter cartridge when rated capacity is reached, or every 12 months, or when flow becomes to slow.
- Replace UV lamps every 12 months, or when the UV intensity is lower than required.
- Install in compliance with state and local laws and regulations.

Manufactured by Qingdao Waterlogic Manufacturing Co., Ltd
No 10 Jinling Road, Jinling Industrial Zone, Chengyang District, Qingdao, 266111,
Shandong, P.R. CHINA TEL: +86-532-87909132

SPECIAL NOTICES

- The contaminants or other substances removed or reduced by this water treatment system are not necessarily in your water.
- Do not use with water that is microbiologically unsafe or of unknown quality without adequate disinfection before or after the system.
- System certified for cyst reduction may be used on disinfected waters that may contain filterable cysts.
- This Class A system conforms to NSF/ANSI 55 for the disinfection of microbiologically contaminated water that meets all other public health standards. The system is not intended to convert wastewater or raw sewage to drinking water. This system is intended to be installed on visually clear water.
NSF/ANSI 55 defines wastewater to include human and/or animal body waste, toilet paper, and any other material intended to be deposited in a receptacle designed to receive urine and/or feces (blackwaste); and other waste materials deposited in plumbing fixtures (greywaste).
- Performance may vary based on local water conditions seconds.

WARRANTY

Waterlogic International (Waterlogic) warrants that the products delivered will be free from any defects in workmanship or materials. Further, the warranty provided here in applies, only when used within the products specifications and service life, from the date of installation, beyond which time or use Waterlogic is absolved of any and all liability for any use of the product. In the event of defect or non-conformity, buyer shall promptly notify Waterlogic in writing, supplying proof of purchase dates, installation dates, and will protect and retain the products for investigation, or Waterlogic is absolved of any and all liability for any use of the product. There are no other warranties, either merchantability or fitness, either expressed or implied.

FOR IOWA ONLY

The Manufacturer's PDS shall be given to the buyer by the seller and shall be signed and dated by the buyer and the seller prior to the consummation of the sales of the water treatment system and retained on file by the seller for a minimum of two years.

Seller _____ Date _____

Buyer _____ Date _____

We hope you love drinking good water as much as we do.
Please let us know your thoughts by email to
goodwater@waterlogic.com

To speak to a Water Expert,
please refer to your Guarantee
and After-sales service card
for contact details.