

Select the Pittsburgh Corning Glass Block Pattern that best suits you and your home!

Choose from three distinct patterns, each offering its own unique style, degree of light transmission and privacy. Perfect for replacement or new-window and small-partition applications. Prefabricated panels are available with or without vents.



DECORA® Pattern, with its trademark wavy undulations, provides maximum light transmission with subtle visual distortion.



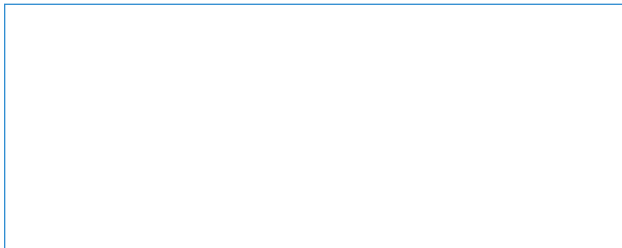
IceScapes® Non-Directional Pattern lets light in without sacrificing privacy. Maximum light transmission with a maximum degree of privacy.



DELPHI® Pattern, with prismatic diamond design, provides moderate light transmission with maximum privacy.

Comparison		
	Single Pane Window — 1/8" Flat Sheet	Pittsburgh Corning Mortared Glass Block Window
Energy Efficiency	Minimal insulating value.	Comparable to a double pane window. Eliminates drafts.
Window Treatment	Needed to control privacy, thus adding extra costs.	No need. Privacy controlled by pattern selection.
Security	Susceptible to breakage, entry and loss of household contents.	Resists breakage and entry. Reduces the risk of burglary.
Maintenance	Dependent upon framing selection.	No maintenance.
Replacement	Breakage requires replacement of whole window.	Simple block replacement at minimal cost.
Water Penetration	Could be problem with below-grade installation.	Water resistant. Acts as solid concrete block wall.
Cost	Windows made with Pittsburgh Corning Glass Block are often less expensive. Check with your local distributor.	Very comparable or less expensive.

The information contained herein is accurate and reliable to the best of our knowledge. But, because Pittsburgh Corning Corporation has no control over installation workmanship, accessory materials or conditions of application, NO EXPRESS OR IMPLIED WARRANTY OF ANY KIND, INCLUDING THOSE OF MERCHANTABILITY OR FITNESS FOR A PARTICULAR PURPOSE, IS MADE as to the performance of an installation containing Pittsburgh Corning products. In no event shall Pittsburgh Corning be liable for any damages arising because of product failure, whether incidental, special, consequential or punitive, regardless of the theory of liability upon which any such damages are claimed. Pittsburgh Corning Corporation provides written warranties for many of its products, and such warranties take precedence over the statements contained herein.



PITTSBURGH CORNING CORPORATION
800 Presque Isle Drive
Pittsburgh, PA 15239-2799
1-800-624-2120 (Glass Block Resource Center)
pittsburghcorning.com

© 2009 Pittsburgh Corning Corporation. All trademarks and registered trademarks in this brochure are owned and protected by Pittsburgh Corning Corp., Pittsburgh, PA 15239
Printed in U.S.A. GB-265 250M 4/09

RESIDENTIAL PRODUCTS



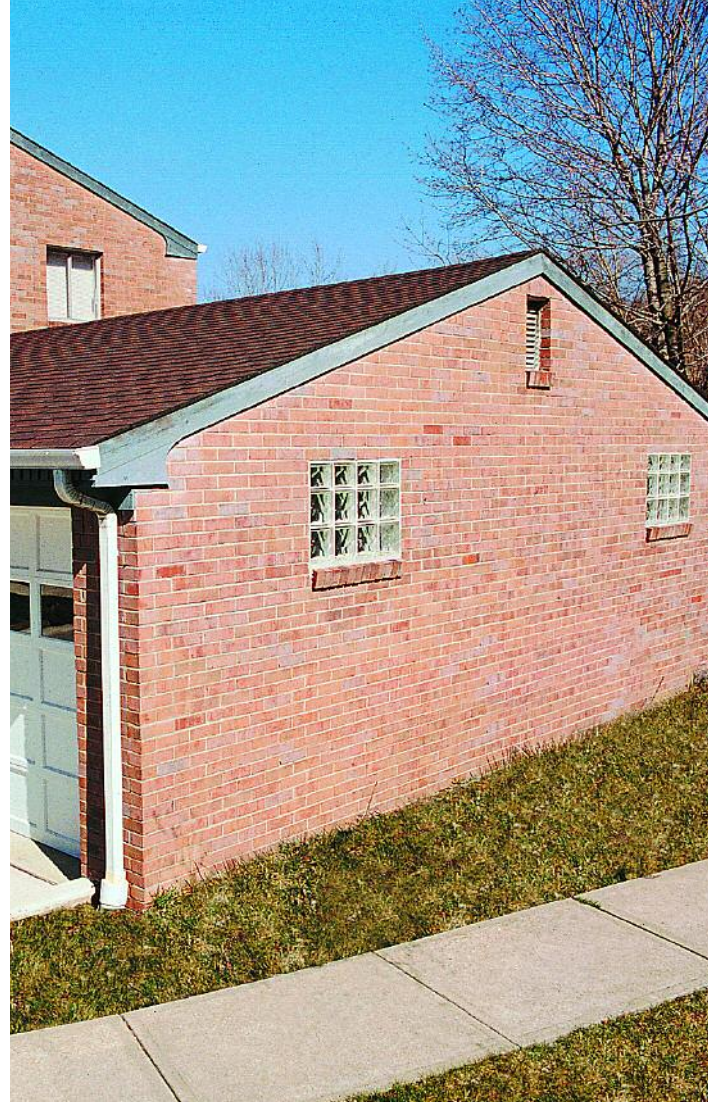
Quality Made in America.



Add Beauty and Security to Your Home



- Pittsburgh Corning Glass Block windows and panels use natural and artificial light to produce beautiful and dramatic effects...adding distinctive visual appeal to your home
- Install in a basement, entryway, kitchen, bathroom, family room, living room...anywhere
- Enhance your home security with a safe, secure window



Prefabricated Windows: Security with Over 60 Years of Proven Performance

- Pittsburgh Corning Glass Block panels are available prefabricated
- Choose standard or custom sizes... with or without ventilation
- Local Pittsburgh Corning Authorized Distributors can provide professional assistance and quick, easy installation
- Pittsburgh Corning Glass Block is the No. 1 brand used by consumers, architects and builders
- Rated No. 1 in quality, color, clarity and consistency
- Only American-made glass block
- Over a million basement windows installed in the U.S.
- Warranty and overall value with a long term commitment to your satisfaction



Cost Savings with Low Maintenance



- Eliminate the need for storm windows
- Reduce the costs for heating and air conditioning
- No painting, caulking or puttying required with nothing to peel, rot or rust
- Simply hose the outside and wipe the inside lightly with a damp cloth

