

SOTERRASLATE™

Table of Contents

✓ Product Warnings	
✓ Safety Guidelines	
✓ Kit Contents	
✓ Required Tools	
✓ Preparation Tips	
✓ Cleaning & Maintenance	
✓ Surface Repair	
✓ Installation Procedure	
• Work Area & Preparation.....	6
• Templating & Measuring.....	9
• Cutting Panels.....	12
• Making Curved Cuts for Panels.....	14
• Installing Panels.....	15
• Valve & Shower Head Holes-Coring.....	18
• Cutting Design Strips.....	19
• Installing Design Strips.....	20
• Cutting Trims.....	22
• Installing Trims.....	24
• Installing Knee Wall.....	26
• Installing Soap Dishes.....	27
• Silicone & Clean up.....	29
• Warranty Information.....	30

Remember – Safety First

Important Notice

Surfacing Products International (SPI), the makers of the SoterraSlate Systems and Panels, cannot anticipate every possible circumstance that might involve a potential hazard during the installation of our product(s). The warnings and instructions in this installation guide are, therefore, not all-inclusive. If a tool, installation procedure, or work method that is not specifically recommended by SPI is used, you must satisfy yourself that it is safe. You should also make sure that the SoterraSlate product(s) will not be damaged by the methods you choose. SPI will not be held responsible for water damage of any kind in connection with the installation of one of our SoterraSlate bath, shower, and panel kits.

To avoid product damage, personal injury, carefully read, understand, and follow all the instructions in this installation guide before installing this product(s). Do not use cleaning fluids or operate power tools unless you read and understand the instructions and warnings in this and all other applicable labels or manuals. Proper use of tools and the products described in this guide is your responsibility.

IMPORTANT NOTICE
IMPORTANT NOTICE: Indicates that equipment or property damage can result if instructions are not followed.



Read and Understand the Directions

It is the responsibility of any individual who installs or maintains this product to fully understand and follow proper installation and maintenance procedures. Be aware of the inherent dangers in the use of power tools when installing this product. Read and understand all Warnings, Cautions, and **Important Notices in this manual.**



Work Safely

DO NOT proceed if any doubt arises about the correct or safe method of performing anything found in this or other SoterraSlate manuals. The installation of this product can require using power tools. Do not use power tools without adequate training. If necessary, hire or consult a trained professional for expert assistance before continuing.



Use Proper Tools

expert assistance before continuing. Always use proper tools which are in good, working condition during the installation of the SoterraSlate products. Using tools other than those listed could adversely affect the integrity of floors, pipes, walls, or this product and could result in water damage or other damage to floors, pipes, walls, or other portions of your building or home.



Do Not Use Nails

The panels mount to walls with Loctite 5570 & 3370 adhesives only. Never use hammers, nails, or screws. Hammers, nails, and screws could adversely affect the integrity of this product. Nails and screws could puncture the SoterraSlate Wall Systems and Panels, resulting in water or other damage to floors, pipes, walls, or other portions of your building or home.



Inspect Before Cutting

Make sure no electrical wiring or plumbing is present before cutting into a wall to install any accessories.



Wall Conditions

Inspect the walls before installing the SoterraSlate panels. Never install panels over damp walls or an existing mold condition. **CAUTION: Indicates a potentially hazardous situation which, if not avoided, may result in injury. It may also be used to alert against unsafe practices.**



Use Proper Installation Methods

Follow all instructions related to wall surface preparation. Failure to follow such instructions could cause the panels to detach from the wall surface after installation, resulting in personal injury. Failure to follow these instructions could result in water damage.



Lifting Hazard

According to the National Institute for Occupational Safety and Health, the recommended maximum safe lifting weight is 51 pounds, with all lifting conditions perfect—minimal forward reach, steady load close to the body, straight back, load between knees and shoulders, and good grips. To avoid personal injury, always use these proper lifting techniques and use two people to move cartons weighing more than 51 lbs. **The box containing the SoterraSlate kits weigh 35 pounds.** Use the appropriate lifting devices to move the load. Always use two people when lifting heavy or bulky cartons. DO NOT attempt to lift objects that are too heavy. **WHEN CARRYING A HEAVY LOAD—GET HELP!**



Slipping Hazard

Do not install this product in the presence of water. Installing this product without drying all surfaces, or in the presence of water, could cause you to slip and fall due to wet floors or spilled fluids. Personal injury can result from slips or falls. Before installation, dry all surfaces, including the floor, with a cloth or paper towel. Clean up all water or spilled fluids immediately.



Tripping Hazard

Personal injury can result from tripping over power cords, tools, or other items. DO NOT leave items laying around the work area.



Personal Protection

Be sure to use all personal protective equipment, such as sturdy work boots, preferably with steel toes, gloves, and hard hat, if necessary, to ensure your own safety. To prevent possible damage to your hearing, always wear ear protection, such as earmuffs or earplugs, when working around power tools.

Safety Guidelines



Cutting Hazard

The installation of the SoterraSlate product may require using power tools. Keep hands away from the cutting edge of any tool used in the installation of our product. Placing fingers in or around the cutting blades could result in serious personal injury.



Sharp Edge Hazard

After cutting the edge of a SoterraSlate panel, it can be sharp. Wear protective gloves to prevent personal injury.



Room Temperature

Allow the SoterraSlate panels and sealants to adjust to room temperature for at least six hours before installation. The panels should be installed at temperatures not less than 65° F. Panels should not be installed in areas where the temperature may drop below freezing (32° F). Failure to follow this recommendation could adversely affect the silicone sealants which holds the panels to the wall. If the panels are not correctly adhered to the walls, they may fall off, causing possible injury to someone in or around the shower enclosure.



Grab Bars

We recommend that shower compartments be equipped with support grab bars that comply with the most recent edition of ANSI-A117.1 requirements. Grab bars must be anchored to structural support (wall studs) behind the panels. Do not rely on the panels only for grab bar support! **WARNING: Indicates a potentially hazardous situation which, if not avoided, could result in serious injury or death.**



Eye Protection

Be sure to use all personal protective equipment to ensure your own safety. To avoid eye injury, always wear protective glasses with side shields when using power tools. Also, make sure no one else can be injured by flying particles when using power tools.



Solvents Hazard

Follow all manufacturer's safety instructions for silicone sealants and denatured alcohol. Alcohol vapors are both flammable and hazardous to breathe. Silicone vapors may irritate eyes and nose. Personal injury can result from improperly handling or use of products such as denatured alcohol. Always follow the manufacturer's recommendations for the safe use of these products. Ventilate any work area before beginning to apply silicone sealants, cleaning agents, or solvents.



Fumes Hazard

The fumes from the silicone and solvents used by the installer can be harmful if used in an unventilated room. Always work in a well-ventilated area. To keep the area well-ventilated, open windows and use exhaust fans. If adequate ventilation is not achievable or practical, use respiratory protective equipment.



Dust Hazard

When cutting or drilling the SoterraSlate product, use a dust collection method which prevents dust particles from going into the air. Always work in a well-ventilated area. Always use an OSHA approved dust mask when cutting, drilling, or sanding SoterraSlate products.

Precautions must be taken when working with Slate Veneer due to the fiberglass composition of the backing materials. ALWAYS use the proper type gloves, goggles, and dust mask when cutting Slate Veneer. When using a saw ALWAYS be sure to take proper precautions to cover skin, eyes and

lungs from fiberglass dust. When cutting Slate Veneer properly filter equipment exhausts when cutting with saws, grinders, or sanders. AVOID BREATHING SILICA DUST. This product when cut, drilled, or abraded produces dust containing Free Silica which may cause cancer or delayed lung injury (Silicosis) if inhaled. Work outdoors, in a well ventilated area, or use mechanical ventilation. Industry standards recommend a NIOSH/MSHA approved respirator for this type of material. If in dusty areas or where airborne dust exceeds PEL wear NIOSH/MSHA approved respirator. This product contains one or more chemicals known to the State of California to cause cancer. See Material Safety Data Sheet for detailed information.

Safety Guidelines

WARNING: Continued



Power Tool Hazard

To prevent personal injury or possible death, always follow the electrical safety recommendations of the power tool's manufacturer. Do not use power tools in an unsafe manner. Power tools should only be connected to a circuit protected by a ground-fault circuit interrupter (GFI).



Shock Hazard

Never use electric power tools around water, condensation, or other liquids. Electric shock can cause severe burns, significant injuries, and even death. If an extension cord is required, always use an OSHA approved extension cord. Power cords should only be connected to a circuit protected by a ground-fault circuit interrupter (GFI).



Electrical Shock Hazard

Contacting live electrical wiring with power tools or hand tools can cause serious injury or death. Make sure all related circuit breakers are turned OFF. Test for live circuits or wiring inside any wall where installation of the SoterraSlate product requires cutting into a wall.



Electrocution Hazard

Water and other liquids conduct electric current and can create a short circuit, resulting in injury or death. Keep all liquids away from electrical cords and power tools. DO NOT create a short circuit between a source of electricity and a liquid by being in contact with both simultaneously.

Tool List

General Information

Required Tools

Ryobi CSB123 12 Amp 7-1/4 in. Circular Saw - [Tool Department](#)

7 in. Diamond-Edge Tile Circular Saw Blade - [Tile Department](#)

Johnson 98 in. Aluminum Cutting Level - [Tool Department](#)

BRUTUS 1-3/8 in. Tile Hole Saw - [Tile Department](#)

Johnson Rafter Angle Square - [Tool Department](#)

Arrow Fastener Mini Glue Gun - [Tool Department](#)

Arrow Fastener 0.25 oz. All-Purpose Clear Mini Glue Sticks (24-Pack) - [Tool Department](#)

Gundlach Laminate "J" Roller - [Flooring Department](#)

(2) 2 in. Spring Clamp - [Tool Department](#)

Jorgensen 2 in. x 12 in. Light-duty Bar Clamp - [Tool Department](#)

Husky 13-1/4 in. Scissors (2-Pack) - [Tool Department](#)

QEP 5-1/2 in. Extra-Large Grouting Sponge - [Tile Department](#)

QEP 4 in. Economy Grout Float - [Tile Department](#)

QEP 4 in. V-Notch Wall Trowel - [Tile Department](#)

Roberts Cove Base Adhesive Nozzle Applicator- [Flooring Department](#)

Workforce 29 oz. Caulk Gun

Other Items Needed

Measuring Tape

Drill

Level (3 Foot or more)

Set of saw horses

4' x 8' piece of plywood(table)

Denatured Alcohol

Dust Mask

Safety Glasses

Plastic Gloves

#2 Pencil

Caulk Gun

Kit Contents

Confirm that all parts of this kit have been included before beginning installation.

Safety Guidelines General Information

Unpacking

Use care when opening the box so that you do not damage the panels or components.

This product is shipped to you or your retail center after careful inspection. After purchasing the kit, carefully unbox and inspect the product for any shipping damage that may have occurred. If damage is found, report it immediately. After inspection and during installation,

protect the products from construction damage, by moving them to another room or area until ready to install.

Do not store the panels outside of the original packaging.

Please use the model number located on the side of the box or the front of this manual when contacting us with questions concerning the installation of this unit.

Make sure the walls are the correct size and are in good condition. Installation of damaged product will void the warranty.

Helpful Hints

Read these instructions carefully and familiarize yourself with the various parts of the kit.

The variety of installations possible for this kit may require procedures other than those shown. Ensure construction is correctly sized, plumb, and square.

Save the large cardboard box along with the panel protective sheets for protection of the shower floor or bathtub during the installation process and to use as a template.

Allow sufficient time for the parts in this kit to adjust to room temperature. We do not recommend installation of this product at temperatures below 50 degrees.

Sawhorses with plywood or (3)2"x12" pieces or a worktable are helpful during the installation process.

Store unused materials away from the work area to prevent accidental damage.

If the shower is placed over a garage or on an outside wall, care must be taken to ensure that the shower is properly insulated from cold temperatures.

Preparation Tips

Measure the width of the back wall installed.

This measurement cannot exceed the width of the SoterraSlate back panels. If the wall opening is too large, other methods or two panels will be required to cover the wall.

Turn off the hot and cold water supply.

Remove faucet handles, escutcheons, filler spouts, and/or anything mounted to the wall (i.e. towel bars, soap dishes, etc.).

Always measure the location of the plumbing cutouts from the back wall forward and from the ledge of the shower base or bathtub upward.

Ensure all plumbing or electrical work inside the walls is finished prior to installation of the wall panels.

Prepare the area with concrete board.

Never install our products directly on any structure that is, or may become, wet or damp.

Trial fit the side panels before you begin.

Walls must be solid, plumb, and square within 1/8" of true. Shim or trim the opening, as required. This kit has been designed with some adjustability for minor alignment problems.

The mounting surface must be free of dirt, film, waxes, or any other residues.

Caulking Tips

Follow the instructions on the caulking tube.

When job is complete, inspect all caulked areas for gaps and fill as needed.

Clean up any excess silicone caulk that was missed using denatured alcohol and a clean cloth.

Be very careful not to disturb caulk joints.

General Information

770-360-5628 SPI – SoterraSlate

SoterraSlate panels can be installed over a variety of products. If you intend to apply the panels to any surface other than those described, consult with a professional contractor. Use the following sections when installing this product over:

SHEETROCK/GREENBOARD/CEMENTBOARD/
WOOD
CEMENT/CONCRETE
OLD TILE
WALLPAPER
MASONITE

Sheetrock, Greenboard, Cementboard, or Wood

Surface must be dry, smooth, and free of any dust, soap scum, or any other contaminants.

To ensure proper adhesion of the SoterraSlate product, the wall surface must be sealed with a water or oil-based primer/sealer.

After the primer/sealer is completely dry, complete the installation following the instructions in this manual.

Cement/Concrete

Depending on the condition (flatness) of the existing wall surface, additional silicone may be required to ensure contact between the substrate and the wall panel.

To ensure proper adhesion of the SoterraSlate product, the complete area must be sealed with two coats of water or oil-based primer/sealer.

After the primer/sealer is completely dry, complete the installation following the instructions in this manual.

Old Tile

Depending on the condition of the existing wall surface, additional adhesive may be required to ensure contact between the substrate and the wall panel.

Old ceramic tiles, if solidly adhered, do not need to be removed. All plastic tiles must be removed.

Remove or reattach any loose ceramic tiles. Old tiles and front edge ceramic tiles should be reset for appearance only.

Remove any tile accessories attached to the walls.

Remove the bottom row of tile and cut a ventilation gap in the substrate.

Surface must be dry, smooth, and free of any dust, soap scum, or any other contaminants.

Complete the installation following the instructions in this manual.

Note: If using a trim kit, old tiles may need to be removed to allow a proper fit.

Wallpaper

All wallpaper must be removed from the area being covered. Clean the wall surface to remove any dust, soap scum, or any other contaminants. The wall surface must be dry and smooth.

To ensure proper adhesion of the SoterraSlate product, the complete wall surface must be sealed with two coats of water or oil-based primer/sealer.

After the primer/sealer is completely dry, complete the installation following the instructions in this manual.

Masonite

Clean the wall surface to remove any dust, soap

scum, or any other contaminants. The wall surface must be dry and smooth.

To ensure proper adhesion of the SoterraSlate product, the wall surface must be sealed with a water or oil-based primer/sealer.

After the primer/sealer is completely dry, complete the installation following the instructions in this manual.

Installation Procedure

Followed carefully, these installation instructions will result in an easy, trouble-free installation of your SoterraSlate product. Any deviations, additions, and/or deletions from the prescribed installation, without prior written approval, will void the warranty covering this product. Not following the directions could also result in personal injuries, water damage, and other damage to floors, pipes, walls, and other portions of your building or home.

Disclaimer

The information contained in this Installation Manual is given free of charge. It is based upon technical data which we believe to be reliable and is intended for use, by persons having knowledge of this technical area, at their own discretion and risk.

SoterraSlate assumes no responsibility for results obtained or damage incurred from the use of this material either in whole or in part by the buyer.

This manual will give you basic instructions for the installation of the product in a step-by-step sequence that will work in most types of installations. If you have an installation application that is not covered in this manual, please call your local SoterraSlate distributor or contact SPI directly for additional information about your application.

Follow all installation instructions. Failure to follow these instructions could result in personal injuries, water damage, or other damage to floors, pipes, walls, or other portions of your building or home.

Filler Boards

If an existing wall covering (i.e. tile) does not extend to a height equal to the height of the panel, it will be necessary to install a filler board to that height. The filler board must equal the thickness of the existing wall covering (tile). Usually, 1/4" masonite or similar material is adequate. If desired, the filler board can extend from the top edge of the tile to the ceiling.

Failure to use a filler board to properly install the panels could result in water damage or other damage to floors, walls, or other portions of your building or home.

Work Area:

- 1 For best results, use a piece of plywood that is 4' x 8' (3' x 5' minimum) placed on top of two saw horses to serve as a cutting table and work station (see picture 1), or you can use (3) 2" x 12" x 84" pieces of wood as you can leave a cutting slot so you are not cutting into the wood (see pictures). Make sure table is secure and flat, that you have access to outlets and know where you will be clamping materials and/or straight edge. Make sure the location of your work station is convenient to the project, but will also accommodate dust and potentially water.



Preparation:

- 1 When preparing the job site it is important to check all the logistics before getting started. Locate a flat spot to set up your work station that is close to a power source for your tooling. Make sure the path from your work station to the installation site is clear of any obstacles and debris. Each SoterraSlate panel comes with a clear plastic sheet that can be used for floor, tub and base protection.



- 2 In the bathroom, make sure you have located the proper area to store the panels and components after you have dry fitted them and applied the adhesives. Do not wait until you are in the middle of the installation to work this out; take the extra 5 minutes to determine the proper logistics.

- 3 To protect the edges of the SoterraSlate panels, do not remove the protective sheet provided until you are ready to begin your project. Once you remove the template strips, make sure you place either the cardboard, protective sheet or shipping blanket between the SoterraSlate panel and floor to eliminate any chance of chipping the panel.

Prior to cutting, lay out all of the panels and mark each one on the backside (top, left, backwall, seam etc.....)



Lesson Continues on the Following Page

! Important Considerations Before You Begin your Soterra Do-It-Yourself Project:

1 When cladding over an existing surface, determine the thickness of existing materials on the walls. Please note that in some cases you will need to remove the outside tile if thicker than inner walls so the Soterra Trim pieces can cover the panel and existing surface. The Soterra Bullnose Trims are 1" thick and 1" wide & the Ogee Trims are 1 1/4" thick and 2" wide,

2 If you are using an existing shower/faucet, you may need a valve extension kit. See valve manufacture specifications for details.

3 Existing soap dishes or towel bars must be removed prior to template and installation of new walls.

4 Are your walls flat? Any bowing will require additional 5570 or 3370 adhesive in the low spots.

5 You must remove existing shower doors when cladding over your existing surfaces.

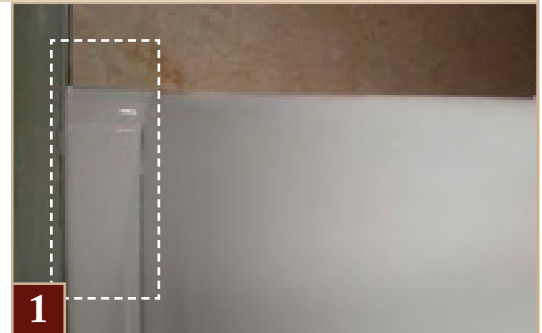
6 When making your project measurements, be aware that most shower walls will not be square.

In some cases, a shower wall from top to bottom may be out up to 1/2". Soterra Slate Panels are square. Template the entire job as recommended in the template section; you must account for the walls/floor/tub not being level or flat. Measuring will also work providing you are pulling your measurements from Plum & Level lines!

If additional waterproofing is desired there are many systems out there that will compliment your new SoterraSlate Shower but this will need to be done prior to starting the Slate Project.

Please see the following page for a measurement chart. Using this chart to track all measurements can help to find any discrepancies prior to beginning your Soterra Do-It-Yourself Project.

Lesson Continues on the Following Page



1 Tile is O.K.

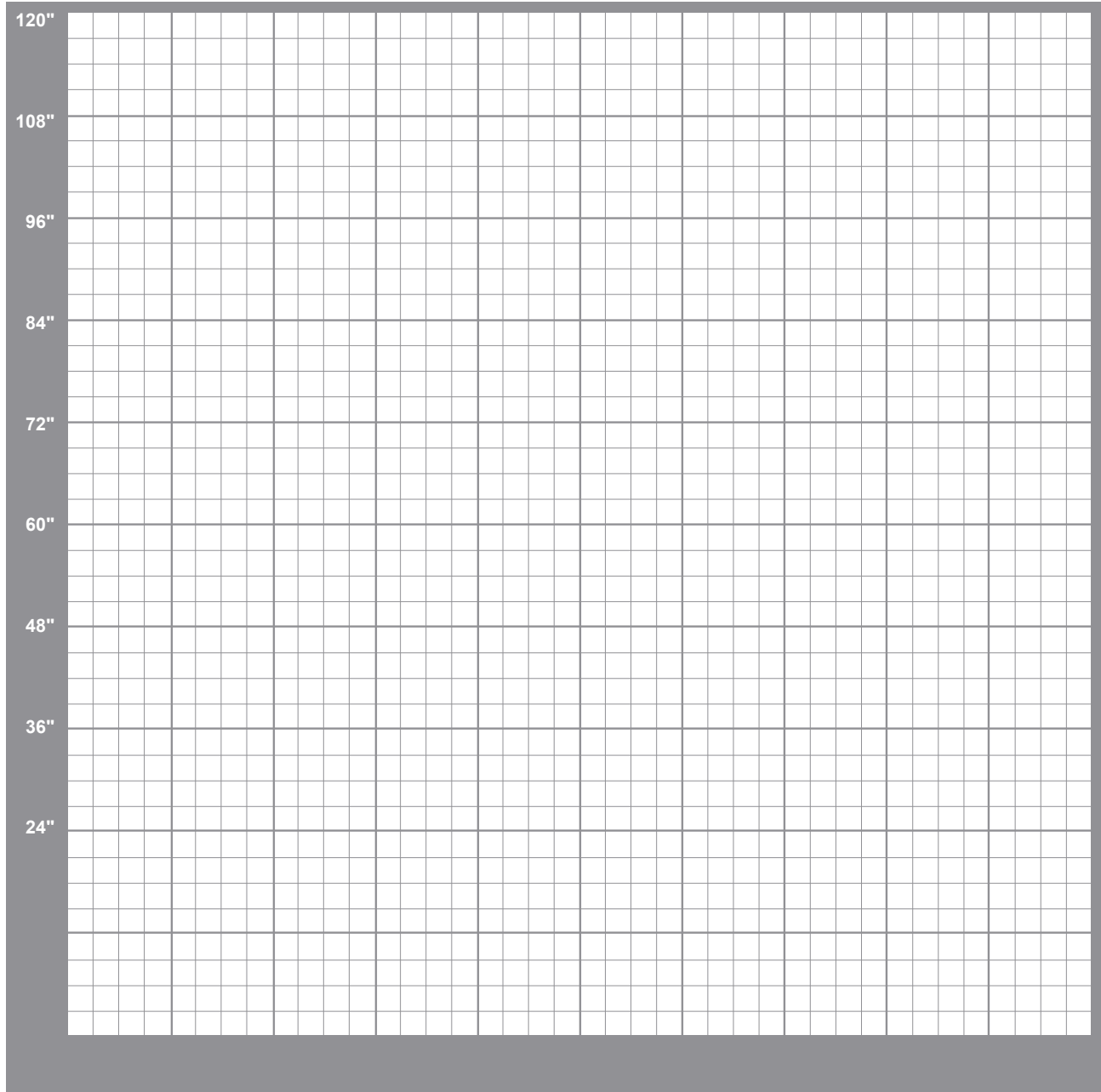


1 Tile might need to be removed.



Please do your measurements on the chart below to alert yourself to any discrepancies:

□ = 3" x 3"  = 12" x 12"



The Soterra Template:

- 1 Each SoterraSlate panel includes template material. This template material is also the edge protectors that surround the panels in your kit/configuration and the strip located in the middle of box (see picture 1). Once you identify the exact dimensions of your new SoterraSlate shower, make your template. Cut the 6" template pieces in half lengthwise so you will create enough 3"x72" or 3"x 60" strips to template all shower walls. You can also use the panel box for additional template material.



- If going over existing tile or installing new cement backer board, make sure your substructure and shower pan/tub is in place, then take a series of measurements to determine if your walls are square. In most cases, they are not. This will let you know where you have to adjust to your templates; this alone will save you from making costly mistakes. If going over existing tile, take the trim piece you plan to use and place it on the outside edge to make sure it covers the existing tile and new SoterraSlate panel. Remember, the Ogee Trim can be use either inward or outward.

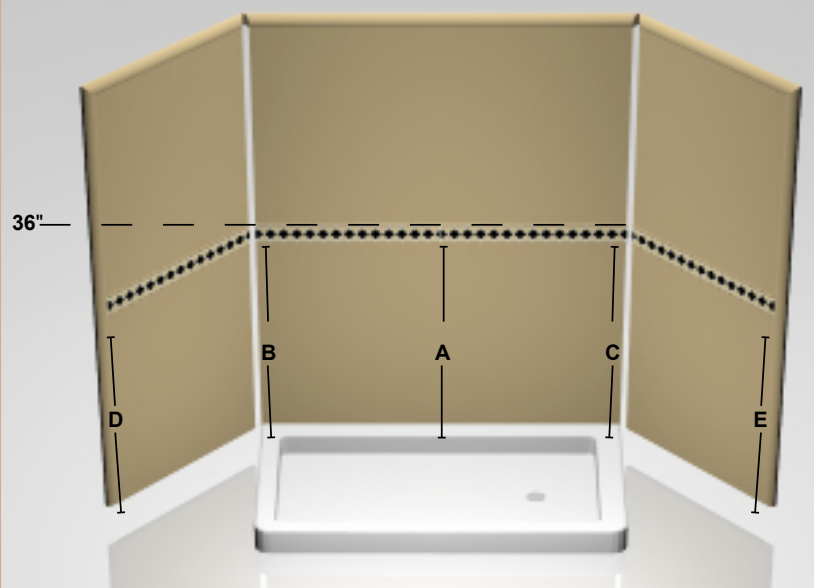
- 2 To create your wall template, use the recommended glue gun & sticks to bond the template strips together (see picture 2) as you create the exact wall template that you will use to cut your new SoterraSlate panel. It's very important to clearly mark each template so you can identify which template is for which wall.



How to Template & Measure:

- 3 If installing wall panels horizontally (diagram 6-A), start by drawing a level line where the bottom panel tops out with a pencil and make several measurements as shown (diagram 6-A). If (C) is higher than (B) from the tub or shower pan, then you will know where to scribe the panel at the bottom. **MAKE SURE** that at no point the measurement exceeds 36". If a measurement is 36 1/2" then your new level line must be 35 1/2".

Diagram 6-A



How to Template & Measure (continued):

- 4** **Example:** Model 3060-76DS (see Diagram 6-B) – the panel removed illustrates the difference in one panel not being square. Please note, use the factory edge as the level line and always cut where the panel aligns with the base or upper trim.

Diagram 6-B

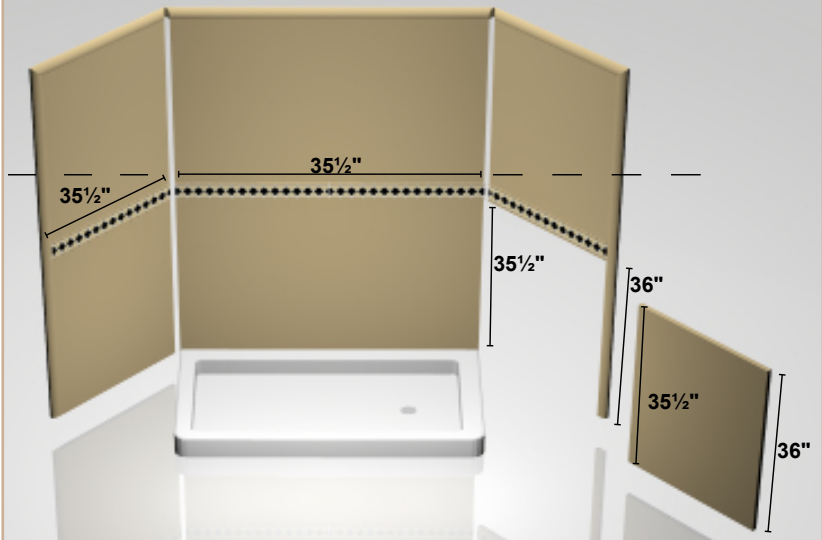
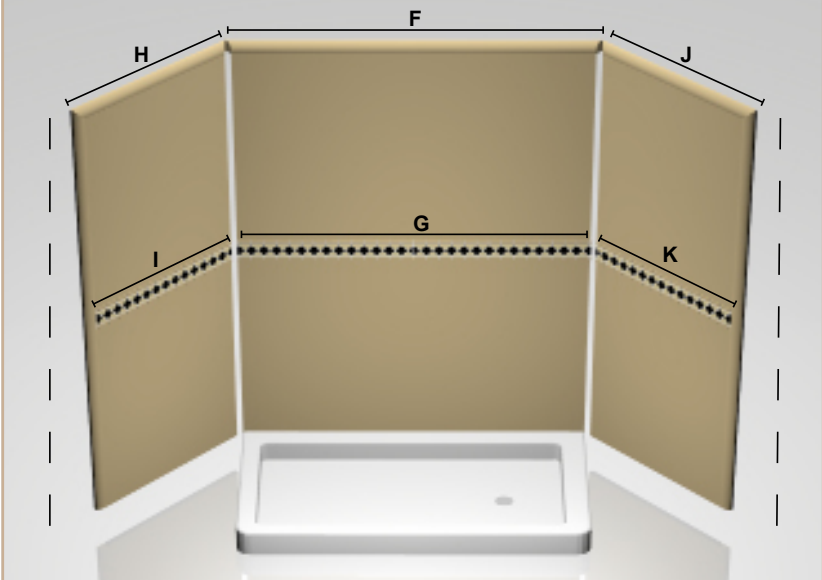


Diagram 6-C



- 5** In Diagram 6-C, the upper panels are similar to Diagram 6-A. If the inside of (H) is higher than outside bottom corner of (I) then your template should reflect this, never assume something is square.

Lesson Continues on the Following Page

How to Template & Measure (continued):

6

Make sure the outside walls are not over 30" in depth when using a 3'x5' panel or 36" in depth when using a 3'x6' panel. In most SoterraSlate shower kits and configurations, the side walls are comprised of one panel cut in half to create a lower and upper wall. That's why the wall depth cannot exceed 30" or 36" depending upon the panel size (see Diagram 6-D). Use the factory edge on the outside edge, if possible. and slate panel from 30" (H) to 29 3/4" (L).

7

It is important to note measurements, arrows and any other important information on the template (cardboard strips) you may need to transfer to the panel prior to cutting. This will include vein direction and matching up material at seams. If possible, use the factory edge on the outside and note this on your template. Use the factory edge at the level line, make a note on the template.

If you decide to measure only (no template), transcribe all the information on the paper/drawing and transfer to the panel. Always draw your level line and thoroughly measure each point as illustrated in 6-A and 6-C to make sure you have exact measurements for each wall panel as illustrated in 6-B and 6-D. Walls are usually not square, so do not assume. In most cases, the lower panels will need a template so the true level line is created. When measuring difficult to reach back wall and ceiling corners, it's helpful to measure 1" from the corner, make a line and then run your tape measure to the line. This will give you an exact measurement without trying to guess the true corner's depth. Be sure to add the 1" to your overall measurement.

Diagram 6-D

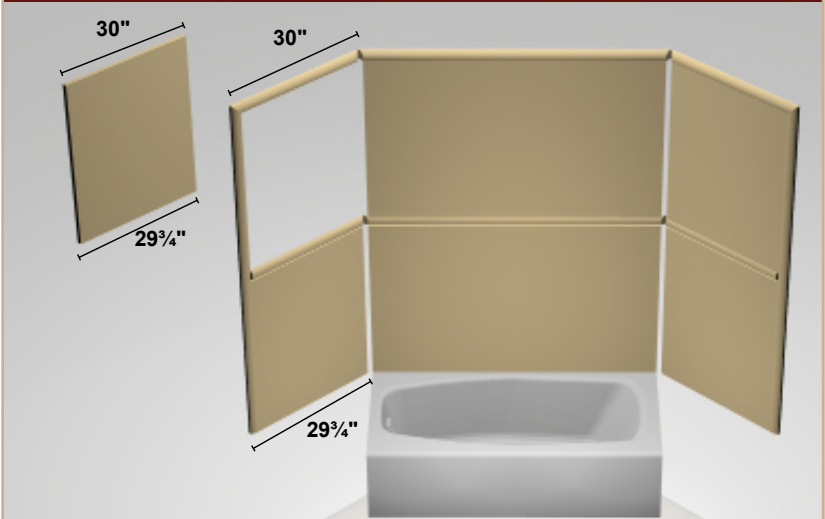
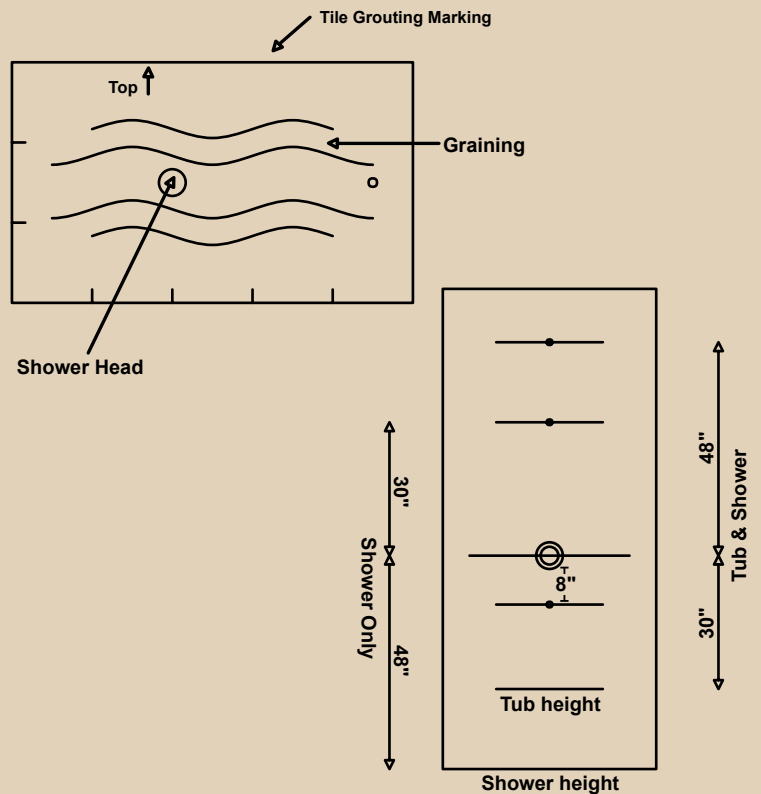


Diagram 6-E



How to Cut Soterra Slate Panels:

- 1** Once you have finalized your template, place the slate side facing up on a flat surface. For best results, use a piece of plywood that is at least 3' x 5' placed between two saw horses to serve as a cutting table or (3) 2" x 12" pieces of wood.

Position the panel so the edge you want to cut is closest to you and mark your measurements from the template; use only a #2 pencil on the slate surface.

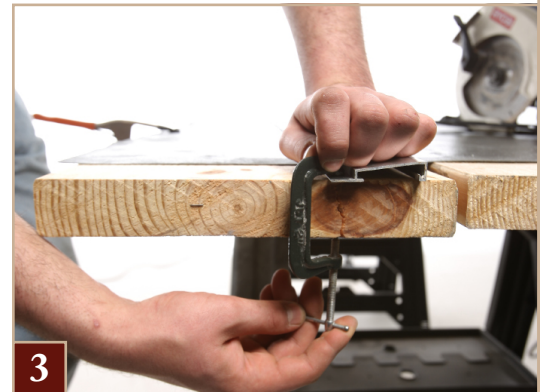


- 2** Before cutting, make sure that there is no debris on the face of the slate panel.

Place the template on the slate and trace the template onto the panel or make (2) marks on the slate to connect the straight edge to. If you make any changes to the marks make sure to ERASE previous marks prior to cutting.....measure twice, cut once!



- 3** Next, position the straight edge as your cutting guide 1 1/2" from the cut line and saw blade. You can either screw it to the work table or use a clamp to hold it down, or both. Make sure you are cutting to the outside of the pencil line and account for blade thickness in the off set of the blade.



- 4** The Soterra Slate panels are only 1mm thick with a reinforced backing so the panels are easy to cut, however it is natural slate, finesse must be used when cutting. When dry cutting there will be dust, so make sure to wear a mask, eye and ear protection!

Please use the recommended blade when cutting panels. Do not cut the material too fast or force the blade through the panel. Always cut with the grain, as this will minimize chipping. Prior to cutting panel, make sure your blade is just barely cutting into the wood when using plywood. If you're using 2" x 12" boards as a table, make sure the blade is aligned in a gap and use your hand to secure the straight edge as demonstrated in picture #4.



How to Cut Soterra Slate Panels:

5

When using the recommended straight edge, fasten the straight edge down to the table with the provided C clamps to secure the slate panel so that it does not shift during your cut. The recommended straight edge can be used as a 49" guide or 98" guide.



6

Please note, the recommended 4" hand held wet saw can be used while cutting the panels (see picture #5), but 4" blade will NOT pass thru the thicker Ogee & Bullnose trims. The tile saw in picture 6 can be used for cutting straight lines on the panels and can also cut the Ogee & Bullnose trim.



How to Make Curved Cuts for Soterra Panels:

- 1** In some cases, rounded or design cuts will be required to complete your project. When a tight curve or other design cuts are necessary, use the Husky scissors or a razor knife. (see picture 1 & 1a)
Some acrylic shower bases and bathtubs will have a rounded edge. If it is too large to fill the radius with silicone you will need to template the profile.

**1**

- 2** Trace the curves to be cut onto the slate and go back to your grade school skills of cutting patterns.

- 3** Use scissors or a razor knife to cut the slate in small areas or trimming a panel to fit. For cutting long straight lines use the handheld saw or table saw mentioned in "How to cut Panels".

**1a**

How to Install Soterra Slate Panels:

1

As previously mentioned, if going over existing tile you may need to remove some tiles due to size constraints. If your shower walls have water damage, the existing surface must be removed and replaced with new cement backer prior to installing SoterraSlate panels.

When going over existing tile, please account for the tile thickness; this will dictate the Trim needed to cover the edges. SoterraSlate Bullnose will cover up to 1" and the Ogee edge will cover up to 1 ¼", which is the maximum gap coverage. Please note that the panel thickness with adhesive is 3/16"; make sure to include this in your calculation when sizing up your project.

Prior to installing SoterraSlate panels, make sure that the walls are clean, dry and structurally strong. When installing over tile, make sure the tiles are clean and free of soap scum, mold/mildew and oils. Since you will be covering the existing surface, you can use abrasive cleaners, razor blade or steel wool and wipe down with denatured alcohol or bleach to make sure surface is clean.



2

When installing over cement backer board, Dura Rock, Hardi Backer or any other waterproof substrate, make sure the surface is dry and free of dust. Once the panels are cut to size and you've dry fitted the panel to ensure proper fit, wipe down the back of the panel with denatured alcohol to create a clean surface.



Lesson Continues on the Following Page

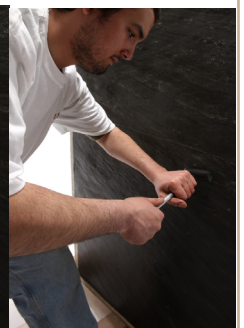
How to Install Soterra Slate Panels *(continued)*:

- 3** Once the panel is clean and cut exactly to your specified dimensions, lay the panel face down on the plastic provided. Run a bead of Loctite 5570 around the outside perimeter of the panel about ½” inside the outside edges (see picture 3). One tube of 5570 will do four panels.

Next take the Loctite 3370 (big tube), cut 2” off the nozzle with a razor knife. Apply the red Snoozle (see picture 3a) prior to inserting the cartridge into the large caulk gun. Start applying the 3370 ½” from the 5570 bead with 1 ½” between each strip (see 3b). **DO NOT FORCE THE 5570 OUT OF THE SNOOZLE.** Use finesse, and allow the polyurethane to flow through the holes. It will take one tube of 5570 per panel to ensure proper bond.



- 4** When applying the panel to the shower wall, make sure the panel is being installed in the proper direction. Start with the bottom edge adjacent to the tub or pan, and press the panel upward making sure the panel is level with the plum line (see picture 4). Prior to tightly securing the panel against the wall, make sure the panel is where you want it. Use the recommended roller(s) to compress the adhesive against the wall (see picture 4a). It's very important that you do this step properly. Do not apply too much pressure, just enough to achieve an even bond and to fill the peaks that may be in your panel.



When using Soterra Brick Patterns:

- 5** The Brick design/pattern is ideal for large showers or when you're creating a staggered look with the SoterraSlate panel. Use the 49”straight 1/8” spacer as your grout line guide. Make sure all grout joints are clean and that no 5570 has dried in the joint. We recommend that someone assist you in holding the panels in place as you set the panels with the spacer bar. The spacer bar can clip onto the panel when making horizontal lines.

Make sure you use CEG Epoxy Grout to fill the joints; see the SoterraSlate color chart to choose the correct CEG color to coordinate with our panels.



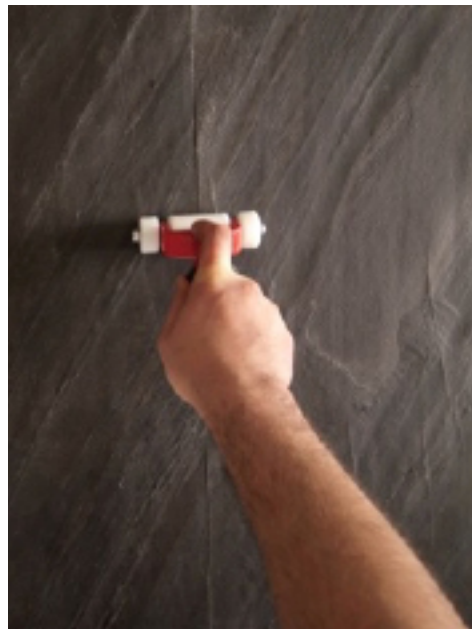
Lesson Continues on the Following Page

How to Install a Seamed Back Wall:

6 When making a vertical seam (see picture 6) make sure to use the factory cut edges; this will create a straight, tight seam. First, identify the center line where the seam will be and draw a line with the straight edge. A standard tub surround back wall usually measures 60", so the center line will be at 30".

When installing panel #1, start at the bottom and place the panel lightly on the wall. Make sure the center line aligns with the panel edge. Place a bead of the specified color coordinating silicone/caulk on the back edge and apply lightly to bond the panel to the wall, do not press panel firmly yet. Repeat the process for panel #2 and make the two panels align tightly. Do not press firmly until seam is set.

After you're satisfied with your seam, use the roller horizontally first (not vertically) to flatten out any gaps. Once the panels are firmly in place, go up and down the seam vertically as seen in (picture 6a). To clean any excess adhesive, spray denatured alcohol on the seam and wipe off any excess.



How to Template & Core Valve/Shower Head Holes:

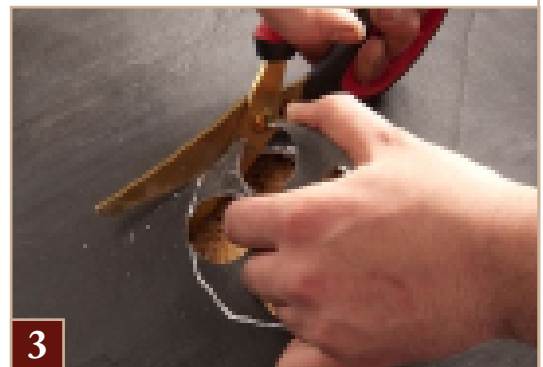
1 After the back wall is installed and you've completed your template for the wall where the shower valve is located, do a series of measurements from the floor and back wall to determine the center line of the shower valve. Identify all the holes that need to be cut in the panel, draw the center line for each hole on the template and transcribe the information onto the back of the panel. If using a template, double check the holes to make sure they align with the valve and/or shower head.



2 Prior to tapping the holes into the panel, make sure the panels have already been cut to size according to the template. Place template on top of the slate panel and trace all information onto the surface with a #2 pencil.



3 If you have not purchased a recessed light bit, use the 1 3/8" tile hole saw to make a series of small holes along the outside edge of the hole as seen in picture 2. Then use the recommended scissors (see picture 3) to complete the cut out.



4 To tap the shower head hole, use the Brutus Tile Hole Saw with guide (see picture 4). The guide will suction to a clean slate surface (denatured alcohol may be needed). Then fill the guide with water. Place the bit in drill, insert bit into cylinder and cut your hole.



How to Cut SoterraSlate Design Strips:

1 Each SoterraSlate Design Strips is 4" H x 18" L, and has a peel & stick strip applied to the back for easy installation (see picture 1).



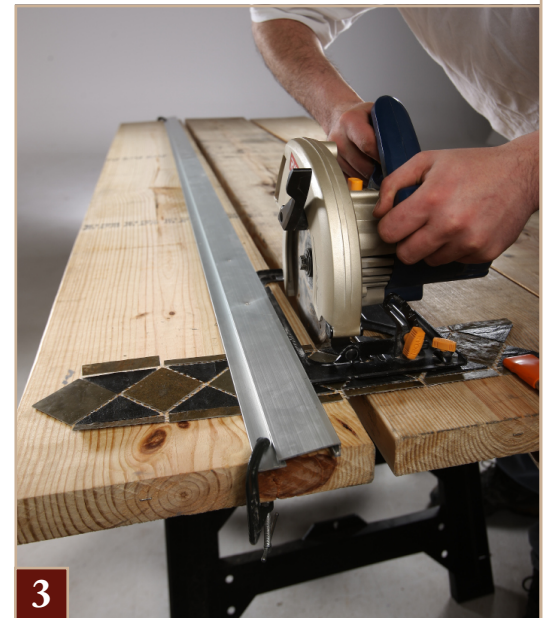
1

2 If desired, you can use template material that is supplied with the SoterraSlate panels. Cut the cardboard to 4" x 18" strips or 4 1/4" x 18" if you opt for a grout joint between the strips and panels (see picture 2). Please note, you can use the Design Strip itself as a template and a cardboard template is not necessary.



2

3 Make sure to firmly secure the strip when cutting (see picture 3). Prior to cutting, make sure all strips are lined up according to a pattern and diamonds are coordinating. If you run into an issue, peel the piece off and replace it with the design that you need.



3

How To Install SoterraSlate Design Strips:

1 Once the Design Strip is cut to size, dry fit the piece to make sure it is the exact size you needed prior to applying to the wall.

2 Once you're satisfied with the length, mark each with a number to identify the order when dry fitting the Design Strips. Make sure all strips match up prior to peeling off backing and applying to wall.



You have the option to either have a 1/8" grout line between the panels and the design strip or just drop the Design Strip directly on to the panel and repeat the same for the top panel(s).

Soterra Design Strips with Grout Lines between panels:

3 If you would like to have a 1/8" grout line between the Design Strips and the wall panel, use the 49" straight edge (spacer bar) to create the line. After installing the lower panels, place the spacer bar adjacent to the panel; make sure the spacer bar is level, then place the Design Strip on top of the spacer bar. Make sure you have the Design Strips in proper order and install your Design Strips accordingly. Once all strips are installed, place the spacer bar on top of the Design Strip and install the upper wall panels.

Soterra Design Strips without Grout Lines:

4 When placing the Design Strip flush with the panels, install the lower panels and place the Design Strip directly on top of the lower panels. Make sure the area is clean and no adhesive has cured that would cause a gap between the panel and Design Strip. Once all strips are installed, install the upper panels directly on top of the Design Strips.

Lesson Continues on the Following Page

How to Install SoterraSlate Design Strips *(continued)*:

5 Dry fit the Design Strip prior to peeling the backing on the adhesive and then align the bottom of the Design Strip to the spacer bar or panel and roll on lightly. Once satisfied with position you can use the roller to secure in place.



6 Be sure that all of the adhesive from panel below is removed prior to installing the Design Strip. Once installed roll the Panels and Design Strips together so that they are flush with each other. Fill the joints with the coordinating color of the **CEG Epoxy Grout:**

- Golden Sand-Sealed & Enhanced=**Earth #105**
- Multi Color-Sealed=**Natural Gray #109/Enhanced= Earth #105**
- Verde River-Sealed=**Natural Gray #109/Enhanced= #105**
- Peacock-Sealed & Enhanced=**Earth #105**
- Rustic-Sealed & Enhanced=**Earth #105**

Follow the mixing directions of the selected Epoxy Grout and apply the mixture into all grout lines using the float (picture 6). After all grout lines are full make sure to have a clean bucket of water and recommended sponge to remove the excess grout. Repeat by cleaning sponge until you have a smooth surface between all lines and the residue is removed from the Design Strip.

* It may be necessary to use denatured alcohol and a clean cloth to remove any residue that may have run onto the lower section panels. This should be done within 30 minutes of finishing grout application.



How to Cut SoterraSlate Bullnose & Ogee Trim:

- 1 The SoterraSlate system offers two trims options, Bullnose (see picture) and Ogee Trim (see picture). Handle the trim with care, they are fragile.

Bullnose Trim is 1" thick x 1" tall x 18" long.

Ogee Trim is 2" thick x 1 1/4" tall x 18" long. The Ogee trim can be installed in two different design options. The flat edge can be installed inward or outward, depending on which angle best fits your wall design.

To identify the amount of trim you'll need for your project, make a drawing and measure the outside dimension. Account for the outside miter corners by adding 2" per corner. Divide the total amount of inches by 18, which will equate to the total number of trims required to cover the perimeter of your shower.



Bullnose Trim



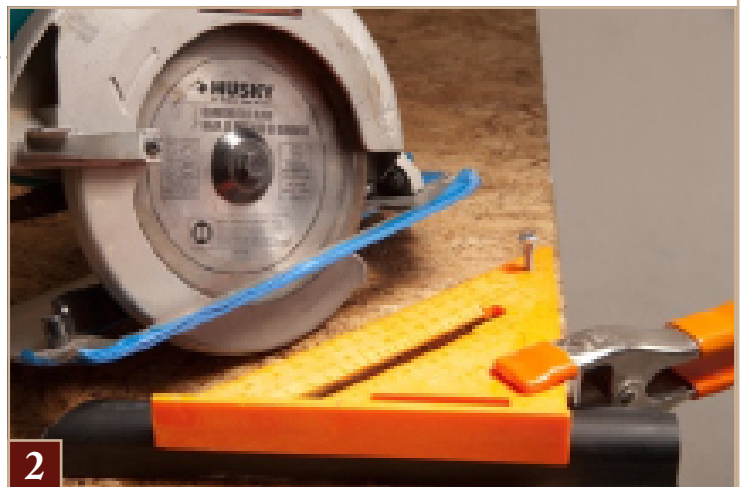
Ogee Trim

- 2 The trims can be cut with a tile saw or a 7" circular hand saw in combination with an angle square. Use a spring clamp to secure the trim and square during your cutting process (see picture 2).

Determine where the trim will be placed around your shower making sure the seams are where you want them. To accommodate for mitered corners, make sure there is at least 2" to 3" to complete the miter.

Once you've finalized your trim placement, mark the trims in the order they will be installed. Apply masking tape to the trim and mark where the cuts or miters will be made.

- 3 Make sure you have maximized the trim to minimize waste. The Shower Kit Configuration comes with one extra trim for safe measure.



2

Lesson Continues on the Following Page

How to Cut Soterra Trim *(continued)*:

4 For cutting straight or angle cuts using a 7" hand saw, place the extra trim in front of the angle square for support. Place the trim piece you plan to cut in the back so the blade will cut completely through the trim. (see picture 3).



5 If using a tile table saw (see picture 4), make sure to add water for a smoother cut. For examples on how to cut, see pictures 4(a) & 4(b).



How to Install SoterraSlate Bullnose & Ogee Trim:

1 Make sure the surface is clean, especially if tile has been removed (see picture 1). If only removing the outer edge of tile, cement backer board may be needed to create a smooth surface for the trim to be adhered to. The Ogee Trim can be used with either the flat edge inward or outward.



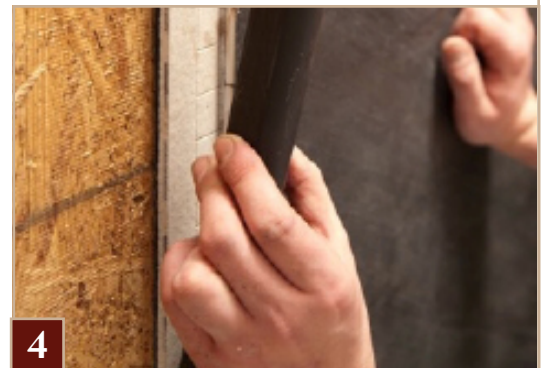
2 Dry fit your trim to make sure each piece is level and the seam is tight with the adjoining trim (picture 2).



3 Place a bead of Loctite 5570 down the middle of the trim (see picture 3). Make sure the 5570 does not ooze out, if the 5570 does ooze out, just wipe the remainder clean with a cloth.



4 Place the trim against the wall. Make sure the trim aligns with the wall panel and press firmly (see picture 4).



Lesson Continues on the Following Page

How to Install SoterraSlate Bullnose & Ogee Trim (continued):

- 5** Where the trim butts together, apply a small amount of color coordinating silicone caulk to help hide the seam. Use just enough to cover the surface and fill the seam (see picture 5).

- 6** Use a strip of masking tape to hold the trim in place as the 5570 cures.

When stacking the trims on top of each other or on top of the panel, the masking tape may not be needed.

- 7** Make sure trims are flush and properly aligned prior to 5570 curing (see picture 6).



How to Cut & Install a Soterra Knee Wall cap:

1 Follow the previous steps with regards to cutting and installing the SoterraSlate panels for the lower inside and outside walls.

2 After installing the side wall, measure the front outside wall and the top to provide the proper measurements for the Soterra 6" x 60" x 1" thick Knee Wall Cap piece(s). (see picture 1)



The Soterra 6" x 60" Knee Wall Cap comes with (3) finished edges and (1) additional 1" x 60" piece. Use the circular saw or tile saw to cut the cap to desired dimensions.

After cutting the Knee Wall Cap to size & the new cut edge needs to be finished. Cut the additional 1" x 60" piece of slate provided to size, and apply the new strip to curb cap with the Locitie 5570.

3 When finalizing the measurements, be sure to account for any overhang. The standard overhang is ½" along all exposed edges. (see picture 2)



How to Install a Soterra Soap Dish:

1 Determine the height of where you want to place the lower SoterraSlate Soap Dish from the floor. Once you have identified where you want the lower dish, mark the bottom line with a pencil.



2 Clean area thoroughly with denatured alcohol where you will place (2) 10" strips of velcro for 10" dish and (2) 6" strips for 6" dish on the wall. Place the top of the triangle supports (included) where the bottom of the soap dish will be placed.

Make sure the Velcro does not go above the support as this would not allow the soap dish to press against the wall. Remove the paper cover from the back of the Velcro and press firmly to the wall.



3 Then place the supports on the top of the velcro strips on the inside corner and outside edge of velcro. The supports must be 5 ½" from the corner of the shower on the 6" soap dish and 9 ½" on the 10" soap dish.

Make sure the outside supports are 1/8" higher than the inside supports so that the water drains off the center/back of the dish.



4 After applying all four soap dish supports, dry fit soap dish to make sure it is level and placed where desired.



Lesson Continues on the Following Page

How to Install a Soterra Soap Dish (continued):

- 5** Mix the adhesive together in the small pod for the 6" dish and the large pod for 10" dish. Place a bead down the middle of each flat unpolished edge.

Using too much glue may cause the excess to run down the wall; do not cover the entire edge.



- 6** Apply Soap Dish to the wall, pressing firmly for 60 to 120 seconds. Make sure supports are holding firmly prior to releasing, then clean excess residue with soft cloth and denatured alcohol.

Wait 1 – 2 hours.

Pull the Velcro and the supports off the wall. Clean excess residue with soft cloth and denatured alcohol.



Repeat steps 1 – 6 for additional soap dishes.

- 7** Apply the color coordinating silicone between the Soap Dish and wall on top and bottom. Clean excess residue with soft cloth and denatured alcohol.



How to Finish Your Soterra Do-It-Yourself Project:

1

Make sure there is plenty of silicone between the wall and panel around the valve and shower head prior to applying the escutcheon plates.

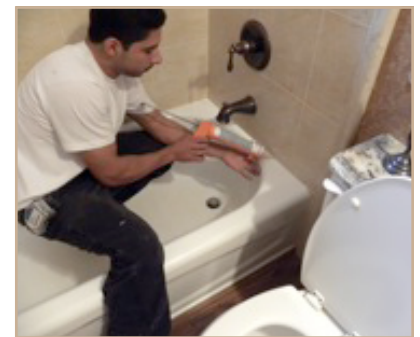
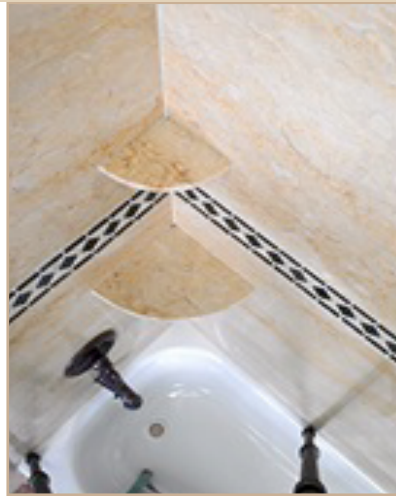
Use the color coordinating silicone caulk to fill all the joints between panels, trim pieces, design strips and soap dishes not only for hiding the seams & joints but for locking out the water as well.

Lightly spray denatured alcohol on top of silicone caulk bead to clean excess as this will eliminate the silicone caulk from sticking to the panels and components.

Maintenance & Care Information:

Your SoterraSlate products have been treated with a high performance Sealer/Enhancer to insure years of protection and satisfaction. To help preserve the life of the Sealer/Enhancer and because the SoterraSlate is a low maintenance product, harsh everyday cleaners and abrasive cleaners are not recommended or necessary for routine maintenance.

For routine cleaning, use the **Aqua Mix “Marble, Travertine, Limestone & Slate Cleaner & Resealer”**. Use of common shower cleaning products, abrasives and spray-on cleaners may damage the Sealer/Enhancer and or the Slate and will void the warranty.



WARRANTY

SoterraSlate products are warranted to be free from defects in materials and workmanship. Any such defects must be reported within fifteen (7) days of date of delivery. During this warranty period we will repair, or at our option, replace free of charge, such merchandise as shall prove to be defective. THIS

WARRANTY DOES NOT APPLY TO DAMAGE RESULTING FROM ACCIDENT, ALTERATION, MISUSE, TAMPERING, NEGLIGENCE, OR ABUSE. INCIDENTAL AND CONSEQUENTIAL DAMAGES ARE SPECIFICALLY DISCLAIMED. ALL OTHER WARRANTIES (INCLUDING ANY WARRANTY OF MERCHANTABILITY OF FITNESS FOR ANY PARTICULAR PURPOSE) ARE HEREBY EXCLUDED. THE FOREGOING SHALL CONSTITUTE THE SOLE REMEDY OF THE CUSTOMER.

NOTICE Before using, user shall determine the suitability of the product for its intended use and user alone assumes all risks and liability whatsoever in connection therewith. ANY CLAIM SHALL BE DEEMED WAIVED UNLESS MADE IN WRITING TO US WITHIN SEVEN (7) DAYS FROM DATE IT WAS, OR REASONABLY SHOULD HAVE BEEN, DISCOVERED



Limited Installation Systems Warranty

5 Year Fully Transferable Residential, Commercial & Industrial Warranty

THIS WARRANTY GIVES YOU SPECIFIC LEGAL RIGHTS – YOU MAY ALSO HAVE OTHER RIGHTS WHICH VARY FROM STATE TO STATE.

Terms and Conditions

Subject to the conditions and limitations stated in this document, Custom Building Products (CBP) and Surfacing Products International (SPI) warrants that the CBP and SOTERRA Natural Stone Products will be free from manufacturing defects and will not break down or deteriorate under normal usage for the life of the installation when installed in accordance with CBP's and SPI's most recently published instructions, specifications and industry standards and guidelines for said installation.

This warranty becomes effective upon validated substantial completion of the project. This warranty is transferable only during the warranty term period.

Exclusive Remedy

In installations correctly utilizing CBP products listed on this document and a SOTERRA Natural Stone Products assembly, CBP and SPI will repair and/or replace, at its discretion, the affected area of the system. Such cost to CBP and SPI shall not exceed the original square foot cost of the installation proven to be defective. CBP and SPI are not responsible for shade or dye lots of the finish materials. Proof of product purchases is required with any claim.

Limitations

CBP and SPI shall not be responsible for structural failure or workmanship that is not in accordance with standard industry practices and procedures and CBP or SPI published instructions. CBP and SPI will not be liable for any loss or damage arising from the SOTERRA assembly, CBP installation system or any CBP product incorporated therein, whether direct, indirect, special, incidental or consequential, regardless of the legal theory asserted, including warranty, contract, negligence or strict product liability. This warranty covers labor – limited to labor to replace stone only, additional plumbing and electrical contractors and backsplash work are not included in the labor allowance. This warranty covers stains made from common food & beverage items. It does not cover change in "gloss" of stone, defects caused by improper fabrication or installation, natural veining and slight color variances that naturally occur, product that have been exposed to acid, products that have been abused or used in an abnormal way, chipping, cracking, mishandling

Some states do not allow the exclusion of consequential damages, so these limitations or exclusions may not apply to you. Cracking due to structural movement beyond the engineered design, excessive deflection or due to other failure of the substrate and damage to structural or subfloor elements from water are also not covered. Acts of God, including but not limited to flooding, hurricane, tornado, earthquake and fire shall not be covered under this warranty. CBP and SPI will not be responsible for system failure resulting from the use of competitive or non-specified products. The potential for efflorescence and shading is inherent in all cementitious products and is not considered a manufacturing

defect. Although CBP or SPI may have suggested the material or developed the material at the request of the owner or applicator, it is the responsibility of the owner to test and determine the suitability of the material for the intended use and purpose, and the owner assumes all risk and liability whatsoever regarding such suitability.

Warranty Requirements

To contact SPI, please call (770) 360-5627 or visit www.soterrastone.com. For CBP Technical Services call 800-272-8786 or visit www.custombuildingproducts.com. A complete CBP system of products must be used including sealers and maintenance products, where applicable in conjunction with the SOTERRA assembly to qualify for this limited warranty. All installations over 5,000 square feet must receive pre-approval by contacting a CBP Architectural Consultant. We offer pre-job inspections, call 800-272-8786 or visit www.custombuildingproducts.com. Multiple residence installations are considered as one installation.

Claims Procedures

If you wish to make a claim under this limited warranty, you must notify SOTERRA info@soterraslate.com and/or CBP immediately in writing at: Custom Building Products, 13001 Seal Beach Blvd. Seal Beach, CA 90740 - Attn. Technical Service Manager. Include any and all information related to an alleged defect of the installation. The claim must be submitted in a timely fashion, and evaluated by CBP before any repair work is done. CBP reserves the right to physically inspect any project with a claim pending prior to determining validity of the claim. Proof of purchase may be required. For any claim that is not valid, CBP will be paid reasonable charges, including travel and labor, associated with investigation of such claim.