

Wallplate Buying Guide



Wallplates provide the finishing touch to switches, outlets and lighting controls. They serve to protect the devices as well as provide a decorative accent which can blend in or contrast with the wall. In some cases wallplates are packaged with the device, but generally they are sold separately.

Wallplates are available in a broad selection of configurations from single to multi-gang, as well as in the form of outdoor weather resistant covers. They are generally constructed of plastic, unbreakable thermoplastic or stainless steel and are typically available in Standard, Midway and Jumbo sizes.

In order to meet the specific customer requirements, wallplates are available in different grades and materials including:

Wallplate Materials



Thermoset (Plastic)

Thermoset wallplates are suitable as a basic replacement for most household applications. They are designed to resist fading, discoloration, grease, oil, organic solvents, moisture and scratches.



Thermoplastic

Thermoplastic wallplates are molded from engineering grade polymers for maximum resistance to impact. Their added durability makes them ideal for high traffic areas such as kitchens, bathrooms, family rooms and children's bedrooms.



Metal

Metal wallplates stand up to heavy use, are easy to clean and their corners have rounded edges to help prevent injury and wall damage. Metal wallplates are available in a wide variety of metals including stainless steel, polished brass, brushed brass, chrome and aluminum.



Antimicrobial Treated Wallplates

To combat the spread of germs, Leviton has developed antimicrobial treated wallplates that work to reduce the growth of bacteria. These wallplates are protected with a polyurethane powder coating that is embedded with a silver ion additive. The powder coating resists development of mold, mildew, fungi and other odor-causing bacteria as well as fingerprints and scuffing. They are ideal for healthcare, childcare, foodservice, hospitality as well as home environments.

Wallplate Sizes

Wallplates are also available in a variety of sizes. The opening for the switch or outlet remains the same, but the surrounding area varies as indicated in the examples below:



Standard – Popular size for general use.



Midway - Slightly larger on all sides to help cover wall imperfections. Often considered “standard” in many parts of the country.



Jumbo - Notably larger on all sides to help cover more significant wall imperfections.

Wallplate Configurations

Wallplates come in a variety of configurations to accommodate practically any need.



Switch
Accommodates a single toggle switch.



Outlet
Accommodates a duplex outlet.

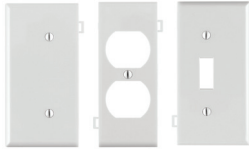


Blank
Covers unused wallboxes. Available in box mount and strap mount configurations.



Combination
Accommodates a variety of switch, outlet and other multiple configurations.

Wallplate Configurations (Continued)



Sectional

Sectional wallplates are for multi-gang installations. Homeowners can build a wallplate to match their configuration. Pieces snap together for a seamless look.



Decora®

Contemporary-styled decorative wallplates designed to be used with Decora devices, lighting controls and GFCIs/AFCIs.



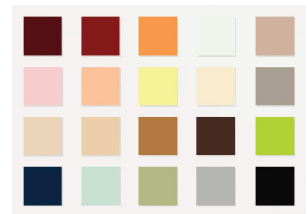
Decora Plus™

Screwless Decora wallplates create a seamless, more elegant appearance.



Renu®

Renu wallplates are part of the Leviton Renu collection of switches, dimmers and outlets and are available in 20 popular colors. With colorful Renu wallplates and devices, homeowners can effortlessly change the face of their devices and wallplates by snapping on/off to accentuate any interior design scheme.



Phone/Cable

Voice/Data/CATV wallplates accommodate standard phone and cable jacks.



Power Outlet

Power Outlet wallplates are used with specialty power outlets such as those for kitchen ranges, washers and dryers, and air conditioners.



Extra Duty While-in-Use Covers

Protect wiring devices and wallplates from inclement elements while providing easy access to outlets. Allows the outlets to remain covered while being used through the built-in circular cord openings.

- Available in both horizontal and vertical configurations
- Guard against moisture, debris and insects
- Use with lawn equipment, pools, hot tubs, holiday and landscape lighting, outdoor entertainment systems and more



Weather-Resistant Outlet Covers

Protect wiring devices and wallplates from inclement elements. Designed to securely close over the outlet and to be lifted up when the outlet is needed for use. They are ideal for use with lawn equipment and outdoor entertainment systems.

FAQs

Q: Why would I need to use a Midway or Jumbo wallplate?

A: The larger size of Midway and Jumbo wallplates helps to hide imperfections that may be on the wall surrounding the outlet. Midway wallplates are often considered “standard” in many parts of the country.

Q: What is the difference between a Decora wallplate and a Regular wallplate?

A: Decora wallplates by design provide a clean, decorative look. They come in a wide selection of colors and finishes, and color matched mounting screws are included.

Q: I have an outlet that I do not use and want to cover it. Is there a cover available?

A: Yes. Blank face wallplates are perfect for this application. However, it is important to note that outlets cannot be simply covered. The outlet needs to be removed and the conductors terminated with wire nuts before a blank face plate can be used as a cover.

Q: Where would I use metal wallplates?

A: Metal wallplates can be used in any room of the home to complement décor. However, they are especially suited for high abuse applications such as basements, garages and utility rooms.

Visit our Website at: www.leviton.com/wallplates

© 2015 Leviton Manufacturing Co., Inc. All rights reserved.
All trademarks are the property of their respective owners.

