

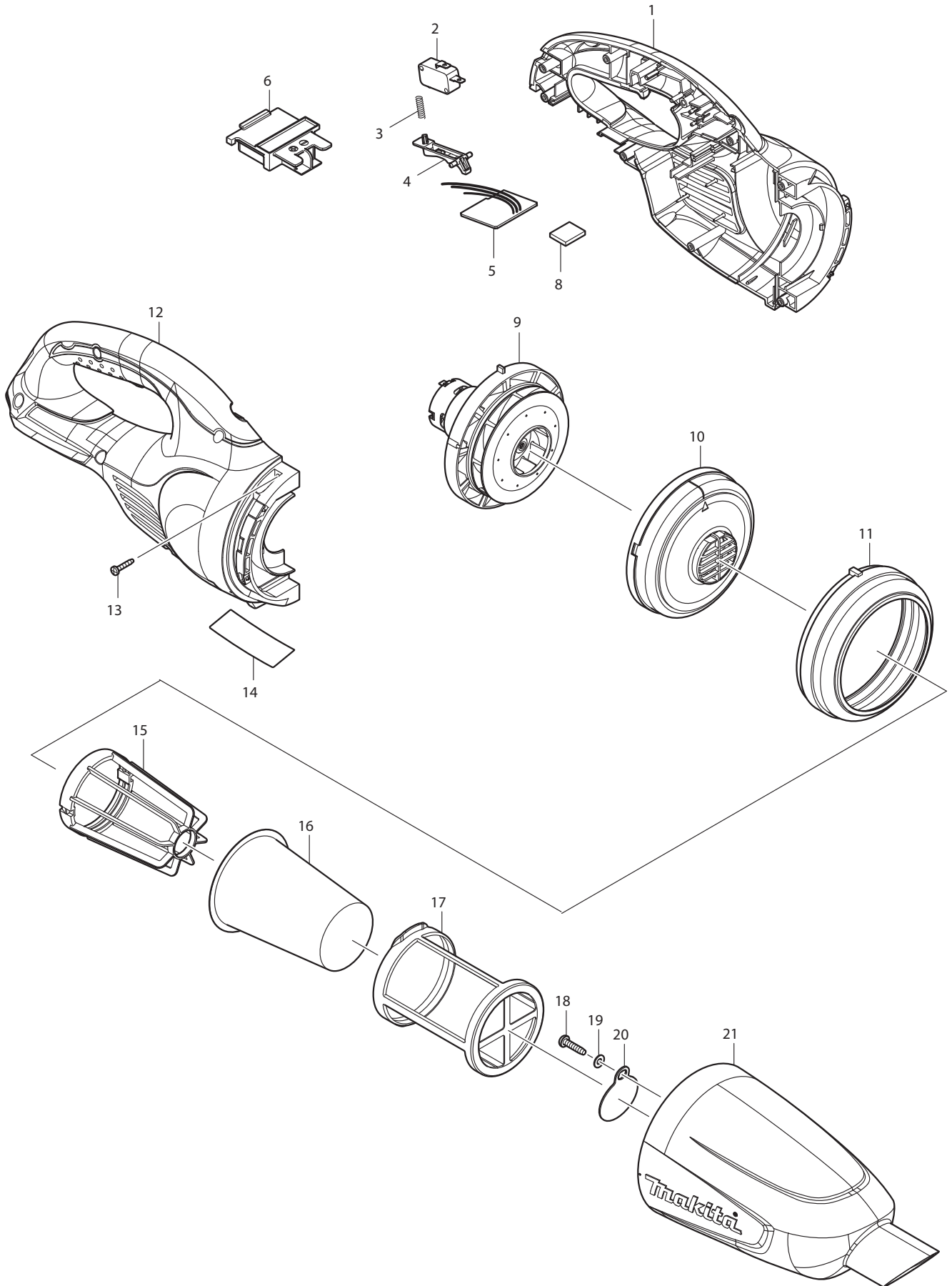
Model XCV05Z Parts List

A = Standard Equipment

O = Circuit Diagram

Item#	Part#	Description	Q'ty Unit
001	143788-0	UPPER HOUSING COMPLETE	1
	C10 263005-3	RUBBER PIN 6	4 PC.
	C20 424834-1	BAND DAMPER A	1
002	123636-9	FILTER ASSEMBLY	1
	C10 153820-2	VALVE COMPLETE	1 PC.
003	135771-1	INLET ASS'Y	1
	D10	INC. 41	
004	852D41-4	XCV05 NAME PLATE	1
005	266326-2	TAPPING SCREW 4X18	8 PC.
006	144025-5	LOWER HOUSING COMPLETE	1
	C10 809T63-1	CAUTION LABEL	1
	C20 424835-9	BAND DAMPER B	1
007	266130-9	TAPPING SCREW BIND PT 3X16	2 PC.
008	183D91-1	SWITCH CASE SET	1
	D10	INC. 10	
009	620525-4	SUB CONTROLLER	1
010	183D91-1	SWITCH CASE SET	1
	D10	INC. 8	
011	266326-2	TAPPING SCREW 4X18	2 PC.
012	687123-7	STRAIN RELIEF	1 PC.
013	699077-6	POWER SUPPLY CORD UNIT	1 PC.
014	421380-5	SUPPORT RING	1 PC.
015	165386-0	FAN COVER	1 PC.
016	931303-0	HEX. NUT M6	1 PC.
017	322407-3	WASHER 6	1 PC.
018	241851-4	FAN 94	1 PC.
019	313062-2	FLANGE	1 PC.
020	266326-2	TAPPING SCREW 4X18	3 PC.
021	456736-3	FAN BASE	1
022	619395-6	ROTOR	1
023	629189-1	STATOR	1
024	687464-1	SUPPORT	1 PC.
025	620526-2	CONTROLLER B	1
026	266786-8	+ PAN HEAD TAPPING SCREW 2X10	4 PC.
027	183D13-1	MOTOR HOUSING SET	1
	D10	INC. 28	
028	183D13-1	MOTOR HOUSING SET	1
	D10	INC. 27	
029	266326-2	TAPPING SCREW 4X18	4 PC.
030	424837-5	SUPPORT A	1
031	424838-3	REAR BLOCK FILTER	2
032	620524-6	CONTROLLER A	1
	D10	INC. 33	
033	644808-8	TERMINAL	2 PC.
034	266326-2	TAPPING SCREW 4X18	2 PC.
035	687123-7	STRAIN RELIEF	1 PC.
036	123586-8	LATCH ASSEMBLY	1
037	424836-7	SEAL	1
038	456739-7	DUST BOX COVER	1

039	265008-3	+ FLAT HEAD SCREW M5	6 PC.
040	161479-1	HARNESS	1
041	213655-4	O RING 56	1 PC.
A01	143787-2	HOSE COMPLETE 28-1.0	1
A02	166116-2	HOSE BAND	1 PC.
A03	161471-7	FILTER BAG	1
A04	197900-4	NOZZLE SET	1
A05	123486-2	NOZZLE ASSEMBLY	1
A06	123584-2	TELESCOPIC PIPE ASSEMBLY	1
A07	123677-5	BENT PIPE ASSEMBLY	1



Model XLC02ZB Parts List

A = Standard Equipment

O = Circuit Diagram

Item#	Part#	Description	Q'ty Unit
001	183G95-1	HOUSING SET	1
	C10 424209-4	SPONGE SHEET 50-50	2 PC.
	C20 802X57-9	CAUTION LABEL	1 PC.
	D10	INC. 12	
002	651891-8	SWITCH V-15-3A6	1 PC.
003	231473-8	COMPRESSION SPRING 4	1 PC.
004	451227-9	SWITCH LEVER	1 PC.
005	638936-9	CONTROLLER UNIT	1 PC.
006	643860-3	TERMINAL	1 PC.
008	424248-4	SPONGE SHEET 15-25	1 PC.
009	125867-6	MOTOR ASS'Y	1 PC.
	C10 452455-9	BASE	1 PC.
	C20 265199-0	+ PAN HEAD SCREW M3X8	2 PC.
	C30 240102-2	FAN 82	1 PC.
010	416030-5	FAN COVER	1 PC.
011	424320-2	RUBBER RING	1 PC.
012	183G95-1	HOUSING SET	1
	C10 424209-4	SPONGE SHEET 50-50	2 PC.
	C20 802X57-9	CAUTION LABEL	1 PC.
	D10	INC. 1	
013	266429-2	TAPPING SCREW 3X16	7 PC.
014	815F74-2	XLC02 NAME PLATE	1
015	410237-5	STAY	1 PC.
016	443060-3	FILTER	1 PC.
017	451208-3	PRE-FILTER	1 PC.
018	265995-6	TAPPING SCREW 4X18	1 PC.
019	941051-3	FLAT WASHER 4	1 PC.
020	424208-6	VALVE	1 PC.
021	456196-9	CAPSULE	1
022	424308-2	SPONGE SHEET 50-36	1 PC.
023	632H18-7	FUSE UNIT	1
A01-1	123539-7	NOZZLE ASSEMBLY	1
	C10 451410-8	ROLLER	4 PC.
	C20 268208-4	PIN 3	4 PC.
	C30 424096-1	WIPER	1 PC.
A02	456586-6	SASH NOZZLE	1
A03	456587-4	PIPE	1
A04	456585-8	SASH NOZZLE HOLDER	1