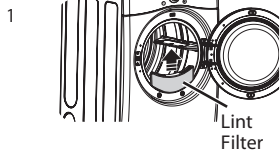


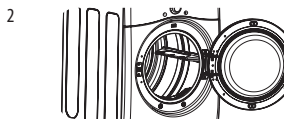
# HOW TO USE

## Operating the Dryer



### CLEAN THE LINT FILTER

If the lint filter has not already been cleaned, lift out the filter and remove the lint from the last load. This will help ensure the fastest and most efficient drying performance.



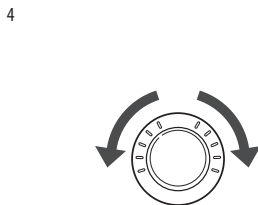
### LOAD THE DRYER

Load the dryer with the wet laundry from the washer. If the load is extra large, you may need to divide it into smaller loads for proper performance and fabric care.



### TURN ON THE DRYER

Press the POWER button to turn on the dryer. The cycle LEDs will illuminate and a signal will sound, if turned on. Refer to page 10.



### SELECT A CYCLE

Turn the cycle selector knob either direction until the LED for the desired cycle is on. The preset temperature, dry level, and option settings for that cycle will be shown. Refer to page 28. Default settings for the selected cycle can now be changed if desired. This can be done using the cycle modifier buttons as shown on page 30. Cycle options can be added using the option buttons as shown on page 30-32.

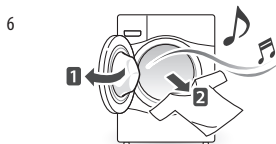
### NOTE

Not all options or modifiers are available on all cycles. A different chime will sound and the LED will not come on if the selection is not allowed.



### BEGIN CYCLE

Press the START/PAUSE button to begin the cycle. The cycle can be paused at any time either by opening the door or by pressing the START/PAUSE button. If the cycle is not restarted within 4 minutes, the dryer will shut off and the cycle settings will be lost.



### END OF CYCLE

When the cycle is finished, the chime will sound if it is set. Remove your clothing from the dryer immediately to reduce wrinkling. If WRINKLE CARE is selected, the dryer will tumble briefly every few minutes to help prevent wrinkles from setting in the clothes.

## Cycle Guide

Cycle	Fabric Type	Dry Level	Temperature	Time in Min.	More Time/ Less Time	Wrinkle Care	Damp Dry Signal	Reduce Static	Easy Iron	Energy Saver
Steam Fresh™	Comforter, shirts, trouser (except especially delicate fabrics)	OFF	MID HIGH	20	○	○		○	○	
			ADJUSTABLE	ADJUSTABLE						
Steam Sanitary™	Comforter, bedding, children' clothing	OFF	HIGH	39		○				
Anti Bacterial	Do not use this cycle with delicate fabrics.	VERY	HIGH	70		○				
Bulky/ Large	Comforters, pillows, shirt	NORMAL	MEDIUM	55				○		
		ADJUSTABLE								
Perm. Press	Permanent press, synthetic items	NORMAL	LOW	32		○	○	○	○	
		ADJUSTABLE								
Cotton/ Normal	Work clothes, corduroys, etc.	NORMAL	MEDIUM	Elec. : 67 Gas : 76		○	○	○	○	○
		ADJUSTABLE								
Delicates	Lingerie, sheets, blouses	NORMAL	LOW	28		○	○	○	○	
		ADJUSTABLE								
Speed Dry	For small loads with short drying times	OFF	HIGH	25	○	○		○	○	
			ADJUSTABLE	ADJUSTABLE						
Air Dry	For items that require heat-free drying such as plastics or foam filled items	OFF	NO HEAT	30	○	○				
				ADJUSTABLE						

### Sensor dry cycles

Sensor dry cycles utilize LG's unique dual sensor system to detect and compare the moisture level in clothes and in the air and adjust the drying time as needed to ensure superior results. The dryer automatically sets the dryness level and temperature at the recommended setting for each cycle. The estimated time remaining will be shown in the display.

#### ! NOTE

To protect your garments not every dryness level, temperature, or option is available with every cycle. See the **Cycle Guide** for details.

### Manual dry cycles

Use manual dry cycles to select a specific amount of drying time and a drying temperature. When a manual dry cycle is selected, the Estimated Time Remaining display shows the actual time remaining in your cycle. You can change the actual time in the cycle by pressing More Time or Less Time.

#### ! NOTE

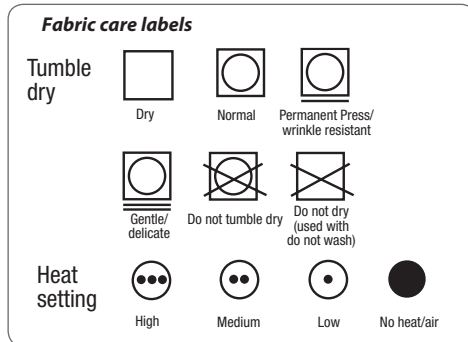
The Energy Saver is default option in the Cotton/Normal Cycle. If you want faster drying than Cotton/Normal default setting, you can turn off the Energy Saver option.

Following are instructions for starting and using your new dryer. Please refer to specific sections of this manual for more detailed information.

## Sorting Load

### Fabric care labels

Most articles of clothing feature fabric care labels that include instructions for proper care.



### Grouping Similar Items

For best results, sort clothes into loads that can be dried with the same drying cycle. Different fabrics have different care requirements, and some fabrics will dry more quickly than others.

## Loading the Dryer

### ⚠ WARNING

To reduce the risk of fire, electric shock, or injury to persons when using this appliance, follow basic precautions, including the following:

- **Check all pockets to make sure that they are empty. Items such as clips, pens, coins, and keys can damage both your dryer and your clothes. Flammable objects such as lighters or matches could ignite, causing a fire.** Failure to do so can result in fire, explosion, or death.
- **Never dry clothes that have been exposed to oil, gasoline, or other flammable substances. Washing clothes will not completely remove oil residues.** Failure to obey this warning can result in fire, explosion, or death.

### ! NOTE

#### Loading tips

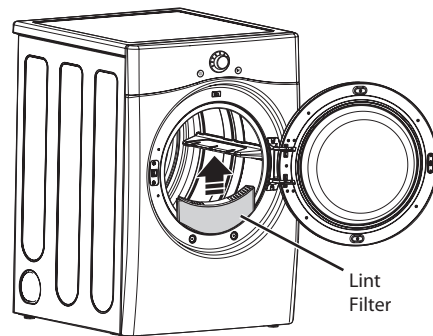
- Combine large and small items in a load.
- Damp clothes will expand as they dry. Do not overload the dryer; clothes require room to tumble dry properly.
- Close zippers, hooks, and drawstrings to prevent these items from snagging or tangling on other clothes.

## Check the lint filter before every load

Always make sure the lint filter is clean before starting a new load; a clogged lint filter will increase drying times.

To clean, pull the lint filter straight up and roll any lint off the filter with your fingers. Do not rinse or wash the filter to remove lint. Push the lint filter firmly back into place. See **Regular Cleaning** for more information.

Always ensure the lint filter is properly installed before running the dryer. Running the dryer with a loose or missing lint filter will damage the dryer and articles in the dryer.



## Cycle modifier buttons

SENSOR DRY cycles have preset settings that are selected automatically. MANUAL DRY cycles have default settings, but you may also customize the settings using the cycle modifier buttons. Press the button for that option to view and select other settings.

### ! NOTE

To protect your garments, not every dryness level, temperature, or option is available with every cycle. See the Cycle Guide for details.

#### **Dry Level**

Selects the level of dryness for the cycle. Press the Dry Level button repeatedly to scroll through available settings.

- This option is only available with SENSOR DRY cycles.
- The dryer will automatically adjust the cycle time. Selecting More Dry or Very Dry will increase the cycle time, while Less Dry or Damp Dry will decrease the cycle time.
- Use a Less Dry or Damp Dry setting for items that you wish to iron.

#### **Temp. Control**

Adjusts the temperature setting from Ultra Low to High. This allows precise care of your fabrics and garments. Press the Temp. Control button repeatedly to scroll through available settings.

#### **Time Dry**

Allows you to manually select the drying time, from 20 to 60 minutes, in 10-minute increments. Use this for small loads or to remove wrinkles. Use the More Time/Less Time buttons to add or reduce the drying time in 1-minute increments.

Your dryer features several additional cycle options to customize cycles to meet your individual needs. Certain option buttons also feature a special function (see the following page for details) that can be activated by pressing and holding that option button for 3 seconds.

#### **To Add Cycle Options to a Cycle:**

1. Turn on the dryer and turn the cycle selector knob to select the desired cycle.
2. Use the cycle settings buttons to adjust the settings for that cycle.
3. Press the cycle option button(s) for the option you would like to add. A confirmation message will be shown in the display.
4. Press the START/PAUSE button to start the cycle. The dryer will start automatically.

#### **Signal**

Adjusts the volume of the Signal or turns off the Signal. Press the button repeatedly until the desired volume setting is illuminated.

## Special functions

The option buttons also activate special functions, including Child Lock. Select the option by pressing the option button. Press and hold the option button for special features marked with the asterisk (\*), such as Child Lock.

### \* **Child Lock**

Use this option to prevent unwanted use of the dryer or to keep cycle settings from being changed while the dryer is operating. Press and hold the button for 3 seconds to activate or deactivate the Child Lock function.

The Child Lock icon will be shown in the display, and all controls are disabled except the POWER button.

#### ! NOTE

Once set, Child Lock remains active until it is manually deactivated. Child Lock must be turned off to run another cycle. To deactivate Child Lock, press and hold the button for three seconds.

### **Damp Dry Signal**

With this option, the dryer will signal when the load is approximately 80% dry. This allows you to remove faster-drying lightweight items or items that you would like to iron or hang while still slightly damp. Press the Damp Dry Signal button.

### **Wrinkle Care**

Selecting this option will tumble the load periodically for up to 3 hours after the selected cycle, or until the door is opened. This is helpful in preventing wrinkles when you are unable to remove items from the dryer immediately.

### **Energy Saver**

This option helps to reduce the energy consumption in Cotton/Normal Cycle, depending on the load size. Drying time will be changed when the Energy Saver is selected.

#### ! NOTE

The Energy Saver is default option in the Cotton/Normal Cycle. If you want faster drying than Cotton/Normal default setting, you can turn off the Energy Saver option.

## Custom program

If you have a special combination of settings that you use frequently, you can save these settings as a CUSTOM PROGRAM.

### To Save a Custom Program:

1. Turn on the dryer and turn the cycle selector knob to select the desired cycle.
2. Use the cycle setting buttons to adjust the settings for that cycle.
3. Press the cycle option button(s) for the option you would like to add. A confirmation message will be shown in the display.
4. Press and hold the CUSTOM PROGRAM button for 3 seconds.

### NOTE

You may save only one custom program at a time. Pressing and holding the CUSTOM PROGRAM button will overwrite any previously saved custom program.

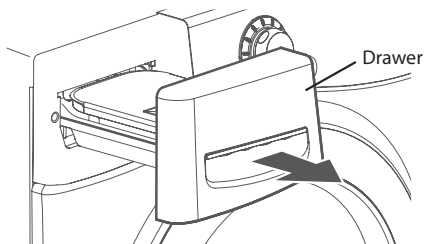
### To Recall a Custom Program:

1. Turn on the dryer.
2. Press the CUSTOM PROGRAM button.
3. Press the START/PAUSE button to start the cycle.

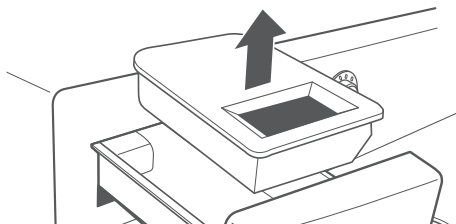
## Steam functions

### To Fill the Steam Feeder

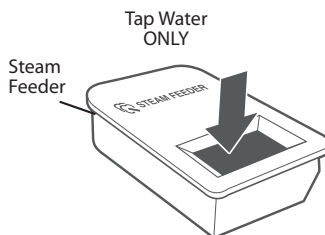
1. Pull out the drawer.



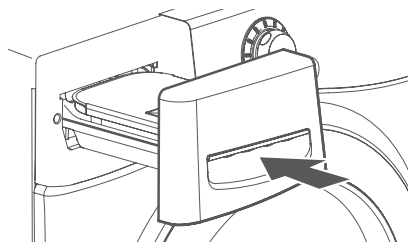
2. Lift out the steam feeder.



3. Fill the steam feeder just to the filter screen.



4. Place the steam feeder in the drawer; then push in the drawer until it clicks into place.



### NOTE

Before using a Steam Cycle, the steam feeder must be filled with water up to the MAX line. If not, the will be displayed. Make sure that the steam feeder is filled with water or the drawer is fully closed. Turn the dryer off then restart the Steam Cycle.

- Only use Tap Water. Do not fill the steam feeder with foreign substances, rinse agents, or detergents.
- Before moving the dryer, make sure the steam feeder is empty.
- Do not use distilled water; the water level sensor in the steam generator will not work.
- Be careful to put the Steam Feeder otherwise water will be overflow.
- Wipe up any spilled water around the Steam Feeder and the drawer before starting the dryer.
- Do not fill the steam feeder with hot water (over 86°F/30°C).

### WARNING

- **Do not fill the steam feeder with liquids such as gasoline, dry-cleaning solvents, or other flammable or explosive substances.** Failure to follow this warning can cause serious injury or death.
- **Do not drink water from the steam feeder.** Failure to follow this warning can cause serious injury or death.

## Steam functions (cont.)

LG's new steam technology allows you to inject fabrics with a swirling jet of hot steam to refresh clothes, reduce static, and make ironing easier.

Simply select the STEAM FRESH™ cycle, or you can add a Steam option to selected cycles.

### Using the STEAM FRESH™ Cycle

STEAM FRESH™ uses the power of steam alone to quickly reduce wrinkles and odor in fabrics. It brings new life to wrinkled clothes that have been stored for an extended time and makes heavily wrinkled clothes easier to iron. STEAM FRESH™ can also be used to help reduce odors in fabrics.

#### NOTE

- REDUCE STATIC or EASY IRON options can also be used during the STEAM FRESH™ cycle.
- Depending on the load (quantity of items), you may change the amount of time for the cycle by pressing the MORE TIME or LESS TIME button. The display will show 3, 5, or  $\frac{b}{g}$ . 3 means 3 or fewer items, 5 is for 4 or 5 items, and  $\frac{b}{g}$  indicates a large load such as a comforter.

### To Use the STEAM FRESH™ Cycle:

1. Turn on the dryer and turn the cycle selector knob to select the STEAM FRESH™ cycle.
2. To add an option function, select REDUCE STATIC, EASY IRON, or WRINKLE CARE.
3. Depending on the load (quantity of items), steam time can be changed by pressing the MORE TIME or LESS TIME buttons.
4. Press START/PAUSE button to start the cycle.

### To Add STEAM to a Standard Cycle:

1. Turn on the dryer and turn the cycle selector knob to select the desired cycle.
2. Use the cycle setting buttons to adjust the settings for that cycle.
3. Press the Steam option button for the Steam option you would like to add. Then adjust for the load size using the MORE TIME or LESS TIME buttons.
4. Press START/PAUSE button to start the cycle.

### Using the Steam Options:

The REDUCE STATIC option injects steam late in the drying cycle to reduce the static electricity caused by dry fabrics rubbing together. Change the amount of time for the cycle by pressing the MORE TIME or LESS TIME button, depending on the load (quantity of items). The display will show the recommended number of items, such as 7, 9, 11, 14, 16, or 18.

The EASY IRON option provides uniform, properly dampened fabrics for ironing, which can save time and make ironing easier. Change the amount of time for the cycle by pressing the MORE TIME or LESS TIME button, depending on the load (quantity of items). The display will show the recommended number of items, such as 1, 2, 3, 4, or 5.

#### NOTE

- When Sensor Dry is selected with the REDUCE STATIC option, a Dry level of Less or DAMP cannot be selected.
- The REDUCE STATIC or EASY IRON option may also be selected during TIME DRY cycles.
- After the Steam option is selected in TIME DRY, the MORE TIME or LESS TIME buttons will change the steam time ONLY.
- After pressing START/PAUSE, the MORE TIME or LESS TIME buttons will be disabled.

### Using the STEAM SANITARY™ cycle

New STEAM SANITARY™ cycle is ideal for sanitizing non washable items quickly and easily using the power of steam alone.

Recommend to use this cycle for cotton and polyester material. (Do NOT use for urethane foam, down feathers or delicates items)

## Steam functions (cont.)

### ⚠ WARNING

- **Do not open the dryer door during steam cycles.** Failure to follow this warning can cause serious injury or death.
- **Do not fill the steam feeder with gasoline, dry-cleaning solvents, or other flammable or explosive substances.** Failure to do so can result in death, explosion, fire, or burns.
- **Do not touch the steam nozzle in the drum during or after the steam cycle.** Failure to follow this warning can cause serious injury or death.

### ! NOTE

- Steam may not be clearly visible during the steam cycles. This is normal.
- Do not use Steam Fresh™ with items such as wool, wool blanket, leather jackets, silk, wet clothes, lingerie, foam products, or electric blankets.
- For best results, load articles of similar size and fabric type. Do not overload.
- When the filter/duct is clogged, the steam option may not have optimal results.
- When the steam function is operating, the drum will stop to allow steam to stay in the drum.
- The steam feeder must be filled with water up to the MAX line. Otherwise, an error message will be displayed.

## Steam cycle guide

	STEAM	DEFAULT TIME	TEMP. CONTROL	DRY LEVEL	FABRIC STATE	FABRIC TYPE	MAXIMUM AMOUNT
STEAM SANITARY™		39 minutes			Dry	Comforter Bedding	Single (1 each)
						Children's clothing	3 lbs.
STEAM FRESH™		20 minutes	○		Dry	Comforter	Single (1 each)
	+ REDUCE STATIC	10 minutes			Dry	Shirts*	5 each
	+ EASY IRON	12 minutes			Dry	Shirts*	8 lbs. (18 Items.)
STEAM OPTION	+ REDUCE STATIC	FOLLOWS SELECTED CYCLE		○	Wet	Varies by selected cycle	8 lbs. (18 Items.)
	+ EASY IRON			○	Wet	Varies by selected cycle	Shirts* (5 each)
TIME DRY	+ REDUCE STATIC	45 minutes	○		Wet	Varies by selected cycle	8 lbs. (18 Items.)
	+ EASY IRON	47 minutes	○		Wet	Varies by selected cycle	Shirts* (5 each)

\*Shirt: 70% cotton:30% poly blend. Except especially delicate fabrics.

- When the lint filter or exhaust duct is clogged, steam options will not give proper results.
- For best results, load articles of similar size and fabric type. Do not overload.



## Before using the Tag On function

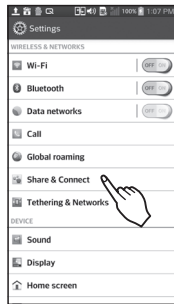
- The Tag On function allows you to conveniently use the LG Smart Diagnosis™ and Cycle Download features to communicate with your appliance right from your own smart phone. To use the Tag On function:
1. Download the LG Smart Laundry&DW App to your smart phone.
  2. Turn on the NFC (Near Field Communication) function in your smart phone.
- The Tag On function can only be used with smart phones equipped with the NFC function and based on the Android operating system (OS).

### NOTE

Depending on the smart phone manufacturer and Android OS version, the NFC activation process may differ. Refer to the manual of your smart phone for details.

### Turning on the NFC function of the smart phone

1. Enter the "Settings" menu of the smart phone and select "Share & Connect" under "WIRELESS & NETWORKS."



2. Set "NFC" and "Direct/Android Beam" to ON, and select "NFC".

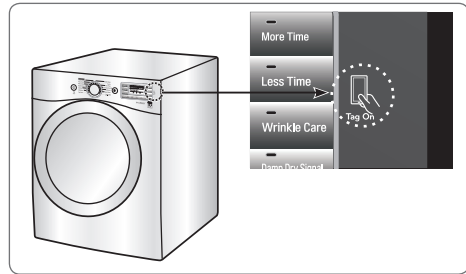


3. Check "Use Read and Write/P2P receive".



### The Tag On guide

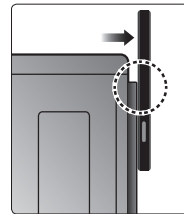
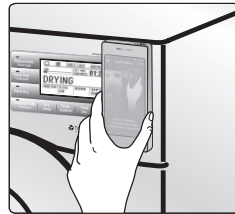
#### The Tag On icon



#### Tag On position



Look for the Tag On icon next to the LED screen on the control panel. This is where you position your smart phone when using the Tag On function with the LG Smart Diagnosis™, Cycle Download, and Laundry Stats features of the LG Smart Laundry&DW application.



When you use the Tag On function, position your smart phone so that the NFC antenna on the back of your smart phone matches the position of the Tag On icon on the appliance. If you do not know the position of your NFC antenna, move your smart phone very slightly in a circular motion until the application verifies the connection.

Because of the characteristics of NFC, if the transmission distance is too far, or if there is a metal sticker or a thick case on the phone, transmission will not be good.

Press [ ? ] in the LG Smart Laundry&DW app for a more detailed guide on how to use the Tag On function.

## Tag On

This feature uses LG Smart Diagnosis™, Cycle Download, and Laundry Stats when you touch the LG appliance's Tag On logo with your NFC equipped smartphone.

Tag On self-diagnosis using LG Smart Laundry&DW application

### 1. Install 'LG Smart Laundry&DW' application on a NFC-equipped smartphone.

- Install the application from the Play store and run it.

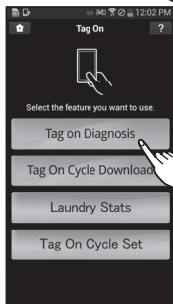


### 2. Select 'Tag On'.

- Home card and icons at the bottom of the screen are all available to use.

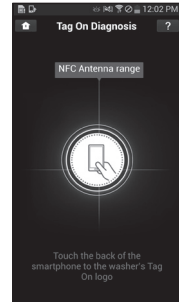


### 3. Select 'Tag On Diagnosis'.



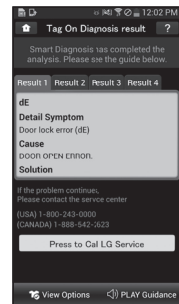
### 4. Touch the Tag On logo.


- When a Tag On screen appears (see at right), tap your smart phone on the Tag On icon on the right side of the washer's control panel.
- If it isn't recognized, touch [ ? ] on the upper right of the Tag On screen on your 'LG Smart Laundry&DW' application to see the detailed guide. (This might happen due to the different NFC antenna positions for each phone.)



### 5. Check the diagnosis results and solutions.

- It shows the diagnosis results on the cycles recently used.



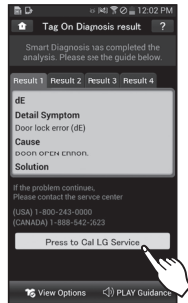


**Scan this QR code with your smart phone to quickly access the LG Smart Laundry&DW App for download**

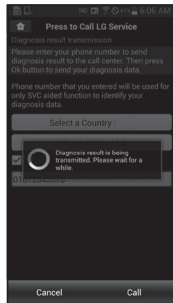
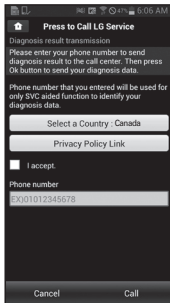
※ Images are for reference only. The actual LG Smart Laundry&DW application may be different.

Tag On Smart Diagnosis

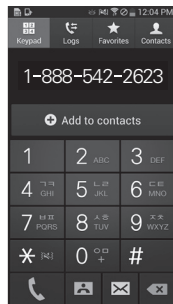
1. Select 'Press to Call LG Service' on the Smart Diagnosis Result screen.



2. Select a your Country
3. Agree to Terms and Conditions of the Use and Privacy Policy by pressing "I accept."
4. Enter your phone number in the field. Use this phone number when talking to the LG customer service representative for them to find your Smart Diagnosis data.



5. Press the Call button to initiate the call to LG's Support Center.

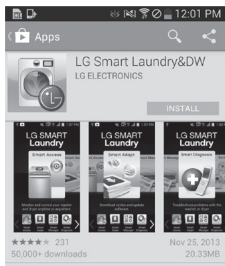


※ Images are for reference only. The actual LG Smart Laundry&DW application may be different.

Tag On cycles download using LG Smart Laundry&DW application

**1. Install 'LG Smart Laundry&DW' application on a NFC-equipped smartphone.**

- Install the application from the Play store and run it.



**2. Select 'Tag On'.**

- Home card and icons at the bottom of the screen are all available to use.



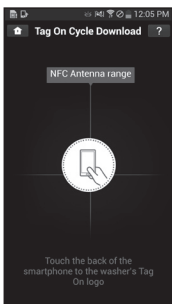
**3. Select Select 'Tag On Cycles Download'.**



**4. Touch the Tag On logo.**

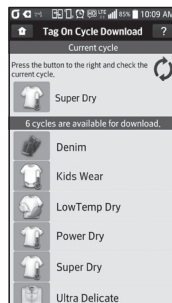
- When a Tag On screen appears (see at right), tap your smart phone on the Tag On icon on the right side of the washer's control panel.

- If it isn't recognized, touch [ ? ] on the upper right of the Tag On screen on your 'LG Smart Laundry&DW' application to see the detailed guide.(This might happen due to the different NFC antenna positions for each phone.)



**5 Select a cycle to download.**

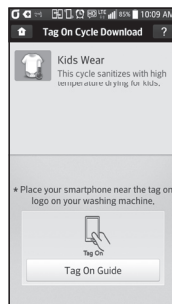
- You can also check the existing cycles already downloaded.



**6. Touch the Tag On logo.**

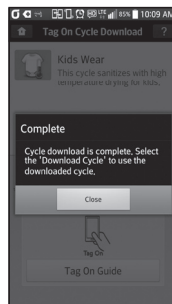
- When a Tag On screen appears (see at right), tap your smart phone on the Tag On icon on the right side of the washer's control panel.

- If it isn't recognized, touch [ ? ] on the upper right of the Tag On screen on your 'LG Smart Laundry&DW' application to see the detailed guide.(This might happen due to the different NFC antenna positions for each phone.)



**7. The new cycle is downloaded successfully!**

- Check whether the new cycle is downloaded by turning the cycle selector knob to Download Cycle.



※ Images are for reference only. The actual LG Smart Laundry&DW application may be different.

Laundry Stats

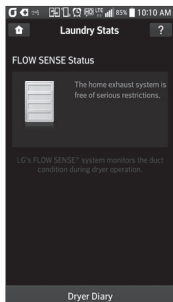
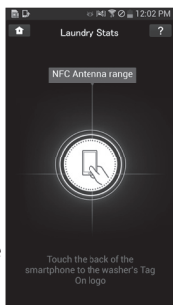
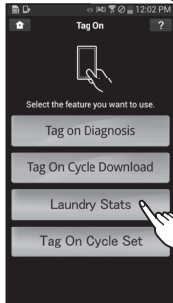
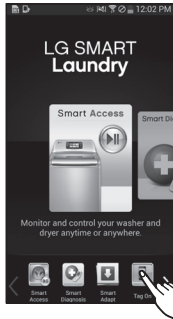
Laundry status can monitor the Flow Sense result in case your home exhaust system is clogged. Laundry Stats can also tell you details of your last 10 cycles.

1. Select 'Tag On' by using the top icons or the bottom icons.

2. Select 'Laundry Stats'.

4. Touch the Tag On logo.

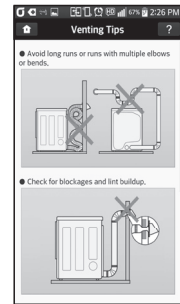
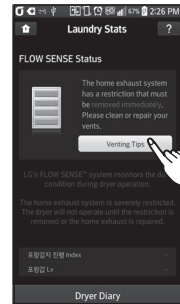
- When a Tag On screen appears (see at right), tap your smart phone on the Tag On icon on the right side of the washer's control panel.
- If it isn't recognized, touch [ ? ] on the upper right of the Tag On screen on your 'LG Smart Laundry&DW' application to see the detailed guide. (This might happen due to the different NFC antenna positions for each phone.)



Check the FLOW SENSE Status

1. Please check the FLOW SENSE Status in Laundry Stats screen.

2. Press the "Venting Tips" button when you home exhaust system blocked, please refer to the Guide about Exhaust check.

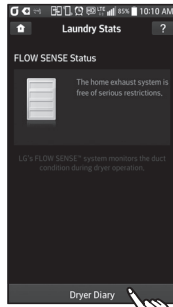


※ Images are for reference only. The actual LG Smart Laundry&DW application may be different.

Laundry Stats (Run Cycle Again) using LG Smart Laundry&DW application

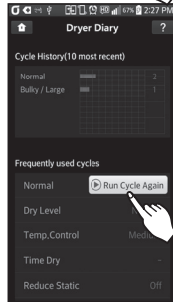
**1. Select 'Dryer Diary' on the Laundry Stats screen.**

- Select 'Dryer Diary' at the bottom of the Laundry Stats screen.
- The Dryer Diary display a chart showing the last 10 cycles used.
- Details of the Most Used Cycle and the Most Recent cycle will also be displayed.



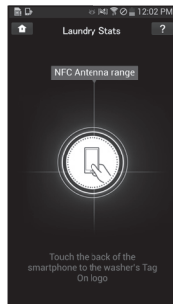
**2. Select 'Run Cycle Again' button.**

- The Most Used cycle or Most Recent cycle can be immediately started by select the 'Run Cycle Again' button.



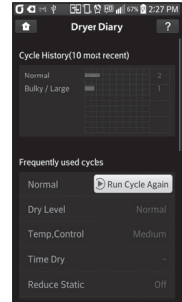
**3. Touch the Tag On logo.**

- When a Tag On screen appears(On the right), tap your smart phone on the Tag On icon on the right side of the dryer's control panel.
- If it isn't recognized, touch [ ? ] on the upper right of the Tag On screen on your 'LG Smart Laundry&DW' application to see the detailed guide. (This might happen due to the different NFC antenna positions for each phone.)



**4. Check whether washing starts with the selected cycle.**

- The screen as shown below appears and Drying starts immediately on the selected cycle.



※ Images are for reference only. The actual LG Smart Laundry&DW application may be different.

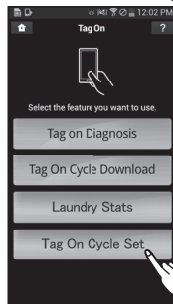
## Tag On Cycle Set

Tag On cycle Set allows you to automatically adjust the cycle and settings based on your laundry needs.

**1. Select 'Tag On' by using the top icons or the bottom icons.**

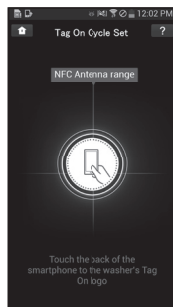


**2. Select 'Tag On Cycle Set'.**

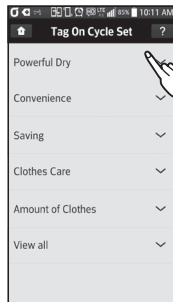


**3. Touch the Tag On logo.**

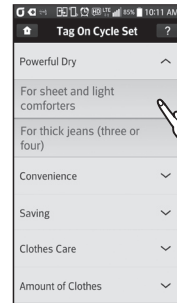
- When a Tag On screen appears (On the right), tap your smart phone on the Tag On icon on the right side of the dryer's control panel.
- If it isn't recognized, touch [ ? ] on the upper right of the Tag On screen on your 'LG Smart Laundry&DW' application to see the detailed guide. (This might happen due to the different NFC antenna positions for each phone.)



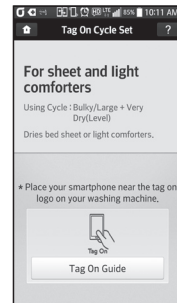
**4. Select a laundry category based on the issue you want the machine to focus on.**



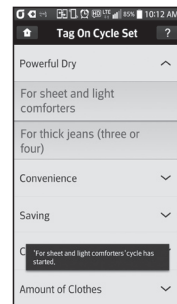
**5. After selecting the category, a list of specific cycles will appear. Select the cycle based on your needs.**



**6. When the Tag On screen appears (see at right), tap your smart phone to the Tag On logo on the right side of the washer's or dryer's control panel.**



**7. After tagging the machine with your phone, the cycle will automatically start. Verify the correct cycle and settings were selected.**



※ Images are for reference only. The actual LG Smart Laundry&DW application may be different.