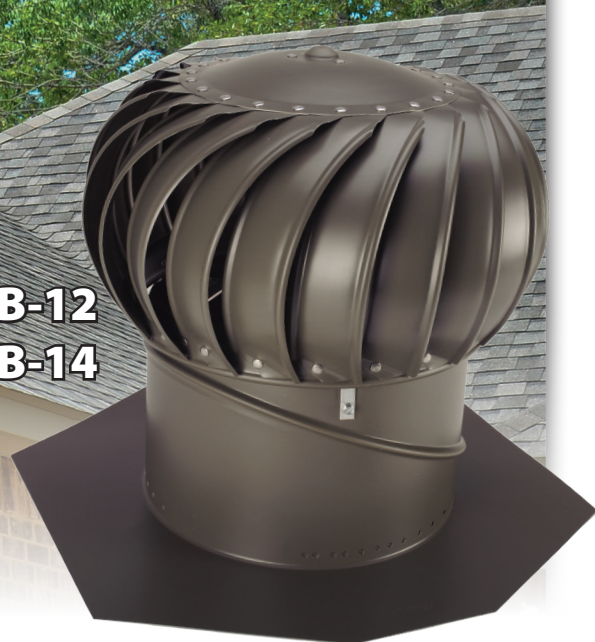




**BEB-12**  
**BEB-14**



**BIB-12**  
**BIB-14**

### foreverguarantee

The Quality & Performance of the Lomanco® Whirlybird® Turbine is Guaranteed Forever

### COMMON FEATURES:

- ▶ Reduces energy bills.
- ▶ Easy installation.
- ▶ Forever Guarantee - residential use only.
- ▶ Permanently lubricated upper and lower ball bearings that ensure long life and no maintenance.
- ▶ All-aluminum rust-free construction.
- ▶ Rigid spider-type structure.
- ▶ Riveted at every connection.
- ▶ 21 air-foil curved vanes with rolled edges to deflect water.
- ▶ Exclusive vari-pitch base adjusts to 12/12 roof pitch.†
- ▶ Large flashing for easy installation.
- ▶ Tested to withstand winds of 110 m.p.h.
- ▶ Reduces winter ice build up.
- ▶ Big Whirly - 14" moves up to 37% more air than the 12".

#### COLORS AVAILABLE - B SERIES



### How many Whirlybird® Vents do you need?

TURBINE VENT EXHAUST SYSTEMS	Attic floor space to be ventilated in square feet:					
	1000	1500	2000	2500	3000	3500
12"	2	2	3	4	4	5
14"	1	2	2	3	3	4
Intake						
Selected Turbine Size	12" 14"	12" 14"	12" 14"	12" 14"	12" 14"	12" 14"
C416	21 14	21 28	32 28	42 42	42 42	52 56
C616	15 10	15 19	22 19	29 29	29 29	36 38
C816	8 6	8 11	12 11	16 16	16 16	20 22
105/190	8 5	8 10	11 10	15 15	15 15	18 20
140	6 4	6 8	9 8	12 12	12 12	15 16
SV-10	9 6	9 11	13 11	17 17	17 17	21 22
DA-4/IV-9	15 10	15 20	22 20	29 29	29 29	36 39

### Hurricane caps available!

Model	Hole Size	Height	Base
B   B-12*	12	17¼	20 x 20
BEB-12*	12	17½	20 x 20
B   B-12TR*	12	20¼	20 x 20
BEB-12TR*	12	20½	20 x 20
B   B-14*	14	20	22 x 22
BEB-14*	14	20¾	22 x 22
GT-12	12	15¾	20 x 20
GEB-12	12	16	20 x 20

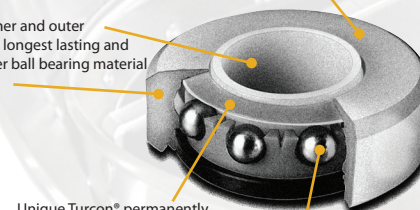


**GEB-12 & GT-12**(shown)  
GALVANIZED STEEL TURBINE  
† ADJUSTS TO 7/12 ROOF PITCH  
AVAILABLE IN MILL ONLY

### BEARING FACTS

Molded and fully machined raceways - not merely molded. Concentric to .0015 for low drag and quiet operation.

DuPont Delrin® inner and outer bearing rings - the longest lasting and smoothest polymer ball bearing material available.



Unique Turcon® permanently seals lubricant in and dirt and moisture out.

100 Grade 302 series stainless steel balls for low turning resistance and high resistance to moisture.

#### All B Series Turbines

