



Transfer 26 Hydro Massage Walk In Bathtub (Wheelchair Accessible)



OLA2652H-L-HB Left Drain



OLA2652H-R-HB Right Drain

Actual Size: 26'' W x 52'' L x 42'' H
Shipping Size: 28'' W x 54'' L x 50'' H
Shipping Weight: 300lbs.
Net Weight: 220lbs.
Water Capacity: 90 gal. US (unoccupied)
55-75 gal. US (occupied)
Approx. Drain Time: +/- 2 minutes (unoccupied bathtub)
at ideal home plumbing conditions
Approx. Fill Time: 18 Gallons per minute
based on in-house water pressure
(Disclaimer: Drainage time depends on house drain conditions.)

Options:

- Left or Right Hinged Door

Included Features:

1. Acrylic Tub Shell:
 - High quality acrylic
 - Excellent color uniformity
 - High Gloss White Finish
 - Fiberglass Reinforced
2. Low threshold step in 7''
3. Stainless Steel Frame with Adjustable Leveling Legs
4. Seat: 19.5'' W x 19'' H x 19'' L
5. One (1) front and one (1) end removable access panels
6. Wall mounted stainless steel safety grab bar in plated chrome finish
7. L-shaped door for wheelchair accessible
8. Hydro Massage System: (5AMP 6000W)
 - Six (6) adjustable and seven (7) fixed hydro jets
 - Hydro massage air low intensity control
 - In-line water heater (5.5AMP 650W)
 - On/Off push control
9. Five-Piece Fast Fill Huntington Brass Roman faucet set (chrome finish)
 - 18 GPM (Average) @ 60 PSI
 - Pull out, hand held, chrome plated shower with 5 ft. retractable stainless steel braided hose

Plumbing:

- Two (2) x 5' long stainless steel braided water supply lines with 3/4'' IPS connectors
- Two (2) x 2'' floor drains
- Two (2) PVC 2'' drain elbows

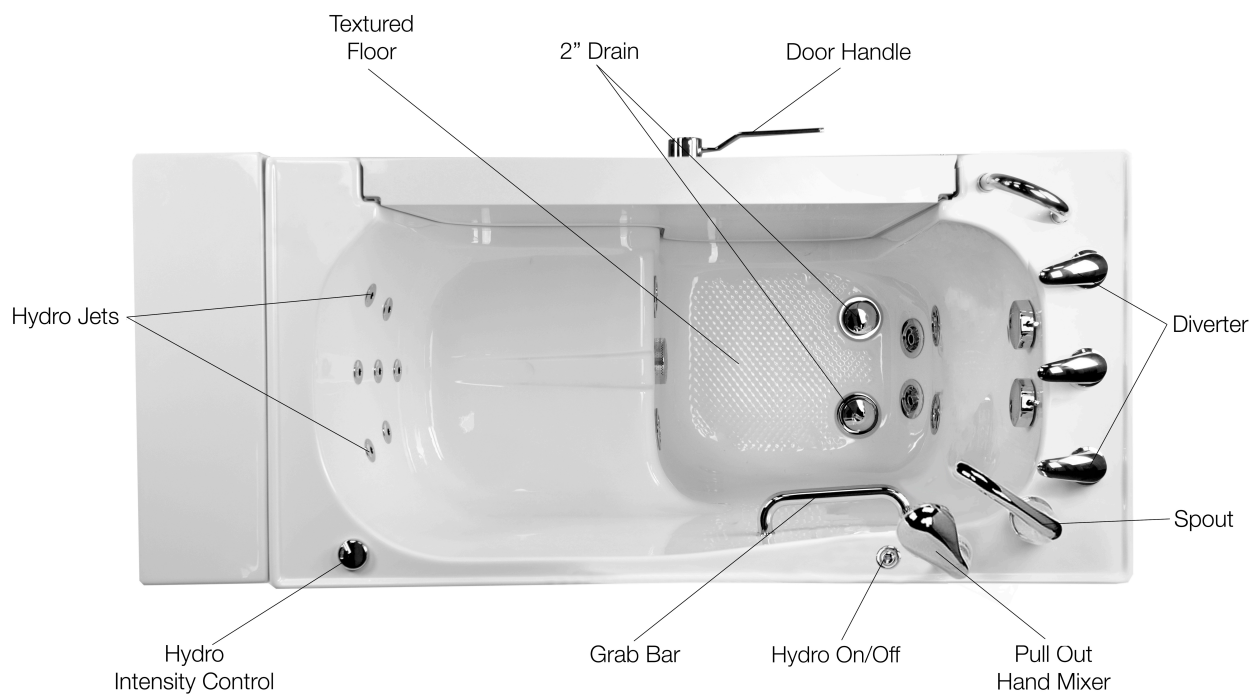
Electrical:

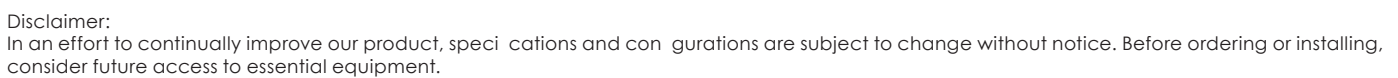
Electrical requirement is one dedicated 120 V electrical line with a 20AMP GFCI standard three prong outlet

Warranty:

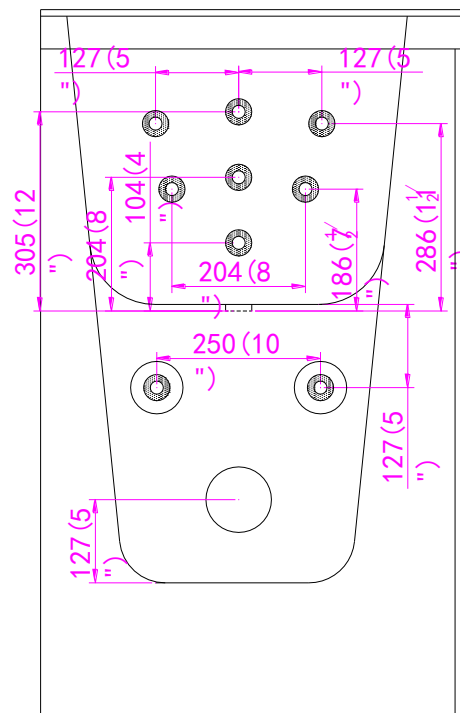
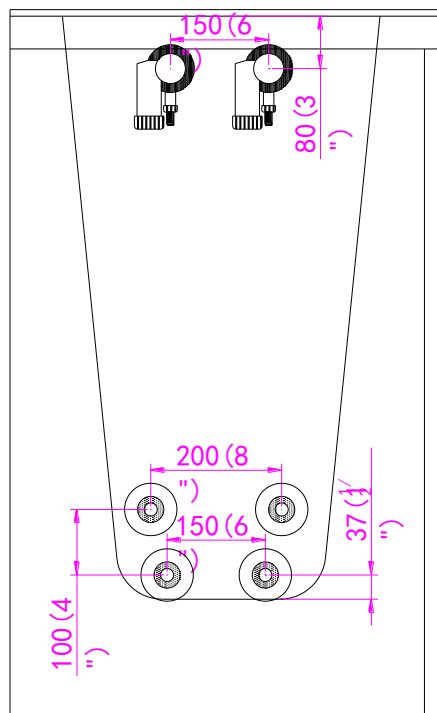
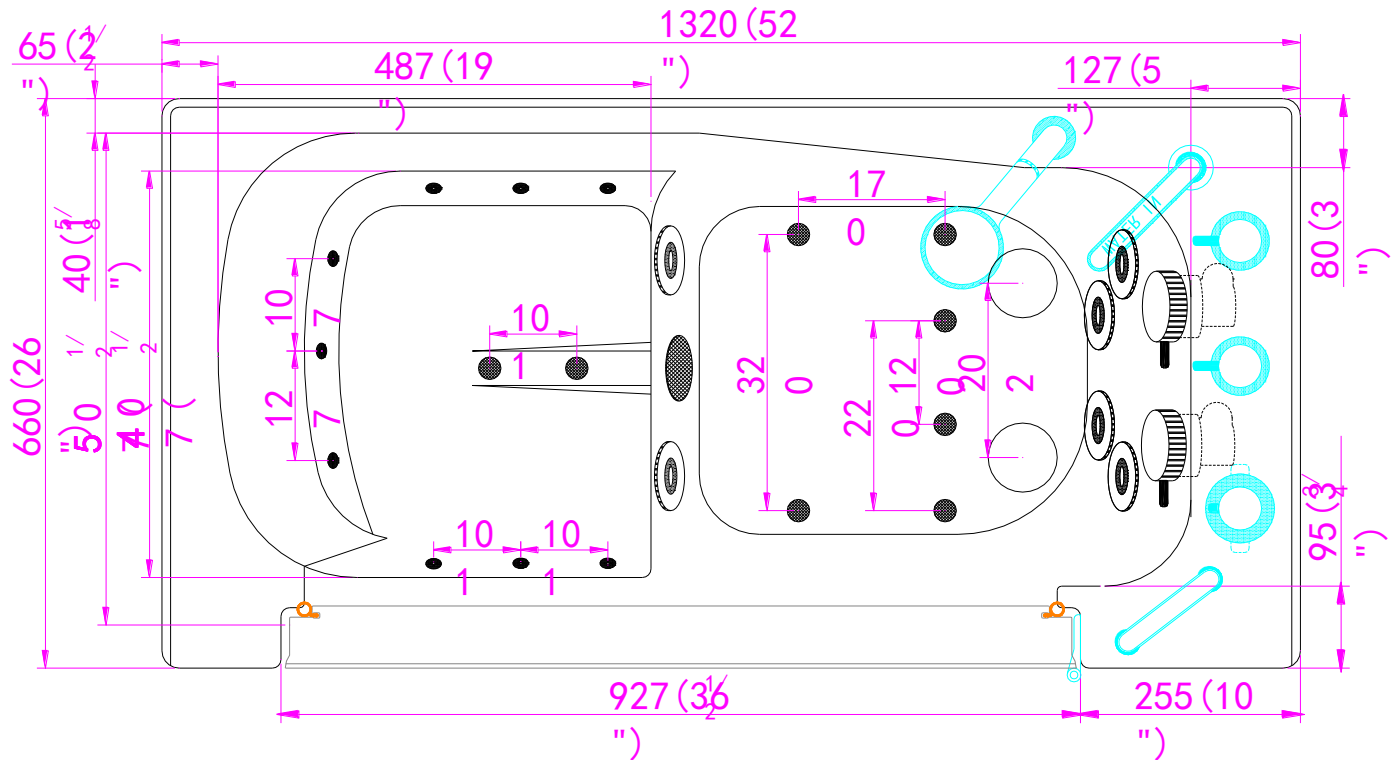
- Lifetime limited warranty on acrylic walk in tub shell, frame, and door.
- 5 Year parts warranty*

Transfer 26 Hydro Massage Walk In Bathtub (Wheelchair Accessible)





Transfer 26 Hydro Massage Walk In Bathtub (Wheelchair Accessible)



Disclaimer:

In an effort to continually improve our product, specifications and configurations are subject to change without notice. Before ordering or installing, consider future access to essential equipment.