



Wall Pack 400w MH Equivalent

13000 lm | 120-277VAC | Model 53308161 | Part WP-130-850-MV

- > Energy Saving 100 Watt Integrated LED
- > Daylight 5000K CCT
- > Lasts 45 years* or 50,000 Hours Continuous Use
- > Wall Mount Installation
- > Full Cut-off
- > 5 Year Limited Warranty



SPECIFICATIONS

Model	53308161
Part	WP-130-850-MV
Description	Wall Pack 400w MH Equivalent, Photocell Compatible
Input Voltage (VAC)	120-277
Wattage	100
Dimmability	Non-Dimmable
Average Rated Life ¹	50,000 hours
Typical Lumens ²	13000
CCT ³	5000K
Location Rating	UL Wet
CRI ⁴	≥80
Beam Angle	110
Operating Temperature	Min -40°F (-40° C), Max 113°F (45° C)
Power Factor	>0.9
R9	10
DUV	0.00044
Operating Frequency (Hz)	50/60

1 Hours lifetime with 70% lumen maintenance

2 Thermally stable typical lumens (±10%)

3 Thermally stable CCT (±10%)

4 Color rendering index/Ra

TO ORDER:

www.ETiSSL.com

Call: 1.855.ETi.SSLI

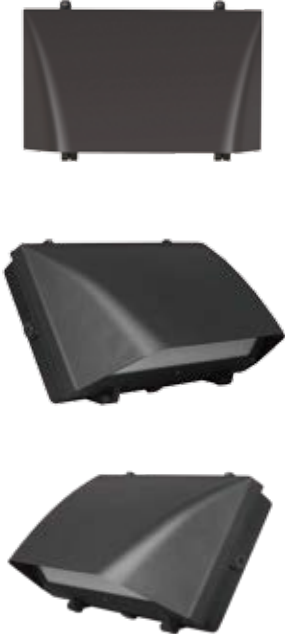
1.855.384.7754





Wall Pack 400w Equivalent

13000 lm | 120-277VAC | Model 53308161 | Part WP-130-850-MV



SHIPPING INFORMATION

Model	53308161
Part	WP-130-850-MV
UPC	849489008851
Product Dimensions (L x W x H in.)	16 x 10 5/8 x 7 7/8
Product Dimensions (L x W x H cm.)	40.5 x 27.0 x 20.0
Product Weight (lbs.)	9.8
Inner Carton Quantity	N/A
Inner Carton Bar Code	N/A
Inner Carton Dimensions (L x W x H in.)	N/A
Inner Carton Dimensions (L x W x H cm.)	N/A
Inner Carton Weight (lbs)	N/A
Master Carton Quantity	1
Master Carton Bar Code	50849489008856
Master Carton Dimensions (L x W x H in.)	18 x 12 1/8 x 10
Master Carton Dimensions (L x W x H cm.)	44.8 x 30.8 x 25.2
Master Carton Weight (lbs)	11.53
Pallet Quantity	64

AVAILABLE ACCESSORIES

Model #	Part #	Description
20170001	PE-MV-01	Photocell for Wall Pack

This device complies with part 15 of the FCC Rules. Operation is subject to the following two conditions: (1) This device may not cause harmful interference, and (2) this device must accept any interference received, including interference that may cause undesired operation. For FCC Part 15 user information, Please see www.ETiSSL.com/fcc15b

TO ORDER:
www.ETiSSL.com
Call: 1.855.ETi.SSLI
1.855.384.7754

Manufactured by Elec-Tech
International Co., Ltd
ETi Solid State Lighting, Inc.
720 Corporate Woods Parkway
Vernon Hills, IL 60061
Phone: 855.384.7754
Fax: 847.383.6256