



OMS THD SKU # 1000 575 060

Model # TY373-1411

# ASSEMBLY INSTRUCTIONS

## 72in 140 Light LED Cool White Twinkling PVC Castle

### USE AND CARE GUIDE

#### PLANNING ASSEMBLY

Carefully remove all the parts from the box and place them on a flat surface. Please note that many of the parts are connected by the lighting string that runs throughout the item. Remove the parts with care not to damage the lighting string or parts. Read the entire manual prior to assembly and identify all the parts included in the package against the parts list. If any parts are missing or damaged do not attempt assembly. Contact our customer service center or return the item to place of purchase with purchase receipt. Assembly of this product may require more than one person.

#### Pre-Operation

**CAUTION:** Grasp the plug to insert or remove from the power source. Do not unplug by pulling on cord.

**CAUTION:** The lighting string on this product is rated at 33.6 Watts (0.28Amps). Do not overload. Do not connect to another lighting string, decorative outfit or other electrical products. Before you use or re-use this product, inspect it carefully. Discard or return to place of purchase with purchase receipt if the product has cuts, damage, frayed wire insulation on cords, cracks in the socket enclosures, loose connections or exposed copper wire.

#### Care and Cleaning

- Carefully remove the product from wherever it is placed. This helps to avoid any undue strain or stress on the product connections and wires. If the product is placed somewhere other than the ground it should be well secured and stable.
- Wipe the unit with a damp cloth and allow the unit to dry before storing.
- Store the product neatly in a cool, dry location protected from sunlight.

#### Guarantee

##### What is Covered

The product is intended for residential seasonal use for 90 days per year. This product is covered by a 90 days limited guarantee due to defects in material and workmanship. Return the product with purchase receipts to the location of purchase for refund within 90 days of purchase.

##### What is Not Covered

This warranty does not cover commercial use, normal wear and tear, products not used in accordance with directions provided on or with the product, burn out of bulbs or LEDs, batteries, products that have been subjected to unauthorized repair and/or modification and damage caused by shipping and improper handling, alterations, misuse or accidents. Questions, problems, missing parts? Before returning to the store, call Home Accents Holiday Customer Service 8 a.m.-6 p.m., EST, Monday-Friday



#### Thank you!

We appreciate the trust and confidence you have placed in Home Accents through the purchase of this 72in 140 Light LED Cool White Twinkling PVC Castle. We strive to continually create quality products designed to enhance your home. Visit us online to see our full line of products available for your home decoration needs. Thank you for choosing Home Accents!

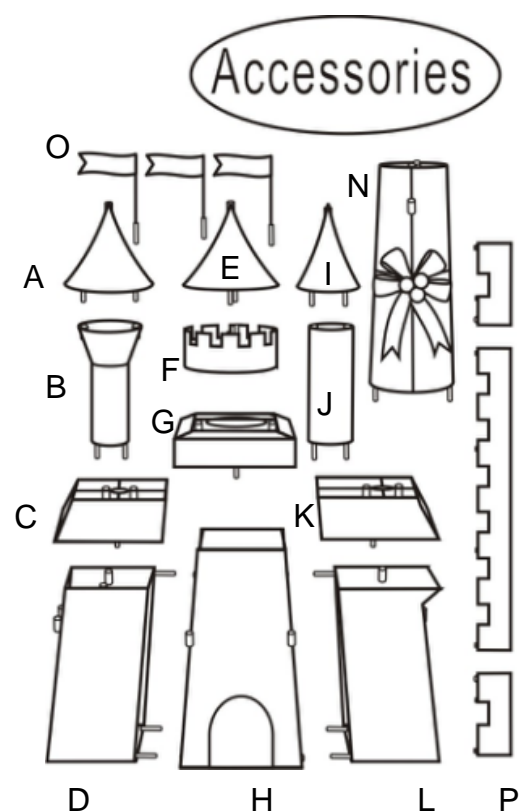
1-877-527-0313

HOMEACCENTSHOLIDAY.COM

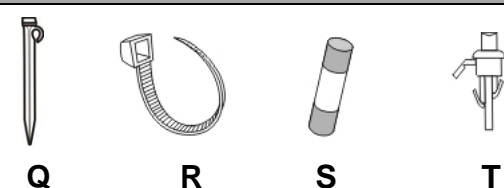
Parts List		
Locater	Name	Qty.
A	Left Roof of Tower	1
B	Left Tower Stack	1
C	Left Second Floor	1
D	Left First Floor	1
E	Roof of Main Tower	1
F	Watch Tower Wall	1
G	Main Second Floor	1
H	Main First Floor	1
I	Right Roof of Tower	1
J	Right Tower Stack	1
K	Right Second Floor	1
L	Right First Floor	1
M	Front Balcony	1
N	Main Third Floor	1
O	Flag	3
P	Side Balconies	2

Hardware List		
Locater	Name	Qty.
Q	Ground Stake	4
R	Plastic Tie	10
S	Spare Fuse	2
T	Spare Bulb	8

#### Diagram of Parts



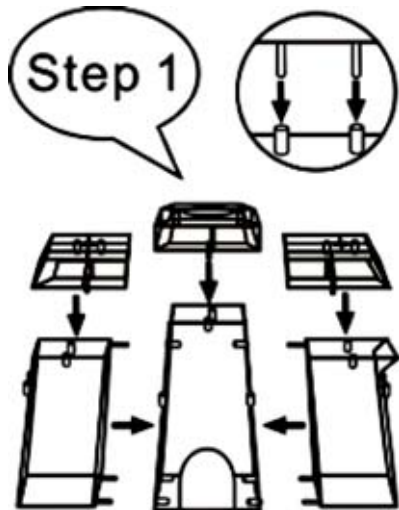
#### Hardware



# ASSEMBLY

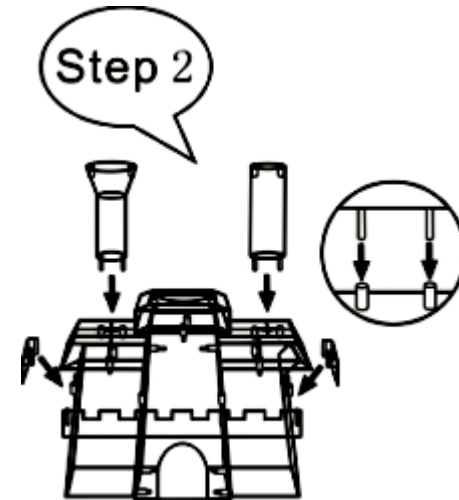
## 1. Assembling the First and Second Floor

Insert the connecting rods with the matching holes on the Left First Floor (D) and the Right First Floor (L) to the Main First Floor (H) and fasten with Plastic Ties (R). Insert the connecting rods on the bottom of the Left Second Floor (C) into the matching holes on the top of the Left First Floor (D). Insert the connecting rods on the bottom of the Main Second Floor (G) into the matching holes on the top of the Main First Floor (H). Insert the connecting rods of the Right Second Floor (K) into the matching holes on the top of the Right First Floor (L). Fasten all with Plastic Ties (R).



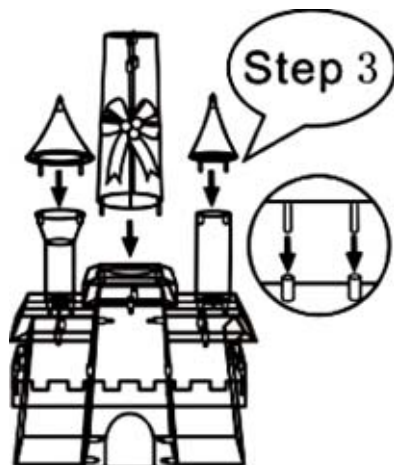
## 2. Assembling the Tower Stacks and Balconies

Insert the connecting rods on the bottom of the Left Tower Stack (B) into the matching holes of the Left Second Floor (C). Insert the connecting rods on the bottom of the Right Tower Stack (J) into the matching holes on the top of the Right Second Floor (K). Fasten with Plastic Ties (R). Place the Front Balcony (M) in front of the Main First Floor and insert the connecting rods into the matching holes on the Main First Floor sections. Place the Side Balconies (P) at the sides of Left & Right First Floor and insert the connecting rods into the matching holes on the Left & Right First Floor. Fasten with Plastic Ties (R).



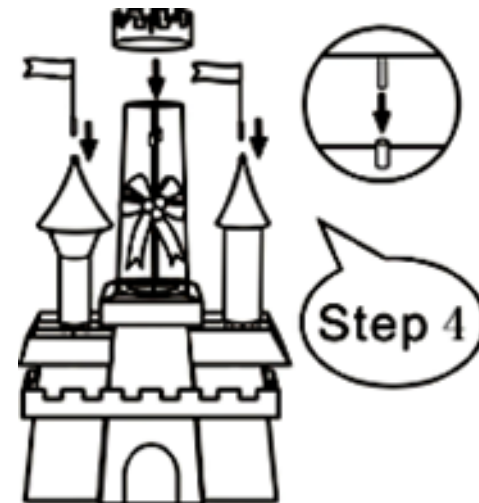
## 3. Assembling the Roof of Tower

Insert the connection rods on the bottom of the Left Roof of Tower (A) into the matching holes of the top of the Left Tower Stack (B). Insert the connection rods on the bottom of the Right Roof of Tower (I) into the connecting holes on the top of the Right Tower Stack (J). Insert the connecting rods on the bottom of the Main Third Floor (N) into the matching holes of the top of the Main Second Floor (G). Fasten all with Plastic Ties (R).



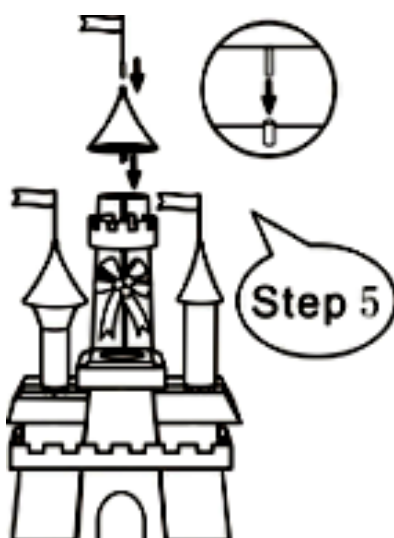
## 4. Assembling the Flags and the Watch Tower Wall

Insert the connecting rods on the Flags (O) into the connecting holes on the Left Roof of Tower (A) and the Right Roof of Tower (I). Insert the connecting rods on the Watch Tower Wall (F) into the matching holes on the Main Third Floor (N) and fasten with Plastic Ties (R).



## 5. Assembling the Roof of Main Tower

Insert the connecting rods on the Roof of Main Tower (E) into the matching holes of the Main Third Floor (N) and fasten with Plastic Ties (R) then insert Flag (O) to the top of Roof of Main Tower.



## 6. Assembling the Castle to the Ground

Secure the Castle to the ground with the Ground Stake (Q) by placing a Ground Stake at each corner over the metal frame then into the ground.

