

# D-Series Size 2 LED Wall Luminaire

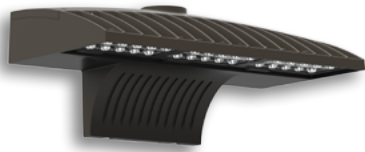


Catalog  
Number

Notes

Type

Hit the Tab key or mouse over the page to see all interactive elements.



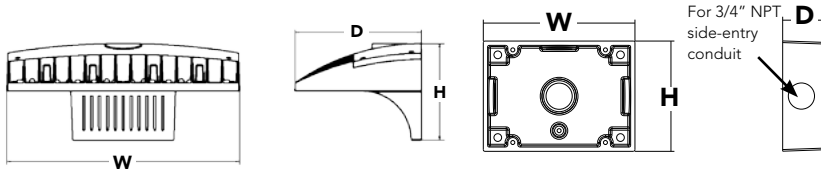
d<sup>series</sup>

## Specifications Luminaire

<b>Width:</b>	18-1/2" (47.0 cm)	<b>Weight:</b>	21 lbs (9.5 kg)
<b>Depth:</b>	10" (25.4 cm)		
<b>Height:</b>	7-5/8" (19.4 cm)		

## Back Box (BBW)

<b>Width:</b>	5-1/2" (14.0 cm)	<b>BBW Weight:</b>	1 lbs (0.5 kg)
<b>Depth:</b>	1-1/2" (3.8 cm)		
<b>Height:</b>	4" (10.2 cm)		



## Introduction

The D-Series Wall luminaire is a stylish, fully integrated LED solution for building-mount applications. It features a sleek, modern design and is carefully engineered to provide long-lasting, energy-efficient lighting with a variety of optical and control options for customized performance.

With an expected service life of over 20 years of nighttime use and up to 76% in energy savings over comparable 400W metal halide luminaires, the D-Series Wall is a reliable, low-maintenance lighting solution that produces sites that are exceptionally illuminated.

## Ordering Information

**EXAMPLE: DSXW2 LED 30C 700 40K T3M MVOLT DDBTXD**

DSXW2 LED										
Series	LEDs	Drive Current		Color temperature		Distribution		Voltage	Mounting	Control Options
DSXW2 LED	20C 20 LEDs (two engines)	350	350 mA	30K	3000 K	T2S	Type II Short	MVOLT <sup>1</sup>	<b>Shipped included</b> (blank) Surface mounting bracket	<b>Shipped installed</b> PE Photoelectric cell, button type <sup>4</sup> PER NEMA twist-lock receptacle only (no controls) DMG 0-10V dimming driver (no controls) DCR Dimmable and controllable via ROAM <sup>®</sup> (no controls) <sup>5</sup> PIRH 180° motion/ambient light sensor, 15-30' mtg ht <sup>6</sup>
		530	530 mA	40K	4000 K	T2M	Type II Medium	120 <sup>1</sup>		
30C 30 LEDs (three engines)		700	700 mA	50K	5000 K	T3S	Type III Short	208 <sup>1</sup>	<b>Shipped separately<sup>3</sup></b> BBW Surface-mounted back box (for conduit entry)	PIRH180° Motion/ambient light sensor, 15-30' mtg ht <sup>6</sup> PIRH1FC3V Motion/ambient sensor, 8-15' mounting height, ambient sensor enabled at 1fc <sup>7</sup> PIRH1FC3V Motion/ambient sensor, 15-30' mounting height, ambient sensor enabled at 1fc <sup>7</sup>
		1000	1000 mA (1 A)	AMBPC	Amber phosphor converted	T3M	Type III Medium	240 <sup>1</sup>		
						T4M	Type IV Medium	277 <sup>1</sup>		
						TFTM	Forward Throw Medium	347 <sup>2</sup>		
						ASYDF	Asymmetric diffuse	480 <sup>2</sup>		

## Other Options

## Finish (required)

### Shipped installed

SF	Single fuse (120, 277, 347V) <sup>8</sup>
DF	Double fuse (208, 240, 480V) <sup>8</sup>
HS	House-side shield <sup>3</sup>
SPD	Separate surge protection <sup>9</sup>

### Shipped separately<sup>9</sup>

BSW	Bird-deterrent spikes
WG	Wire guard
VG	Vandal guard

DDBXD	Dark bronze	DSSXD	Sandstone	DWHGXD	Textured white
DBLXD	Black	DDBTXD	Textured dark bronze	DSSTXD	Textured sandstone
DNAXD	Natural aluminum	DBLBXD	Textured black		
DWHXD	White	DNATXD	Textured natural aluminum		

## Accessories

Ordered and shipped separately.

DLL127F 1.5 JU	Photocell - SSL twist-lock (120-277V) <sup>10</sup>
DLL347F 1.5 CUL JU	Photocell - SSL twist-lock (347V) <sup>10</sup>
DLL480F 1.5 CUL JU	Photocell - SSL twist-lock (480V) <sup>10</sup>
DSHORT SBK U	Shorting cap <sup>10</sup>
DSXWHS U	House-side shield (one per light engine)
DSXWBSW U	Bird-deterrent spikes
DSXW2WG U	Wire guard accessory
DSXW2VG U	Vandal guard accessory
DSXW2BBW DDBXD U	Back box accessory (specify finish)

## NOTES

- MVOLT driver operates on any line voltage from 120-277V (50/60 Hz). Specify 120, 208, 240 or 277 options only when ordering with fusing (SF, DF options), or photocontrol (PE option).
- Available with 30 LED/700mA options only (DSXW2 LED 30C 700). DMG option not available.
- Also available as a separate accessory; see Accessories information.
- Photocontrol (PE) requires 120, 208, 240 or 347 voltage option. Not available with motion/ambient light sensors (PIR or PIRH).
- Specifies a ROAM<sup>®</sup> enabled luminaire with 0-10V dimming capability; PER option required. Not available with 347V, 480V or PIRH. Additional hardware and services required for ROAM<sup>®</sup> deployment; must be purchased separately. Call 1-800-442-6745 or email: sales@roomservices.net.
- Specifies the Sensor Switch SBGR-6-ODP control; see Outdoor Control Technical Guide for details. Includes ambient light sensor. Not available with "PE" option (button type photocell) or DCR. Dimming driver standard.
- PIR and PIR1FC3V specify the SensorSwitch SBGR-10-ODP control; PIRH and PIRH1FC3V specify the SensorSwitch SBGR-6-ODP control; see Motion Sensor Guide for details. Dimming driver standard. Not available with PER5 or PER7. Ambient sensor disabled when ordered with DCR. Separate on/off required.
- Single fuse (SF) requires 120, 277 or 347 voltage option. Double fuse (DF) requires 208, 240 or 480 voltage option.
- See the electrical section on page 2 for more details.
- Requires luminaire to be specified with PER option. Ordered and shipped as a separate line item.



# Performance Data

## Lumen Output

Lumen values are from photometric tests performed in accordance with IESNA LM-79-08. Data is considered to be representative of the configurations shown, within the tolerances allowed by Lighting Facts. Contact factory for performance data on any configurations not shown here.

LEDs	Drive Current (mA)	System Watts	Dist. Type	30K					40K					50K					AMBER				
				Lumens	B	U	G	LPW	Lumens	B	U	G	LPW	Lumens	B	U	G	LPW	Lumens	B	U	G	LPW
20C (20 LEDs)	350 mA	25W	T2S	2,783	1	0	1	111	2,989	1	0	1	120	3,007	1	0	1	120	1,720	1	0	1	69
			T2M	2,708	1	0	1	108	2,908	1	0	1	116	2,926	1	0	1	117	1,673	1	0	1	67
			T3S	2,748	1	0	1	110	2,951	1	0	1	118	2,970	1	0	1	119	1,698	0	0	1	68
			T3M	2,793	1	0	1	112	2,999	1	0	1	120	3,018	1	0	1	121	1,726	1	0	1	69
			T4M	2,756	1	0	1	110	2,959	1	0	1	118	2,978	1	0	1	119	1,703	0	0	1	68
			TFTM	2,754	1	0	1	110	2,957	1	0	1	118	2,975	1	0	1	119	1,701	0	0	1	68
	530 mA	36W	T2S	4,029	1	0	1	112	4,327	1	0	1	120	4,354	1	0	1	121	1,698	0	0	1	68
			T2M	3,920	1	0	1	109	4,210	1	0	1	117	4,236	1	0	1	118	1,726	1	0	1	69
			T3S	3,979	1	0	1	111	4,272	1	0	1	119	4,299	1	0	1	119	1,720	1	0	1	69
			T3M	4,044	1	0	1	112	4,342	1	0	2	121	4,369	1	0	2	121	1,701	0	0	1	68
			T4M	3,990	1	0	1	111	4,284	1	0	1	119	4,311	1	0	1	120	1,703	0	0	1	68
			TFTM	3,986	1	0	1	111	4,281	1	0	1	119	4,307	1	0	1	120	1,673	1	0	1	67
	700 mA	47W	T2S	5,130	1	0	1	109	5,509	1	0	1	117	5,544	1	0	1	118	2,473	1	0	1	69
			T2M	4,991	1	0	1	106	5,360	1	0	1	114	5,393	1	0	2	115	2,406	1	0	1	67
			T3S	5,066	1	0	1	108	5,440	1	0	1	116	5,474	1	0	1	116	2,442	1	0	1	68
			T3M	5,148	1	0	2	110	5,528	1	0	2	118	5,563	1	0	2	118	2,482	1	0	1	69
			T4M	5,080	1	0	1	108	5,455	1	0	1	116	5,489	1	0	2	117	2,449	1	0	1	68
			TFTM	5,076	1	0	1	108	5,450	1	0	1	116	5,484	1	0	2	117	2,447	1	0	1	68
	1000 mA	74W	T2S	7,148	1	0	1	97	7,675	1	0	1	104	7,723	1	0	1	104	3,060	1	0	1	65
			T2M	6,954	1	0	2	94	7,467	1	0	2	101	7,514	2	0	2	102	2,977	1	0	1	63
			T3S	7,058	1	0	1	95	7,579	1	0	1	102	7,626	1	0	2	103	3,021	1	0	1	64
			T3M	7,173	1	0	2	97	7,702	1	0	2	104	7,750	1	0	2	105	3,070	1	0	1	65
			T4M	7,077	1	0	2	96	7,599	1	0	2	103	7,647	1	0	2	103	3,029	1	0	1	64
			TFTM	7,071	1	0	2	96	7,593	1	0	2	103	7,641	1	0	2	103	3,027	1	0	1	64
30C (30 LEDs)	350 mA	36W	T2S	4,160	1	0	1	116	4,467	1	0	1	124	4,495	1	0	1	125	2,573	1	0	1	103
			T2M	4,047	1	0	1	112	4,346	1	0	1	121	4,373	1	0	1	121	2,503	1	0	1	100
			T3S	4,107	1	0	1	114	4,411	1	0	1	123	4,438	1	0	1	123	2,541	1	0	1	102
			T3M	4,174	1	0	1	116	4,482	1	0	2	125	4,511	1	0	2	125	2,582	1	0	1	103
			T4M	4,119	1	0	1	114	4,423	1	0	1	123	4,450	1	0	1	124	2,547	1	0	1	102
			TFTM	4,115	1	0	1	114	4,419	1	0	1	123	4,447	1	0	1	124	2,545	1	0	1	102
	530 mA	54W	T2S	6,001	1	0	1	111	6,444	1	0	1	119	6,485	1	0	1	120	2,573	1	0	1	71
			T2M	5,839	1	0	1	108	6,270	1	0	2	116	6,309	1	0	2	117	2,503	1	0	1	70
			T3S	5,926	1	0	1	110	6,363	1	0	1	118	6,403	1	0	1	119	2,541	1	0	1	71
			T3M	6,022	1	0	2	112	6,467	1	0	2	120	6,507	1	0	2	121	2,582	1	0	1	72
			T4M	5,942	1	0	1	110	6,381	1	0	2	118	6,420	1	0	2	119	2,547	1	0	1	71
			TFTM	5,937	1	0	1	110	6,375	1	0	2	118	6,415	1	0	2	119	2,545	1	0	1	71
	700 mA	71W	T2S	7,609	1	0	1	107	8,170	1	0	1	115	8,221	2	0	2	116	3,696	1	0	1	68
			T2M	7,402	1	0	2	104	7,949	2	0	2	112	7,999	2	0	2	113	3,596	1	0	1	67
			T3S	7,513	1	0	1	106	8,068	1	0	2	114	8,118	1	0	2	114	3,649	1	0	1	68
			T3M	7,635	1	0	2	108	8,199	1	0	2	115	8,250	2	0	3	116	3,709	1	0	2	69
			T4M	7,533	1	0	2	106	8,089	1	0	2	114	8,140	1	0	2	115	3,659	1	0	1	68
			TFTM	7,527	1	0	2	106	8,083	1	0	2	114	8,133	1	0	2	115	3,656	1	0	1	68
	1000 mA	109W	T2S	10,468	2	0	2	96	11,241	2	0	2	103	11,311	2	0	2	104	4,559	1	0	1	64
			T2M	10,184	2	0	2	93	10,936	2	0	2	100	11,004	2	0	2	101	4,436	1	0	2	62
			T3S	10,336	1	0	2	95	11,099	1	0	2	102	11,169	2	0	2	102	4,502	1	0	1	63
			T3M	10,505	2	0	3	96	11,280	2	0	3	103	11,351	2	0	3	104	4,575	1	0	2	64
			T4M	10,364	1	0	2	95	11,129	1	0	2	102	11,199	2	0	2	103	4,514	1	0	2	64
			TFTM	10,356	1	0	2	95	11,120	2	0	2	102	11,190	2	0	2	103	4,510	1	0	1	64

**Note:** Available with phosphor-converted amber LED's (nomenclature AMBPC). These LED's produce light with 97+% >530 nm. Output can be calculated by applying a 0.7 factor to 4000 K lumen values and photometric files.

## Performance Data

### Lumen Ambient Temperature (LAT) Multipliers

Use these factors to determine relative lumen output for average ambient temperatures from 0-40°C (32-104°F).

Ambient		Lumen Multiplier
0°C	32°F	1.02
10°C	50°F	1.01
20°C	68°F	1.00
<b>25°C</b>	<b>77°F</b>	<b>1.00</b>
30°C	86°F	1.00
40°C	104°F	0.98

### Electrical Load

LEDs	Drive Current (mA)	System Watts	Current (A)					
			120V	208V	240V	277V	347V	480V
20C	350	25 W	0.23	0.13	0.12	0.10	-	-
	530	36 W	0.33	0.19	0.17	0.14	-	-
	700	47 W	0.44	0.25	0.22	0.19	-	-
	1000	74 W	0.68	0.39	0.34	0.29	-	-
30C	350	36 W	0.33	0.19	0.17	0.14	-	-
	530	54 W	0.50	0.29	0.25	0.22	-	-
	700	71 W	0.66	0.38	0.33	0.28	0.23	0.16
	1000	109 W	1.01	0.58	0.50	0.44	-	-

### Projected LED Lumen Maintenance

Data references the extrapolated performance projections for the **DSXW2 LED 30C 1000** platform in a **25°C ambient**, based on 10,000 hours of LED testing (tested per IESNA LM-80-08 and projected per IESNA TM-21-11).

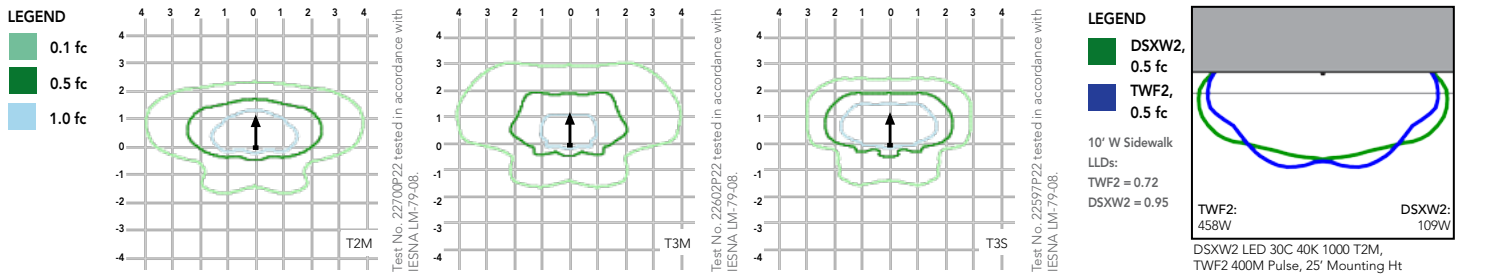
To calculate LLF, use the lumen maintenance factor that corresponds to the desired number of operating hours below. For other lumen maintenance values, contact factory.

Operating Hours	0	25,000	50,000	100,000
Lumen Maintenance Factor	1.0	0.95	0.92	0.87

## Photometric Diagrams

To see complete photometric reports or download .ies files for this product, visit Lithonia Lighting's [D-Series Wall Size 2 homepage](#).

Isofootcandle plots for the DSXW2 LED 30C 1000 40K. Distances are in units of mounting height (25').



## FEATURES & SPECIFICATIONS

### INTENDED USE

The energy savings, long life and easy-to-install design of the D-Series Wall Size 2 make it the smart choice for building-mounted doorway and pathway illumination for nearly any facility.

### CONSTRUCTION

Two-piece die-cast aluminum housing has integral heat sink fins to optimize thermal management through conductive and convective cooling. Modular design allows for ease of maintenance. The LED driver is mounted to the door to thermally isolate it from the light engines for low operating temperature and long life. Housing is completely sealed against moisture and environmental contaminants (IP65).

### FINISH

Exterior parts are protected by a zinc-infused Super Durable TGIC thermoset powder coat finish that provides superior resistance to corrosion and weathering. A tightly controlled multi-stage process ensures a minimum 3 mils thickness for a finish that can withstand extreme climate changes without cracking or peeling. Available in textured and non-textured finishes.

### OPTICS

Precision-molded proprietary acrylic lenses provide multiple photometric distributions tailored specifically to building mounted applications. Light engines are available in 3000 K (70 min. CRI), 4000 K (70 min. CRI) or 5000 K (70 min. CRI) configurations.

### ELECTRICAL

Light engine(s) consist of 10 high-efficacy LEDs mounted to a metal-core circuit board to maximize heat dissipation and promote long life (L87/100,000 hrs at 25°C). Class 1 electronic drivers have a power factor >90%, THD <20%, and a minimum 2.5KV surge rating. When ordering the SPD option, a separate surge protection device is installed within the luminaire which meets a minimum Category C Low (per ANSI/IEEE C62.41.2).

### INSTALLATION

Included universal mounting bracket attaches securely to any 4" round or square outlet box for quick and easy installation. Luminaire has a slotted gasket wireway and attaches to the mounting bracket via corrosion-resistant screws.

### LISTINGS

CSA certified to U.S. and Canadian standards. Rated for -40°C minimum ambient.

DesignLights Consortium® (DLC) qualified product. Not all versions of this product may be DLC qualified. Please check the DLC Qualified Products List at [www.designlights.org](http://www.designlights.org) to confirm which versions are qualified.

### WARRANTY

Five-year limited warranty. Complete warranty terms located at [www.acuitybrands.com/CustomerResources/Terms\\_and\\_conditions.aspx](http://www.acuitybrands.com/CustomerResources/Terms_and_conditions.aspx).

**Note:** Actual performance may differ as a result of end-user environment and application. All values are design or typical values, measured under laboratory conditions at 25 °C. Specifications subject to change without notice.

