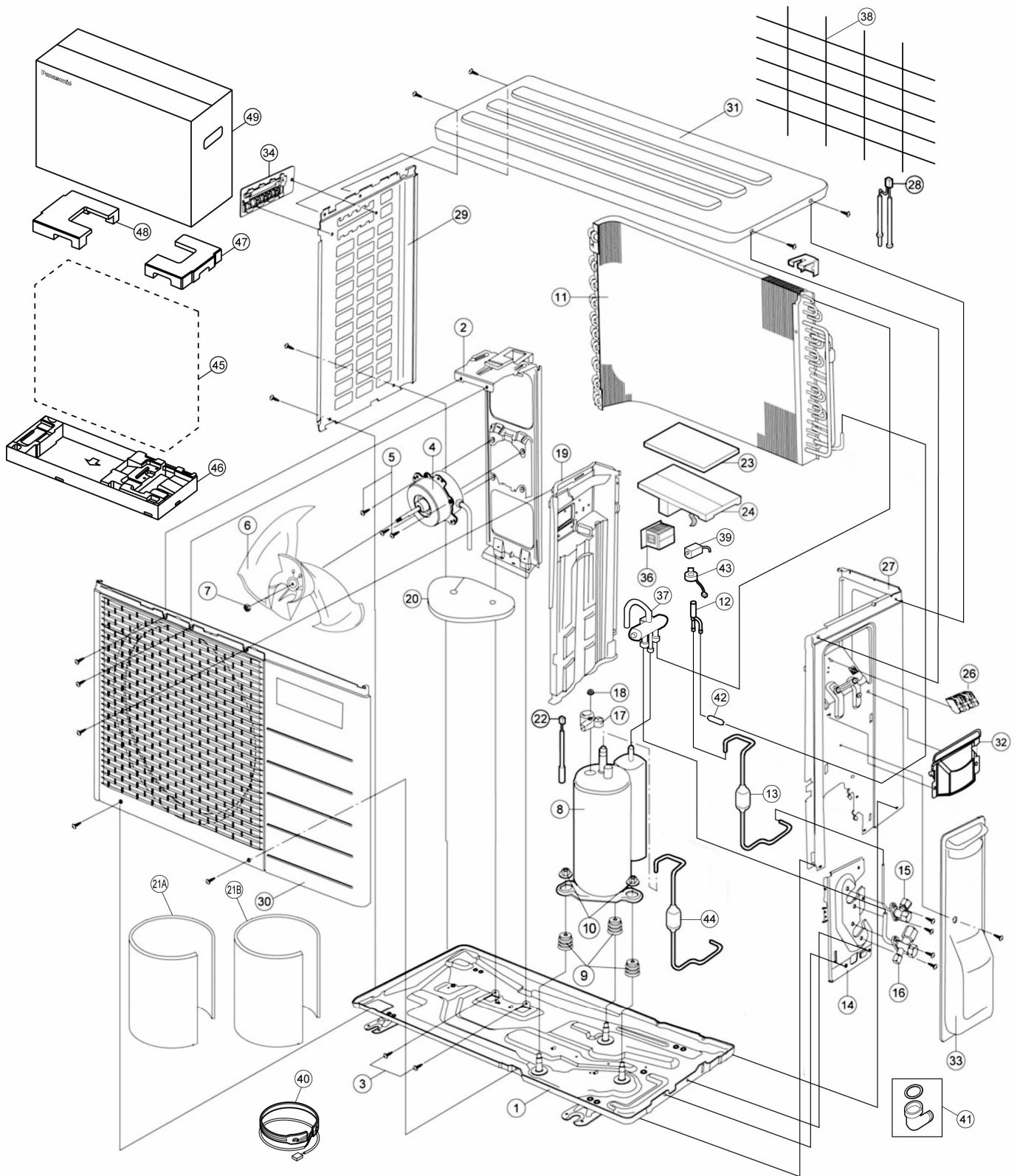


19.2 Outdoor Unit



Note

The above exploded view is for the purpose of parts disassembly and replacement.
The non-numbered parts are not kept as standard service parts.

REF. NO.	PART NAME & DESCRIPTION	QTY.	CU-E9NKUA	CU-E12NKUA	REMARK
1	CHASSIS ASSY	1	CWD50K2081A	←	
2	FAN MOTOR BRACKET	1	CWD541089	←	
3	SCREW - FAN MOTOR BRACKET	2	CWH551217	←	
4	FAN MOTOR	1	ARW6404AC	←	O
5	SCREW - FAN MOTOR MOUNT	4	CWH55252J	←	
6	PROPELLER FAN ASSY	1	CWH03K1014	←	
7	NUT - PROPELLER FAN	1	CWH56053J	←	
8	COMPRESSOR	1	5RS102XHA21	←	O
9	ANTI - VIBRATION BUSHING	3	CWH50077	←	
10	NUT - COMPRESSOR MOUNT	3	CWH56000J	←	
11	CONDENSER	1	CWB32C3394	←	
12	EXPANSION VALVE	1	CWB051016J	←	
13	DISCHARGE MUFFLER (EXP VALVE)	1	CWB121021	←	
14	HOLDER COUPLING	1	CWH351015A	←	
15	2-WAYS VALVE (LIQUID)	1	CWB021333	←	O
16	3-WAY VALVE (GAS)	1	CWB011374	CWB011367	O
17	TERMINAL COVER	1	CWH171039A	←	
18	NUT - TERMINAL COVER	1	CWH7080300J	←	
19	SOUND PROOF BOARD	1	CWH151172A	←	
20	SOUND PROOF MATERIAL	1	CWG302570	←	
21a	SOUND PROOF MATERIAL	1	CWG302292	←	
21b	SOUND PROOF MATERIAL	1	CWG302569	←	
22	SENSOR CO-COMP TEMP	1	CWA50C2340	←	O
23	CONTROL BOARD COVER-TOP	1	CWH131264	←	
24	ELECTRONIC CONTROLLER - MAIN	1	CWA73C6161R	CWA73C6162R	O
26	TERMINAL BOARD ASSY	1	CWA28K1154	←	O
27	CABINET SIDE PLATE CO.	1	CWE04C1226	←	
28	SENSOR CO-AIR TEMP AND PIPE TEMP	1	CWA50C2793	←	O
29	CABINET SIDE PLATE	1	CWE041492A	←	
30	CABINET FRONT PLATE CO.	1	CWE06C1142	←	
31	CABINET TOP PLATE	1	CWE031018A	←	
32	PLATE - C. B. COVER TERMINAL	1	CWH131301	←	
33	CONTROL BOARD COVER CO.	1	CWH13C1208	←	
34	HANDLE	1	CWE161010	←	
36	REACTOR	1	G0C193J00003	G0C193J00004	O
37	4-WAYS VALVE	1	CWB001058	←	O
38	WIRE NET	1	CWD041161A	←	
39	V-COIL COMPLETE	1	CWA43C2432	←	
40	CRANKCASE HEATER	1	CWA341065	←	
41	ACCESSORY CO.(DRAIN ELBOW)	1	CWG87C900	←	
42	STRAINER	1	CWB111061	←	
43	V-COIL COMPLETE (EXP. VALVE)	1	CWA43C2393	←	
44	DISCHARGE MUFFLER (4 W.VALVE)	1	CWB121047	←	
45	BAG	1	CWG861078	←	
46	BASE BOARD - COMPLETE	1	CWG50C2388	←	
47	SHOCK ABSORBER (R)	1	CWG712209	←	
48	SHOCK ABSORBER (L)	1	CWG712210	←	
49	C.C.CASE	1	CWG565107	←	

(Note)

- All parts are supplied from PHAAM, Malaysia (Vendor Code: 00029488).
- "O" marked parts are recommended to be kept in stock.