

# EASY ASSEMBLY AND OPERATION INSTRUCTIONS

Gargantuan Spider

Model#5124419



Please follow these step by step instructions to properly assemble and display your Gargantuan Spider.

## CARE AND STORAGE INSTRUCTIONS

For best performance operate your item indoors or in a sheltered outdoor area. We also recommend that you bring your item indoors during adverse weather (extreme cold, strong winds and/or rain). When not in use, store this product in it's original packing. Keep away from heat and moisture.

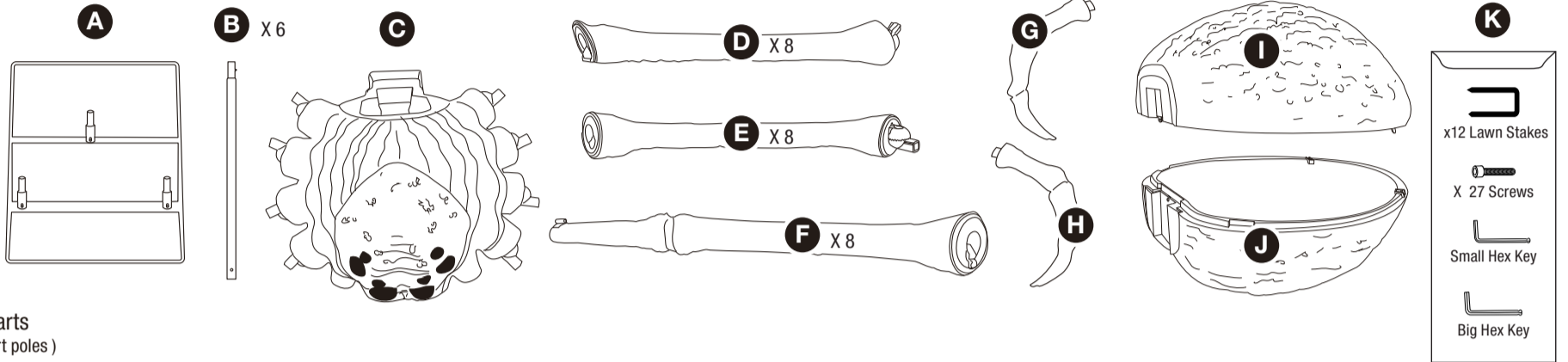
## WARNING

This item is not a toy and should be used for decoration only. This item contains small parts that can be a choking hazard. Keep all plastic and wire parts away from children. This product is intended for people ages 14 and up.

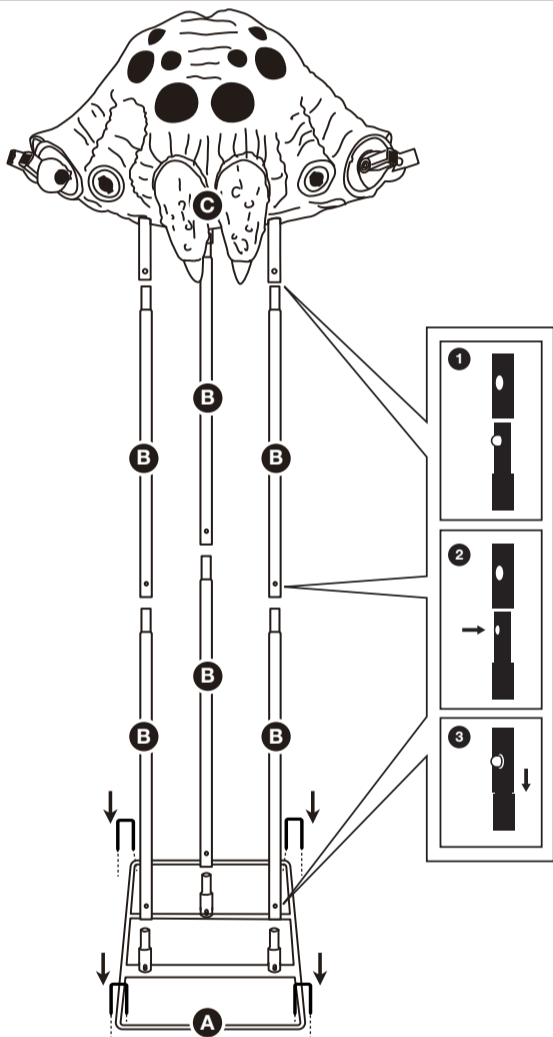
Please read all instructions carefully before assembling. Save this instruction sheet for future reference.

## PARTS LIST

- A. Base
- B. Support Poles x 6
- C. Head
- D. Upper Legs x 8
- E. Middle Legs x 8
- F. Lower Legs x 8
- G. Right Feeder Leg
- H. Left Feeder Leg
- I. Upper Abdomen
- J. Lower Abdomen
- K. Polybag with Small Parts  
(Attached to the B. Support poles)

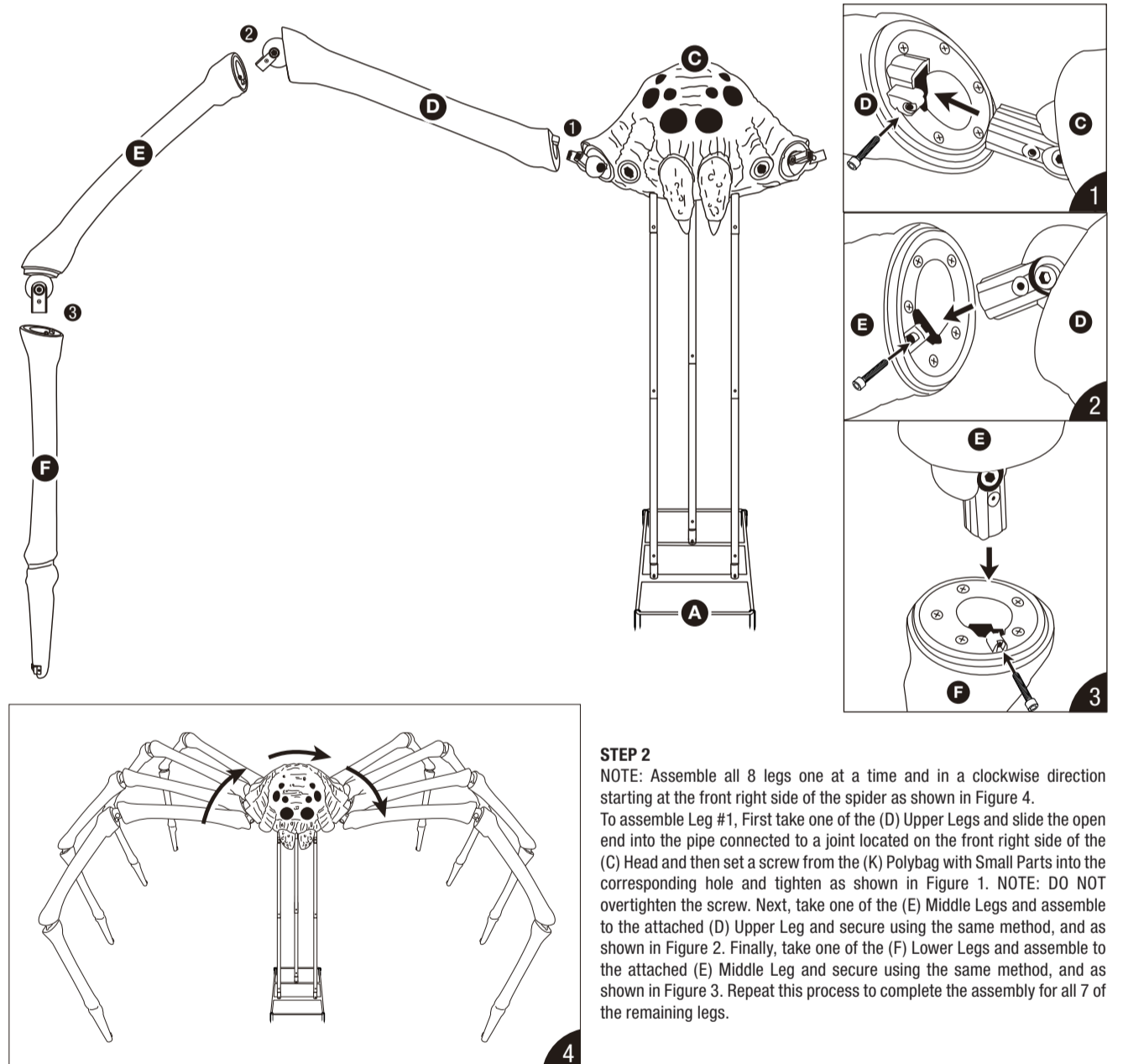


**BEFORE ASSEMBLING, REMOVE ALL THE ABOVE PARTS FROM BOX. IF ANY PART IS MISSING, DO NOT ATTEMPT TO ASSEMBLE THE PRODUCT AND CONTACT CUSTOMER SERVICE FROM 8:30AM TO 5:30PM PST AT 1-855-428-3921.**



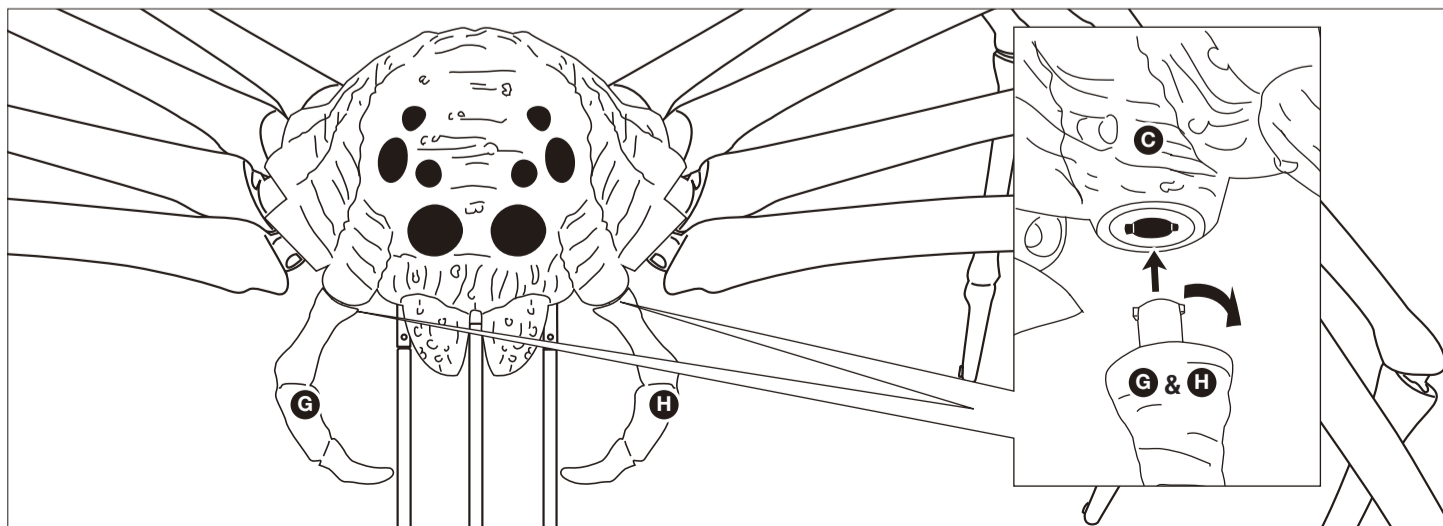
### STEP 1

First, To secure the Spider Base into the ground, take the lawn stakes from the (K) Polybag with Small Parts and push the stake into the ground with one side going through each corner of the (A) Base as shown. Assemble the (B) Support Poles x6 to one another to construct 3 sets of 2-pole support sections. Next, attach these 2-pole support sections into the corresponding support posts located on the (A) Base. Finally, attach the (C) Head by sliding the support posts exposed at the base down onto the tops of these 2-pole support sections. NOTE: Secure all support poles and posts by aligning the quick-connect buttons into the pre-drilled holes as shown.



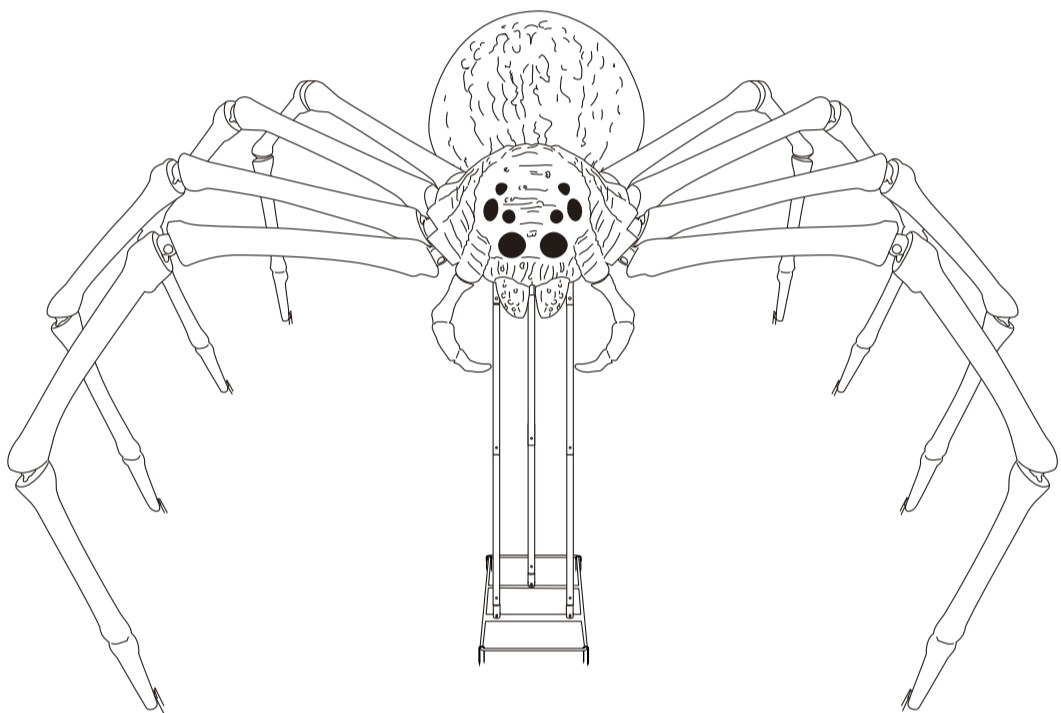
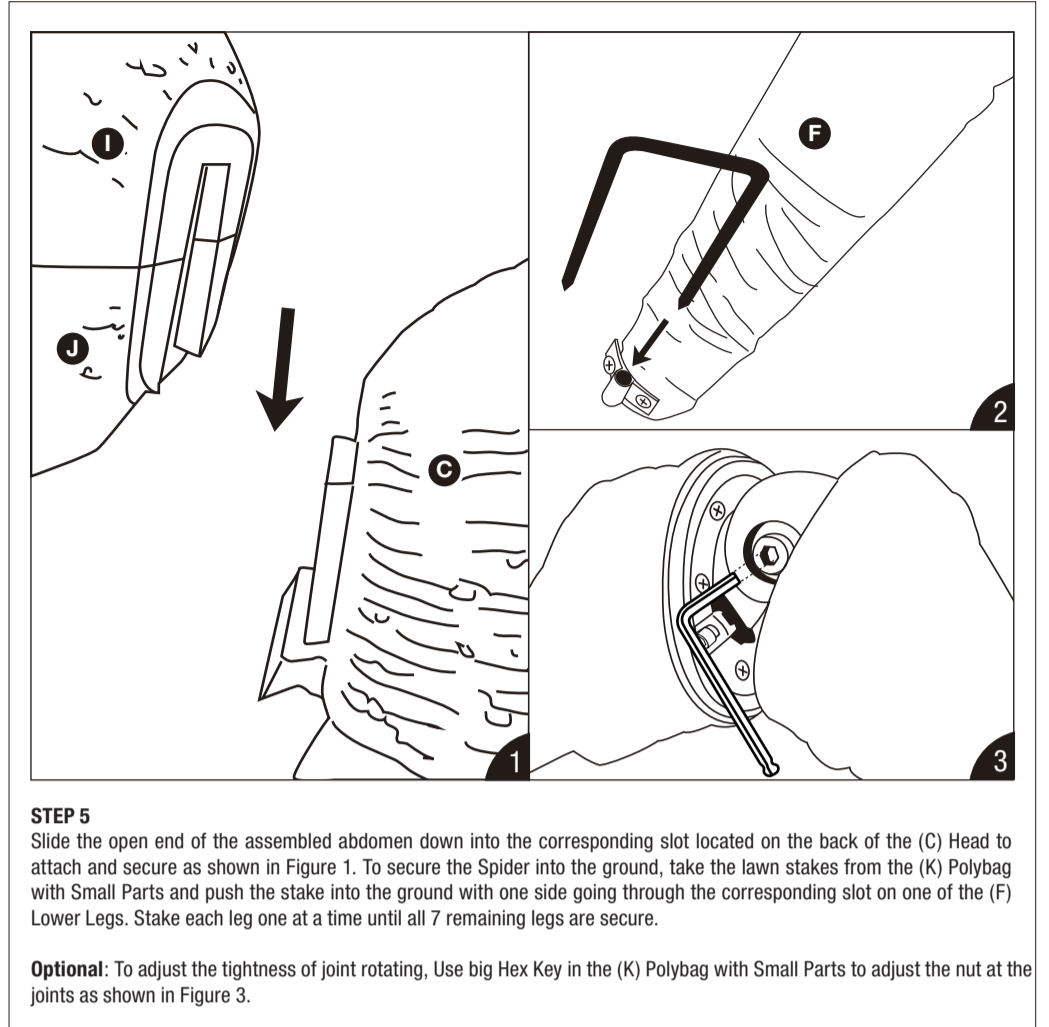
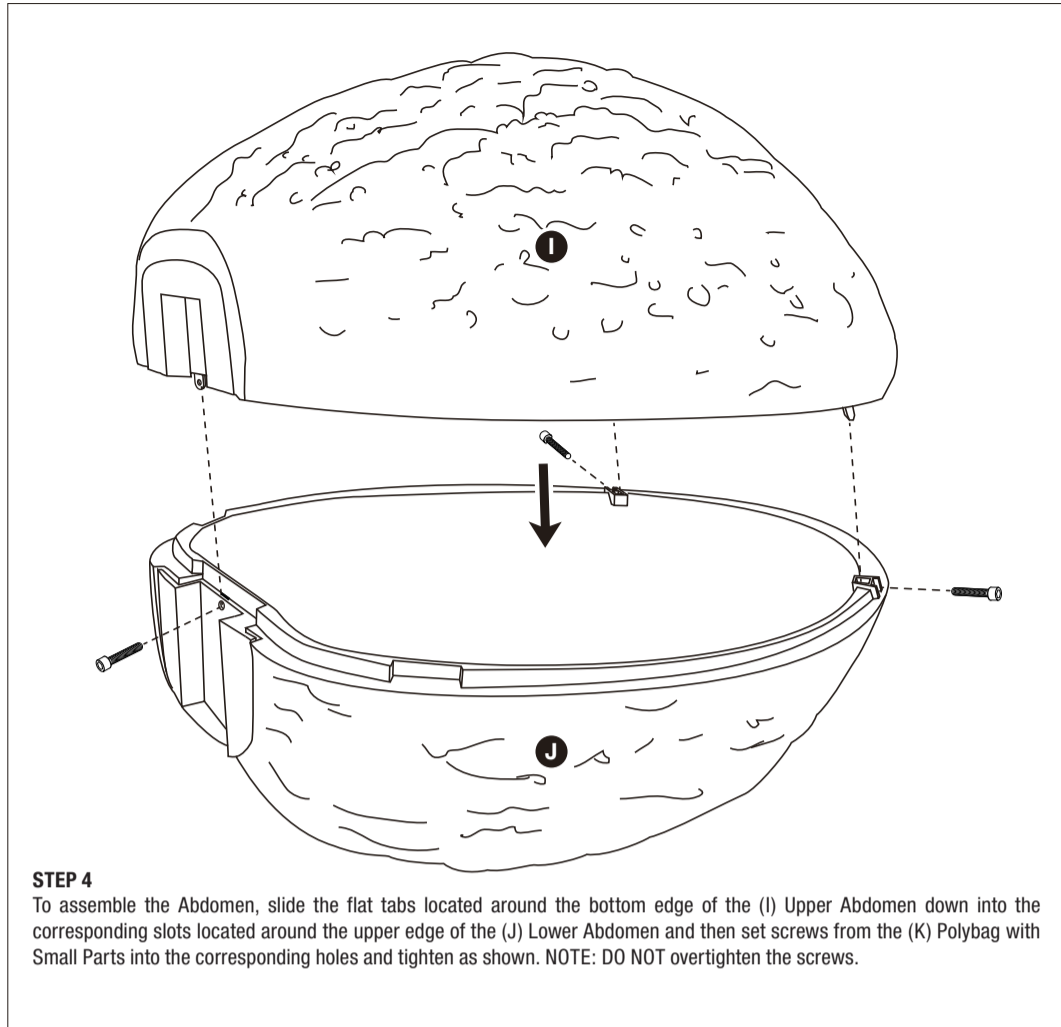
### STEP 2

NOTE: Assemble all 8 legs one at a time and in a clockwise direction starting at the front right side of the spider as shown in Figure 4. To assemble Leg #1, First take one of the (D) Upper Legs and slide the open end into the pipe connected to a joint located on the front right side of the (C) Head and then set a screw from the (K) Polybag with Small Parts into the corresponding hole and tighten as shown in Figure 1. NOTE: DO NOT overtighten the screw. Next, take one of the (E) Middle Legs and assemble to the attached (D) Upper Leg and secure using the same method, and as shown in Figure 2. Finally, take one of the (F) Lower Legs and assemble to the attached (E) Middle Leg and secure using the same method, and as shown in Figure 3. Repeat this process to complete the assembly for all 7 of the remaining legs.



### STEP 3

Insert the (G) Right Feeder Leg & (H) Left Feeder Leg into the holes located at the front of the (C) Head and twist clockwise as shown.



## OPERATION INSTRUCTIONS

**Sensor:** This switch mode will activate lights and sound when the Infra-red (IR) sensor is activated and will operate for 1 audio-cycle with each activation. The Infra-red (IR) sensor has a range of up to 2 m/6.5 ft. and will activate when someone comes within an 80-degree angle from left-to-right, as well as from above and below.

○ : This setting will turn off lights and sound.

I : This switch mode will continually operate the lights and sound of the item.

⊕ ⊖ : Raise or lower the volume using the volume control turn dial, turn and click all the way down to turn the volume off.

## For Indoor Use

### BATTERY REPLACEMENT INSTRUCTIONS

**Requires 3 x 1.5V AA batteries (Included)**

\* You will need a small screwdriver (Not Included).

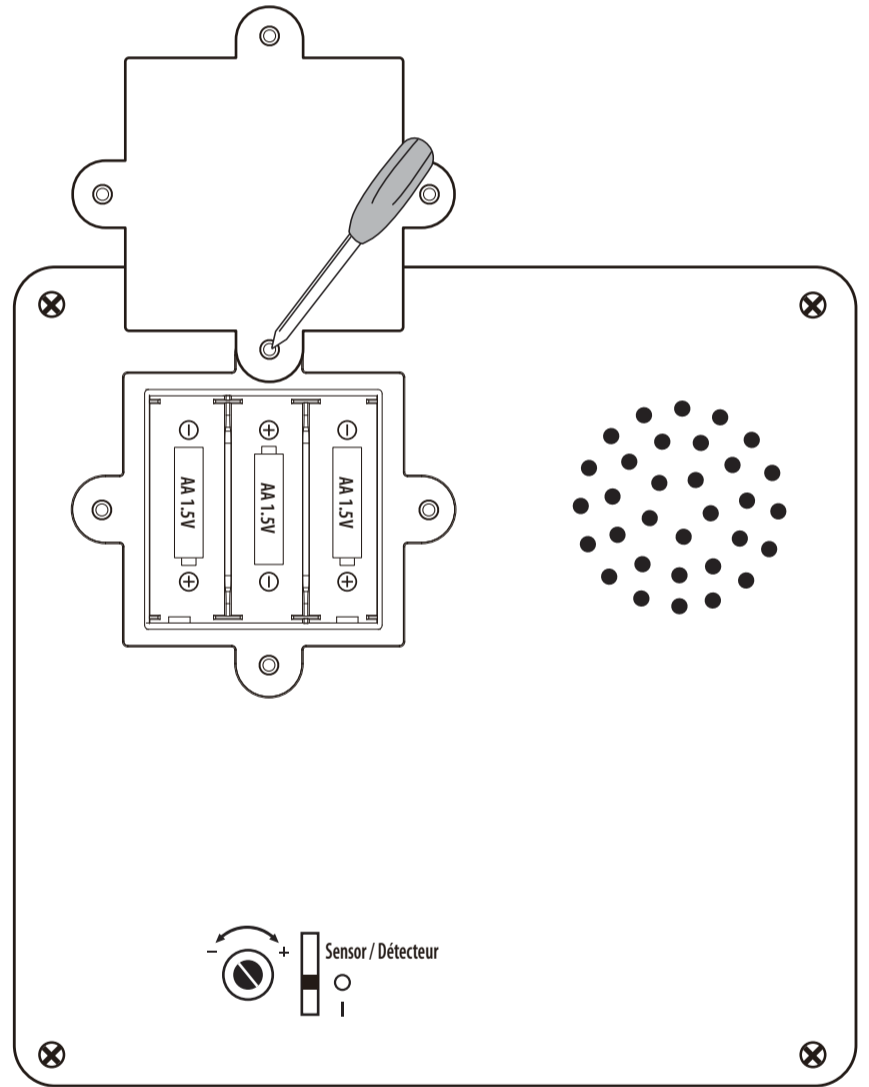
Locate the battery compartment on the product. Remove the battery compartment cover by using a small Phillips head screwdriver to unscrew the screw. After removing or installing the batteries, place the battery compartment cover into position, and secure the battery cover. DO NOT overtighten screws.

Do not mix alkaline, standard (carbon-zinc), or rechargeable (nickel cadmium) batteries. Do not mix old and new batteries. Rechargeable batteries to be removed from the product before being charged. Only batteries of the same or equivalent type as recommended are to be used. Rechargeable batteries are only to be charged under adult supervision. Non-rechargeable batteries are not to be recharged. Batteries are to be inserted with the correct polarity. Remove batteries if consumed or if product is to be left unused for a long time. The supply terminals are not to be short-circuited. Dispose of batteries safely. DO NOT DISPOSE OF BATTERIES IN FIRE, BATTERIES MAY EXPLODE OR LEAK

**CAUTION:** Changes or modifications not expressly approved by the party responsible for compliance could void the user's authority to operate the equipment.

**NOTE:** This equipment has been tested and found to comply with the limits for a Class B digital device, pursuant to Part 15 of the FCC Rules. These limits are designed to provide reasonable protection against harmful interference in a residential installation. This equipment generates, uses and can radiate radio frequency energy and, if not installed and used in accordance with the instructions, may cause harmful interference to radio communications. However, there is no guarantee that interference will not occur in a particular installation. If this equipment does cause harmful interference to radio or television reception, which can be determined by turning the equipment off and on, the user is encouraged to try to correct the interference by one or more of the following measures: Reorient or relocate the receiving antenna, Increase the separation between the equipment and receiver, Connect the equipment into an outlet on a circuit different from that to which the receiver is connected. Consult the dealer or experienced radio/TV technician for help.

**CAN ICES-3 (B)/NMB-3 (B)**



Battery Box located under the head of the spider