

WISS®

PRECISION.
PERFORMANCE.
DURABILITY.

Snips & HVAC Tools



Wiss HVAC Tools. Built on a tradition of superior durability and performance.

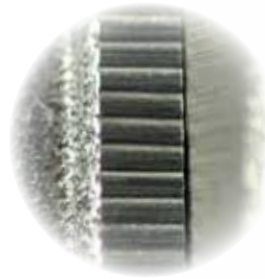
Wiss has been the leading brand in aviation snips for over 50 years. It is driven from two simple principles: durability and performance. Wiss tools last longer and cut better. That's why sheet metal fabricators and HVAC professionals choose Wiss snips more than all other brands combined.

Wiss puts those same qualities into every product in its line of HVAC tools. So whether you're using Wiss snips or HVAC tools, you can count on getting exceptional life, performance, and value.

The Wiss Difference Why Wiss aviation snips are better ...

The Blades

Wide, precision-cut serrations on both top and bottom blades provide better grip on material being cut and reduce the force required to cut. These aggressive blade serrations spread cutting force across the blades, which extends blade life and prevents snips from binding while cutting.



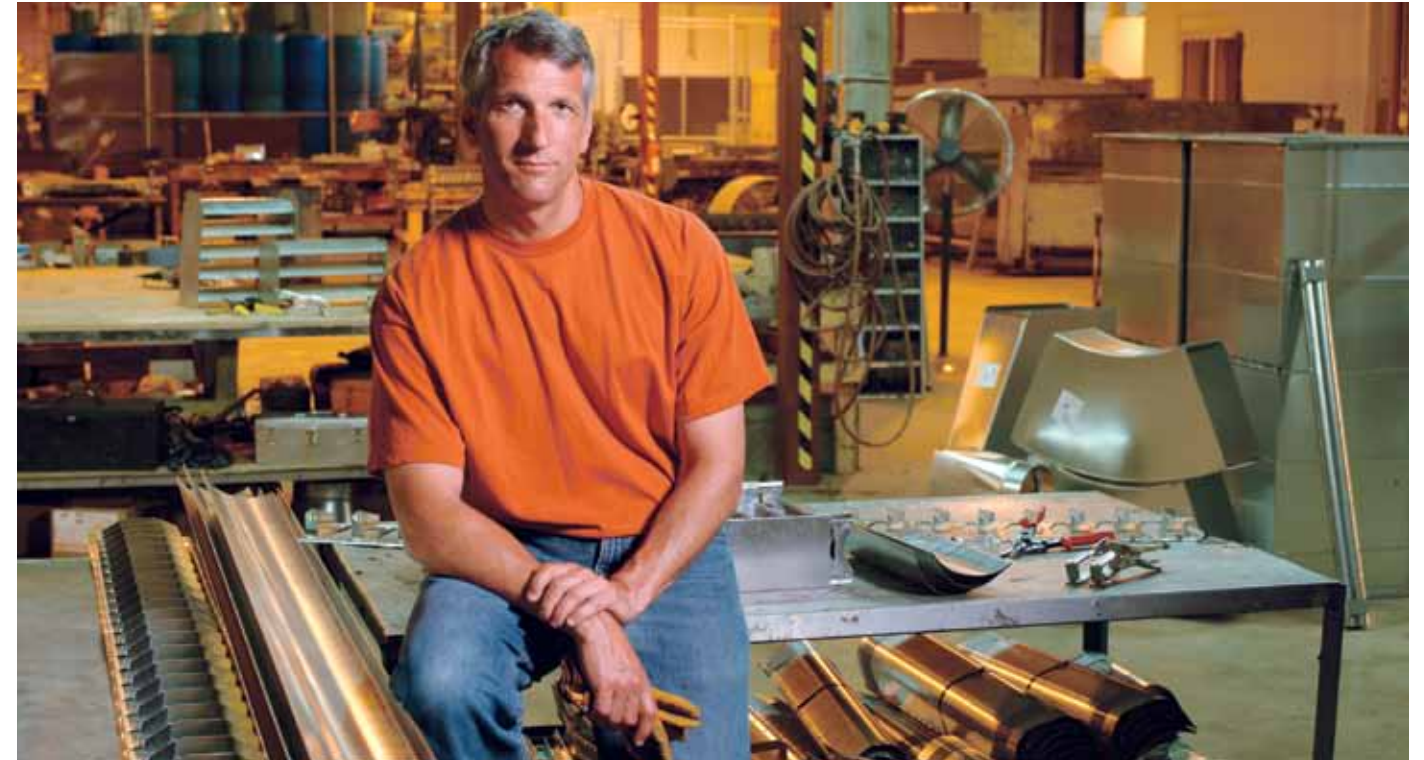
The Pivot

The pivot bolt on other snips is threaded and locked into one of the blades, causing wear to be focused on one section of the bolt, eventually leading to failure. All Wiss snips feature a smooth "free-floating" bolt design that allows the force and resulting wear to be evenly distributed over the entire bolt, increasing its service life.



The Spring

At the heart of all Wiss aviation snips is a fatigue-resistant, extra long-life return spring. The top-grade steel used for the springs in Wiss snips provides trouble-free cutting and superior durability.



Cutting Tools

Of all the reasons Wiss® aviation and tinner snips are the industry standard, it really comes down to two words: durability and performance. Wiss snips have a proven record for long service life that's unmatched, along with unparalleled cutting ability. That's why the pros who depend on their snips count on Wiss.

Forming Tools

Wiss forming tools have been redesigned and reinvented for the pro. Wiss seamers and crimpers now feature greater bending and crimping power, along with comfortable Wiss aviation snip style handle grips. Also, Wiss has added three sizes of folding tools made of sturdy 16-gauge steel.

Specialty Tools

Two new specialty tools have been added to the Wiss HVAC line ... a cable tie tensioning tool that ensures flex duct is tightened securely to take-off collars and ratcheting pipe cutters that make it easy to cut pipe in hard-to-reach or confined spaces.

High quality tools for HVAC professionals



HVAC Cutting Tools. A complete line professionals count on every day.

PROFESSIONALS' CHOICE
#1

M1R Snip



M2R Snip



M3R Snip



M4R Pipe & Duct Snip



M4R Pipe & Duct Snip
• For metal pipe and duct
• Double-cut design curls 11/64" strip of metal safely away, leaving two clean, straight edges

M6R Offset Snip



M7R Offset Snip
Offset design keeps hands clear of metal and guides cut edge smoothly around blade.

Aviation Snips

The most popular professional snips in the world, Wiss aviation snips multiply hand force 5X. CNC-serrated blades hold and aggressively cut material, while the self-opening spring action delivers a smooth, low-effort feed and non-slip cushion grips provide superior control. Tough molybdenum steel blades have exceptional durability and long-lasting blade life. Cuts up to 18-gauge carbon steel.

M5R Bulldog Snip

For heavy stock up to 16-gauge carbon steel.



M8R Vertical Snip



M9R Vertical Snip

Right-angle blade allows greater reach in overhead and other awkward applications.



Lightweight Aluminum Handle Snips

These snips offer greater cutting leverage, more comfort, and half the weight of similar forged snips. They're ideal for long cuts in sheet metal or aluminum, or for cutting materials like vinyl siding, metal flashing, and gutters. Large, wide handle rings increase cutting leverage and fit large or small hands, with or without gloves, while a sleek head design reduces effort by allowing cut material to move smoothly past the blades.

W12L 12" Lightweight Aluminum Handle Snip has a slim nose ideal for making cuts in tight places and for reaching corners.



W14L 14" Lightweight Aluminum Handle Snip has a more rounded nose for added leverage when cutting heavier materials.

NEW



Large, wide handle rings improve comfort and cutting leverage

Bulldog Tinner Snip

The Wiss Bulldog tinner snip offers maximum cutting power when cutting heavy stock materials. Blades are hot drop-forged and precision ground to ensure longer life and consistent cutting performance. Large, wide handle rings increase cutting leverage and comfort.



W5N Bulldog Tinner Snip

Hand Notcher

The Wiss hand notcher makes quick, clean, 30° V-shaped notches in sheet metal or aluminum. It's ideal for making notches in take-off tabs and corners. It features improved comfort through new Wiss aviation snip style handle grips, and a comfortable operating range that reduces fatigue.



W11 Hand Notcher

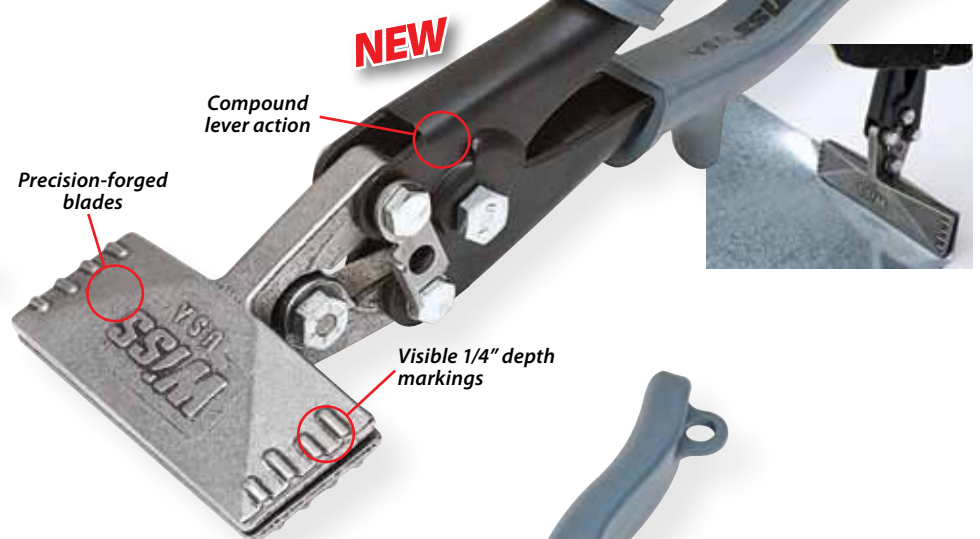
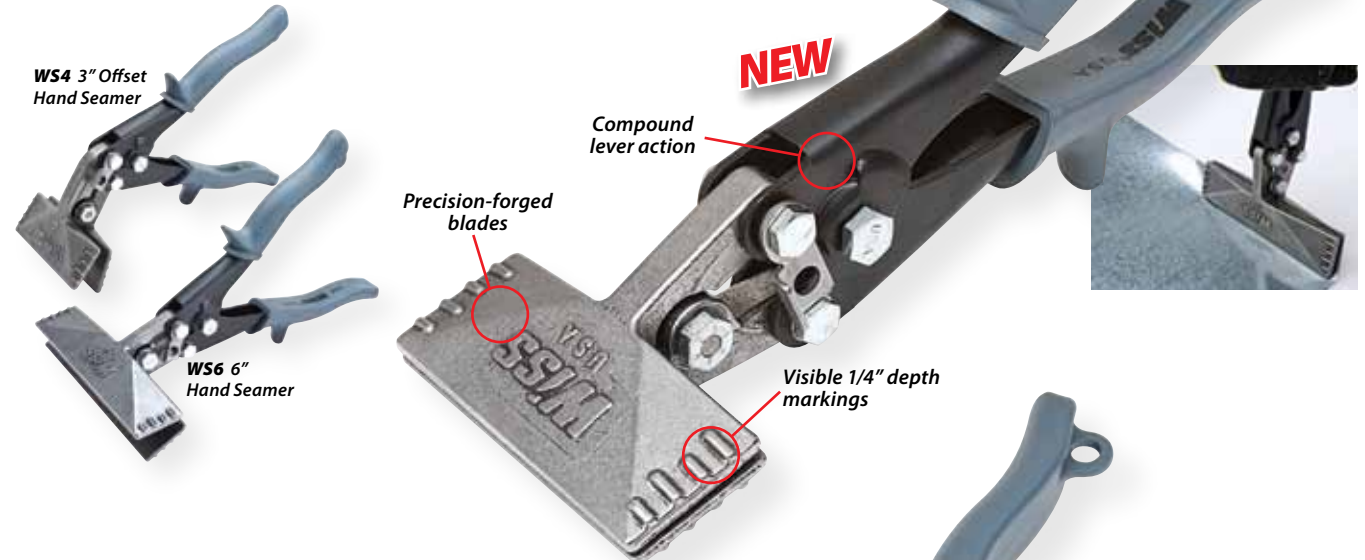
NEW



HVAC Forming & Specialty Tools . . . Tools to get the job done right.

Hand Seamers

Wiss hand seamers offer exceptional power for bending and flattening sheet metal. Highly visible 1/4" depth markings and durable forged blades give accurate bends. Wiss aviation snips style handle grips improve comfort. Handle span is in optimum grip range when fully closed, maximizing hand strength for more bending power.



Hand Crimpers

Wiss crimpers are commonly used to form male fitting ends on round metal pipe, guttering, and downspouts. Wiss crimpers make long, shallow crimps that produce tight-fitting connections, while not concaving pipe or obstructing airflow. Wiss aviation snip style handle grips and an easy operating range give exceptional comfort and reduce hand fatigue.



Folding Tools

Wiss folding tools are ideal for making long, uniform bends in sheet metal or folding channels in ductwork. Each tool has a 3/8" deep and a 1" deep folding channel. Strong 16-gauge steel construction prevents channel deformation and maintains bending accuracy. Each folding channel has two sight holes that help ensure proper depth alignment. Available in 12", 18", and 24" lengths.



Cable Tie Tensioning Tool

The Wiss cable tie tensioning tool firmly tightens nylon cable ties when securing flex duct to take-off collars. It offers easy one-hand operation and a cut-off lever that trims excess strap. This tool works on both light and heavy-duty cable ties, up to 175-pound tensile strength.



Ratchet Pipe Cutters

Wiss ratcheting pipe cutters are designed to work in tight spaces where traditional cutting tools will not fit. While the cutting wheel rotates around the pipe, the handle ratchet only needs to move as little as 10 degrees. Ideal for cutting brass, copper, aluminum, and other thin-walled conduit material. Spare cutting wheel stored in handle of medium and large versions.



WRPCMD Ratchet Pipe Cutter, cuts 1/4" to 7/8" diameter
WRPCSM Ratchet Pipe Cutter, cuts 1/8" to 1/2" diameter (not shown)
WRPCLG Ratchet Pipe Cutter, cuts 5/16" to 1 1/8" diameter (not shown)



Wiss HVAC Tools & Snips



Cutting Tools

Catalog No.	Description
Snips	
M1R	Aviation Snip, Left Cut
M2R	Aviation Snip, Right Cut
M3R	Aviation Snip, Straight Cut
Pipe & Duct Cutting Snip	
M4R	Pipe and Duct Snip
Bulldog Aviation Snip	
M5R	Bulldog Aviation Snip
Offset Aviation Snips	
M6R	Offset Aviation Snip, Left Cut
M7R	Offset Aviation Snip, Right Cut
Vertical Aviation Snips	
M8R	Vertical Aviation Snip, Left Cut
M9R	Vertical Aviation Snip, Right Cut
Solid Steel Tinner Snip	
W5N	Bulldog Tinner Snip
Lightweight Aluminum Snips	
W12L	12" Lightweight Aluminum Handle Snip
W14L	14" Lightweight Aluminum Handle Snip

Forming Tools

Catalog No.	Description
Hand Seamers	
WS3	3" Hand Seamer, Straight Handle
WS4	3" Hand Seamer, Offset Handle
WS6	6" Hand Seamer, Straight Handle
Hand Crimpers	
WC3S	3-Blade Crimper, 1-1/4" depth
WC5S	5-Blade Crimper, 1-1/4" depth
WC5L	5-Blade Crimper, 1-5/8" depth
Hand Notchers	
WHN1	Hand Notcher
Folding Tools	
WF12	12" Folding Tool
WF18	18" Folding Tool
WF24	24" Folding Tool

Specialty Tools

Catalog No.	Description
Cable Tie Tensioning Tools	
WT1	Cable Tie Tensioning Tool
Ratcheting Pipe Cutters	
WRPCSM	Small Ratcheting Pipe Cutter, 1/8" to 1/2" diameter pipe
WRPCMD	Medium Ratcheting Pipe Cutter, 1/4" to 7/8" diameter pipe
WRPCLG	Large Ratcheting Pipe Cutter, 5/16" to 1 1/8" diameter pipe

• Indicates a new product.



Apex Tool Group, LLC
 14600 York Road, Suite A
 Sparks, Maryland 21152
www.apextoolgroup.com

ATG-277/WW/15M/Printed 04/11/USA Apex No. T550820
 © 2011, Apex Tool Group, LLC
 Specifications subject to change without notice.