

**GLS-3HDT  
3 STEP  
PRO GRADE  
STEEL  
WITH TRAY**



EXCLUSIVELY AT



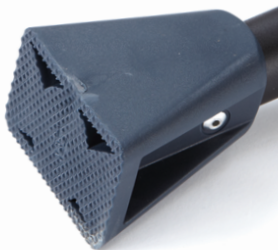
**COMPLETE PROJECTS EASILY**

*The 3 Step Pro Grade Steel with tray is extremely tough, dependable, and can be opened and closed with one hand. The project tray is perfect for hardware or tools. With a slim fold solid steel frame measured at 3 in. deep, the 3 Step Pro Grade Steel with tray is the perfect project companion to keep projects moving on the fast track to completion.*



**BIGGER IS BETTER**

*Giant top platform and extra large steps provide the ultimate comfort when standing for long periods of time*



**SAFETY**

*Non-slip tread and oversized non-marring feet improve stability*

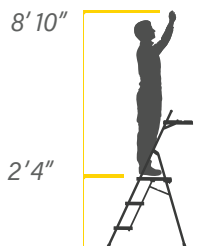
**SECURITY**

*Safety latch keeps platform in place*



**SPECIFICATIONS**

- Duty Rating:* 250lbs ANSI Type I
- Open Dimensions:* 35"L x 19.3"W x 55.5"H
- Folded Dimensions:* 3"L x 19.3"W x 61.5"H
- Top Platform:* 14.5" x 13.25"
- Weight:* 17lbs
- Store SKU:* 1001382936



**GORILLALADDERS.com**