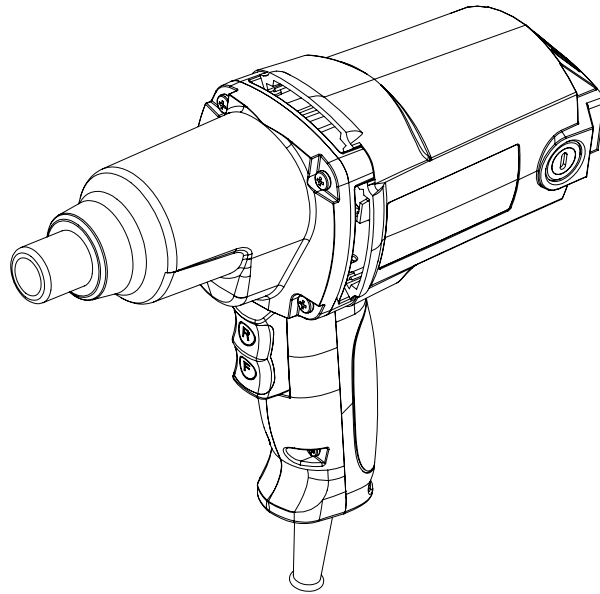




ELECTRIC IMPACT WRENCH



For replacement parts visit
WENPRODUCTS.COM

Model # 48107
bit.ly/wenvideo

IMPORTANT:

Your new tool has been engineered and manufactured to WEN's highest standards for dependability, ease of operation, and operator safety. When properly cared for, this product will supply you years of rugged, trouble-free performance. Pay close attention to the rules for safe operation, warnings, and cautions. If you use your tool properly and for its intended purpose, you will enjoy years of safe, reliable service.



NEED HELP? CONTACT US!

Have product questions? Need technical support?
Please feel free to contact us at:

 **800-232-1195** (M-F 8AM-5PM CST)

 **techsupport@wenproducts.com**

 **WENPRODUCTS.COM**

NOTICE: Please refer to wenproducts.com for the most up-to-date instruction manual.

TABLE OF CONTENTS

Product Specifications	2
Safety Introduction	3
General Safety Rules	4
Impact Wrench Safety Rules	6
Electrical Information	7
Know Your Impact Wrench	8
Operation	9
Maintenance	10
Troubleshooting	11
Exploded View & Parts List	12
Warranty Statement	13

PRODUCT SPECIFICATIONS

Model Number:	48107
Motor:	AC 120V, 60 Hz, 7.5A, 2100 RPM
Impact Frequency:	2700 impacts per minute
Maximum Torque:	230 ft. lbs
Drive Size:	1/2 in.
Product Dimensions:	11.8 x 4 x 9.6 in.
Product Weight:	6.9 lbs

SAFETY INTRODUCTION

Thanks for purchasing the WEN Impact Wrench. We know you are excited to put your tool to work, but first, please take a moment to read through the manual. This manual provides information regarding potential safety concerns, as well as helpful assembly and operating instructions. Safe operation of this tool requires that you read and understand this operator's manual and all labels affixed to the tool.



SAFETY ALERT SYMBOL: Indicates danger, warning, or caution. The safety symbols and the explanations with them deserve your careful attention and understanding. Always follow the safety precautions to reduce the risk of fire, electric shock and personal injury. However, please note that these instructions and warnings are not substitutes for proper accident prevention measures.

NOTE: The following safety information is not meant to cover all possible conditions and situations that may occur. WEN reserves the right to change this product and specifications at any time without prior notice.

Keep this manual available to all users during the entire life of the tool and review it frequently to maximize safety for both yourself and others.

GENERAL SAFETY RULES



Read all safety warnings and all instructions. Failure to follow the warnings and instructions may result in electric shock, fire and serious injury. **Save all warnings and instructions for future reference.** The term “power tool” in the warnings refers to your mains-operated (corded) power tool.

WORK AREA SAFETY

- a) Keep work area clean and well lit. Cluttered or dark areas invite accidents.
- b) Do not operate power tools in explosive atmospheres, such as in the presence of flammable liquids, gases or dust. Power tools create sparks which may ignite the dust or fumes.
- c) Keep children and bystanders away while operating a power tool. Distractions can cause you to lose control.

ELECTRICAL SAFETY

- a) Power tool plugs must match the outlet. Never modify the plug in any way. Do not use any adapter plugs with earthed (grounded) power tools. Unmodified plugs and matching outlets will reduce risk of electric shock.
- b) Avoid body contact with earthed or grounded surfaces such as pipes, radiators, ranges and refrigerators. There is an increased risk of electric shock if your body is earthed or grounded.
- c) Do not expose power tools to rain or wet conditions. Water entering a power tool will increase the risk of electric shock.
- d) Do not abuse the cord. Never use the cord for carrying, pulling or unplugging the power tool. Keep cord away from heat, oil, sharp edges or moving parts. Damaged or entangled cords increase the risk of electric shock.
- e) When operating a power tool outdoors, use an extension cord suitable for outdoor use. Use of a cord suitable for outdoor use reduces the risk of electric shock.
- f) If operating a power tool in a damp location is unavoidable, use a ground fault circuit interrupter (GFCI) protected supply. Use of a GFCI reduces the risk of electric shock.

PERSONAL SAFETY

- a) Stay alert, watch what you are doing and use common sense when operating a power tool. Do not use a power tool while you are tired or under the influence of drugs, alcohol or medication. A moment of inattention while operating power tools may result in serious personal injury.
- b) Use personal protective equipment. Always wear eye protection. Protective equipment such as dust mask, non-skid safety shoes, hard hat, or hearing protection used for appropriate conditions will reduce personal injuries.
- c) Prevent unintentional starting. Ensure the switch is in the off-position before connecting to power source and/or battery pack, picking up or carrying the tool. Carrying power tools with your finger on the switch or energising power tools that have the switch on invites accidents.
- d) Remove any adjusting key or wrench before turning the power tool on. A wrench or a key left attached to a rotating part of the power tool may result in personal injury.
- e) Do not overreach. Keep proper footing and balance at all times. This enables better control of the power tool in unexpected situations.

GENERAL SAFETY RULES

- f) Dress properly. Do not wear loose clothing or jewelry. Keep your hair, clothing and gloves away from moving parts. Loose clothes, jewelry or long hair can be caught in moving parts.
- g) If devices are provided for the connection of dust extraction and collection facilities, ensure these are connected and properly used. Use of dust collection can reduce dust-related hazards.
- h) Always wear eye protection.

POWER TOOL USE AND CARE

- a) Do not force the power tool. Use the correct power tool for your application. The correct power tool will do the job better and safer at the rate for which it was designed.
- b) Do not use the power tool if the switch does not turn it on and off. Any power tool that cannot be controlled with the switch is dangerous and must be repaired.
- c) Disconnect the plug from the power source and/or the battery pack from the power tool before making any adjustments, changing accessories, or storing power tools. Such preventive safety measures reduce the risk of starting the power tool accidentally.
- d) Store idle power tools out of the reach of children and do not allow persons unfamiliar with the power tool or these instructions to operate the power tool. Power tools are dangerous in the hands of untrained users.
- e) Maintain power tools. Check for misalignment or binding of moving parts, breakage of parts and any other condition that may affect the power tool's operation. If damaged, have the power tool repaired before use. Many accidents are caused by poorly maintained power tools.
- f) Keep cutting tools sharp and clean. Properly maintained cutting tools with sharp cutting edges are less likely to bind and are easier to control.
- g) Use the power tool, accessories and tool bits etc. in accordance with these instructions, taking into account the working conditions and the work to be performed. Use of the power tool for operations different from those intended could result in a hazardous situation.

SERVICE

- a) Have your power tool serviced by a qualified repair person using only identical replacement parts. This will ensure that the safety of the power tool is maintained.

CALIFORNIA PROPOSITION 65 WARNING

This product and some dust created by power sanding, sawing, grinding, drilling, and other construction activities may contain chemicals, including lead, known to the State of California to cause cancer, birth defects, or other reproductive harm. Wash hands after handling. Some examples of these chemicals are:

- Lead from lead-based paints.
- Crystalline silica from bricks, cement, and other masonry products.
- Arsenic and chromium from chemically treated lumber.

Your risk from these exposures varies depending on how often you do this type of work. To reduce your exposure to these chemicals, work in a well-ventilated area with approved safety equipment such as dust masks specially designed to filter out microscopic particles.

IMPACT WRENCH SAFETY RULES



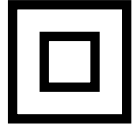
WARNING: Do not let comfort or familiarity with the product replace strict adherence to product safety rules. Failure to follow the safety instructions may result in serious personal injury.

1. **WORK ENVIRONMENT.** Do not operate the tool in wet or damp conditions; doing so significantly increases the risk of electrical shock. Do not operate the tool in the presence of flammable liquids or gases.
2. **PERSONAL SAFETY.** Always wear ANSI Z87.1-approved glasses, hearing protection and dust mask when using the wrench. Tie back long hair. Do not wear loose clothing or jewelry as they might get drawn in by the tool.
3. **PREVENTING ELECTRIC SHOCK.** Only hold the tool by insulated gripping surfaces when performing an operation in case the drive contacts hidden wiring or its own cord. Contacting a “live” wire may make exposed metal parts of the tool “live” and could give the operator an electric shock. Make sure to keep the drive bit away from any power cables, extension cords or wiring during operation.
4. **TOOL INSPECTION.** Before operation, check the tool for any damage or missing parts. Do not use the tool if any part is missing or damaged. Make sure all adjustments are correct and all connections are tight.
5. **STANDING POSITION.** Always be sure you have a firm footing. When operating the tool from an elevated position, be aware of people or things beneath you.
6. **SECURING THE WORKPIECE.** Secure loose workpieces using vises or clamps to prevent wobble, damage to the workpiece, and personal injury.
7. **DURING OPERATION.** To prevent injury, use both hands to operate the impact wrench, placing one hand on the handle and the other hand on the front housing. Keep your hands, hair and other beloved body parts away from the rotating components of the tool.
8. **TURNING OFF THE TOOL.** Turn off the tool, and unplug it from its electrical outlet before leaving. Do not lay the tool down until it has come to a complete stop. Do not touch the bit or the workpiece immediately after operation. They may be extremely hot and could burn your skin.
9. **MAKING ADJUSTMENTS.** Always turn off and unplug the impact wrench before making adjustments or changing attachments. Accidental start-ups may occur if the tool is plugged in during adjustment or maintenance.
10. **HOLD POWER TOOL BY INSULATED GRIPPING SURFACES,** when performing an operation where the fastener may contact hidden wiring or its own cord. Fasteners contacting a “live” wire may make exposed metal parts of the power tool “live” and could give the operator an electric shock.

ELECTRICAL INFORMATION

DOUBLE-INSULATED TOOLS

Your impact wrench electrical system is double insulated where two systems of insulation are provided. This eliminates the need for the usual three-wire grounded power cord. Double insulated tools do not need to be grounded, nor should a means for grounding be added to the product. All exposed metal parts are isolated from the internal metal motor components with protecting insulation.



IMPORTANT: Servicing a double-insulated product requires extreme care and knowledge of the system, and should be done only by a qualified service personnel using identical replacement parts. Always use original factory replacement parts when servicing.

- 1. POLARIZED PLUGS.** To reduce the risk of electric shock, this equipment has a polarized plug (one blade is wider than the other). This plug will fit in a polarized outlet only one way. If the plug does not fit fully in the outlet, reverse the plug. If it still does not fit, contact a qualified electrician to install a proper outlet. **DO NOT** modify the machine plug or the extension cord in any way.
- 2. GROUND FAULT CIRCUIT INTERRUPTER PROTECTION (GFCI)** should be provided on the circuit or outlet used for this power tool to reduce the risk of electric shock.
- 3. SERVICE AND REPAIR.** To avoid danger, electrical appliances must only be repaired by qualified service technician using original replacement parts.

GUIDELINES AND RECOMMENDATIONS FOR EXTENSION CORDS

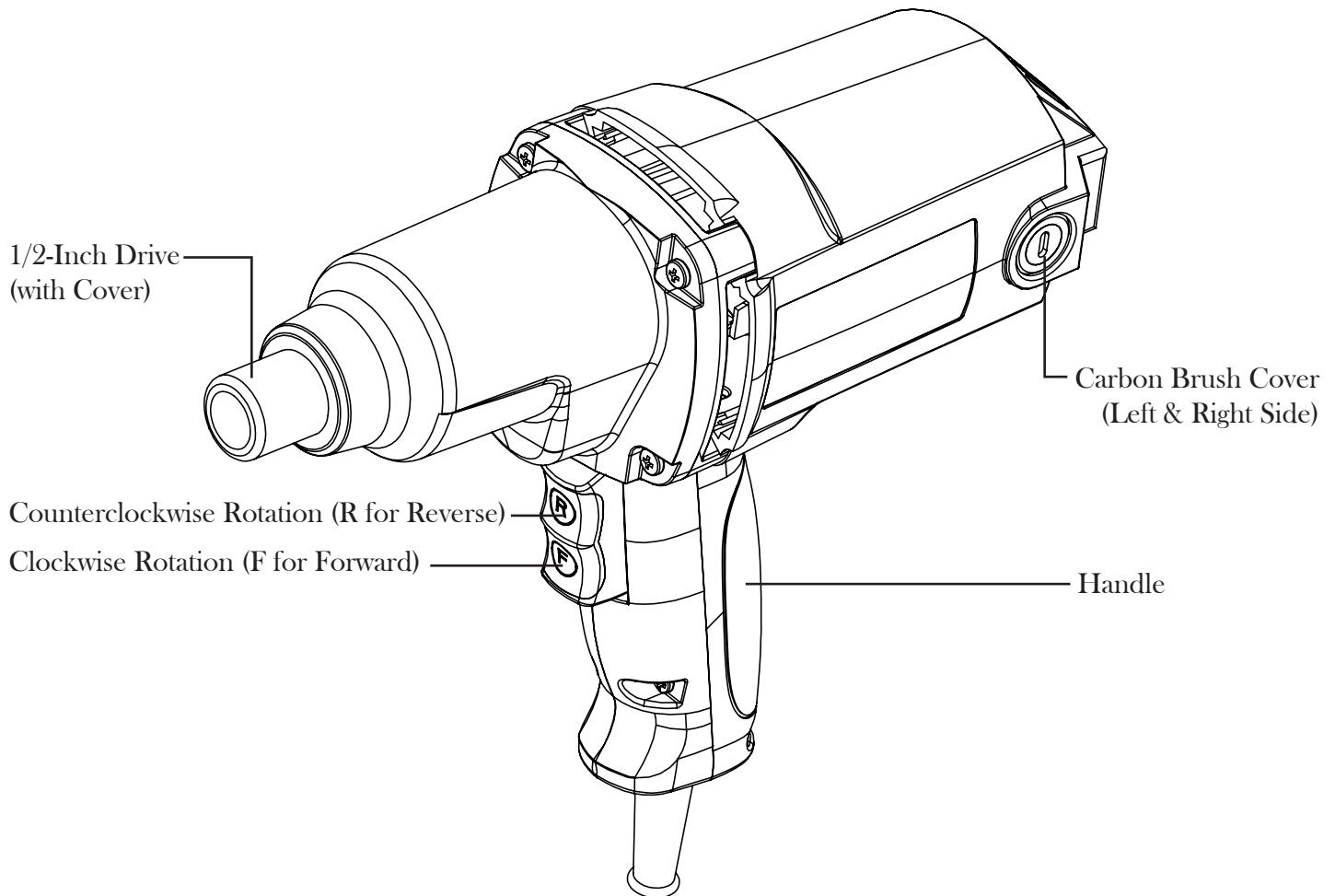
When using an extension cord, be sure to use one heavy enough to carry the current your product will draw. An undersized cord will cause a drop in line voltage resulting in loss of power and overheating. The table below shows the correct size to be used according to cord length and nameplate ampere rating. When in doubt, use a heavier cord. The smaller the gauge number, the heavier the cord.

AMPERAGE	REQUIRED GAUGE FOR EXTENSION CORDS			
	25 ft.	50 ft.	100 ft.	150 ft.
7.5A	18 gauge	16 gauge	14 gauge	12 gauge

1. Examine extension cord before use. Make sure your extension cord is properly wired and in good condition. Always replace a damaged extension cord or have it repaired by a qualified person before using it.
2. Do not abuse extension cord. Do not pull on cord to disconnect from receptacle; always disconnect by pulling on plug. Disconnect the extension cord from the receptacle before disconnecting the product from the extension cord. Protect your extension cords from sharp objects, excessive heat and damp/wet areas.
3. Use a separate electrical circuit for your tool. This circuit must not be less than a 12-gauge wire and should be protected with a 15A time-delayed fuse. Before connecting the motor to the power line, make sure the switch is in the OFF position and the electric current is rated the same as the current stamped on the motor nameplate. Running at a lower voltage will damage the motor.

KNOW YOUR IMPACT WRENCH

Carefully unpack the tool from the packaging. Check all components and compare against the diagram below. If any part is damaged or missing, please contact our customer service at (800) 232-1195, M-F 8-5 CST or email us at techsupport@wenproducts.com.



POWER & DIRECTIONAL SWITCH

The switch of the impact wrench controls both the power and rotational direction of the drive.

- To run the tool in a clockwise direction, press the lower part of the switch (F for forward).
- To run the tool in a counterclockwise direction, press the upper part of the switch (R for reverse).
- To turn OFF the tool, release the switch.

INSTALLING THE DRIVE BIT

The impact wrench is equipped with a quick-connect drive that accepts 1/2-inch drive bits (not included). To install the drive bit, first turn OFF and unplug the tool. Remove the plastic cover and slide the drive bit over the drive until it is secured. Always make sure the bit is securely installed before starting the impact wrench.

OPERATION



WARNING: To prevent serious injury, make sure all the warnings and instructions have been read and understood before operating this tool.

WORK AREA AND WORKPIECE SET UP

1. Designate a work area that is clean and well-lit, away from possible hazards.
2. Safely route the power cord to the tool to avoid exposing the power cord to possible damage or creating a tripping hazard. The power cord must reach the work area with enough extra length to allow free movement while working.
3. Secure loose workpieces using a vise or clamps (not included) to prevent movement while working. Never hold a workpiece in your hands or across your legs.

GENERAL OPERATION

1. Plug your tool into an appropriate power outlet.
2. Hold the tool with both hands, keeping one hand on the handle and the other hand on the front housing.
3. Turn ON the wrench by pressing the corresponding area of the switch for either clockwise (F) or counterclockwise (R) rotation.

NOTE: Check the bit rotation before beginning your work.

4. The torque is controlled by the pressure exerted on the power switch. Use the appropriate amount of torque for the work, but do not force the tool.

NOTE: The amount of actual torque may vary depending on the condition of the threads and other factors. If tightening critical components, check the actual torque applied to the fastener with a mechanical torque wrench (not supplied).



WARNING: Do not touch or hold the drive bit during use.

5. When finished with the work, release the power switch. Wait for the tool to come to a complete stop before setting it down. Disconnect its power supply. Follow the instructions on the next page to maintain your tool.

MAINTENANCE



WARNING: To avoid accidents, always disconnect the tool from the power supply before cleaning or performing any maintenance. Servicing of the tool must be performed by a qualified technician.

CLEANING AND STORAGE

1. Wipe the tool after every use with a soft cloth or low-pressure compressed air. Do not let water enter the tool.
2. Keep the ventilation openings free from dust and debris to prevent the motor from overheating.
3. Most plastics are susceptible to damage from various types of commercial solvents. Do not use any solvents or cleaning products that could damage the plastic parts. Some of these include but are not limited to: gasoline, carbon tetrachloride, chlorinated cleaning solvents, ammonia and household detergents that contain ammonia.
4. Store the tool in a clean and dry place away from the reach of children.

CARBON BRUSH REPLACEMENT

The wear on the carbon brushes depends on how frequently and how heavily the tool is used. To maintain maximum efficiency of the motor, we recommend inspecting the two carbon brushes every 60 hours of operation or when the tool stops working.

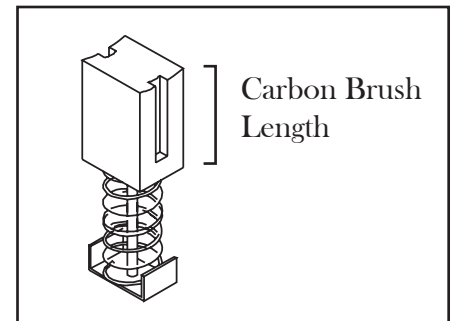
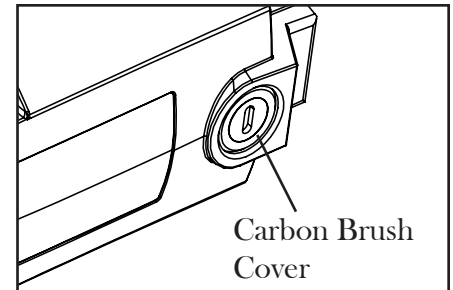
NOTE: Replacement carbon brushes (Part No. 48107-022) can be ordered at wenproducts.com. Only genuine WEN replacement brushes designed specifically for your tool should be used.

1. To access the carbon brushes, remove the carbon brush covers on the left and right side of the motor housing.
2. Carefully remove the carbon brushes using pliers. Keep track of which orientation the old carbon brushes were in to prevent needless wear if they will be reinstalled.
3. Measure the length of the brushes. Replace the brushes if either carbon brush length is worn down to $\frac{3}{16}$ of an inch. Both carbon brushes should be replaced at the same time.
4. Install the carbon brushes and the carbon brush covers.

NOTE: New carbon brushes tend to spark for a few minutes during the first use as they wear down.

PRODUCT DISPOSAL

Used power tools should not be disposed of together with household waste. This product contains electronic components that should be recycled. Please take this product to your local recycling facility for responsible disposal and to minimize its environmental impact.



TROUBLESHOOTING

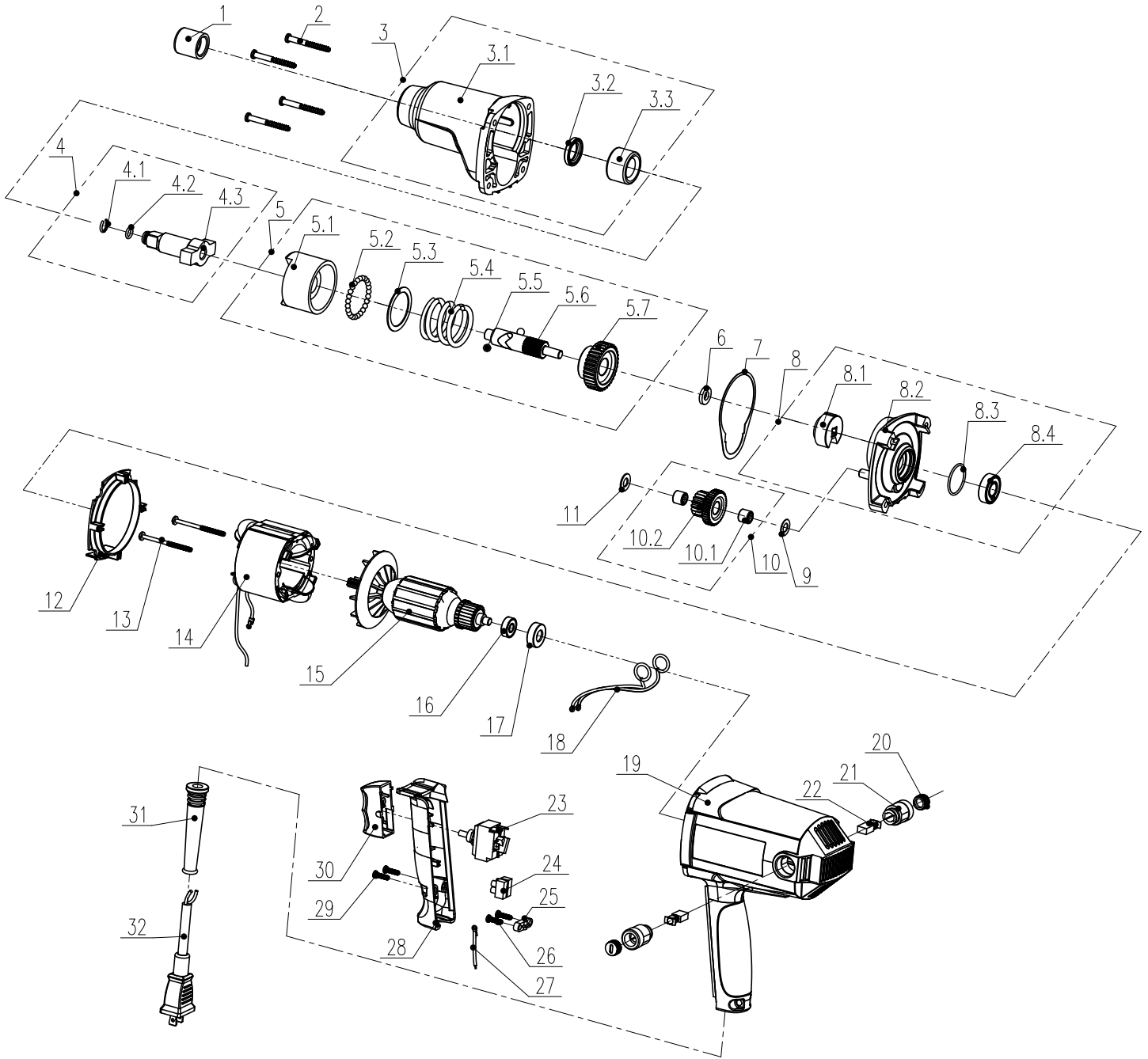


WARNING: Stop using the tool immediately if any of the following problems occur. Repairs and replacements should only be performed by authorized personnel. If you have any questions, please contact our customer service at (800) 232-1195, M-F 8-5 CST or email us at techsupport@wenproducts.com.

Problem	Possible Cause	Solution
Motor does not start	Power cord damaged or not properly plugged in.	Check the power cord, extension cord, power plug and the power outlet. Do not use the tool if any cord is damaged.
	Defective power switch.	Stop using the tool and contact customer service at (800) 232-1195, M-F 8-5 CST for assistance.
	Insufficient power from power outlet.	Make sure the outlet is functional and is the right capacity for the tool.
	Carbon brushes (Part No. 48107-022) are worn.	Inspect and replace carbon brushes as needed (see page 10) Replacement brushes (48107-022) can be ordered from wenproducts.com
	Defective motor or other internal damage.	Stop using the tool and contact customer service at (800) 232-1195, M-F 8-5 CST for assistance.
Excessive noise or vibration	Internal damage or wear.	Contact customer service at (800) 232-1195, M-F 8-5 CST for assistance.
Overheating	Tool forced to work too fast.	Do not force the tool and let it work at its own pace.
	The extension cord is too long or too thin	See page 7 for selecting the proper size of extension cord for your tool.
	Blocked motor housing vents	Blow dust out of the motor housing vents while wearing safety goggles and dust mask.
Ineffective Performance	Drive bits worn or damaged.	Replace bits as needed.
	Carbon brushes (Part No. 48107-022) are worn.	Inspect and replace carbon brushes as needed (see page 10). Replacement brushes (48107-022) can be ordered from wenproducts.com

NOTE: Parts that wear down over the course of normal use (like accessories, carbon brushes, etc.) are not covered by the two-year warranty. Repairs and replacements should only be performed by an authorized technician.

EXPLODED VIEW & PARTS LIST



EXPLODED VIEW & PARTS LIST

No.	Part No.	Description	Qty.
1	48107-001	Plastic Sleeve	1
2	48107-002	Screw ST5x45	4
3	48107-003	Head Housing Assembly	1
3.1	48107-003.1	Head Housing	1
3.2	48107-003.2	Sealing Ring	1
3.3	48107-003.3	Sliding Bearing Ø32xØ19x21	1
4	48107-004	Shaft Assembly	1
4.1	48107-004.1	Elastic Collar	1
4.2	48107-004.2	Rubber Ring Ø9.5xØ2	1
4.3	48107-004.3	Shaft	1
5	48107-005	Impact Block Assembly	1
5.1	48107-005.1	Impact Block	1
5.2	48107-005.2	Steel Ball (Roller)	25
5.3	48107-005.3	Washer Ø33.8xØ43.2x1mm	1
5.4	48107-005.4	Spring	1
5.5	48107-005.5	Steel Ball	2
5.6	48107-005.6	Gear Shaft	1
5.7	48107-005.7	Big Gear Wheel	1
6	48107-006	Washer Ø8.3xØ17x3mm	1
7	48107-007	Gasket	1
8	48107-008	Cover Assembly	1
8.1	48107-008.1	Sliding Bearing Ø32xØ8x16mm	1
8.2	48107-008.2	Motor Outer Cover	1
8.3	48107-008.3	Sealing Ring Ø26.5xØ2	1
8.4	48107-008.4	Bearing 6001Z Ø28xØ12x8	1

No.	Part No.	Description	Qty.
9	48107-009	Washer Ø17xØ8x1mm	1
10	48107-010	Gear Assembly	1
10.1	48107-010.1	Needle Bearing Ø12xØ8x10	2
10.2	48107-010.2	Gear	1
11	48107-011	Washer Ø8.4xØ16x0.5	1
12	48107-012	Motor Inner Cover	1
13	48107-013	Self Tapping Screw ST4x60	2
14	48107-014	Stator	1
15	48107-015	Rotor	1
16	48107-016	Deep-Groove Ball Bearing Ø19xØ7x6	1
17	48107-017	Bearing Sleeve	1
18	48107-018	Wire	2
19	48107-019	Front Housing	1
20	48107-020	Brush Cover	2
21	48107-021	Brush Holder	2
22	48107-022	Carbon Brush	2
23	48107-023	Switch	1
24	48107-024	Terminal	2
25	48107-025	Cord Clamp	1
26	48107-026	Self Tapping Screw ST4x14	2
27	48107-027	Lead Wire	1
28	48107-028	Handle Back Housing	1
29	48107-029	Self Tapping Screw ST4x18	2
30	48107-030	Trigger	1
31	48107-031	Cord Sleeve	1
32	48107-032	Power Cord With Plug	1

LIMITED TWO YEAR WARRANTY

WEN Products is committed to build tools that are dependable for years. Our warranties are consistent with this commitment and our dedication to quality.

LIMITED WARRANTY OF WEN CONSUMER POWER TOOLS PRODUCTS FOR HOME USE

GREAT LAKES TECHNOLOGIES, LLC (“Seller”) warrants to the original purchaser only, that all WEN consumer power tools will be free from defects in material or workmanship for a period of two (2) years from date of purchase. Ninety days for all WEN products, if the tool is used for professional use.

SELLER’S SOLE OBLIGATION AND YOUR EXCLUSIVE REMEDY under this Limited Warranty and, to the extent permitted by law, any warranty or condition implied by law, shall be the repair or replacement of parts, without charge, which are defective in material or workmanship and which have not been misused, carelessly handled, or misrepaired by persons other than Seller or Authorized Service Center. To make a claim under this Limited Warranty, you must make sure to keep a copy of your proof of purchase that clearly defines the Date of Purchase (month and year) and the Place of Purchase. Place of purchase must be a direct vendor of Great Lakes Technologies, LLC. Third party vendors such as garage sales, pawn shops, resale shops, or any other secondhand merchant void the warranty included with this product. Contact techsupport@wenproducts.com or 1-800-232-1195 to make arrangements for repairs and transportation.

When returning a product for warranty service, the shipping charges must be prepaid by the purchaser. The product must be shipped in its original container (or an equivalent), properly packed to withstand the hazards of shipment. The product must be fully insured with a copy of the warranty card and/or the proof of purchase enclosed. There must also be a description of the problem in order to help our repairs department diagnose and fix the issue. Repairs will be made and the product will be returned and shipped back to the purchaser at no charge.

THIS LIMITED WARRANTY DOES NOT APPLY TO ACCESSORY ITEMS THAT WEAR OUT FROM REGULAR USAGE OVER TIME INCLUDING BELTS, BRUSHES, BLADES, ETC.

ANY IMPLIED WARRANTIES SHALL BE LIMITED IN DURATION TO TWO (2) YEARS FROM DATE OF PURCHASE. SOME STATES IN THE U.S., SOME CANADIAN PROVINCES DO NOT ALLOW LIMITATIONS ON HOW LONG AN IMPLIED WARRANTY LASTS, SO THE ABOVE LIMITATION MAY NOT APPLY TO YOU.

IN NO EVENT SHALL SELLER BE LIABLE FOR ANY INCIDENTAL OR CONSEQUENTIAL DAMAGES (INCLUDING BUT NOT LIMITED TO LIABILITY FOR LOSS OF PROFITS) ARISING FROM THE SALE OR USE OF THIS PRODUCT. SOME STATES IN THE U.S. AND SOME CANADIAN PROVINCES DO NOT ALLOW THE EXCLUSION OR LIMITATION OF INCIDENTAL OR CONSEQUENTIAL DAMAGES, SO THE ABOVE LIMITATION OR EXCLUSION MAY NOT APPLY TO YOU.

THIS LIMITED WARRANTY GIVES YOU SPECIFIC LEGAL RIGHTS, AND YOU MAY ALSO HAVE OTHER RIGHTS WHICH VARY FROM STATE TO STATE IN THE U.S., PROVINCE TO PROVINCE IN CANADA AND FROM COUNTRY TO COUNTRY.

THIS LIMITED WARRANTY APPLIES ONLY TO PORTABLE ELECTRIC TOOLS, BENCH POWER TOOLS, OUTDOOR POWER EQUIPMENT AND PNEUMATIC TOOLS SOLD WITHIN THE UNITED STATES OF AMERICA, CANADA AND THE COMMONWEALTH OF PUERTO RICO. FOR WARRANTY COVERAGE WITHIN OTHER COUNTRIES, CONTACT THE WEN CUSTOMER SUPPORT LINE.

**THANKS FOR
REMEMBERING**

