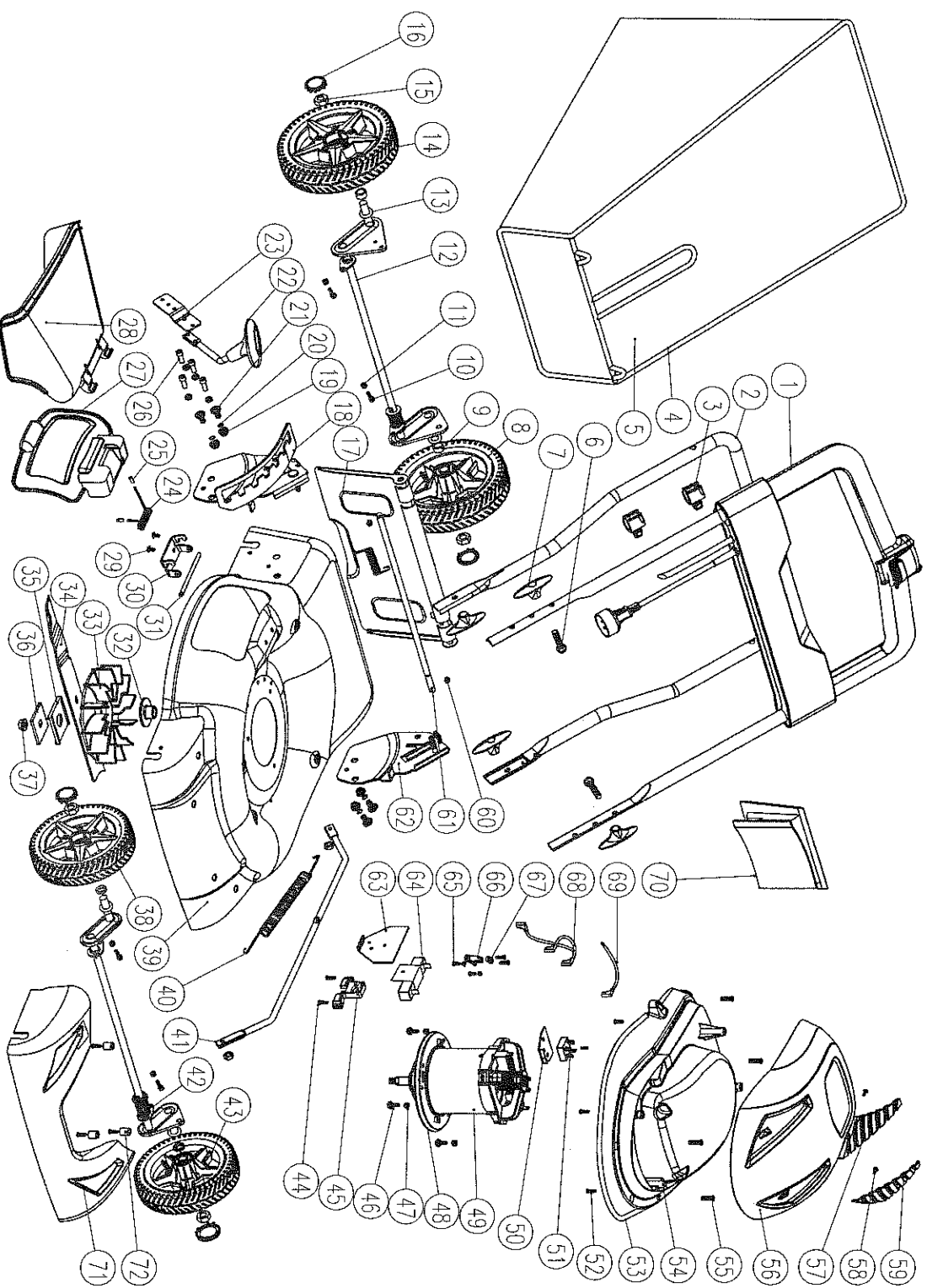


EXPLODED VIEW/PARTS LIST

MODEL UT13124



Key No.	Part No.	Description	Qty.	Key No.	Part No.	Description	Qty.
1	8440-516301	switch and power cable assy	1	37	8207-517001	blade nut	1
2	8001-516202	lower handle	1	38	9121-516304	7in left front wheel	1
3	8007-517001	cord guide	2	39	8005-516301	deck	1
4	8291-516201	grass catcher frame	1	40	8342-517002	extension spring	1
5	8102-516202	grass catcher bag	1	41	8087-516202-02	link bar	1
6	8206-517001	bolt	1	42	8440-517401	20 in front wheel axle	1
7	8313-516301	knob	4	43	8121-516303	7in right front wheel	1
8	8121-516301	8 in right rear wheel	1	44	8S,JAB50-16Q	self-tapping screw	2
9	8224-516201	rear wheel ferrule	2	45	8291-517001	resistance support	1
10	8SACDD05-12Q8,8	screw	4	46	8SCDD06-16D	flange bolt	3
11	8NG-05Q018,8	flange bolt	12	47	8NG-08Q01	self locking nut	5
12	8440-517402	rear wheel axle assy	1	48	8335-517101	gasket	1
13	8020-516201	washer	4	49	8401-517001	motor	1
14	8121-516302	8 in left rear wheel	4	50	8183-517202	radiator resistance	1
15	8NH-09D	self locking nut	4	51	8427-517001	electric bridge	1
16	8020-516302	wheel cover	4	52	8S,JAB40-14Q	self-tapping screw	4
17	8020-516216	rear discharge door	1	53	8331-517003	motor cover envelope	1,2
18	8321-518102-01	height adjust bracket(right)	1	54	8024-516301	motor cover	1
19	8ND-10D01	nut	4	55	8S,JAD05-18Q01	Machine screw	4
20	8WS-10Q	spring pad	4	56	8020-516301	motor vent	1
21	8SBCD10-20D	screw	4	57	8181-516302	right shifter	1
22	8001-516301	height adjustment handle	4	58	8SNAB30-10B	self-tapping screw	1
23	8321-517009	spring board	1	59	8181-516301	left shifter	2
24	8342-516202-01	compression spring	1	60	8CE-08Q	E-ring	1
25	8025-516205	rubber cap	4	61	8081-516211	rear discharge pin	1
26	8SKCDD05-14Q02	screw	4	62	8321-516201-01	height adjust bracket(left)	1
27	8020-516202SB	side discharge door	4	63	8183-516203	radiator resistance	1
28	8020-516203SB	side discharge deflector	1	64	8417-516201	resistance bracket	1
29	8S,QDD06-08D	flange bolt	2	65	8S,JAD05-10Q02	Machine screw	2
30	8321-517008	spring board	1	66	8141-517001	cord guide	1
31	8081-516204	slide discharge pin	1	67	8184-282101	wire clip	1
32	8224-516202	spindle guard	1	68	8413-517002	connection line	1
33	8403-517001	fan	1	69	8413-517001	connection line	1
34	8231-516201	blade	1	70	8020-516204	mulching plug assy	1
35	8181-517002	blade insulator	1	71	8181-516403	front baffle	1
36	8321-517006	spacer	1	72	8025-516201	bolt	4