

### Features

- Coordinates with K-20195 to create modular sizes.
- Three-way adjustable slow close door hinges with 100-degree opening capability for easy cabinet access.
- Includes uninstalled decorative cabinet hardware.

### Installation

- Detachable vanity bridge legs.
- Includes installed stone top.

### Recommended Accessories

K-20195 Vanity with Ceramic Top



### Codes/Standards

EPA TSCA Title VI  
CARB P2

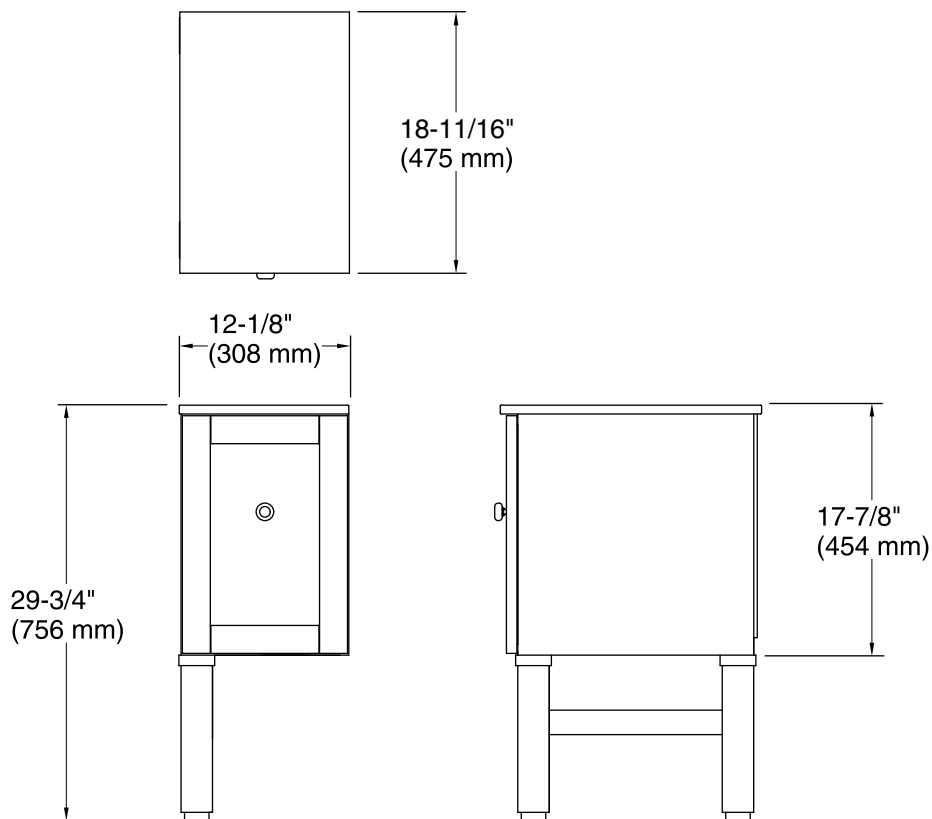
### KOHLER® One-Year Limited Warranty

See website for detailed warranty information.

### Available Color/Finishes

*Color tiles intended for reference only.*

Color	Code	Description
	1WA	Linen White
	F69	Woodland
	F2	Black Forest
	1WT	Mohair Grey



### Technical Information

All product dimensions are nominal.

Vanity type: Standard

### Notes

Install this product according to the installation instructions.

Select the type of fastener based upon the wall material. A minimum 250 lb (113.4 kg) load bearing fastener is recommended.