

SimpleMat™

TILE SETTING MAT

The quickest, easiest, cleanest way to install tile.

No Mortar, No Mixing, No Mess

Complete Your Project in a Day

No Waiting Between Setting and Grouting

THINGS YOU SHOULD KNOW

Acceptable Tile - SimpleMat can be used with any type of ceramic, porcelain, stone or glass tile 1" x 1" (2.5 x 2.5 cm) or larger. Mosaic tile with an open mesh backing can also be used as long as the thin side of the tile is at least 5/8" (1.6 cm). Tiles should not be heavier than 7 lbs. (3.2 kg) or larger than 8" x 8" (20 x 20 cm).

Areas of Use - SimpleMat is suitable for kitchen or bath counters, backsplashes, shower walls, and tub surrounds. SimpleMat should not be used on floors, ceilings, showers floors or submerged applications (i.e. swimming pools). SimpleMat is not recommended for outdoor use.

Surface Types - SimpleMat can be used to tile over many household surfaces. Tile over drywall, plywood, WonderBoard® Lite backerboard, concrete, painted surfaces, laminates and even old tile. All surfaces to be tiled should be flat, stable, even, clean, dry and free of dust and grease.

Surface Preparation - For backsplashes or countertops — patch or level if needed. For shower walls see preparation instructions (included).

Setting Order - Set countertop tiles prior to setting backsplash tiles. Set countertops from front to back, set backsplashes and shower walls from bottom up.

Clean Surfaces - Before installing be sure to wipe walls, counters, and backs of tile or stone with a damp sponge and allow to dry. Remove dust to ensure a strong bond.

Coverage - One box of SimpleMat covers 10 square feet (.92 M²).

Grout Requirement - SimpleMat is designed to be used with grout to lock-in tile and stone. Grout your installation within 24 hours with the recommended SimpleGrout™ Pre-Mixed Grout or Fusion Pro™ Single Component Grout™. You may also use Polyblend® Grout or CEG-Lite™ Commercial 100% Solids Epoxy Grout.

Customer Support - If you need additional information or to watch instructional videos visit www.thesimplemat.com. Customer support is available at 800-272-8786.

TOOLS

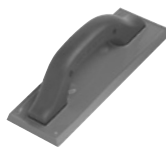
IN ADDITION TO YOUR TILE OR STONE, ALL YOU NEED TO COMPLETE YOUR PROJECT:



SimpleMat



SimpleGrout or Fusion Pro
Single Component Grout



Grout Float



Tile Spacers



Sponge



Scissors

Your project may also require a tile saw or tile cutter.

Countertops

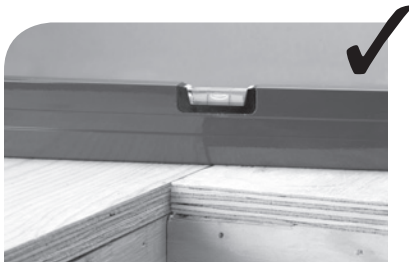
STEP 1

BEFORE YOU BEGIN

PREPARE YOUR COUNTERTOP



Clean dust and debris. Wipe with a damp sponge.



Ensure a flat, square counter or wall surface.

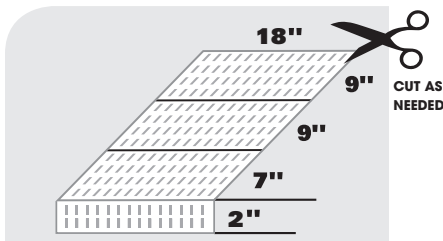


Do not apply to uneven surfaces.

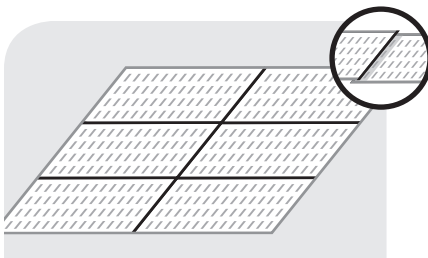
STEP 2

COUNTERTOPS LAYOUT & APPLICATION

SIMPLEMAT LAYOUT FOR COUNTERTOP



For efficiency lay SimpleMat horizontally on counter.



Overlap SimpleMat edges 1/8" to 1/4" (3 - 6 mm). Overlapping is shaded in illustration.

APPLYING SIMPLEMAT TO COUNTERTOP



Peel off white paper.



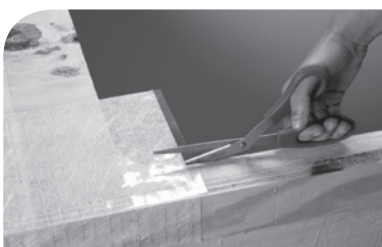
Apply SimpleMat to counter.



Flatten air bubbles and creases.



Cover all surfaces to be tiled.



Cut SimpleMat as needed.



Cut corner from end of mat to facilitate folding of corner.

Backsplashes

STEP 1

BEFORE YOU BEGIN

PREPARE YOUR BACKSPLASH



Clean dust and debris. Wipe with a damp sponge.



Ensure a flat counter or wall surface.



Do not apply to uneven surfaces.

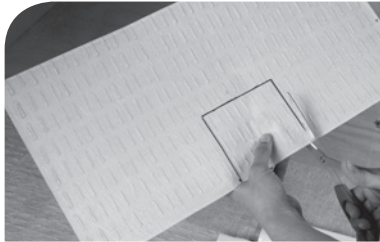
STEP 2

BACKSPLASHES LAYOUT & APPLICATION

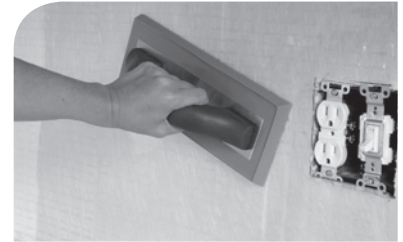
APPLYING SIMPLEMAT TO BACKSPLASH



Place SimpleMat in position and mark cuts if needed.



Cut SimpleMat with scissors or utility knife.



Apply SimpleMat then flatten air bubbles and creases.

Shower Walls

STEP 1

BEFORE YOU BEGIN

PREPARE YOUR SHOWER WALLS



Nail or staple 16 lb roofing felt or 4 mil polyethylene sheeting to studs.



Install 1/2" (13 mm) cement backboard for wall installation. Cut open areas to support plumbing fixtures.



Clean dust and debris.



Ensure a flat counter or wall surface.

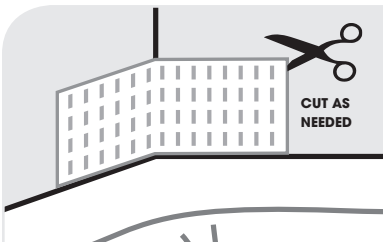


Do not apply to uneven surfaces.

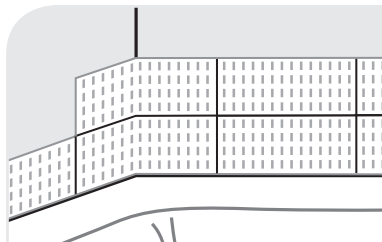
STEP 2

SHOWER WALLS LAYOUT & APPLICATION

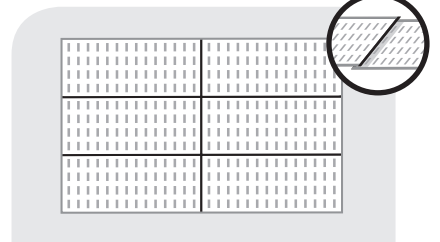
SIMPLEMAT LAYOUT FOR SHOWER WALLS



A single sheet of SimpleMat must run across a corner with at least 1" (25 mm) of excess material on each wall.



Lay SimpleMat horizontally on shower walls starting from the bottom of your shower wall up.

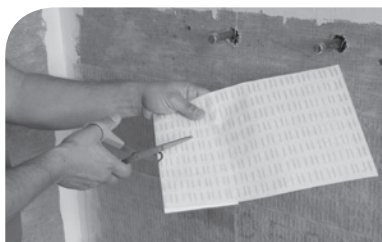


Overlap SimpleMat edges 1/8" to 1/4" (3 - 6 mm). Overlapping is shaded in illustration.

APPLYING SIMPLEMAT TO SHOWER WALLS



Place SimpleMat in position and mark cuts if needed.



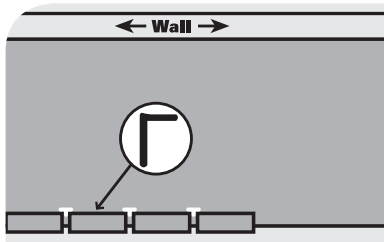
Cut SimpleMat with scissors or utility knife.



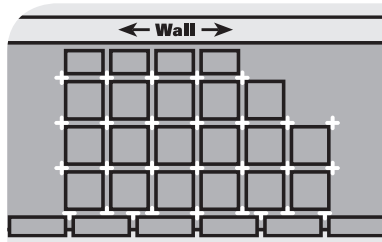
Apply SimpleMat then flatten air bubbles and creases.

Countertops, Backsplashes & Shower Walls

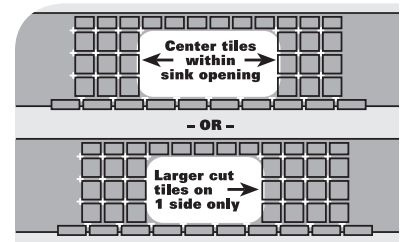
TILE LAYOUT FOR COUNTERTOPS



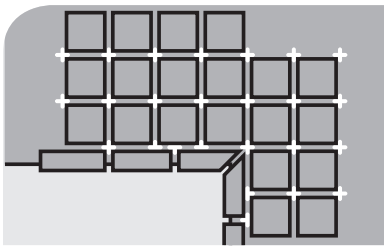
Begin layout by positioning the front edge tiles bull nose or v-cap along the front of the countertop.



Do a dry run by placing as many full tiles on the countertop with spacers as necessary. If countertop abuts a wall, lay cut tiles against the wall.

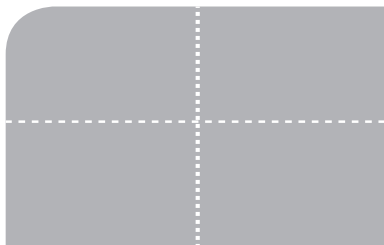


For straight countertops, mark centerline of countertop or sink, then lay tiles so cut pieces beside sink are the same width. Avoid less than half-width cut tiles by shifting the layout 1/2 tile left or right.

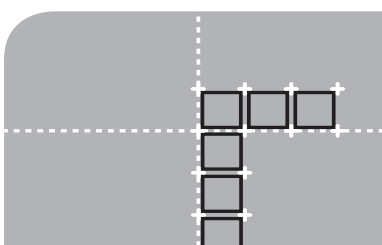


For L-shaped countertops, lay full tiles at inside corner. Set bull nose or v-cap pieces in place to ensure correct amount of overhanging pieces.

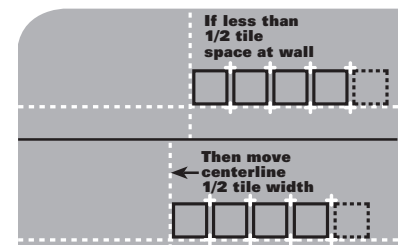
TILE LAYOUT FOR BACKSPASHES & SHOWER WALLS



Mark centerlines of the wall.



To determine tile placement and cuts, lay it out on the floor first, placing a row of tiles along each line using spacers. Then replicate the measurements on the wall.



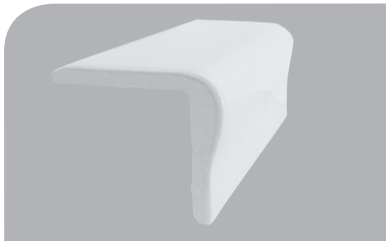
If the space at the wall end is less than 1/2 tile, shift centerline to eliminate small cuts. This will allow wide, even tiles at both edges.

TIPS BEFORE YOU SET YOUR COUNTERTOP — USING V-CAP OR BULL NOSE TILE



BULL NOSE TILE: Regular shaped tile with a rounded edge used for counter edge and other transitions.

OR



V-CAP TILE: L-shaped tile specifically used to cover the front edge of a countertop.



First apply tile to front of counter.



Ensure that counter tile overlaps and use spacers for a uniform grout joint.



Because v-cap may not fit squarely on countertop, use grout or SimpleFix Ceramic Tile & Fixture Caulk to fill voids between v-cap and countertop.



Do not apply excessive filler material as it will interfere with bond.

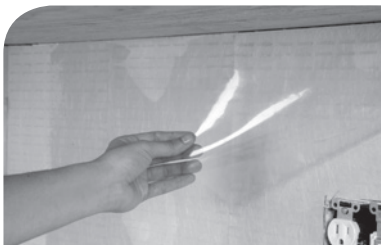
Countertops, Backsplashes & Shower Walls

STEP 3

SETTING TILE



Clean back of tile or stone with a damp sponge. Tile must be dry before setting.



Remove clear plastic from SimpleMat.



Lightly set tile into place using tile spacers.



Adjust tiles as needed.



Press tile firmly to lock into place.



Ready to grout with SimpleGrout, Fusion Pro. Grout your installation within 24 hours of setting tile over SimpleMat.



CUSTOM[®]

Seal Beach, CA 90740
800-272-8786
custombuildingproducts.com
©2013

www.thesimplemat.com