

Inspiring Great Spaces®



VINYL COMPOSITION TILE

PREMIUM EXCELON®

Crown Texture™ Raffia™ ChromaSpin™ Stonetex®
Companion Square® Feature™ Tile & Strips

STANDARD EXCELON®

Imperial® Texture MultiColor™

VCT Product Structure

Premium Excelon[®], Standard Excelon[®]

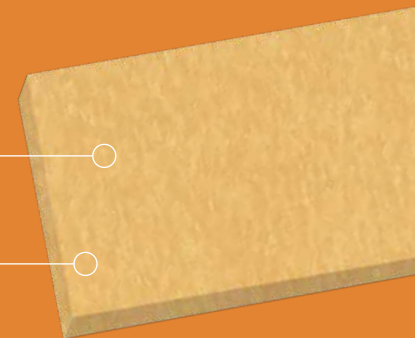
Wear Layer: Entire product
Dimensionally Stable: Size and squareness
Recycled Content: Pre-consumer

Exclusive Fast Start[®] Factory Finish

- Protective layer during installation
- Makes initial maintenance quick and easy

Through-Color/Pattern Wear Layer

- Pattern/color wear performance:
 - High durability
 - Gouge resistance
 - Rolling load impact resistance**
 - Appearance retention



**Visit ArmstrongFlooring.com for proper installation, care, and maintenance information.



Standard Excelon® Imperial® Texture

51800 buttercream yellow, 51811 antique white, 51812 lemon yellow, 51880 maraschino, 57510 kickin kiwi, 57513 vicious violet, 57516 screamin pumpkin, 57517 bodacious blue

A Classic, Economical Value

Armstrong Flooring creates products that push the limits of color, pattern, performance, and sustainability to meet the multiple demands of modern interiors. Developed through our Continuum™ Solutions, Excelon® VCT harmonizes with other products across the entire Armstrong Flooring portfolio to help you execute your design intent.

The durable construction ensures lasting beauty in high-traffic areas, while flowing linear patterns, organic looks, and densely patterned earth tones effectively mask scuffs and soil in busy spaces. Colors range from vivid hues to quiet neutrals with a large selection of light-reflective colors that can have a big impact on energy reduction strategies and savings.

With Excelon® VCT having one of the lowest carbon footprints among all our resilient flooring products, it is an ideal choice for hallways, classrooms, and cafeterias in schools and colleges, retail, mass market, grocery stores, food venues, and a wide range of public environments. It's versatile, durable, and easy to maintain using standard maintenance protocols.



Standard Excelon® MultiColor™
 52505 harlequin white, 52516 soleil yellow,
 52522 acrobat green



Responsible Choices

- Composed of 85% North American limestone, an abundant natural resource
- Three North American regional manufacturing locations reduce environmental impact from transportation
- Low VOC Emissions: FloorScore® certified meets the requirements of CDPH Standard Method V1.1-2010, compliant with LEED® EQ Credit 4
- Recyclable through the On&On™ Recycling Program

Size Options

- The first and only company to step outside the 12 in. x 12 in. box, Armstrong Flooring re-energizes vision and value with Stonetex® 18 in. x 18 in. and Raffia™ 12 in. x 24 in. tile, while still offering the traditional 12 in. x 12 in. option

Trusted Long Term Performance

- Decades of industry-leading performance and durability
- Leader in the industry for over 50 years
- High quality with a reliable warranty

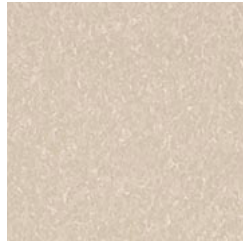


Premium Excelon® Raffia™
55800 snowdrift, 55802 charcoal dust, 55809 buttercup

Premium Excelon® Crown Texture™ Vinyl Composition Tile



5C234 12 in. x 12 in.
silk



5C811 12 in. x 12 in.
antique white



5C858 12 in. x 12 in.
sandrifft white



5C805 12 in. x 12 in.
camel beige



5C235 12 in. x 12 in.
impasto



5C803 12 in. x 12 in.
pearl white



5C236 12 in. x 12 in.
linseed



5C238 12 in. x 12 in.
safari tan



5C241 12 in. x 12 in.
honey



5C244 12 in. x 12 in.
patina



5C942 12 in. x 12 in.
curried caramel



5C232 12 in. x 12 in.
madagascar cinnamon



5C869 12 in. x 12 in.
humus



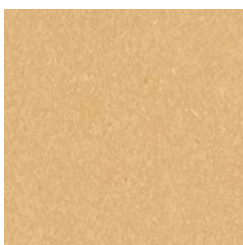
5C239 12 in. x 12 in.
taragon



5C243 12 in. x 12 in.
tannin



5C242 12 in. x 12 in.
carob



5C878 12 in. x 12 in.
golden



5C231 12 in. x 12 in.
kumquat orange



5C880 12 in. x 12 in.
maraschino



5C944 12 in. x 12 in.
tyrian purple

PREMIUM EXCELON® Crown Texture™
Vinyl Composition Tile



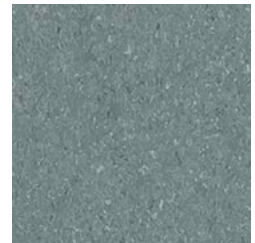
5C876 12 in. x 12 in.
mint cream



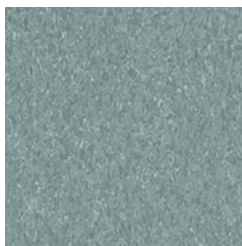
5C233 12 in. x 12 in.
spring leaf



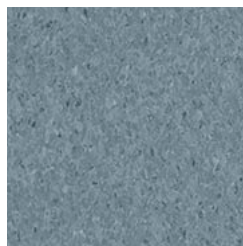
5C872 12 in. x 12 in.
tea garden green



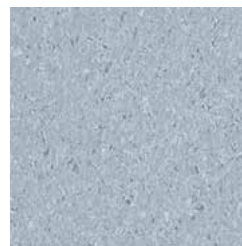
5C802 12 in. x 12 in.
silver green



5C906 12 in. x 12 in.
teal



5C875 12 in. x 12 in.
mid grayed blue



5C932 12 in. x 12 in.
lunar blue



5C882 12 in. x 12 in.
serene blue



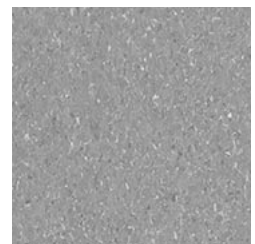
5C899 12 in. x 12 in.
cool white



5C237 12 in. x 12 in.
tracery



5C908 12 in. x 12 in.
pewter



5C904 12 in. x 12 in.
sterling



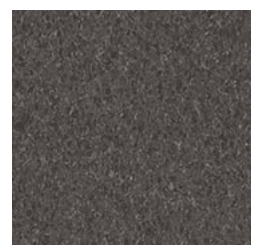
5C861 12 in. x 12 in.
soft warm gray



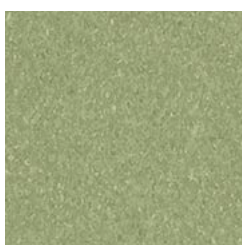
5C901 12 in. x 12 in.
taupe



5C868 12 in. x 12 in.
smokey brown



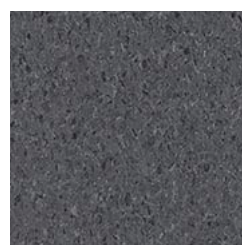
5C240 12 in. x 12 in.
peat



5C866 12 in. x 12 in.
little green apple



5C230 12 in. x 12 in.
victoria blue



5C915 12 in. x 12 in.
charcoal



5C910 12 in. x 12 in.
classic black

Premium Excelon® Raffia® Vinyl Composition Tile



55800 snowdrift 12 in. x 24 in.



55803 pearl 12 in. x 24 in.



55806 butter 12 in. x 24 in.



55809 buttercup 12 in. x 24 in.



55801 platinum 12 in. x 24 in.



55804 smoke 12 in. x 24 in.



55807 golden blossom 12 in. x 24 in.



55811 mesa 12 in. x 24 in.



55802 charcoal dust 12 in. x 24 in.



55805 cocoa 12 in. x 24 in.



55808 warm wheat 12 in. x 24 in.



55812 sky 12 in. x 24 in.



55813 wave 12 in. x 24 in.



55814 sage 12 in. x 24 in.



Premium Excelon® Raffia®
55806 butter, 55807 golden blossom

Standard Excelon® Imperial® Texture
51948 cinnamon brown

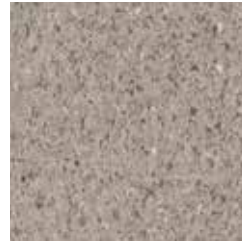
Premium Excelon® ChromaSpin™ Vinyl Composition Tile



54803 12 in. x 12 in.
lamp black



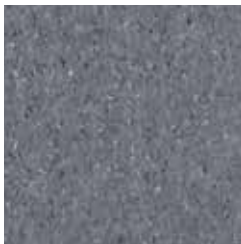
54813 12 in. x 12 in.
durer brown



54809 12 in. x 12 in.
chiaroscuro



54816 12 in. x 12 in.
raw sienna



54802 12 in. x 12 in.
carbonite



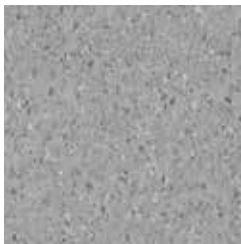
54812 12 in. x 12 in.
sepiatone



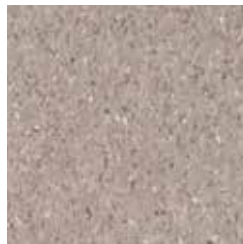
54808 12 in. x 12 in.
silk



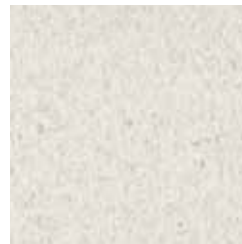
54815 12 in. x 12 in.
soft ochre



54801 12 in. x 12 in.
paynes gray



54811 12 in. x 12 in.
encaustic



54807 12 in. x 12 in.
primer white



54814 12 in. x 12 in.
muslin



54800 12 in. x 12 in.
zinc oxide



54804 12 in. x 12 in.
monotype



54810 12 in. x 12 in.
blanco



54819 12 in. x 12 in.
conte crayon



54806 12 in. x 12 in.
mezzotint



54805 12 in. x 12 in.
aquatint



54818 12 in. x 12 in.
india red

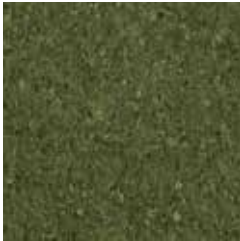
PREMIUM EXCELON® ChromaSpin™
Vinyl Composition Tile



54817 deep yellow 12 in. x 12 in.



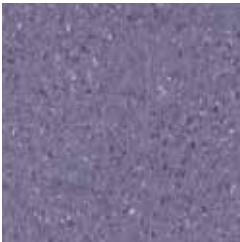
54823 flash red 12 in. x 12 in.



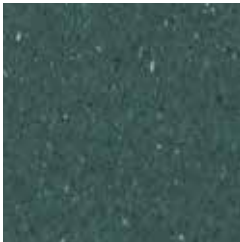
54831 olive 12 in. x 12 in.



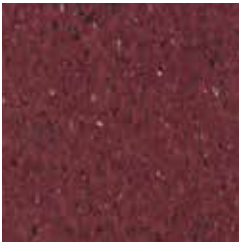
54820 brilliant orange 12 in. x 12 in.



54824 neodymium 12 in. x 12 in.



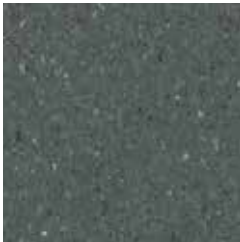
54830 chrome green 12 in. x 12 in.



54821 alizarin crimson 12 in. x 12 in.



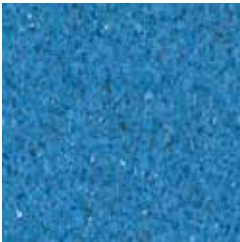
54826 windsor blue 12 in. x 12 in.



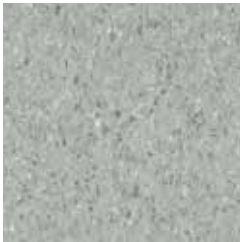
54829 shadow green 12 in. x 12 in.



54822 carminelle 12 in. x 12 in.



54827 cerulean 12 in. x 12 in.



54828 vermeer green 12 in. x 12 in.

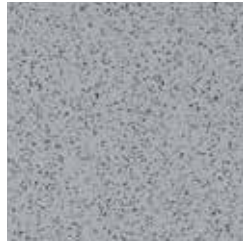


54825 mineral blue 12 in. x 12 in.

Premium Excelon® Stonetex® Vinyl Composition Tile



52140 12 in. x 12 in.
chalk white



52126 12 in. x 12 in.
gravel blue



52160 12 in. x 12 in.
hematite



52139 12 in. x 12 in.
limestone beige



52125 12 in. x 12 in.
granite gray



52161 12 in. x 12 in.
charcoal



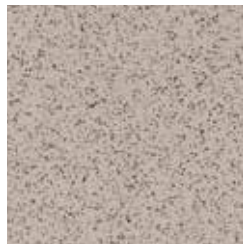
52144 12 in. x 12 in.
coal black



52172 12 in. x 12 in.
chamotte



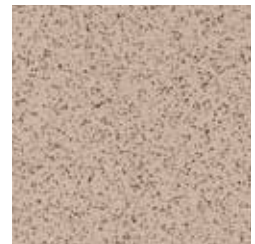
52127 12 in. x 12 in.
stone white



52122 12 in. x 12 in.
pebble gray



52147 12 in. x 12 in.
pumice stone



52165 12 in. x 12 in.
milky way



52128 12 in. x 12 in.
desert dust



52168 12 in. x 12 in.
golden fossil



52169 12 in. x 12 in.
ammonite



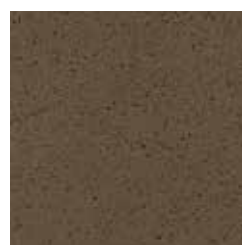
52141 12 in. x 12 in.
flagstone blue



52143 12 in. x 12 in.
sandstone tan



52149 12 in. x 12 in.
cocoa brown



52164 12 in. x 12 in.
dark chocolate



52180 12 in. x 12 in.
spanish moss

PREMIUM EXCELON® Stonetex®
Vinyl Composition Tile



52156 12 in. x 12 in.
bamboo yellow



52194 12 in. x 12 in.
lapis



52186 12 in. x 12 in.
hermit shale



52170 12 in. x 12 in.
golden bamboo



52173 12 in. x 12 in.
unfired clay



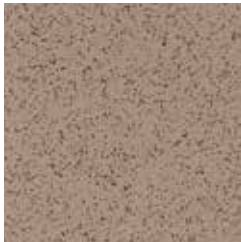
52157 12 in. x 12 in.
clay red



52189 12 in. x 12 in.
roman clay



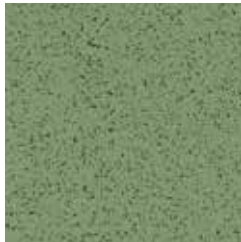
52179 12 in. x 12 in.
black jewel orchid



52166 12 in. x 12 in.
mochaccino



52167 12 in. x 12 in.
semi sweet



52199 12 in. x 12 in.
iguana



52202 12 in. x 12 in.
lime rickey



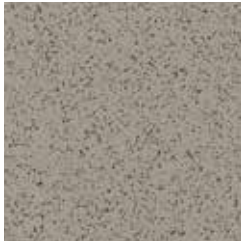
52135 12 in. x 12 in.
mineral dust



52148 12 in. x 12 in.
blue spruce



52183 12 in. x 12 in.
golden honey

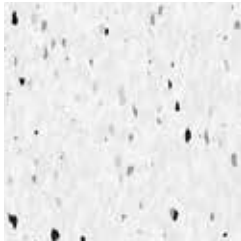


52155 12 in. x 12 in.
forest moss

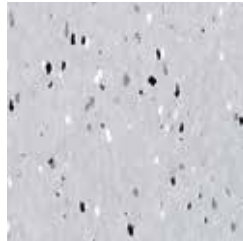


52154 12 in. x 12 in.
leaf green

Premium Excelon® Companion Square® Vinyl Composition Tile



51973 12 in. x 12 in.
mono white



51972 12 in. x 12 in.
mono gray



51977 12 in. x 12 in.
kaleidoscope white



51970 12 in. x 12 in.
mono black



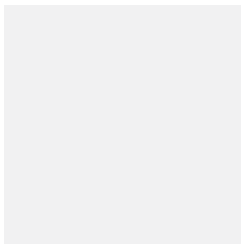
51974 12 in. x 12 in.
polychrome white



51983 12 in. x 12 in.
party white

Premium Excelon® Feature Tile™ & Strips Vinyl Composition Tile

chalk II



56830 12 in. x 12 in.
50830 2, 4, 6 in. x 24 in.

yellow II



56823 12 in. x 12 in.
50823 2, 4, 6 in. x 24 in.

blue II



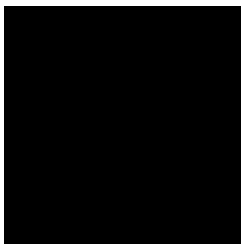
56812 12 in. x 12 in.
50812 2, 4, 6 in. x 24 in.

red II



56806 12 in. x 12 in.
50806 2, 4, 6 in. x 24 in.

black I



56790 12 in. x 12 in.
50790 2, 4, 6 in. x 24 in.

Standard Excelon® MultiColor™ Vinyl Composition Tile



52500 12 in. x 12 in.
carnival white



52505 12 in. x 12 in.
harlequin white



52506 12 in. x 12 in.
rodeo fawn



52513 12 in. x 12 in.
cirque white



52514 12 in. x 12 in.
jubilee white



52520 12 in. x 12 in.
faire white



52516 12 in. x 12 in.
soleil yellow



52521 12 in. x 12 in.
mint masquerade



52515 12 in. x 12 in.
coaster greige



52525 12 in. x 12 in.
pie car



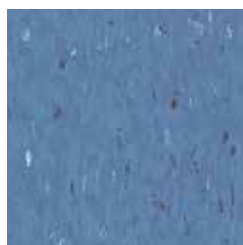
52523 12 in. x 12 in.
animal crackers



52524 12 in. x 12 in.
pageant spice



52517 12 in. x 12 in.
jester red



52518 12 in. x 12 in.
band blue



52522 12 in. x 12 in.
acrobat green

Standard Excelon® Imperial® Texture Vinyl Composition Tile



51811 12 in. x 12 in.
antique white



51836 12 in. x 12 in.
shelter white



51941 12 in. x 12 in.
polar white



51911 12 in. x 12 in.
classic white



51839 12 in. x 12 in.
fortress white



51876 12 in. x 12 in.
mint cream



51860 12 in. x 12 in.
soft cool gray



51861 12 in. x 12 in.
soft warm gray



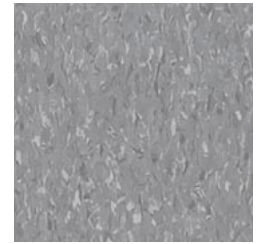
59235 12 in. x 12 in.
impasto



59236 12 in. x 12 in.
linseed



51807 12 in. x 12 in.
shadow blue



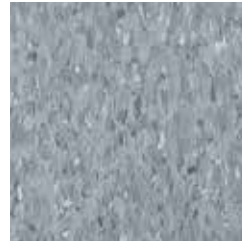
51904 12 in. x 12 in.
sterling



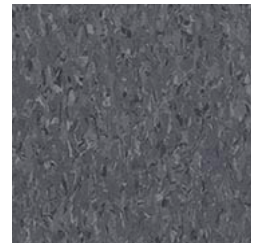
51858 12 in. x 12 in.
sandrifft white



59238 12 in. x 12 in.
safari tan



51903 12 in. x 12 in.
blue/gray



51915 12 in. x 12 in.
charcoal



51830 12 in. x 12 in.
cottage tan



59239 12 in. x 12 in.
taragon



51916 12 in. x 12 in.
dutch delft



51910 12 in. x 12 in.
classic black

STANDARD EXCELON® Imperial® Texture
Vinyl Composition Tile



51899 12 in. x 12 in.
cool white



51810 12 in. x 12 in.
washed linen



51929 12 in. x 12 in.
sandy beach



51905 12 in. x 12 in.
hazelnut



59234 12 in. x 12 in.
silk



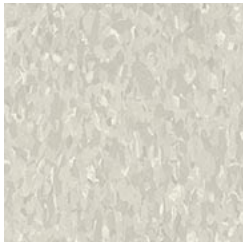
51803 12 in. x 12 in.
pearl white



51928 12 in. x 12 in.
pebble tan



57504 12 in. x 12 in.
chocolate



59237 12 in. x 12 in.
tracery



51804 12 in. x 12 in.
earthstone greige



57502 12 in. x 12 in.
café latte



57505 12 in. x 12 in.
rose hip



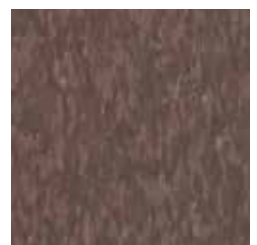
51908 12 in. x 12 in.
pewter



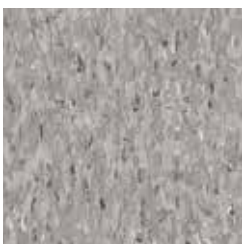
51868 12 in. x 12 in.
smokey brown



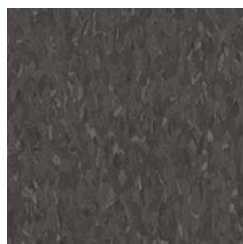
51901 12 in. x 12 in.
taupe



57500 12 in. x 12 in.
purple brown



51927 12 in. x 12 in.
field gray



59240 12 in. x 12 in.
peat



59242 12 in. x 12 in.
carob

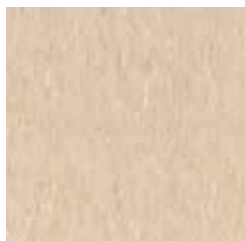


57507 12 in. x 12 in.
dusty plum

STANDARD EXCELON® Imperial® Texture Vinyl Composition Tile



51809 12 in. x 12 in.
desert beige



51873 12 in. x 12 in.
brushed sand



57509 12 in. x 12 in.
lemon lick



57516 12 in. x 12 in.
screamin' pumpkin



51805 12 in. x 12 in.
camel beige



57501 12 in. x 12 in.
nougat



51812 12 in. x 12 in.
lemon yellow



51867 12 in. x 12 in.
cantaloupe



59241 12 in. x 12 in.
honey



51801 12 in. x 12 in.
doeskin peach



51800 12 in. x 12 in.
buttercream yellow



59231 12 in. x 12 in.
kumquat orange



51869 12 in. x 12 in.
humus



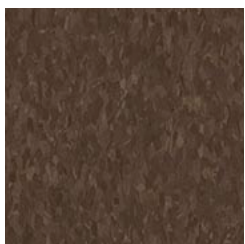
51942 12 in. x 12 in.
curried caramel



51878 12 in. x 12 in.
golden



51879 12 in. x 12 in.
etruscan red



59243 12 in. x 12 in.
tannin



59232 12 in. x 12 in.
madagascar cinnamon



59244 12 in. x 12 in.
patina



51943 12 in. x 12 in.
cayenne red

**STANDARD EXCELON® Imperial® Texture
Vinyl Composition Tile**



57515 12 in. x 12 in.
hot lips



57514 12 in. x 12 in.
shocking



51818 12 in. x 12 in.
violet bloom



51820 12 in. x 12 in.
marina blue



51880 12 in. x 12 in.
maraschino



57513 12 in. x 12 in.
vicious violet



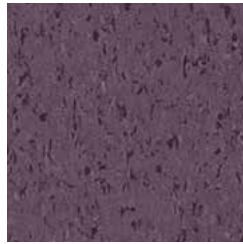
51881 12 in. x 12 in.
blueberry



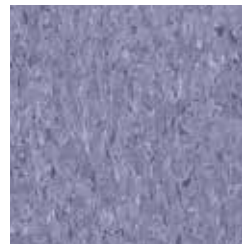
51933 12 in. x 12 in.
blue cloud



57503 12 in. x 12 in.
bubblegum



51944 12 in. x 12 in.
tyrian purple



51934 12 in. x 12 in.
lavender shadow



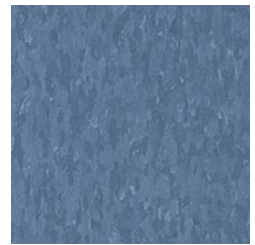
51932 12 in. x 12 in.
lunar blue



51814 12 in. x 12 in.
pomegranate red



57508 12 in. x 12 in.
blue dreams



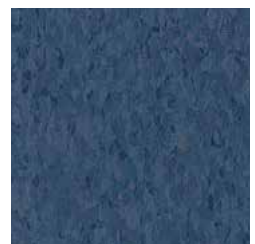
51882 12 in. x 12 in.
serene blue



51816 12 in. x 12 in.
cherry red



57517 12 in. x 12 in.
bodacious blue



59230 12 in. x 12 in.
victoria blue

STANDARD EXCELON® Imperial® Texture Vinyl Composition Tile



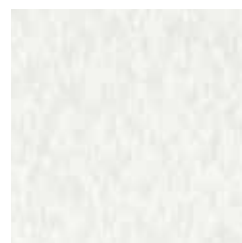
51821 12 in. x 12 in.
caribbean blue



57511 12 in. x 12 in.
grabbin' green



57510 12 in. x 12 in.
kickin' kiwi



57518 12 in. x 12 in.
white out



57512 12 in. x 12 in.
bikini blue



51824 12 in. x 12 in.
sea green



51866 12 in. x 12 in.
little green apple



51883 12 in. x 12 in.
dusty miller



57506 12 in. x 12 in.
colorado stone



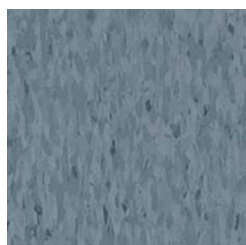
51938 12 in. x 12 in.
willow green



51885 12 in. x 12 in.
granny smith



51872 12 in. x 12 in.
tea garden green



51875 12 in. x 12 in.
mid grayed blue



51906 12 in. x 12 in.
teal



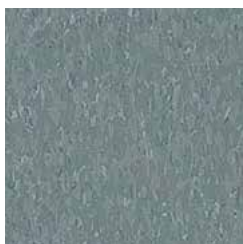
51884 12 in. x 12 in.
greenery



51877 12 in. x 12 in.
earth green



51874 12 in. x 12 in.
grayed blue



51802 12 in. x 12 in.
silver green



51947 12 in. x 12 in.
basil green



59233 12 in. x 12 in.
spring leaf



Standard Excelon® Imperial® Texture
51803 pearl white; 51804 earthstone greige;
51868 smokey brown

PREMIUM EXCELON® | STANDARD EXCELON® Vinyl Composition Tile

Adhesives and Installation

Armstrong Flooring has everything you need to install a floor and take care of it. We also supply the tools and cleaning supplies required to install and take care of your beautiful, durable high-performance floor. Our variety of adhesives, seaming and installation options, backed by the Armstrong Flooring Guaranteed Installation System, along with our portfolio of products, help create a flooring package that gives you a great warranty, backed by the most trusted, reliable name in flooring.





S-515 Floor Tile Adhesive
High-Moisture: 90% RH, 7lbs. MVER 

- High moisture guarantee
- Can also be used over cutback adhesive residue
- Dries clear to easily see chalk lines

Open time: 30+ minutes
Working time: 24 hours
Spread rate: 285–335 sq. ft./gal.
Trowel: fine notch

Options: 1 quart, 1 gallon, 4 gallon



S-525 Bio-flooring Adhesive
High-Moisture: 90% RH, 7lbs. MVER 

- High moisture guarantee
- Can also be used over cutback adhesive residue
- Water-resistant when fully cured

Open time: Minimum of 20 minutes or until dry-to-touch
Working time: 24 hours
Spread rate: 275–325 sq. ft./gal.
Trowel: fine notch

Options: 1 gallon, 4 gallon



S-700 Floor Tile Adhesive Thin Spread
Standard: 80% RH, 5lbs. MVER

- Black asphalt adhesive
- Can also be used over cutback adhesive residue
- Can be used over metal subfloors

Open time: 30+ minutes
Working time: 18 hours
Spread rate: 350–400 sq. ft./gal.
Trowel: fine notch

Options: 1 gallon, 4 gallon



S-750 Premium Floor Tile Adhesive
Premium: 80% RH, 5lbs. MVER

- Strong initial grab
- Can also be used over cutback adhesive residue
- Can be used as a primer

Open time: 30+ minutes
Working time: 6 hours
Spread rate: 275–350 sq. ft./gal.
Trowel: fine notch

Options: 1 gallon, 4 gallon



Flip® Spray Adhesive
High-Moisture: 93% RH 

- High-moisture guarantee
- Warranted for heavy rolling loads
- Simple one-step application process

Open time: varies depending on adhesive coverage
Working time: should not exceed 4 hours
Spread rate: 140–170 sq. ft./bottle

Options: 22 oz. bottle

ADHESIVE OPTIONS (Depends on Substrate)			MOISTURE LIMITS		pH Readings
Wood, Concrete, Ceramic, Terrazzo, Marble	Metal	Existing Resilient Floor	MVER Calcium Chloride Test (lbs./1000 sq. ft./24 hrs.)	Relative Humidity In-Situ Probe	
S-515, S-525 High Moisture, S-700, S-750 or Flip® Spray Adhesive	S-700 or Flip® Spray Adhesive	S-515, S-525 High Moisture, S-750 Tile-On System or Flip® Spray Adhesive	5; 7 when using S-515 or S-525	93% – Flip® Spray Adhesive 90% – S-515 & S-525 80% – S-750 & S-700	5-9; 5-11 – Flip® Spray Adhesive, S-515 or S-525

MAINTENANCE OPTIONS				ARMSTRONG FLOOR CARE PRODUCTS		
Low Maintenance/No Polish Option		Traditional		Cleaners	Sealers	Polishes
Spray Buff	Dry Buff	No Buff	Polish	S-485	S-495	S-480
			✓			

PREMIUM EXCELON® | STANDARD EXCELON® Vinyl Composition Tile

Maintenance



S-485 Commercial Floor Cleaner

- Neutral floor cleaner at normal dilution, 8.5 pH
- High efficiency allows dilution to as low as 64:1
- Low foaming formula is great for automatic floor machines, damp-mopping, and/or moderate to heavy scrubbing
- Won't strip polish
- Pleasant fragrance
- Contains no phosphates

Spread Rate: Cleaners and strippers do not have a spread rate, dilute according to instructions for proper pH level

Options: 1 gallon (4 gal./ctn.), 5 gallon



S-495 Commercial Floor Sealer

- Stain-resistant sealer for porous or well-worn floor surfaces
- Provides an excellent base for S-480 or other commercial floor polishes
- High durability for long lasting protection
- Water-based acrylic emulsion, 7.8 pH
- 16% solids for easy application and excellent leveling
- Semi-permanent for resistance to conventional polish stripping

Spread Rate: 1500–2000 sq. ft. per gallon per coat

Options: 1 gallon (4 gal./ctn.), 5 gallon



S-480 Commercial Floor Polish

- Meets the ASTM D2047 standard for slip-resistance on dry floors
- High durability for long-lasting protection
- Dries bright for areas where buffing is not applicable or desired
- Metal cross-linked acrylic copolymer emulsion polish, 8.5 - 8.75 pH
- 18% solids for easy application and excellent leveling

Spread Rate: 1500 - 2000 sq. ft. gallon per coat

depending on the surface characteristics of the floor

Application: Excellent buffing response for spray-buffing repairs or high-speed burnishing programs (up to 2,000 rpm)

Options: 1 gallon (4 gal./ctn.), 5 gallon



Premium Excelon® ChromaSpin™
54822 caminelle; 54826 windsor blue

Premium Excelon® Raffia™
55800 snowdrift

VINYL COMPOSITION TILE

PREMIUM EXCELON® | STANDARD EXCELON®

Material

Composed of 85% limestone in a polyvinyl chloride binder with pigments. Color and pattern detail are dispersed uniformly throughout the thickness of the material. Color pigments are insoluble in water and resistant to cleaning agents and light.
ChromaSpin – Color detail is dispersed uniformly throughout the thickness of the material.

Size

- Raffia**
12 in. x 24 in. (305 mm x 610 mm)
- Crown Texture, ChromaSpin, Companion Square, Feature Tile, Rave, MultiColor, Imperial Texture**
12 in. x 12 in. (305 mm x 305 mm)
- Stonetex**
18 in. x 18 in. (457 mm x 457 mm),
12 in. x 12 in. (305 mm x 305 mm)
- Feature Strips**
2 in. x 24 in. (50.8 mm x 610 mm),
4 in. x 24 in. (101.6 mm x 610 mm),
6 in. x 24 in. (152.4 mm x 610 mm)

Gauge (nominal thickness)

- 1/8 in. (3.2 mm)
- 3/32 in. (2.4 mm) – Imperial Texture only

Limitations

- VCT should not be used in the following areas:
- Hospital operating rooms.
 - Heavy industrial and exterior areas.
 - Commercial kitchens and commercial food processing areas.
 - Where pointed spikes such as golf or track shoes will be used.

Suitable for Application Over

- Concrete, terrazzo, and other dry, structurally sound monolithic subfloors, which are suspended, on grade, or below grade.
- Suspended wood subfloor construction with approved wood underlayments, and a minimum of 18 in. (45.72 cm) well-ventilated air space below.
- Most metal floors and most existing single-layer resilient floors on approved underlayments.
- Radiant-heated subfloors with a maximum surface temperature of 85° F (29° C).

Unsuitable for Application Over

- Subfloors where excessive moisture or alkali is present.
- Sleeper-constructed wood subfloors, on grade or below grade.
- Lightweight aggregate concrete subfloors having a density of less than 90 lbs. per cu. ft. (1442 kg/m³) or cellular concrete having a plastic (wet) density less than 100 lbs. per cu. ft. (1602 kg/m³) [94 lbs. per cu. ft. (1506 kg/m³) dry weight], or concrete having a compressive strength of less than 3500 psi (24 MPa). Concrete slabs with heavy static and/or dynamic loads should have higher design strengths and densities calculated to accommodate such loads.

Concrete curing agents, sealers, hardeners or parting agents should be removed.

TECHNICAL DATA

Packaging

Size	Pieces/Ctn.	Sq. Ft./Ctn	Lbs./Ctn.
12 in. x 12 in.	45	45	63 (28.5 kg)
18 in. x 18 in.	20	30	64 (29 kg)
12 in. x 24 in.	22	44	61 (27.7 kg)
2 in. x 24 in.	24	8	11 (4.99 kg)
4 in. x 24 in.	100	66.7	88 (39.9 kg)
6 in. x 24 in.	50	50	68 (30.8 kg)

Gloss (typical value)

- Crown Texture** – 60 degrees specular: 9-18
- Raffia, ChromaSpin** – 60 degrees specular: 9-18
- Stonetex** – 60 degrees specular: 15-30
- Companion Square, Feature Tile, Feature Strips, Rave, MultiColor, Imperial Texture** – 60 degrees specular: 20-40

International Specifications

- Stonetex, MultiColor, Imperial Texture, Rave, Companion Square** – ASTM F 1066, Class 2 through pattern, ISO 10595, Type II
- Feature Tile & Strips** – ASTM F 1066, Class 1 solid color, ISO 10595, Type I

Static Load Limit

- ASTM F 970
- 125 lbs./sq. in. (8.79 kg/cm²)
- NOTE:** Floors should be protected from sharp-point loads and heavy static loads. High-heeled traffic (1000 psi (70.3 kg/cm²) or more) may visibly damage wood, resilient and other floor coverings. For questions regarding product suitability and detailed instructions for floor preparation and installation in these applications, please contact Armstrong Flooring.

Fire Test Data

- ASTM E 648 Flooring Radiant Panel Critical Radiant Flux – 0.45 watts/cm² or more – Class I
- ASTM E 662 Smoke Chamber Specific Optical Smoke Density – 450 or less
- CAN/ULC S102.2 Surface Burning Characteristics of Flooring, Floor Covering and Miscellaneous Materials and Assemblies.
- Flame Spread Rating – 0 / Smoke Developed Classification – 30**

INSTALLATION

Job Conditions

Subfloors/underlayments shall be dry, clean and smooth. They shall be free from paint, varnish, solvents, wax, oil, existing adhesive residue, or other foreign matter.

Spray paints, permanent markers and other indelible ink markers must not be used to write on the back of the flooring material or used to mark the concrete slab as they could bleed through, telegraphing up to the surface and permanently staining the flooring material. If these contaminants are present on the substrate, they must be mechanically removed prior to the installation of the flooring material.

For more detailed requirements of concrete, wood and metal subfloors, as well as wood and trowelable underlayments, refer to the Armstrong® Guaranteed Installation Systems manual, F-5061, or to the installation instructions at ArmstrongFlooring.com.

Moisture testing must be performed on all concrete slabs regardless of their age or grade level including areas where resilient flooring has already been installed. Moisture Vapor Emission Rate (MVER) using Calcium Chloride (ASTM F 1869) and/or percent relative humidity (ASTM F 2170) tests must be conducted. Following are the Armstrong Flooring maximum allowable moisture limits:

- When using Flip® Spray Adhesive, moisture test results shall not exceed 93% RH per ASTM F 2170.
- When using S-515 and S-525 Adhesives, moisture test results shall not exceed a MVER of 7.0 lbs./1000 sq. ft./24 hours per ASTM F 1869 and/or 90% RH per ASTM F 2170.
- When using S-700 or S-750 Adhesives, moisture test results shall not exceed a MVER of 5.0 lbs./1000 sq. ft./24 hours per ASTM F 1869 and/or 80% RH per ASTM F 2170.

On installations where both the Moisture Vapor Emission Rate and percent internal relative humidity tests are conducted, results for both tests shall comply with the allowable limits listed above.

Before installation, concrete floors should also be tested for pH following procedures in ASTM F 710. When testing for pH, the allowable readings for the installation of Armstrong flooring are 5-11 when using S-515, S-525 or Flip® Spray Adhesive and 5-9 when using S-700 or S-750.

Bond Test should also be conducted for compatibility with the substrate.

Temperature shall be maintained at a minimum of 65° F (18° C) and a maximum of 100° F (38° C) for 48 hours prior to installation, during installation and 48 hours after completion. A minimum temperature of 55° F (13° C) shall be maintained thereafter. Condition all flooring materials and adhesives to room temperature at least 48 hours prior to starting installation. Protect all materials from the direct flow of heat from hot-air registers, radiators, or other heating fixtures and appliances.

Visit ArmstrongFlooring.com for installation instructions.

Adhesive Options

Subfloor	Wood Underlayment	Concrete	Ceramic, Marble, Terrazzo	Metal	Existing Resilient Floor
Adhesive	S-515	S-515	S-515	S-700	S-515 S-525 S-750 Tile-On System
	S-525	S-525	S-525		
	S-700	S-700	S-700		
	S-750	S-750	S-750		

MAINTENANCE

VCT is designed to be maintained by traditional resilient flooring maintenance methods, which include the use of polishes, spray-buffing techniques and appropriate high-speed maintenance systems.

Initial Maintenance Immediately Following Installation:

- Sweep or vacuum thoroughly.
- Damp mop with a properly diluted neutral detergent solution such as Armstrong S-485 Floor Cleaner – carefully wiping up black marks and excessive soil.
- Apply two coats of high quality commercial floor polish such as Armstrong S-480.
- Do not wash, scrub or strip the floor for at least four days after installation.

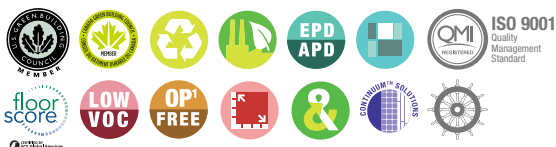
For specific, ongoing maintenance procedures visit ArmstrongFlooring.com

LIMITED WARRANTY

Armstrong warrants its regular (first quality) commercial resilient floors and wall base to be free from manufacturing defects for five years from the date of purchase. Armstrong also warrants the installation integrity of its commercial floor for five years from the date of purchase, if installed according to the installation and maintenance instructions at ArmstrongFlooring.com. This warranty extends only to the original end user. See Armstrong Commercial Floor Warranty, F-3349 or visit ArmstrongFlooring.com for warranty details, limitations and exclusions.

WARNING: EXISTING IN-PLACE RESILIENT FLOOR COVERING AND ASPHALTIC ADHESIVES. DO NOT SAND, DRY SWEEP, DRY SCRAPE, DRILL, SAW, BEADBLAST, OR MECHANICALLY CHIP OR PULVERIZE EXISTING RESILIENT FLOORING, BACKING, LINING FELT, ASPHALTIC "CUTBACK" ADHESIVE, OR OTHER ADHESIVE.

ArmstrongFlooring.com/commercial | 1 888 276 7876



Refer to the 2016 Product Guide (FP7440F4249) for a quick reference on the product performance, design and sustainability icons. | *Exception Recycled Content

FP7440F6884-317
Printed in United States of America
© 2017 AFI Licensing LLC

Armstrong® and Armstrong Logo are trademarks of AFI Licensing LLC. FloorScore® is a registered trademark of the Resilient Floor Covering Institute. LEED® is a registered trademark of the United States Green Building Council. All other marks are trademarks of Armstrong Flooring, Inc., or its subsidiaries.