

# Installation in Four Easy Steps



## TILE & STONE INSTALLATION

Select products eligible  
for a lifetime warranty.



# 1 Prep

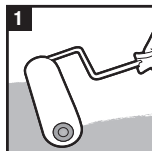
## Preparing your surface

A great tile project starts with a smooth, clean, solid, and level surface. Laying this groundwork may be your most important step—and we've got just the tools you need.



### RedGard® Waterproofing and Crack Prevention Membrane

	Size	Coverage
For Crack Prevention and Waterproofing	1 gal.	30–40 sq. ft.



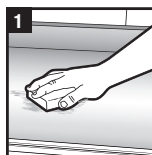
Roll on **RedGard**.

## For Wood Floors & Countertops

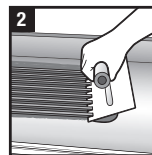


### 1/4" WonderBoard® Lite Backerboard

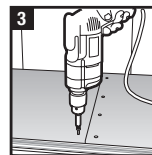
	Size	Coverage
	36" x 60" x 1/4"	15 sq. ft.



For countertops only—clean then lightly sand.



Apply **FlexBond** to floor or countertop.

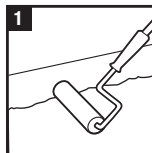


Fasten **WonderBoard® Lite**. Fill gaps with **FlexBond**, embed mesh tape, smooth with trowel.

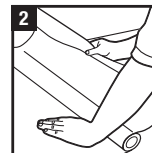


### EasyMat® Tile & Stone Underlayment

	Size	Coverage
	48" x 10' x 5 mm	40 sq. ft.



Apply primer.



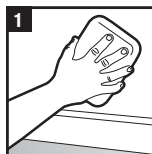
Roll out **EasyMat**.

## For Walls & Showers

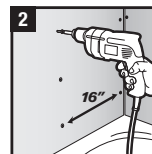


### 7/16" WonderBoard® Lite Backerboard

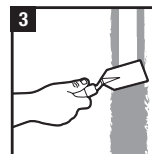
	Size	Coverage
	36" x 60" x 7/16"	15 sq. ft.



For bathtub walls, staple roofing felt. For walls in dry areas, clean wall.



Fasten **WonderBoard® Lite** to studs.



Fill gaps with **FlexBond**, embed mesh tape, smooth with trowel.

## Basic Tools for Surface Prep

Notch Trowel

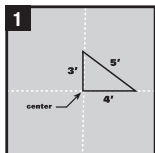
Knee Pads

Scoring Knife

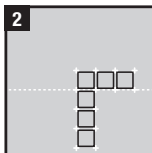
Backerboard Screws

# Measuring, laying out & cutting the tile

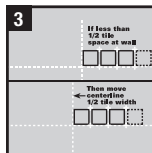
## For Floors



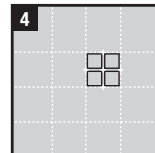
Mark centerlines of the floor. Use a 3-4-5 triangle to check for square.



Do a dry run to determine tile placement and cuts. Place a row of tiles along each line using spacers.

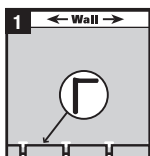


If the space at the wall is less than 1/2 tile, shift centerline to eliminate small cuts. This will allow wider tiles at both walls.

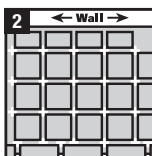


Work in chalked grids (typically 2 tiles by 2 tiles), allowing space for grout joints.

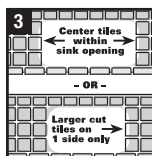
## For Countertops



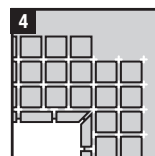
Begin layout by positioning the front edge tiles (bullnose or v-cap) along the front of the countertop.



Do a dry run by placing as many full tiles on the countertop with spacers as necessary. If the countertop abuts a wall, lay cut tiles against the wall.

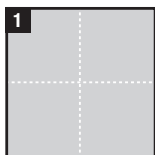


For straight countertops, mark centerline of the countertop or sink, then lay tiles so cut pieces behind sink are the same width. Avoid less than half-width cut tiles by shifting the layout 1/2 tile left or right.

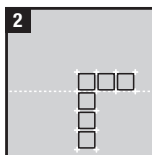


For L-shaped countertops, lay full tiles at inside corner. Set bullnose or v-cap pieces in place to ensure correct amount of overhanging pieces.

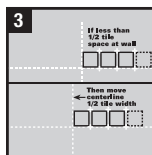
## For Walls & Showers



Mark centerlines of the wall with a china marker.

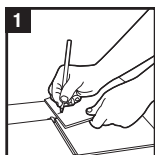


To determine tile spacing and cuts, lay it out on the floor first, placing a row of tiles along each line using spacers. Then replicate the measurements on the wall.

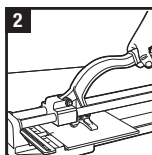


If the space at the wall is less than 1/2 tile, shift centerline to eliminate small cuts. This will allow wide, even tiles at both edges.

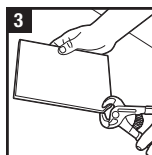
## For Cutting Tile



After setting your full tiles, go back to set tiles requiring cuts. Mark cuts with a grease pencil or china marker.



Make straight cuts using tile cutter or wet saw. Notched or curved cuts and v-cap or quarter round tile cuts require a wet saw.



For unique shaping, use tile nippers to cut away small pieces of tile.

## Basic Tools for Cutting Tile

Wet Saws

Tile Cutters

Tile Nippers

Hole Saw

# ② Set

## Setting your stone or tile

Different tile types need to be bonded to your surface with just the right kind of mortar. We can help you choose the materials for a project that will be beautiful for years to come.

### For Porcelain & Ceramic Tile

#### FlexBond® Crack Prevention Mortar



Size	Notch Trowel Size	Coverage Per Bag
< 8"	1/4" x 1/4" x 1/4"	90 sq. ft.
8"–12"	1/4" x 3/8" x 1/4"	60 sq. ft.
12"+	1/2" x 1/2" x 1/2"	45 sq. ft.

All CUSTOM® thin-set mortars provide approximately the same coverage per 50 lb. bag.

### For Stone

#### Marble, Granite & Travertine Premium Medium Bed Mortar



Size	Notch Trowel Size	Coverage Per Bag
< 8"	1/4" x 1/4" x 1/4"	90 sq. ft.
8"–12"	1/4" x 3/8" x 1/4"	60 sq. ft.
12"+	1/2" x 1/2" x 1/2"	45 sq. ft.

All CUSTOM® thin-set mortars provide approximately the same coverage per 50 lb. bag.

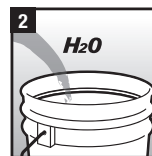
### Basic Tools for Setting

- Notch Trowel   
  Margin Trowel   
  Tile Nippers   
  Tile Spacers   
  Grout Sponge

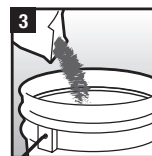
### Setting the Stone or Tile



Clean surface of contaminants.



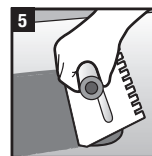
Add cool water.



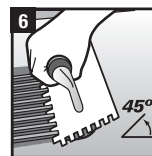
Add mortar.



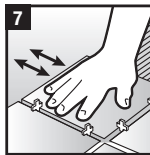
Mix 5 minutes.



Spread mortar on surface.



Apply mortar 10 sq. ft. at a time.



Set tile into place.



Wipe with damp sponge.



Wait 24 hours before using surface.

### Side Note

Use white thin-set mortars with white or translucent tile or light colored grout. Otherwise, use gray thin-set mortars.

# 3 Grout

## Grouting your stone or tile

The material between the joints and borders of your tiles is just as important to your project's final look. We offer a wide range of colored grout and long-lasting caulk so you can create a seamless floor or wall treatment.

### Fusion Grout

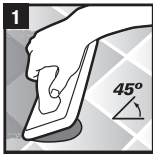


**Fusion Pro™  
Single Component Grout™**

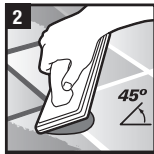
MIN  
**1/16" - 1/2"**  
MAX

The World's first Single Component Grout. Combines the Best Benefits of Cement and Epoxy grouts.

- Unsurpassed stain resistance
- No sealing required
- Contains Microban® to inhibit mold and mildew growth



Apply grout with float.



Spread grout evenly and cleanly at a 45 degree angle.



After 2-4 minutes; using a LIGHT TOUCH with a grout sponge, shape and smooth grout joints. Rinse sponge and cleanwipe residue from face of tile.



While still wet, use a DAMP microfiber towel or microfiber sponge to remove any leftover haze from the sponge cleaning.



Wait 24 hours before using surface.

### For Grout Joints 1/8"-1/2"



**Polyblend® Sanded Grout**

MIN  
**1/8" - 1/2"**  
MAX

### For Grout Joints 1/8" Max



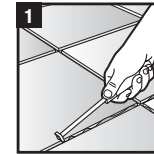
**Polyblend® Non-Sanded Grout**

MAX  
**1/8"**

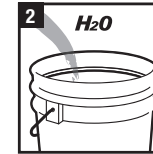
Project Size	Tile Size	Polyblend® Sanded Number of 25 lb. Bags Needed	Polyblend® Non-Sanded Number of 10 lb. Boxes Needed	Fusion Pro™ Number of 1 gallon Units Needed
50 sq. ft.	< 10"	1	1	1
100 sq. ft.	< 6"	1	2	2
	6"-24"	1	1	2
200 sq. ft.	< 8"	2	2	2
	10"-16"	2	2	2
	18"-24"	1	1	1

Coverage applicable for grout joint widths 1/8" to 1/4" for Sanded Grout; 1/16" to 1/8" for Non-Sanded Grout; 1/16" to 1/2" for Fusion Pro Grout. Amounts rounded to ensure proper coverage.

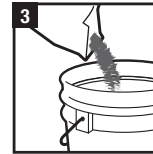
### Grouting the Tile Joints



Clean grout joints.



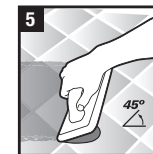
Add cool water.



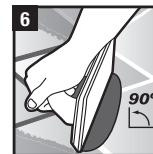
Add grout.



Mix 5 minutes.



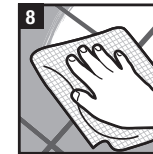
Apply grout with float.



Remove excess grout from surface.



Wait for firm joints. Lightly clean off excess grout with sponge. Caution: Do NOT over water.



Remove haze with cheesecloth.



Wait 16 hours before using surface.

### Selection

Choose from 8 colors of Fusion Pro Single Component Grout and 29 colors of Polyblend Grout to complement your installation.

### Basic Tools for Grouting

- Grout Float     Margin Trowel     Grout Sponge     Microfiber Towel     Cheesecloth

## ④ Care

Now that you've got the look you love, make sure it lasts. Sealing your stone, tile and grout protects the surface from water-based and oil-based stains.

### Sealing

---



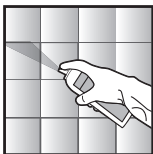
**SurfaceGard®  
Sealer**



Protect your stone,  
tile and grout.



**Grout Sealer**



Penetrates grout to  
protect against stains.



Look for this icon on  
products that qualify for a  
**Lifetime Warranty**

Busca este icono en productos que califican  
para una **Garantía de por vida**



**More choices, more how-to  
at [homedepot.com](http://homedepot.com)**