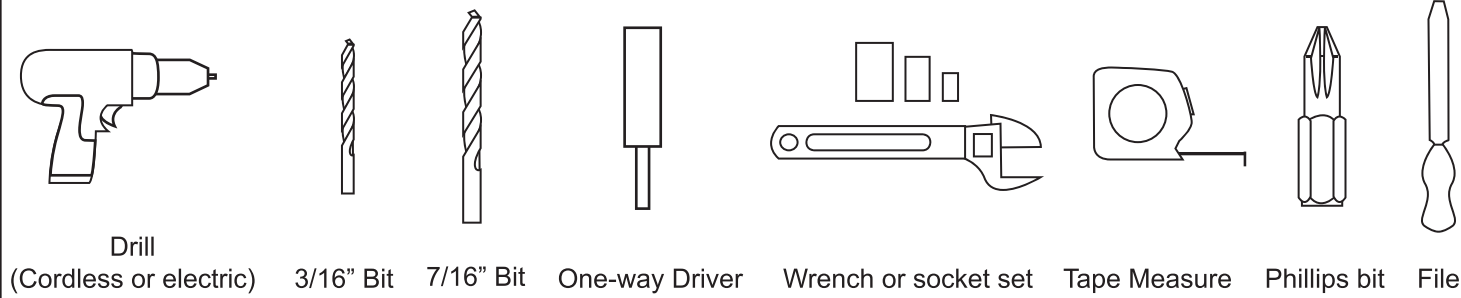


Foot Operated Release Kit

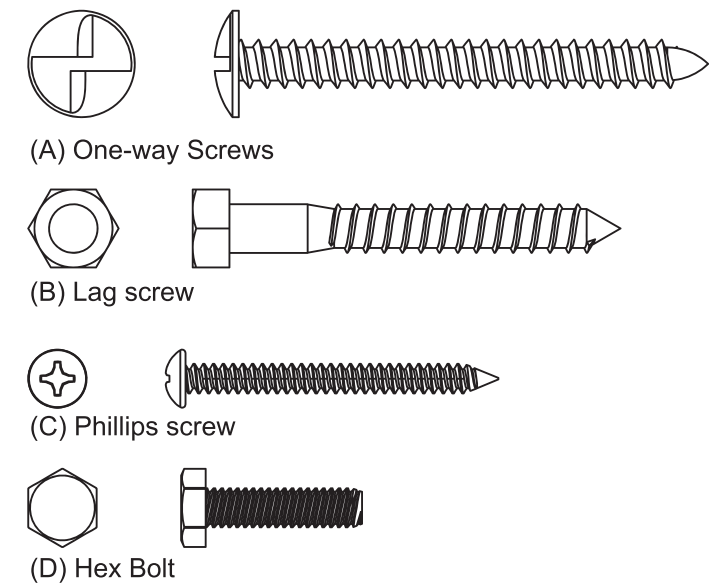
Installation Instructions



Tool List



Fastener List



2

Position window guard to be centered with the window opening. Take care to center and level window guard with window opening. Position hinges by pulling in and out of window guard frame so holes are centered with framework of home around the window opening.

A

Center on 2 x 4 stud.

B

Make sure guard stays centered and even all around the opening. Mark center of hinge holes with pencil and place window guard to the side.

C

Pre-drill holes using a 3/16" drill bit.

D

Place window guard back up, lining up hinge holes with the pre-drilled holes. Secure hinges with one-way screws (A).

3

Close and level window guard.

A

Center bullets on 2 x 4 and mark.

B

Measure 5/8" above bullet marks and make another mark. Using a 7/16" drill bit, drill through the wall.

IMPORTANT: TO INSURE PROPER RELEASE OPERATION AN ACCURATE ALIGNMENT BETWEEN LOCK BODY AND LOCK BULLET MUST BE MADE.

4

Using a 7/16" drill bit, and angling the drill, round off the bottom of the hole on the inside of the house.

Exterior Wall

7/16" hole

2 x 4 stud

Interior Wall

6

Align stand-off on interior wall with lock body that is on the outer wall and with the cables that have been fed through the wall. Pre-drill both holes at this time using a 3/16" drill bit. This will make is easier to install the second screw in step 8.

A

Mount cable clamp stand-off.

B

Use only one lag screw (B) in the top of the stand-off at this time.

C

Same stud used by lock bodies.

Approx. 6" above floor

Interior Wall

8

A

Fasten cables to stand-off with cable clamp. Caution: Do not pinch cables.

B

Remove slack from cables. Cut cables equally approx. 4" below cable shield.

C

Feed cables through holes at top of pedal and under clamp on backside.

D

To assemble hinge, insert offset bracket into slot of pedal and mount with a lag screw (B) through the bottom hole of the stand-off.

E

Raise pedal to highest position and tighten hex nut (D) on back of pedal.

5

A

Install lock bodies on bullets and feed cables through wall.

IMPORTANT: USE LONG CABLES FOR UPPER LATCH, USE SHORT CABLE FOR LOWER LATCH.

B

Close guard, inserting post on backside of lock body into 7/16" hole.

C

With window guard and lock body in place, pre-drill holes with 3/16" drill bit.

D

Secure lock bodies with one-way screws (A).

Caution: Do not kink cables.

7

A

Install aluminum covers with Phillips screws provided (C).

B

Hold cables next to stand-off and mark with file. mark cable shields approx. 1/4" below stand-off.

CUT CABLE SHIELD ONLY. BE CAREFUL NOT TO DAMAGE CABLE. USE FILE TO CUT SHIELD COIL. REMOVE EXCESS SHIELD.

9

TEST THE RELEASE MECHANISM SEVERAL TIMES TO INSURE PROPER OPERATION.

THE GUARD SHOULD SPRING FREE OF OPENING UPON ACTUATION AND CLOSE EASILY.

DO NOT SLAM GUARD TO CLOSE.

KICK TO RELEASE

VIEW INSTALLATION VIDEOS AT helpmeininstallit.com