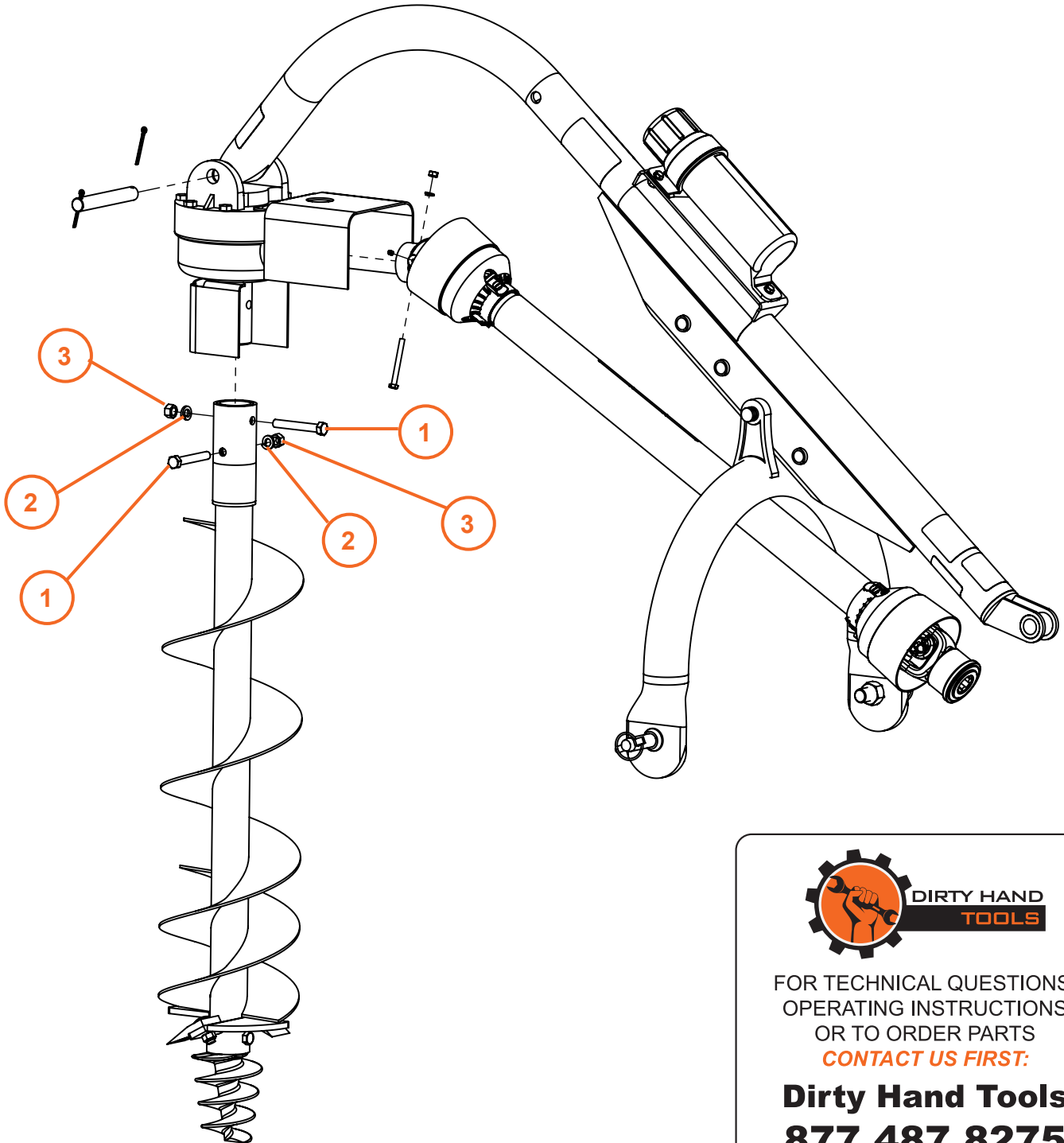




**DIRTY HAND
TOOLS**

Auger to Post Hole Digger Assembly

Attach the auger to the output shaft on the bottom of the gear box using 1/2 in. hex cap screws ①, 1/2 in. lock washers ② and 1/2 in. hex nuts ③ provided.



**DIRTY HAND
TOOLS**

FOR TECHNICAL QUESTIONS,
OPERATING INSTRUCTIONS
OR TO ORDER PARTS

CONTACT US FIRST:

Dirty Hand Tools
877.487.8275

www.dirtyhandtools.com

101058