



# BEL AIR LIGHTING

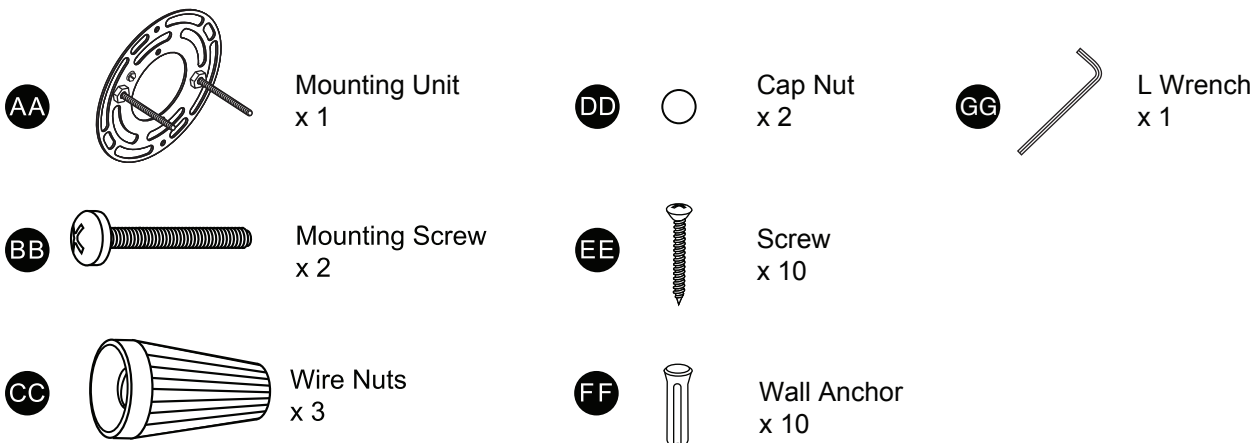
## 3-Light Vanity with 4-piece Bathroom Set

ITEM #304262208  
MODEL #DC-C2002

### PACKAGE CONTENTS



### HARDWARE INCLUDED Note: Hardware not shown actual size.



## ⚠ SAFETY INFORMATION

Consult a qualified electrician if you have any electrical questions.

### WARNING

- Before starting installation of this fixture or removal of a previous fixture, disconnect the power by turning off the circuit breaker or by removing the fuse at the fuse box.

### CAUTION

- Inspect the wire insulation for any cuts, abrasions, or exposed copper that may have resulted during shipping. If there is a defect in the wire, do not attempt installation

## PRE-INSTALLATION

- Read all instructions before installation.
- To avoid damaging this product, assemble it on a soft, non-abrasive surface, such as carpet or cardboard.
- Keep your receipt and these instructions for proof of purchase.



Ladder



Safety glasses



Electrical tape



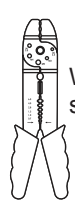
Phillips screwdriver



Flat blade screwdriver



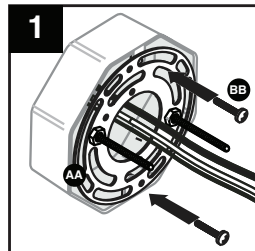
Pliers



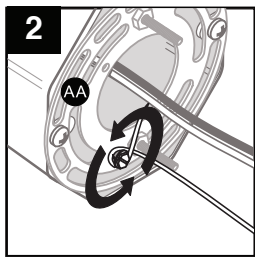
Wire strippers

## ASSEMBLY INSTRUCTIONS - LIGHT FIXTURE (A)

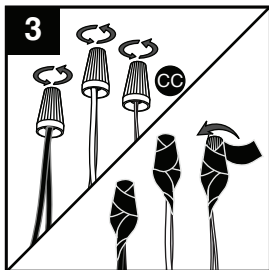
1. Attach the mounting unit (AA) to the junction box (not included) with mounting screws (BB).



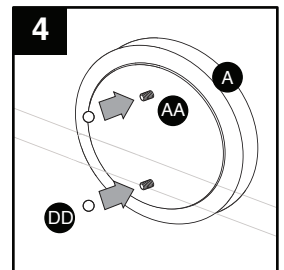
2. Connect the ground wire to the mounting unit (AA) by securing it with the ground screw.



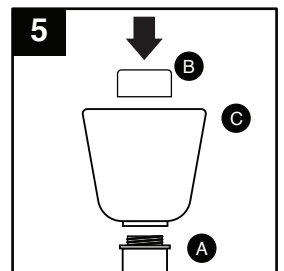
3. Connect the black to black (power), the white to white (neutral) and copper wire to ground wire with the wire nuts (CC) and secure with electrical tape (not included).  
Helpful Hint: If wires out of fixture are the same color, attach the side with markings or letters to black (positive) and the other to white (neutral).



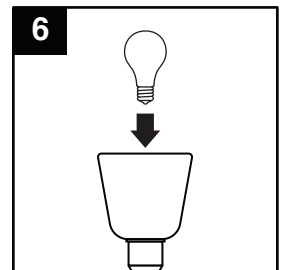
4. Secure the light fixture (A) to the junction box by placing it over the pre-installed support screws on the mounting unit (AA) and securing it with the cap nuts (DD).



5. Install the glass shade (C) to light fixture (A) and secure with socket ring (B).

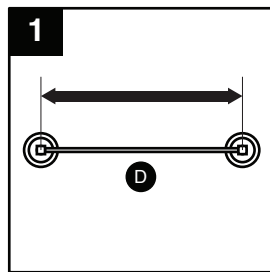


6. Install 3 x Medium Base 60 Watt max. bulb, not included.

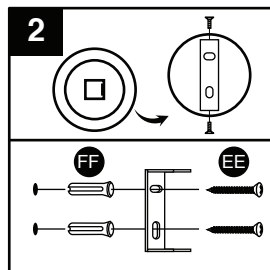


## ASSEMBLY INSTRUCTIONS - TOWEL BAR (D)

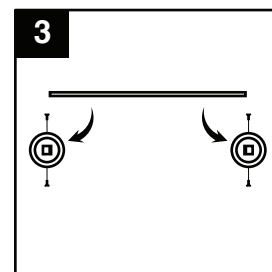
1. Note the distance between the two bases of the towel bar (D) before beginning installation.



2. Unscrew the two pre-installed screws from the base and remove the bracket. Drill two holes for the base making them slightly smaller than the wall anchors (FF). Match the placement of the slots on bracket. Insert the wall anchors (FF) and tap into the wall until secure, then insert the screws (EE) over the bracket into the wall anchors (FF).

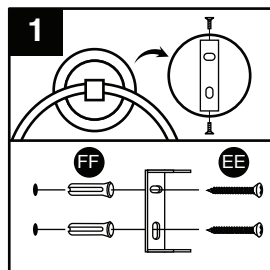


3. Install the two bases to the secured brackets using the previously removed screws then insert the bar into the two bases.

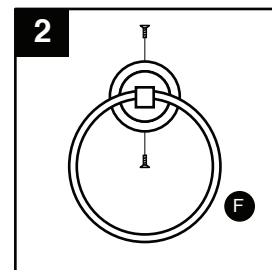


## ASSEMBLY INSTRUCTIONS - TOWEL RING (F)

1. Unscrew the two pre-installed screws from the base and remove the bracket. Drill two holes for the base making them slightly smaller than the wall anchors (FF). Match the placement of the slots on bracket. Insert the wall anchors (FF) and tap into the wall until secure, then insert the screws (EE) over the bracket into the wall anchors (FF).

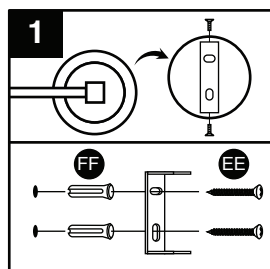


2. Install the base of the towel ring (F) to the secured bracket using the previously removed screws. Note: The towel ring is removable.

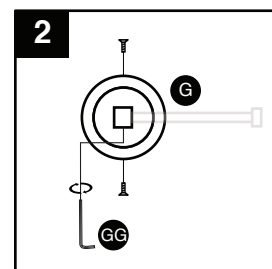


## ASSEMBLY INSTRUCTIONS - TISSUE HOLDER (G)

1. Unscrew the two pre-installed screws from the base and remove the bracket. Drill two holes for the base making them slightly smaller than the wall anchors (FF). Match the placement of the slots on bracket. Insert the wall anchors (FF) and tap into the wall until secure, then insert the screws (EE) over the bracket into the wall anchors (FF).

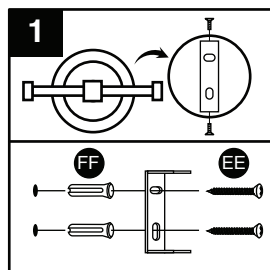


2. Install the base of the tissue holder (G) to the secured bracket using the previously removed screws. Note: The hook can be secured in place or loosened using the provided L wrench (GG).

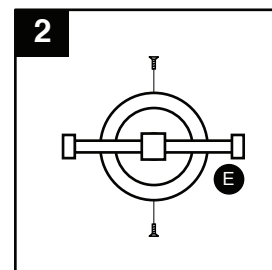


## ASSEMBLY INSTRUCTIONS - ROBE HOOK (E)

1. Unscrew the two pre-installed screws from the base and remove the bracket. Drill two holes for the base making them slightly smaller than the wall anchors (FF). Match the placement of the slots on bracket. Insert the wall anchors (FF) and tap into the wall until secure, then insert the screws (EE) over the bracket into the wall anchors (FF). Note: Check the direction of the hook.



2. Install the base of the robe hook (E) to the secured bracket using the previously removed screws.



## CARE AND MAINTENANCE

- To clean, turn power off and wipe with a damp, non-abrasive cloth.

## TROUBLESHOOTING

PROBLEM	POSSIBLE CAUSE	SOLUTION
The bulb will not light.	The bulb is burned out.	Replace the light bulb.
	The power is off.	Ensure the power supply is On.
	There is a faulty wire connection.	Check the wiring.
	The circuit breaker is off.	Ensure the circuit breaker is in the On position.
The fuse blows or circuit breaker trips when the light is turned on.	There are crossed wires or the power wire is grounding out.	Check the wire connections. Contact a qualified electrician or call the Customer Service Team at 1-800-446-9092.

### WARRANTY

The manufacturer warrants this lighting fixture to be free from defects in materials and workmanship for a period of one (1) year from date of purchase. This warranty applies only to the original consumer purchaser and only to products used in normal use and service. If this product is found to be defective, the manufacturer's only obligation, and your exclusive remedy, is the repair or replacement of the product at the manufacturer's discretion, provided that the product has not been damaged through misuse, abuse, accident, modifications, alterations, neglect, or mishandling. This warranty shall not apply to any product that is found to have been improperly installed, set-up, or used in any way not in accordance with the instructions supplied with the product. This warranty shall not apply to a failure of the product as a result of an accident, misuse, abuse, negligence, alteration, faulty installation, or any other failure not relating to faulty material or workmanship. This warranty shall not apply to the finish on any portion of the product, such as surface and/or weathering, as this is considered normal wear and tear. The manufacturer does not warrant and specially disclaims any warranty, whether express or implied, of fitness for a particular purpose, other than the warranty contained herein. The manufacturer specifically disclaims any liability and shall not be liable for any consequential or incidental loss or damage, including but not limited to any labor / expense costs involved in the replacement or repair of said product.



#### Questions, problems, missing parts?

Before returning to your retailer, call our customer service at 1-800-446-9092, Monday - Friday 7:00 a.m.-5:00 p.m., PST