

**USG
Tile &
Flooring
Solutions**

**USG DUROCK™ BRAND
SHOWER SYSTEM**

**A SUPERIOR SHOWER SYSTEM
FROM A NAME YOU TRUST**

USG



IT'S YOUR WORLD. BUILD IT.™



CONFIDENCE BENEATH THE SURFACE

USG DUROCK™ BRAND ULTRALIGHT FOAM TILE BACKERBOARD

The USG Durock™ Brand UltraLight Foam Tile Backerboard offers tile contractors a strong, lightweight, waterproof and vapor-retardant tile base for tub, shower and steam room areas.

INSTALLATION BENEFITS:

- Rugged facer and backing on extruded foam core
- Fastens without washers
- Cuts easily with utility knife and dust free
- Suitable for continuous-use steam showers
- Ideal underlayment for tile on floors and countertops in new construction and remodeling
- Ideal for use with the USG Durock™ Brand Shower System



WATERPROOFING MEMBRANE

The USG Durock™ Brand Shower System waterproofing membrane is not only stronger than many competitors' membranes, but also noticeably thinner.



BENEFITS:

- Minimizes buildup at seams
- More pliable and easier to install
- Extremely tear resistant
- Extremely low permeability rating makes it ideal for wet areas, including continuous-use steam showers
- Several accessories are available for an integrated, waterproofing system

DRAIN ASSEMBLY

- Unique design simplifies installation
- Bonding flange features fleece on the top and bottom for a secure bond to the mortar that supports the drain assembly
- Accommodates 2" or 3" ABS or PVC waste lines
- Allows for solvent-weld and no-hub connections
- Adapter Kit available for use with existing plumbing

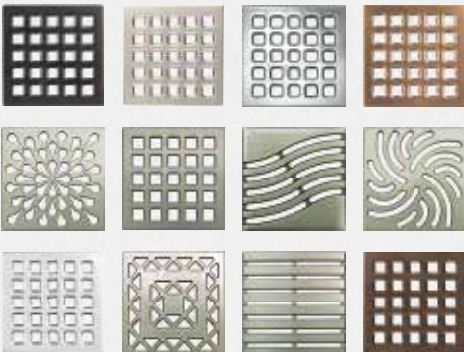
GRATE ASSEMBLY

- Can be adjusted vertically to match tile thicknesses ranging from 1/8" to 1"
- Provides up to 25% more horizontal adjustment when compared to the competition, to ensure perfect grate and tile alignment



DRAIN GRATES

- Choose from more than 50 design and finish options, from contemporary to classic
- Two sizes (4" and 5")
- Sleek, strong, long-lasting



PRE-SLOPED SHOWER TRAY

- Optimal 2% slope
- 1"-thick perimeter for easier construction of barrier-free showers
- Exceptionally strong, cuts easily with a knife and is dust free
- Four sizes:
 - 72" x 72" center drain
 - 48" x 48" center drain
 - 32" x 60" center drain
 - 32" x 60" offset drain



BUILD WITHOUT BARRIERS

With a 1"-thick perimeter, the pre-sloped shower tray allows easier construction of barrier-free showers without unwanted or unnecessary buildup of the surrounding subfloor.

In addition, the USG Durock™ Shower System also features ramps to help you achieve a clean and accessible entry for any shower. See durockshowersystem.com for more details.

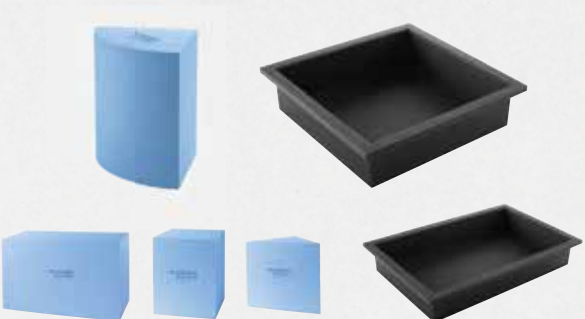
SHOWER TRAY DISK

Provides solid support under the drain, while featuring an integrated, removable subfloor cutout template and clock marks for easy grate alignment.



BENCHES AND NICHEs

In addition to the shower system kit, benches and niches allow you to create a more customized, enjoyable shower experience. Benches are available in rectangular, square and triangular shapes, while niches are available in both square and rectangular shapes.



USG DUROCK™ BRAND CUSTOM SHOWER TRAY PROGRAM

USG offers a program that helps you design and install near limitless configurations of shower shapes and sizes. The custom shower trays are made to order and work perfectly with the USG Durock™ Shower System.



Square



Neo Corner



L-Shaped



Rectangular



Round



D-Shaped

Learn more at durockshowersystem.com

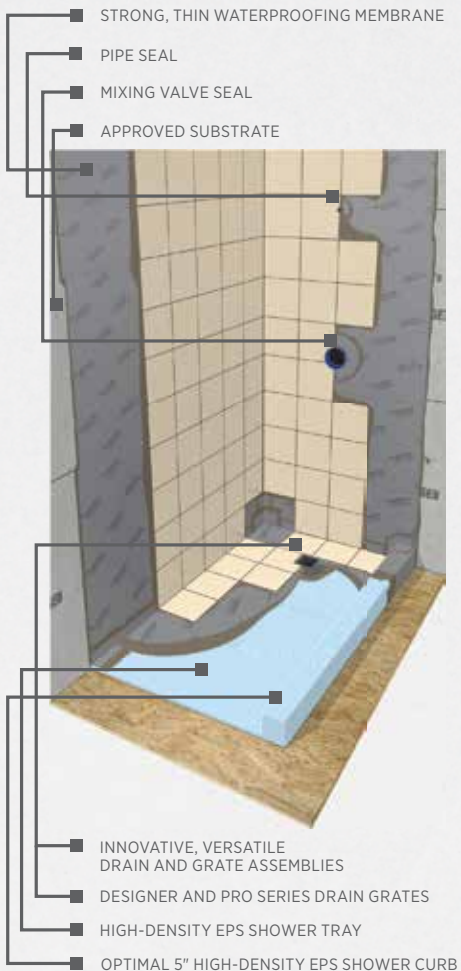
USG 
IT'S YOUR WORLD. BUILD IT.™

durockshowersystem.com

SMARTER DESIGN MEETS PEACE OF MIND

USG DUROCK™ BRAND SHOWER SYSTEM

The USG Durock™ Brand Shower System is a fully bonded waterproofing system for tiled shower installations, designed to control moisture independently of the tile covering, while creating a solid base for a long-lasting shower. And because it comes from a manufacturer with a reputation for delivering products and systems designed to outshine the competition, you can trust that it will deliver performance superior to other systems on the market.



SEE HOW USG STACKS UP AGAINST THE COMPETITION

| USG DUROCK™ BRAND SHOWER SYSTEM | LEADING COMPETITOR | BENEFIT |
|--|--|--|
| DRAIN AND GRATE ASSEMBLIES | | |
| Nonwoven fleece on top and bottom of bonding flange | Fleece only on top of flange | Fleece on the bottom provides the necessary bonding surface for the mortar that supports the drain assembly. |
| Square bonding flange | Round bonding flange | Greater horizontal adjustment for 4" and 5" drain grate assemblies versus competitors' 4" grate. Competitors' 6" grates have no horizontal adjustment. |
| Bushing design | No bushing design | Allows same drain body to be used for ABS or PVC waste lines and allows solvent-weld and no-hub connections to 2" and 3" waste lines. |
| Construction cover | No construction cover | Protects bonding flange during and after the installation and prevents debris from clogging the waste line during installation. |
| More than 50 Designer and Pro Series grates | Less than 10 grate options | Added freedom to bring your vision and creativity to life. |
| SHOWER TRAY | | |
| 2% slope | 2° slope | More comfortable surface to stand on when showering and accepts a wide variety of tile shapes and sizes. |
| 1" thickness at perimeter | 1 ½" thickness at perimeter | Easier barrier-free installation. |
| 3-pound density | 2.7-pound density | Superior support for tile covering and foot traffic. |
| 5" shower curb | 6" shower curb | Easier shower entry and exit, and more aesthetically pleasing. |
| Durable ABS plastic shower tray disk | None | Solid support under the drain. |
| WATERPROOFING MEMBRANE | | |
| 12-mil thick | 20-mil thick | Easier to handle with less buildup, while still stronger and more resistant to tearing. |
| <0.075 perm rating per ASTM E96, Procedure E | 0.90 perm rating per ASTM E96, Procedure E | Exceeds TCNA guidelines of 0.5 perms or less for continuous-use steam showers. |
| BENCHES | | |
| 3-pound density EPS | 2.75-pound density EPS | Added strength for confidence from the inside out. |
| Solid throughout | Hollow | Can be cut to virtually any size or shape to accommodate unique applications or job site conditions. |
| NICHES | | |
| ABS plastic with co-molded nonwoven fleece on flanges and interior surfaces | Foam | Outstanding strength for greater peace of mind. Superior thin-set mortar bond. |
| FOAM BOARD | | |
| Rugged thermoplastic facer and backing combined with an extruded foam core to achieve perm rating <0.1 per ASTM E96, Procedure E | Perm rating 0.36 | Lightweight, waterproof and vapor-retardant tile backerboard that fastens without washers. |

CB626/rev. 8-15

© 2015 USG Corporation and/or its affiliates. All rights reserved.

The trademarks USG, DUROCK, IT'S YOUR WORLD. BUILD IT., the USG logo, the design elements and colors, and related marks are trademarks of USG Corporation or its affiliates.



durockshowerssystem.com