

H3
3" Recessed Lighting

HALO



3" Ultra Compact
Housings and Trims

EATON

Powering Business Worldwide

H3 A new dimension in recessed lighting

Recessed lighting has always been popular for its ability to deliver effective lighting while maintaining an unobtrusive ceiling appearance. The H3 is designed for small aperture lamps in low voltage MR16 and line voltage GU10. The Halo H3 trims deliver effective illumination yet do not intrude on the main decorating elements in a space. The trims feature meticulous die-cast or machined detailing and they accommodate either low voltage or line voltage MR16 lamps depending on the housing used.

Finishes



White/Black Baffle



White/White Baffle



Black/Black Baffle



Tuscan Bronze



Satin Nickel

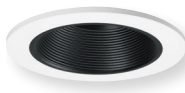


Polished Chrome

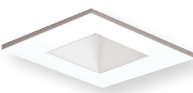
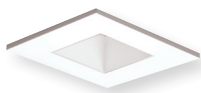


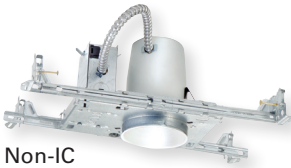
Frost (Glass)

Round Trims



Square Trims





Non-IC



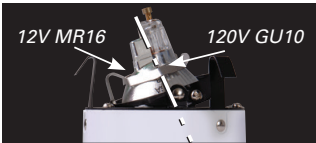
IC

H3 housings are offered in ten models designed for MR16 type lamps. Insulated Ceiling (IC) Air-Tite™, Non-IC Air-Tite™, low voltage (12V), line voltage (120V), new construction, remodel and commercial 277-volt. Housings have all the Halo contractor friendly features such as Got Nail™, Pass-N-Thru™ bar hangers and Slide-N-Side™ junction boxes that save installation time and money.



12V MR16

120V GU10



12V MR16

120V GU10

All H3 trims accept either 12V MR16 lamps or 120V GU10 lamps. Most trims allow lamp to tilt 15° to 35° for precise aiming. The 3010 Super-Adjustable allows 0° up to 80° tilt for aiming in even tight distances.



Locking screw on adjustable trims keeps aiming angle secure even during lamp replacements.



Die-cast adjustable gimbals with positive and negative aiming.



Precision machined baffles with solid die-cast rings.



Select wet location listed shower lights offered in die-cast or non-conductive and non-corrosive polymer trim rings with frosted glass edged lenses or regressed glass clear lenses.



H3 Housings



Non-IC

cutout: 3-3/4" [95mm]

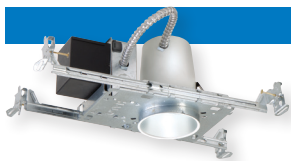
H x W x L: 5" x 5-1/4" x 8" [127mm x 133mm x 203mm]

H36TAT

Fits Halo Trim Models:

3001, 3002, 3003, 3004, 3006,
3007, 3008, 3009, 3010, 3011,
3012, 3013, 3017, 3020

120V 50W GU10



Non-IC

cutout: 3-3/4" [95mm]

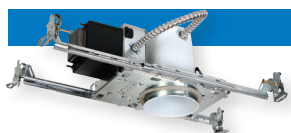
H x W x L: 5" x 5-1/4" x 10" [127mm x 133mm x 254mm]

H36LVTAT

Fits Halo Trim Models:

3001, 3002, 3003, 3004, 3006,
3007, 3008, 3009, 3010, 3011,
3012, 3013, 3017, 3020

12V 50W MR16



Non-IC

cutout: 3-3/4" [95mm]

H x W x L: 5" x 5-1/4" x 10" [127mm x 133mm x 254mm]

H36LVTAT277

Fits Halo Trim Models:

3001, 3002, 3003, 3004, 3006,
3007, 3008, 3009, 3010, 3011,
3012, 3013, 3017, 3020

12V 50W MR16



IC

cutout: 3-3/4" [95mm]

H x W x L: 7-1/4" x 9-1/8" x 12-3/4" [184mm x 231mm x 324mm]

H38ICAT

Fits Halo Trim Models:

3001, 3002, 3003, 3004, 3006,
3007, 3008, 3009, 3010, 3011,
3012, 3013, 3017, 3020

120V 50W GU10



IC

cutout: 3-3/4" [95mm]

H x W x L: 7-1/4" x 9-1/8" x 12-3/4" [184mm x 231mm x 324mm]

H38LVICAT

Fits Halo Trim Models:

3003, 3004, 3009, 3010, 3017	3001, 3002, 3006, 3007, 3008, 3011, 3012, 3013, 3020
------------------------------------	---

12V 50W MR16

12V 37W MR16



H36ICAT

Fits Halo Trim Models:

3001, 3002, 3003, 3004, 3006,
3007, 3008, 3009, 3010, 3011,
3012, 3013, 3017, 3020

IC

120V 50W GU10

cutout: 3-3/4" [95mm]

H x W x L: 5-1/4" x 13-1/2" x 13" [133mm x 343mm x 330mm]



H36LVICAT

Fits Halo Trim Models:

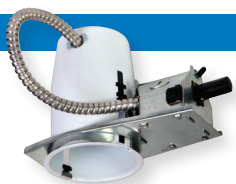
3001, 3002, 3003, 3004, 3006,
3007, 3008, 3009, 3010, 3011,
3012, 3013, 3017, 3020

IC

12V 50W MR16

cutout: 3-3/4" [95mm]

H x W x L: 5-1/4" x 13-1/2" x 13" [133mm x 343mm x 330mm]



H36RTAT

Fits Halo Trim Models:

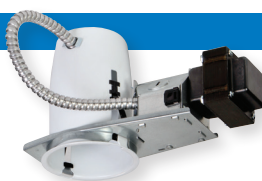
3001, 3002, 3003, 3004, 3006,
3007, 3008, 3009, 3010,
3011, 3012, 3013, 3017, 3020

Non-IC

120V 50W GU10

cutout: 3-3/4" [95mm]

H x W x L: 5" x 3-5/8" x 7-1/2" [127mm x 92mm x 190mm]



H36LVRTAT

Fits Halo Trim Models:

3001, 3002, 3003, 3004, 3006,
3007, 3008, 3009, 3010, 3011,
3012, 3013, 3017, 3020

Non-IC

12V 50W MR16

cutout: 3-3/4" [95mm]

H x W x L: 5" x 3-5/8" x 9-7/8" [127mm x 92mm x 251mm]



H36LVRTAT277

Fits Halo Trim Models:

3001, 3002, 3003, 3004, 3006,
3007, 3008, 3009, 3010,
3011, 3012, 3013, 3017, 3020

Non-IC

12V 50W MR16

cutout: 3-3/4" [95mm]

H x W x L: 5" x 3-5/8" x 9-7/8" [127mm x 92mm x 251mm]

H3 Trims



3001

Adjustable Pinhole Baffle

Finishes:

White (WHWB, WHBB),
Black (BKBB),
Satin Nickel (SNBB),
Tuscan Bronze (TBZBB)

O.D.: 4-1/4" [108mm]

I.D.: 1-3/4" [45mm]



3002

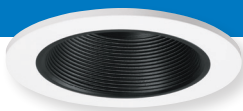
Adjustable Pinhole Clear Reflector

Finishes:

White (WHC)

O.D.: 4-1/4" [108mm]

I.D.: 1-3/4" [45mm]



3003

Adjustable Baffle

Finishes:

White (WHWB, WHBB),
Black (BKBB),
Satin Nickel (SNB),
Tuscan Bronze (TBZB)

O.D.: 4-1/4" [108mm]

Baffle I.D.: 3" [75mm]

I.D.: 2" [51mm]



3004

Adjustable Reflector

Finishes:

White (WHC),
Satin Nickel (SN),
Tuscan Bronze (TBZ)

O.D.: 4-1/4" [108mm]

Reflector I.D.: 3" [75mm]

I.D.: 2" [51mm]



3006

Adjustable Slot Aperture

Finishes:

White (WHBB),
Black (BKBB),
Satin Nickel (SNBB),
Tuscan Bronze (TBZBB)

O.D.: 4-1/4" [108mm]

I.D.: 1-1/4" x 2" [32mm x 51mm]



3007

Regressed Lens Showerlight

Finishes:

White (WHC),
Satin Nickel (SN),
Tuscan Bronze (TBZ),
Polished Chrome (PCC)

O.D.: 4-1/4" [108mm]

Reflector I.D.: 3" [75mm]

I.D.: 2" [51mm]



3008

Frosted Glass Showerlight

Finishes:

White (FG)

O.D.: 4-1/4" [108mm]

I.D.: 2-1/2" [64mm]





3009

Adjustable Gimbal

Finishes:
White (WHWB, WHBB),
Black (BKBB),
Satin Nickel (SNBB),
Tuscan Bronze (TBZBB)

O.D.: 4-1/4" [108mm]
Gimbal: 2-3/4" [70mm]
I.D.: 1-3/4" [45mm]

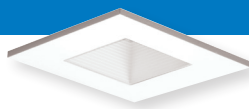


3010

Super-Adjustable

Finishes:
White (WH),
Satin Nickel (SN),
Tuscan Bronze (TBZ)

O.D.: 4-1/4" [108mm]
Gimbal: 2-1/2" [64mm]
I.D.: 1-3/4" [45mm]

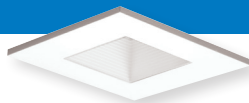


3011

Adjustable Square Baffle

Finishes:
White (WHBB, WHWB),
Black (BKBB),
Satin Nickel (SNBB),
Tuscan Bronze (TBZBB)

O.D.: 4-1/4" square [108mm]
Baffle I.D.: 2-1/4" [57mm]
I.D.: 2" [51mm]



3012

Adjustable Square Baffle Showerlight

Finishes:
White (WHBB, WHWB),
Black (BKBB), Satin Nickel (SNBB),
Tuscan Bronze (TBZBB)

O.D.: 4-1/4" square [108mm]
Baffle I.D.: 2-1/4" [57mm]
I.D.: 2" [51mm]



3013

Adjustable Square Gimbal

Finishes:
White (WH), Black (BK),
Satin Nickel (SN),
Tuscan Bronze (TBZ)

O.D.: 4-1/4" square [108mm]
Gimbal: 2-1/4" [57mm]
I.D.: 2" [51mm]



3017

Low Profile Glass Curve Showerlight

Finishes:
Frost (FGS)

O.D.: 4-1/4" [108mm]
I.D.: 1-5/8" [41mm]



3020

Wall Wash Downlight

Finishes:
White (WW)

O.D.: 4-1/4" [108mm]
I.D.: 1-3/4" [45mm]

Eaton

1121 Highway 74 South
Peachtree City, GA 30269
P: 770-486-4800
www.eaton.com/lighting

Canada Sales
5925 McLaughlin Road
Mississauga, Ontario L5R 1B8
P: 905-501-3000
F: 905-501-3172

Our Lighting Product Lines

Halo
Halo Commercial
Portfolio
IRiS
RSA
Metalux
Corelite
Neo-Ray
Fail-Safe
MWS
Ametrix
Shaper
io
Lumark
McGraw-Edison
Invue
Lumière
Streetworks
AtLite
Sure-Lites

Our Controls Product Lines

Greengate
iLumin
Zero 88
Fifth Light Technology
iLight (International Only)

Eaton

1121 Highway 74 South
Peachtree City, GA 30269
P: 770-486-4800
www.eaton.com/lighting

© 2015 Eaton
All Rights Reserved
Printed in USA
Publication No. BR518006EN
June 2015

Products, specifications and
compliances are subject to
change without notice.

Eaton is a registered trademark.

All other trademarks are property
of their respective owners.



Powering Business Worldwide