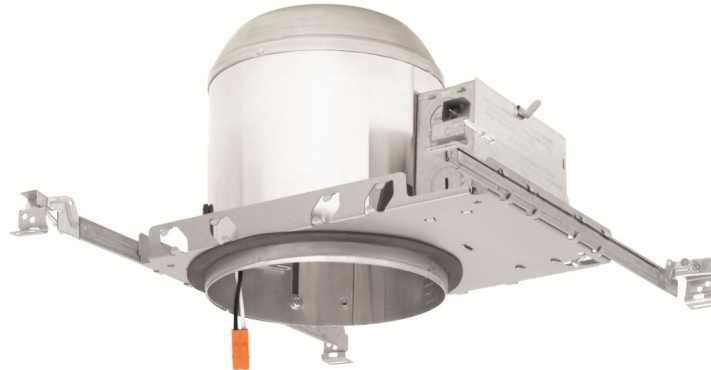




Project: Date:

Prepared by:

Comments:



FEATURES

MECHANICAL

- New Construction Applications
- Compatible with:
 - 6" Splay Trim
 - 6" Magnetic Trim
 - 6" Gimbal Trim
 - 6" Deep Baffle Trim
- 24" Telescoping, Reversible Bar Hangers with Integral Nail
- Romex Slide Pry-Put And Hinged Panel J-Box
- Airtight Housing—Prevents Airflow Between Attic & Living Areas

WARRANTY

- 1-Year Warranty

ELECTRICAL

- 120v Input Voltage
- PowerPlug Luminaire Disconnect 2-Wire

CERTIFICATIONS

- cETLus Listed
- IC Rated

CLEARANCE

- Non-IC housings require a minimum clearance of 3" from thermal insulation and 1/2" from adjacent building components
- IC housings are rated for direct contact and do not have any minimum clearance requirements

DIMENSIONS

