

Schluter®-Profiles

Details make the difference



Photo: Villeroy & Boch



PROFILE OF INNOVATION





4



10



6



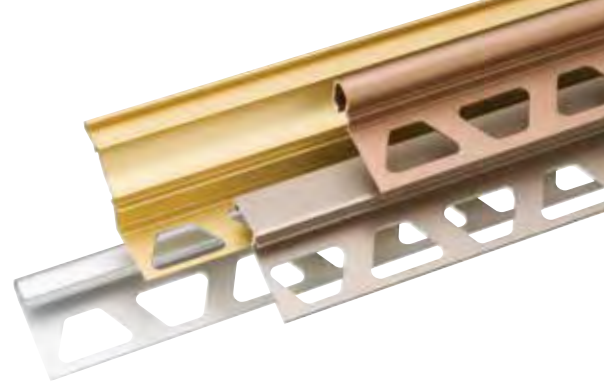
31



12

Details

MAKE THE Difference



Many homeowners approach tile installation projects with a list of materials consisting of thin-set, tiles, and grout...But it doesn't stop there. In fact, the only way to achieve a tile installation that is as beautiful as it is functional is through the use of finishing and edge-protection profiles.

Ceramic and stone tiles have become a popular trend in the design industry due to the durability and aesthetic appeal they offer. The extensive variety of available shapes, colors, patterns, and sizes opens the door to unlimited design possibilities. Unfortunately, a lack of trim pieces such as bullnose or quarter round in many tile lines can limit design options.

Schluter®-Systems offers a solution to this problem with various finishing and edge-protection profiles, which increase design flexibility because they can be integrated with any field tile.

Protect the edges

Though tiles are extremely durable, their edges are vulnerable to chipping and cracking if left unprotected. Imagine investing your time, money, and hard work into a tile project, only to end up with chips in your tile edges.

Schluter® profiles are designed to produce a long-lasting installation by protecting tile edges from damage.

Caulking - a thing of the past

Nobody likes caulking. It is used purely out of necessity to seal joints or seams, and allow for movement at floor/wall transitions and inside wall corners, or where tile meets a fixed element. Not only is caulking unsightly, it is not a permanent solution.

Schluter® profiles eliminate the need for caulking in tile installations. With cove-shaped profiles for floor/wall transitions and inside wall corners, and movement joint profiles with flexible zones to absorb movement, caulking has become a thing of the past.

Just for looks

While the majority of profiles are produced to meet functional installation needs, they can also be used to enhance design. Schluter® decorative profiles are produced exclusively for design purposes and are available in a variety of finishes to accent the field tile, match fixtures in the room, or create a decorative border around a mosaic insert.

A profile for every style

Schluter® profiles can blend with the tile color for a subtle finish, or contrast with the tile to create an accent.

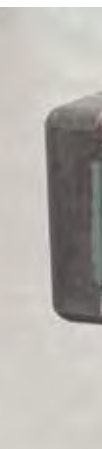
Whatever your design style, the wide variety of available materials, finishes, colors, and styles of Schluter® profiles helps ensure you will find a profile suiting your decor and installation needs.

Unleash your creativity!

Look inside to view examples of the many beautiful and functional design concepts at your disposal when you work with Schluter® profiles.



White and pewter profiles blend with the floor and wall tiles, while a beautiful glass mosaic wall and elegant linear drain complement this modern bathroom.



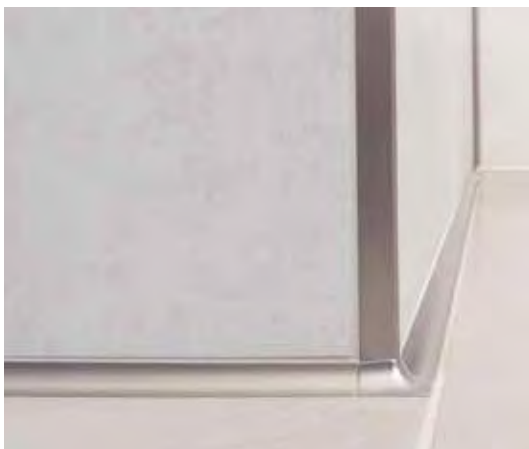


RONDEC bullnose profile and matching corners used to finish the tile edges on the walls, tub surround, shower bench, and to trim the shower niche. **RONDEC-CT** double-rail edging profile applied to the sink rail. **DILEX-AHK** cove-shaped profile used to create a smooth transition between the walls and floor. **SHOWERPROFILE-S** system profile eliminates the need to cut the wall tile to match the slope of the shower base, and allows for an easy installation of the first course of tile along the top edge of the profile.



Brushed nickel profiles add simple clean lines to this fresh-looking bathroom.





QUADEC square-shaped profile and corners used to finish the tile edges on the wall. **QUADEC-FS** double-rail edging profile used to frame the mosaic insert in the wall. **DILEX-AHK** cove-shaped profile and corners used to create a smooth transition between the floor and wall.



Hexagon shaped tiles installed on the floor and wall of this shower accent the design, while bronze profiles complement the rich brown colors and create clean finished edges and corners.





QUADEC square-shaped profile and corners applied to tile edges and outside corners of the shower including the shower bench and niche, and used to finish the tile base. **DILEX-AHK** cove-shaped profile and corners used to create a smooth transition between the walls and floor.



Stainless steel profiles and a sleek linear drain accent the stunning mosaic tile in this contemporary barrier-free bathroom.



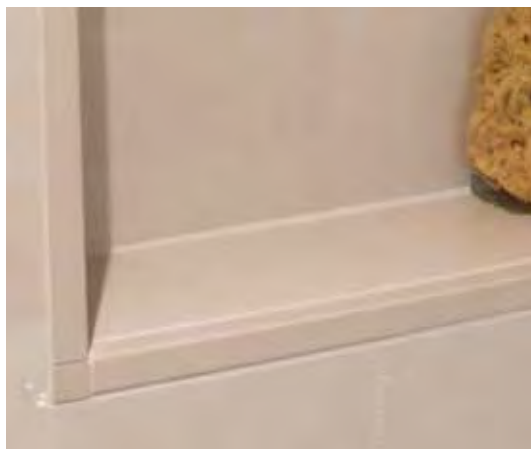


RONDEC bullnose profile and corner piece accessories used to finish the tile edges on the partition wall and shower bench. **DESIGNLINE** decorative profile applied to the wall. **DILEX-EKE** PVC corner movement joint profile inserted in the shower corners and along the bench to create a seamless transition. **SHOWERPROFILE-S** system profile eliminates the need to cut the wall tile to match the slope of the shower base, and allows for an easy installation of the first course of tile along the top edge of the profile.



Details make the difference in this quaint bathroom. Tiled walls with matching profiles give the allure of a larger space, while the tileable grate virtually disappears into the shower floor.





QUADEC square-shaped profile and corners used to finish the tile edges on the wall, shower curb and niche. **DILEX-EKE** PVC corner movement joint profile used to create a seamless transition between the shower walls and floor.



Brushed stainless steel profiles add a modern touch to this rustic bathroom, creating a spa-like feel.

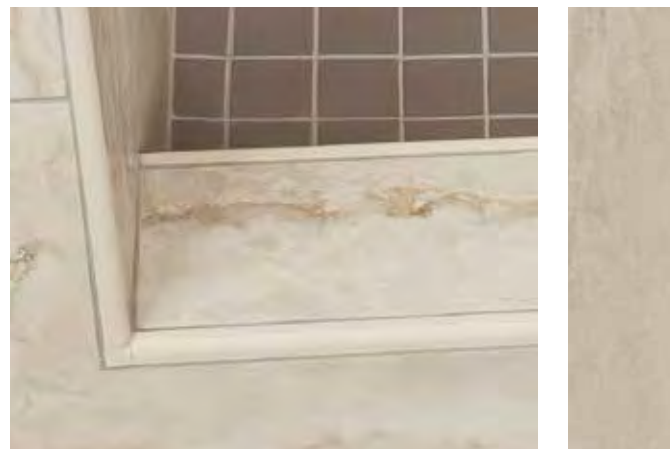




QUADEC square-shaped profile and corners applied to the tile edges of the bathtub skirting and wall tile, and used to trim the niches. **QUADEC-FS** double-rail edging profile applied to the sink rail. **DILEX-EHK** cove-shaped profile used to create smooth floor/wall and countertop/wall transitions.



In this traditional, neutral bathroom, tiles from the same series in two sizes on the walls and floor were paired with profiles perfectly matched to the tile. Sage paint and purple accents tie it all together.



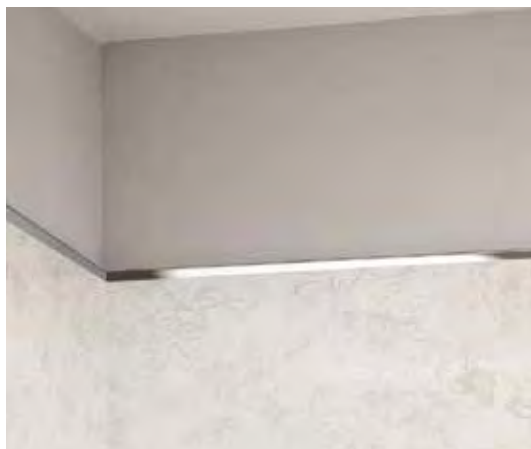


RONDEC bullnose profile used to finish the tile edges on the wall and tile base.
DILEX-EKE PVC corner movement joint profile in classic grey used to create a seamless transition between the shower walls and floor.



Polished chrome profiles installed throughout this modern bathroom match perfectly with the chrome fixtures, creating a sleek finished look.





QUADEC square-shaped profile and corners used to finish the tile edges on the wall and applied to the bathtub platform.
QUADEC-FS double-rail edging profile used to frame the mosaic insert in the wall.



Beige profiles blend perfectly with the large-format tiles on the countertop, as well as frame the mosaic insert in the backsplash.





RONDEC-CT double-rail edging profile applied to the sink rail. **RONDEC** bullnose profile used to finish the tile edges of the backsplash, and produce the tiled-under sink. **DILEX-AHK** cove-shaped profile used to create a smooth transition between the countertop and backsplash. **QUADEC-FS** double-rail edging profile used to frame the decorative mosaic insert in the backsplash. **DILEX-EKE** PVC corner movement joint profile inserted in the backsplash corners to create a seamless transition. Matching corners used throughout.



The satin anodized aluminum profile on the sink rail creates a bold, sleek finish in this kitchen design.





RONDEC-STEP edging profile applied to the sink rail. **RONDEC** bullnose profile and large radius sink corners used to produce the tiled-under sink. **DILEX-AHK** cove-shaped profile used to create a smooth transition between the countertop and backsplash.



Unique porcelain tile, natural wood, and terra-cotta accents give this kitchen a rustic feel, while stainless steel profiles and fixtures add a modern touch.





RONDEC bullnose profile and corners used to produce the tiled-under sink and finish the tile edges of the raised ledge and sink rail. **DILEX-EHK** cove-shaped profile used to create a smooth transition between the countertop and backsplash.



Subway tiles on the backsplash, porcelain tiles with granite look, and brushed aluminum profiles that match the appliances create this contemporary kitchen.





RONDEC bullnose profile and corners used to finish the countertop trim and tile edges of the backsplash. RONDEC was also used to produce the tiled-under sink. **RONDEC-CT** double-rail edging profile applied to the sink rail. **DILEX-AHK** cove-shaped profile used to create a smooth transition between the countertop and backsplash.



Transitioning from the tile floor to carpet is done effortlessly in this adjoining dining room and living room space, while adding a clean, finishing touch that blends in perfectly with the decor.





RENO-TK floor profile used to create a smooth transition between the tile and carpet. **RONDEC** bullnose profile and matching corners used to finish the edges of the tile base. **DILEX-EKE** PVC corner movement joint profile used to create a seamless transition between the floor and wall.



RENO-V floor profile used to create a smooth transition between the tile and wood.



RENO-TK floor profile used to create a smooth transition between the tile and carpet. **RONDEC** bullnose profile and matching corners used to finish the edges of the tile base. **DILEX-EKE** PVC corner movement joint profile used to create a seamless transition between the floor and wall.



Stainless steel adds a modern touch to this classic blue tile.



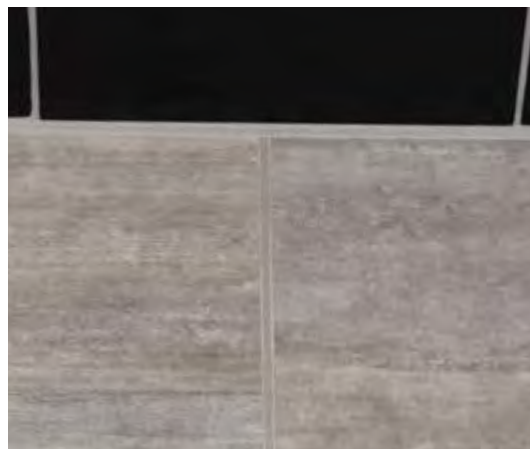


RONDEC edging profile and corner piece accessories used to finish the tile edges on the wall. **DILEX-EKE** PVC movement joint profile separates individual tile fields at floor-to-wall transitions and inside wall corners. **DILEX-BWB** PVC movement joint profile installed in the floor.

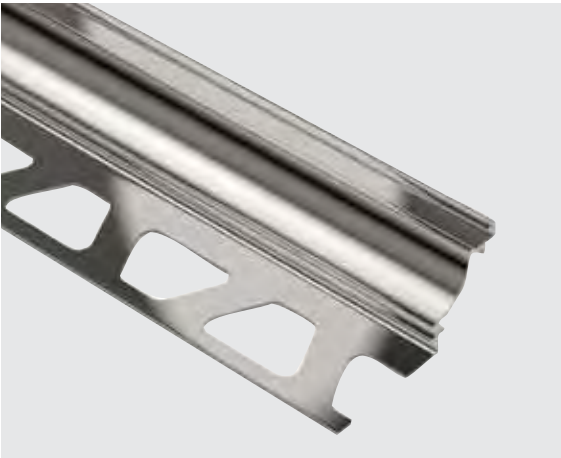
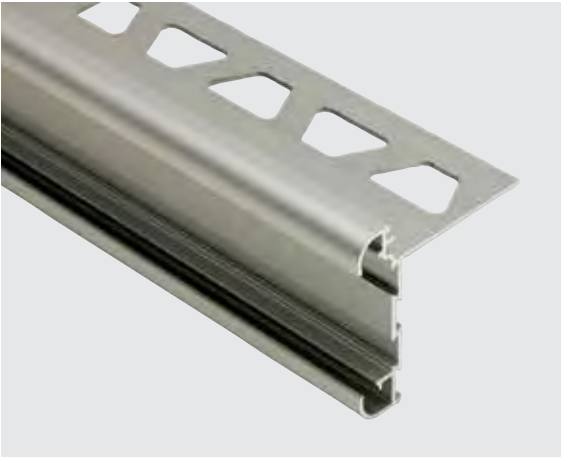
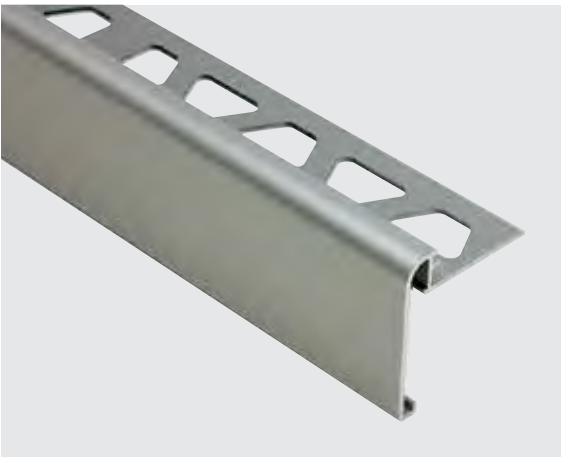


This tool area is back in black, with its stunning black subway tile and matching profile, contrasted by white grout to create a bold, fresh look.





RONDEC edging profile and corner piece accessories used to finish the tile edges on the wall. **DILEX-EKE** PVC movement joint profile separates individual tile fields at floor-to-wall transitions and inside wall corners. **DILEX-BWB** PVC movement joint profile installed in the floor.



Schluter® PROFILES

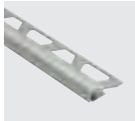
Leaving tile edges unfinished not only leads to damage, it also drastically diminishes the aesthetic appeal of the design. Schluter® profiles finish and protect tile edges, helping to ensure your installation will stand the test of time.





Tile Edges and Outside Wall Corners

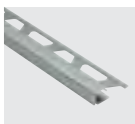
Profiles for tiled edges and outside wall corners finish and protect exposed edges of tiled surfaces such as walls and countertops.



Schluter®-RONDEC

Bullnose profile creating a soft finish to a tiled edge or outside corner installation.

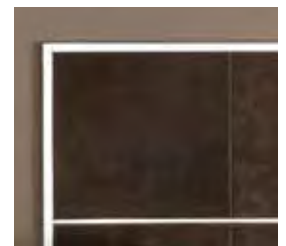
Accessories include: inside and outside corner pieces, sink corner pieces, end caps, and connectors.



Schluter®-QUADEC

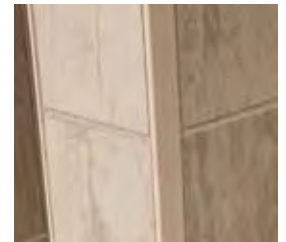
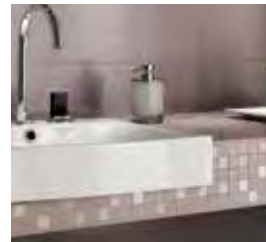
Square-shaped profile creating a sleek look.

Accessories include: inside and outside corner pieces, end caps, and connectors.



Schluter®-JOLLY

Straight-edge profile for the outside corners of tiled surfaces on walls. Ideal for creating decorative transitions on walls.



Decorative Profiles

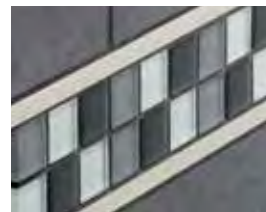
Decorative strip profiles are used to create design accents and interesting contrasts in the tile field. They can be used to frame a mosaic insert, create a break between two different tiles, or as a decorative accent to break up a large tile field.



Schluter®-QUADEC-FS

Double-rail feature strip profile with square edges matching QUADEC. Features a recessed section for field or accent tile inserts.

Accessories include: inside and outside corner pieces.



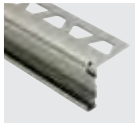
Schluter®-DESIGNLINE

Border profile used to create decorative designs in tile fields on walls or floors.



Countertops

Profiles for countertops finish and protect exposed edges of tiled surfaces. The various finishes available offer endless design possibilities.



Schluter®-RONDEC-CT

Double-rail profile with symmetrically rounded edges matching RONDEC. Features a recessed section for field or accent tile inserts.

Accessories include: inside and outside corner pieces.



Schluter®-RONDEC-STEP

RONDEC-STEP features a symmetrically rounded edge and is available in various finishes of anodized aluminum.

Accessories include: 90° and 135° inside and outside corners.



Schluter®-SCHIENE-STEP

Designed to cover the sub-assembly. SCHIENE-STEP is offered in brushed stainless steel and features a thin, straight edge.

Accessories include: inside and outside corner pieces and connectors.



Two **NEW** Textured Finishes for QUADEC and DESIGNLINE!

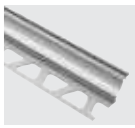


The stainless steel QUADEC and DESIGNLINE profiles are available in two new textured finishes: **square check** and **leather texture**.



Inside Wall Corners

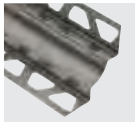
Cove-shaped profiles eliminate the need for caulking, are easy-to-clean and do not trap debris or moisture, making them suitable for use in areas with strict hygienic requirements such as showers and kitchen countertops.



Schluter®-DILEX-AHK

Anodized aluminum profile for applications where limited movement is expected.

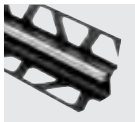
Accessories include: inside and outside corner pieces, end caps, and connectors.



Schluter®-DILEX-EHK

Stainless steel profile for applications where limited movement is expected.

Accessories include: inside and outside corner pieces, end caps, and connectors.



Schluter®-DILEX-EKE

PVC movement joint profile forming a discreet, uniform joint. Available in various colors to match grout.



Perimeter Joints

A perimeter joint is designed to allow movement and reduce stress in large, tiled areas. These types of profiles also eliminate the need for caulking to create a sleek, permanent movement zone that isolates the tile covering from fixed building elements, such as bathtubs and shower trays. Profiles are available in an assortment of colors and finishes to match the grout.



Schluter®-DILEX-BWA

PVC perimeter joint profile that isolates the tile covering from fixed building elements. Available in various colors to match grout.





Floor Transitions

Transitions from a tiled floor to other surfaces need to be protected, and floor profiles are designed to ensure a smooth transition, while preventing tile edges from chipping and cracking.



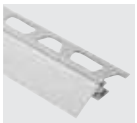
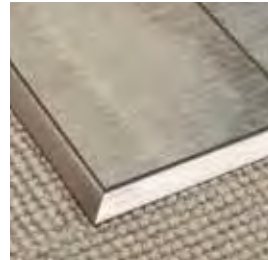
Schluter®-RENO-U

Designed to protect tile edges and provide a smooth transition between tile coverings and floor coverings at lower elevations by abutting both surfaces.



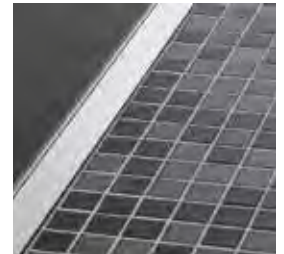
Schluter®-RENO-TK

Designed to protect tile edges and provide a smooth transition from tile coverings to floor coverings at lower elevations, typically carpet.



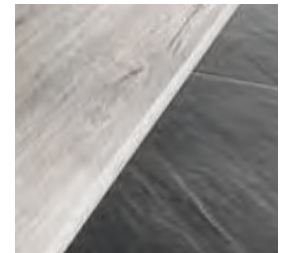
Schluter®-RENO-V

Designed to protect tile edges and provide a smooth transition between tile coverings and floor coverings at lower elevations.






Schluter®-RENO-T

Designed to provide transitions between existing, same-height, hard surface floor coverings.



FINISHES and COLORS

Finish Reference Table																				
Products	Finishes	ACB	ACG	ACGB	AE	AGR	AGRB	AGSG	AGSB	AT	ATB	ATG	ATGB	AK	AKB	AKG	AKGB	ABGB	AM	
 Edge-protection and transition profiles for floors																				
SCHIENE (also JOLLY)		●		●	●					●	●		●	●	●			●	●	●
DECO					●															
RENO-T					●					●				●						●
RENO-TK		●			●					●			●	●				●	●	
RENO-U		●			●					●			●	●				●	●	●
RENO-RAMP					●															
RENO-V					●															●
 Finishing and edge-protection for walls and countertops																				
JOLLY (also SCHIENE)			●	●	●		●	●		●		●	●	●			●	●	●	●
QUADEC			●		●					●									●	
QUADEC-FS			●		●					●									●	
SCHIENE-STEP																				
RONDEC			●	●	●	●		●	●	●		●	●	●			●	●	●	●
RONDEC-DB					●									●						●
RONDEC-STEP				●	●					●			●	●				●	●	●
RONDEC-CT				●	●					●			●	●				●		●
DESIGNLINE			●	●	●					●		●	●	●			●	●		●
DECO-DE																				
 Cove-shaped profiles																				
DILEX-AHK			●	●	●		●			●		●	●	●			●	●		●
DILEX-AHKA				●	●					●			●							
DILEX-EHK/-HKU																				

STAINLESS STEEL, CHROME-PLATED BRASS, AND SOLID BRASS



ANODIZED ALUMINUM

Polished and bright anodized aluminum



Satin anodized aluminum




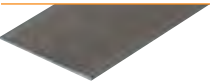





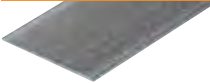




AMB	AMG	AMGB	E	EB	ES1	ES2	M	MC	TRENDLINE (TS)
●		●	●	●			●		
			●				●	●	
			●	●			●		
●			●	●			●		
●			●	●			●		
	●	●	●	●			●	●	●
			●	●	●	●			●
				●					
	●	●	●	●					●
									*TSB, TSOB, and TSG only
	●	●	●	●	●	●		●	
			●	●					
	●	●							●
									*TSB, TSOB, and TSG only
			●	●					




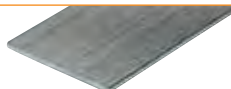



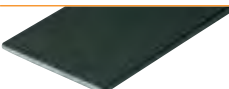

Schluter®-TRENDLINE

TEXTURED COLOR-COATED ALUMINUM

 TSR Rustic brown textured color-coated aluminum	 TSDA Dark anthracite textured color-coated aluminum	 TSLA Light anthracite textured color-coated aluminum
 TSSG Stone grey textured color-coated aluminum	 TSC Cream textured color-coated aluminum	 TSBG Greige textured color-coated aluminum
 TSI Ivory textured color-coated aluminum	 TSB Beige textured color-coated aluminum	 TSOB Bronze textured color-coated aluminum
 TSG Pewter textured color-coated aluminum	 MBW Matte white textured color-coated aluminum	 MGS Matte black textured color-coated aluminum

ANODIZED ALUMINUM

Brushed anodized aluminum

 ACGB Brushed chrome anodized aluminum	 ATGB Brushed nickel anodized aluminum	 AKGB Brushed copper anodized aluminum	 AMGB Brushed brass anodized aluminum	 ABGB Brushed antique bronze anodized aluminum
 AGRB Brushed graphite anodized aluminum	 AGSB Brushed black anodized aluminum			

PVC & COLOR-COATED ALUMINUM

 BW Bright white	 BH Bahama	 RB Red brown	 HG Light grey
 W White	 HB Light beige	 SB Black brown	 PG Classic grey
 SP Sand pebble	 NB Nut brown	 GS ^{*PVC only} Black	 G Grey



Schluter Systems L.P. • 194 Pleasant Ridge Road, Plattsburgh, NY 12901-5841 • Tel.: 800-472-4588 • Fax: 800-477-9783
Schluter Systems (Canada) Inc. • 21100 chemin Ste-Marie, Ste-Anne-de-Bellevue, QC H9X 3Y8 • Tel.: 800-667-8746 • Fax: 877-667-2410

www.schluter.com