



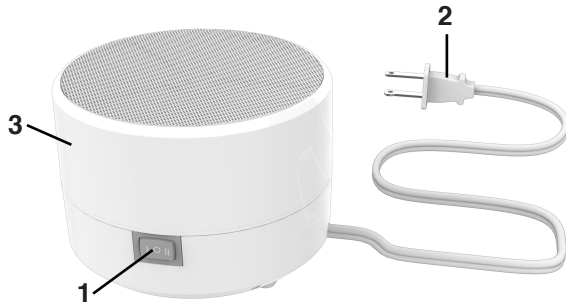
White Noise Sound Machine Owner's Manual

Model # BRRC106

LOCATION OF CONTROLS:

1. Low-Off-High Power Switch
2. Power cord
3. Volume/tone control

FIG. 1



OPERATING INSTRUCTIONS:

1. Position the white noise machine on a hard, flat surface away from you so the sound fills the room
2. Plug in the white noise machine
3. Select I (low) or II (high) on the power switch
4. Adjust the volume/tone. See Fig. 2.
 - Twist the top clockwise to reduce the airflow
 - Twist the top counter-clockwise to increase the airflow

FIG. 2

**TURN TOP
CLOCKWISE
TO REDUCE
AIR FLOW**



**TURN TOP
COUNTER-
CLOCKWISE
TO INCREASE
AIR FLOW**

SAFETY INSTRUCTIONS:

This white noise machine is equipped with a polarized plug. The wider blade is the ground side of the cord. This ensures the correct electrical polarity. If the plug does not fit rotate the plug 180 degrees and try it again. Some apartments and homes do not have polarized electrical receptacles. This polarized plug will not fit into a non-polarized receptacle. If the plug does not fit in your electrical receptacle contact a qualified electrician. Do not use this white noise machine with an extension cord or a surge protector.

IMPORTANT SAFETY INSTRUCTIONS

WARNING – When using electric appliances, basic precautions should always be followed, including the following:

- Read all the instructions before using the appliance.
- To reduce the risk of injury, close supervision is necessary when an appliance is used near children.
- Do not contact moving parts.
- Only use attachments recommended or sold by the manufacturer.
- Do not use outdoors.
- To disconnect, turn all controls to the off (“O”) position, then remove plug from outlet.
- Do not unplug by pulling on cord. To unplug, grasp the plug, not the cord.
- Unplug from outlet when not in use and before servicing or cleaning.
- Do not operate any appliance with a damaged cord or plug, or after the appliance malfunctions or is dropped or damaged in any manner. Return appliance to the nearest authorized service facility for examination, repair, or electrical or mechanical adjustment.
- To reduce the risk of electrical shock, do not put in water or other liquid. Do not place or store appliance where it can fall or be pulled into a tub or sink. Replace with specific part of appliance in question.
- This product is for adult use only. This product is not a toy and children should not be allowed to use this product.
- Do NOT place this product in or near a crib, playpen or child's bed.
- Do NOT use the product if the power cord or plug is damaged. If damaged discard of the product.
- Do NOT run the power cord under carpeting, rugs or other floor coverings.
- Do NOT route power cord under appliances or furniture.
- Do NOT use this product near water or wet environments.
- Do NOT place this device on heat sources such as radiators, heat registers or stoves.
- Do NOT place the white noise machine on carpeting or in a bed. Do NOT cover the white noise machine with a blanket and do NOT block the holes on the bottom of the white noise machine. This can cause the unit to overheat and damage the product and the area surrounding it.
- To reduce the risk of fire or electric shock, do not use this product with a solid-state speed control device (example: dimmer switch).
- No user maintenance is required.

SAVE THESE INSTRUCTIONS

ONE-YEAR LIMITED WARRANTY:

This product is warranted to the original purchaser that the product will be free from defects in materials and workmanship for a period of one year from the date of purchase. Additional details are available at www.bigredroosterproducts.com.