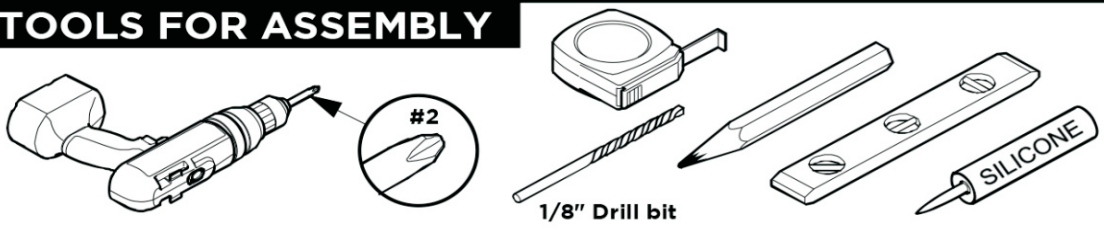
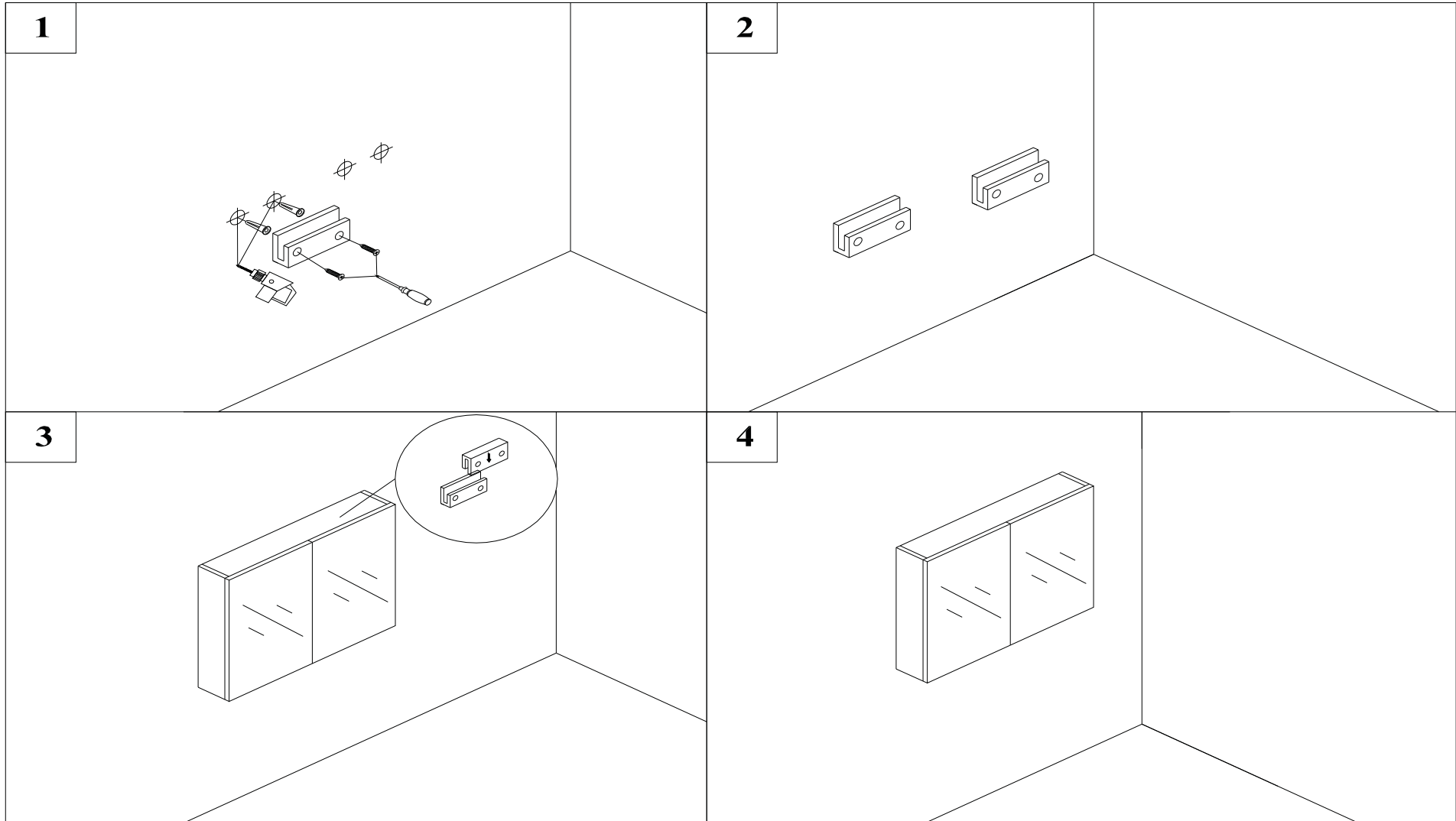


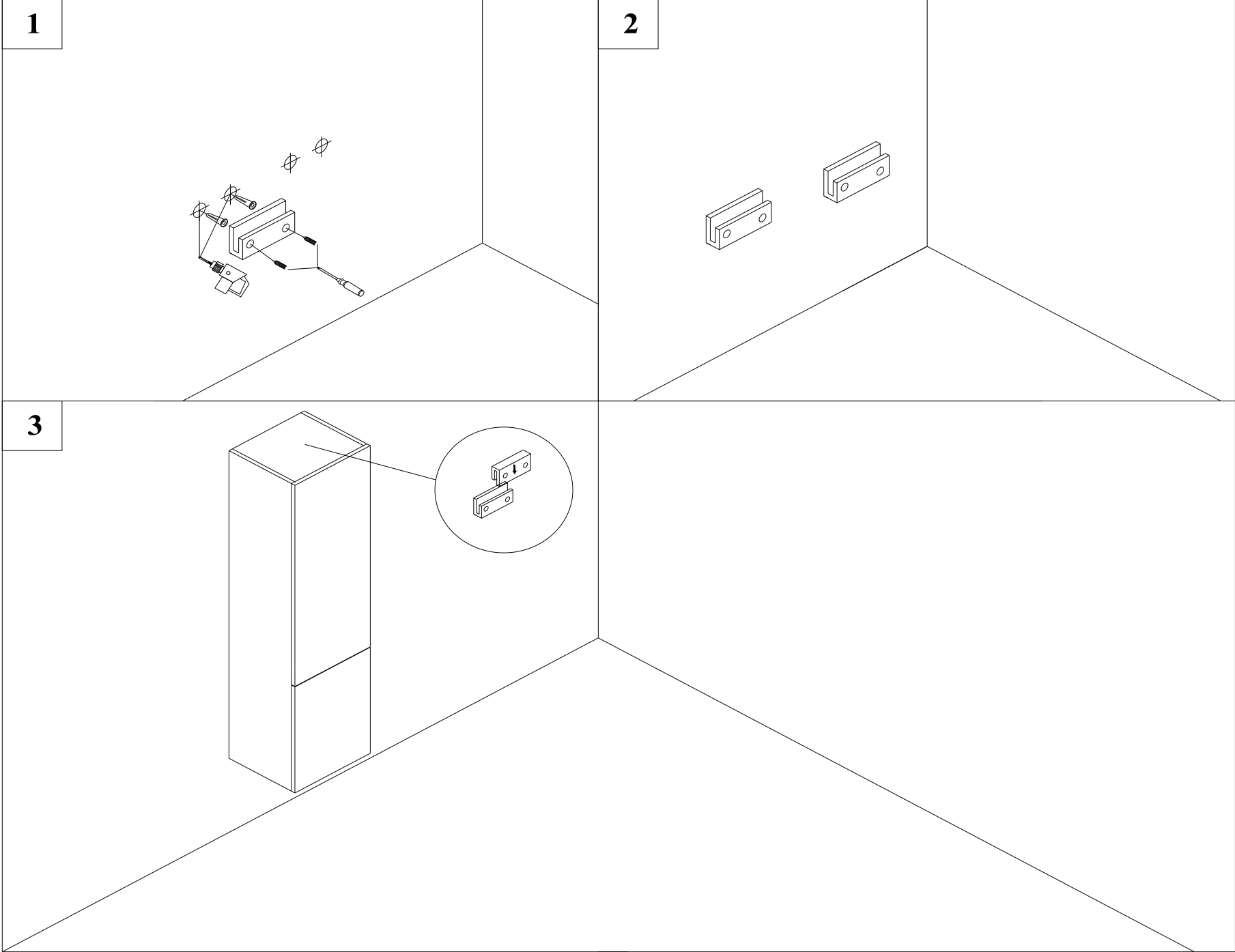
TOOLS FOR ASSEMBLY



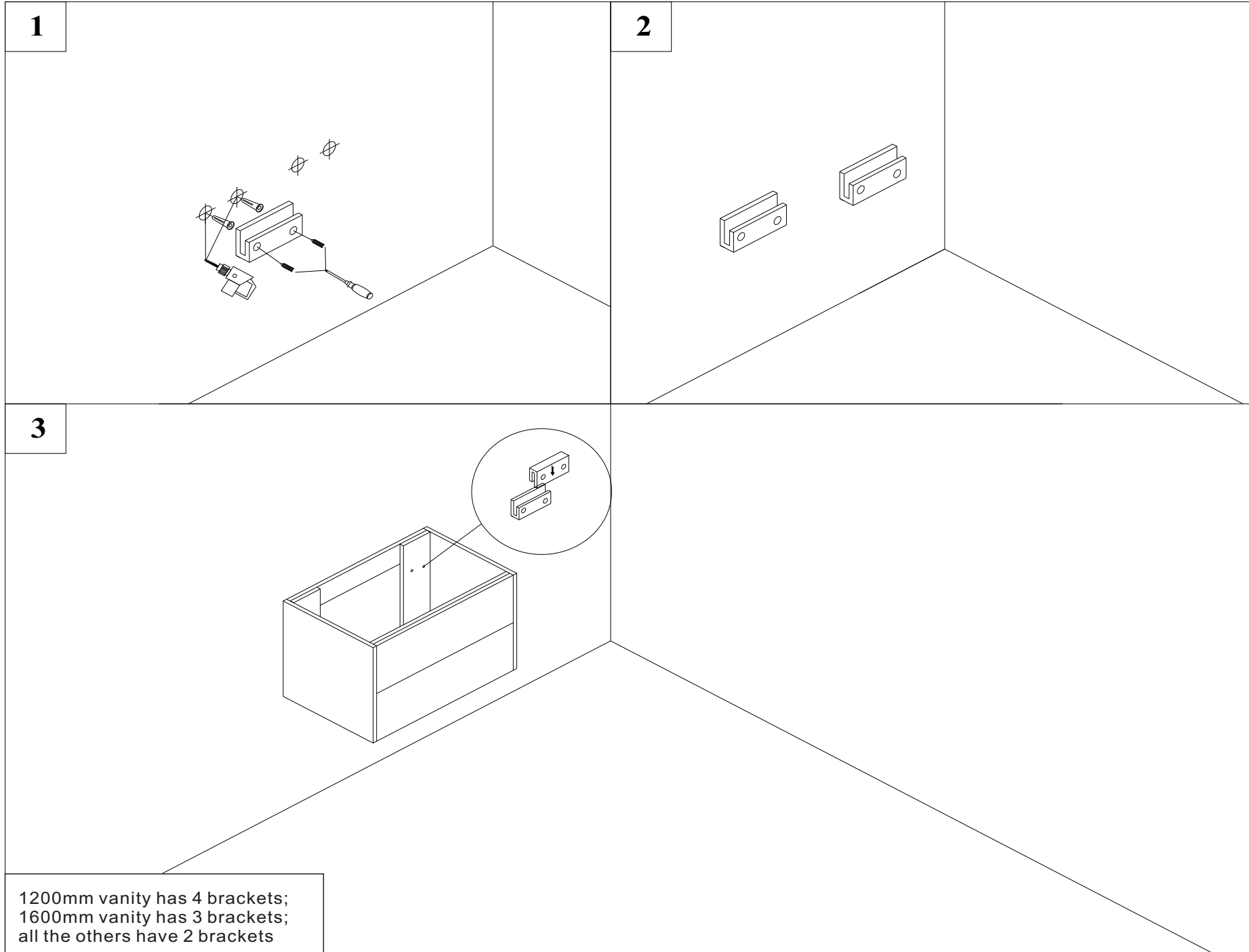
MIRROR INSTALLATION



SIDE CABINET INSTALLATION



VANITY BASE INSTALLATION

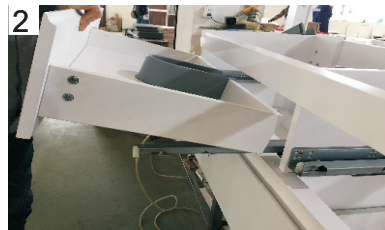


COMMON-CLOSING DRAWER REMOVAL & INSTALLATION

Three drawer configurations, please follow instructions for drawer removal and installation for the applicable model below.

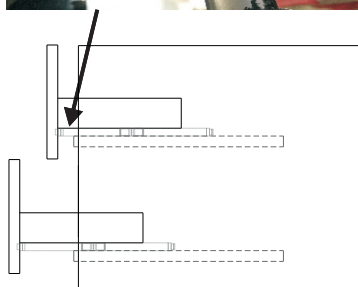
□ DRAWER TYPE 1

Removal



Removal:

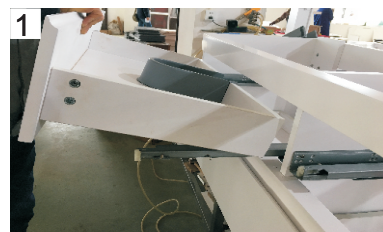
1. Unscrew both bolts
2. Lift the drawer and pull it out



Installation:

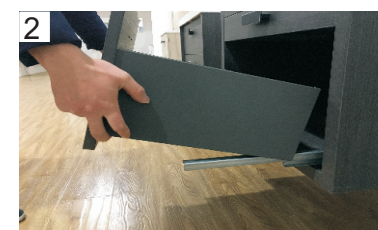
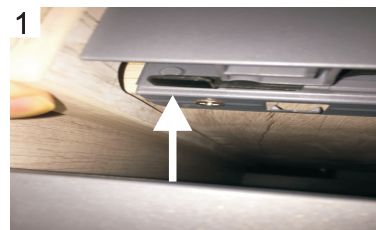
1. Place drawer on the rail glide
2. Push the drawer in and hook it
3. Push the drawer down and lock it via a button
4. Screw both bolts to secure the drawer

Installation



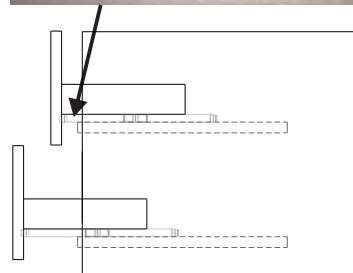
□ DRAWER TYPE 2

Removal



Removal:

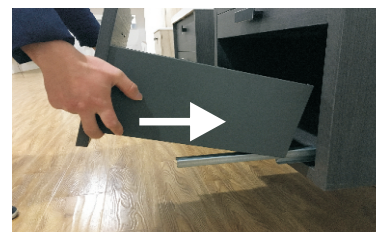
1. Press the button under the drawer glide
2. Lift the drawer and pull it out



Installation:

1. Place drawer on the rail glide
2. Push the drawer down and in

Installation



□ DRAWER TYPE 3

Upper drawer: with refer to DRAWER TYPE 1

Bottom drawer: with refer to DRAWER TYPE 2

Top/Sink installation

Intergratded Top/Sink Installation

