

# **WeatherSide™ Fiber-Cement Siding Sell Sheet**

(RESFC200)

Updated: 6/16



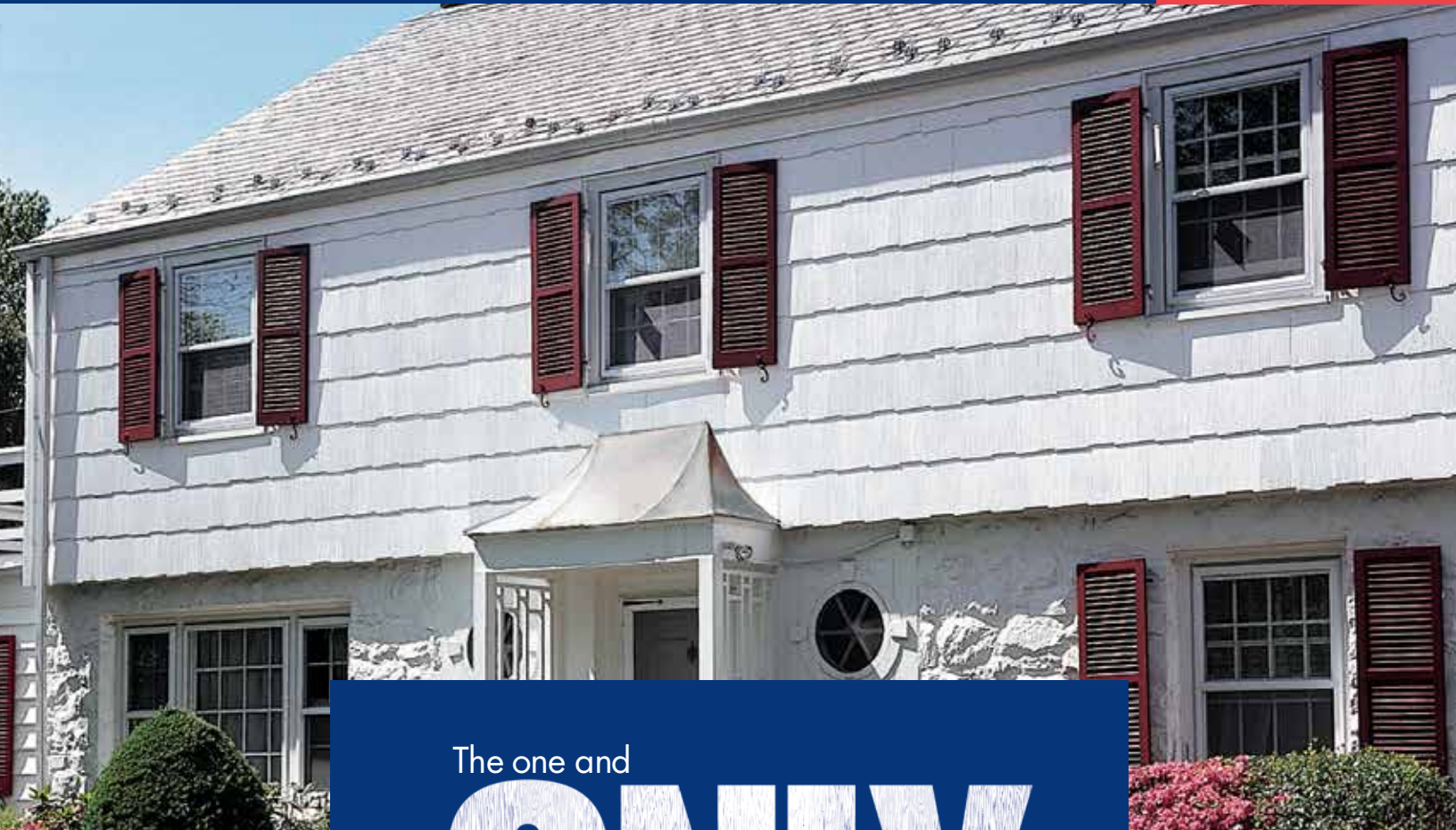
*Quality You Can Trust...From  
North America's Largest Roofing Manufacturer!™*



# WeatherSide™

FIBER-CEMENT SIDING

Pre-primed  
& ready for  
painting!



The one and

# ONLY

solution for repairing asbestos siding!

- **Perfect Design...** Virtually identical in size and shape to millions of old non-existent asbestos siding shingles installed over the last 50 years
- **Safe...** WeatherSide™ Fiber-Cement Siding contains NO asbestos
- **Avoids Hassles and Expenses...** Great for repairing or matching damaged asbestos siding shingles, siding small additions, or even changing windows without the expense of new siding for the whole house
- **Easy Installation...** After properly removing the old siding,\* simply nail the WeatherSide™ Fiber-Cement Siding in place and paint
- **Pre-Primed...** Ready to be painted to match existing wall color
- **Extremely Durable...** Won't warp, dent, rot, shrink, or expand, and even resists termite infiltration
- **Fire Safe...** WeatherSide™ Fiber-Cement Siding meets or exceeds UL-approved non-combustible testing (ASTM E136 & UL 723)

\*We recommend that any removal and disposal of asbestos-containing products be done by a professionally trained asbestos-removal contractor.



# WeatherSide™

FIBER-CEMENT SIDING

Pre-primed  
& ready for  
painting!

## Great For New Residential Applications And Tough And Durable Enough For Commercial Construction...

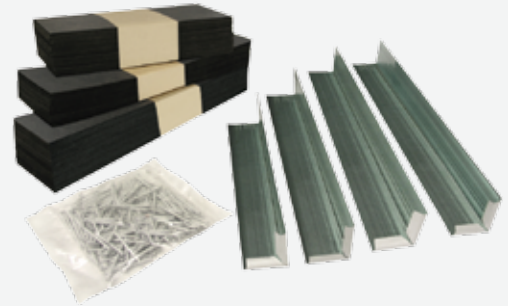
- **Proven Technology...** WeatherSide™ Fiber-Cement Siding is fire-proof, durable, and resistant to freeze-thaw conditions
- **Fast Installation...** Unlike some other fiber-cement siding products, WeatherSide™ Fiber-Cement Siding does not require caulking at every joint
- **Classic Look...** Distinctive beauty unavailable in other siding products
- **Pre-Primed...** Comes with a flat white primed surface, ready for painting
- **Peace Of Mind...** Backed by a 25-year ltd. warranty\*

\*See WeatherSide™ Limited Warranty for complete coverage and restrictions.



## Matching Accessories Available...

WeatherSide™ Fiber-Cement Siding accessories offer faster, easier, more accurate installation and include:

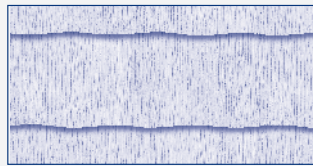


- Siding Nails
- Pre-Primed Individual Corners (9", 12", 14", and Emphasis™)
- Backer Strips (9", 12", and 14")

## SHINGLE SELECTOR

### Purity™ Shingle

Textured surface with Straight, Wavy, or Thatched edge.

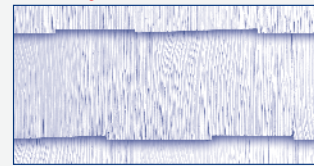


Straight/Wavy    Thatched

Size:	12" x 24"	12" x 24"
Exposure:	11"	10 1/2"
Thickness:	11/64"	11/64"
Pcs./Bundle:	18	19
Bundles/Sq.:	3	3
Sqs./Pallet:	20	20
Lbs./Sq.:	168	186

### Emphasis™ Shingle

Extra-thick wood grain surface with Thatched edge.



14 5/8" x 25 5/32"

Size:	14 5/8" x 25 5/32"
Exposure:	13"
Thickness:	9/32"
Pcs./Bundle:	11
Bundles/Sq.:	4
Sqs./Pallet:	10
Lbs./Sq.:	268

### Profile Shingle

Striated surface with Straight edge.



Profile 9    Profile 12    Profile 14

Size:	9" x 32"	12" x 24"	14 5/8" x 32"
Exposure:	8"	11"	13 5/8"
Thickness:	11/64"	11/64"	11/64"
Pcs./Bundle:	19	18	11
Bundles/Sq.:	3	3	3
Sqs./Pallet:	15	20	15
Lbs./Sq.:	177	165	171

Note: We recommend that any removal and disposal of asbestos-containing products be done by a professionally trained asbestos-removal contractor.



Quality You Can Trust...From  
North America's Largest Roofing Manufacturer!™

FIBER-CEMENT SIDING