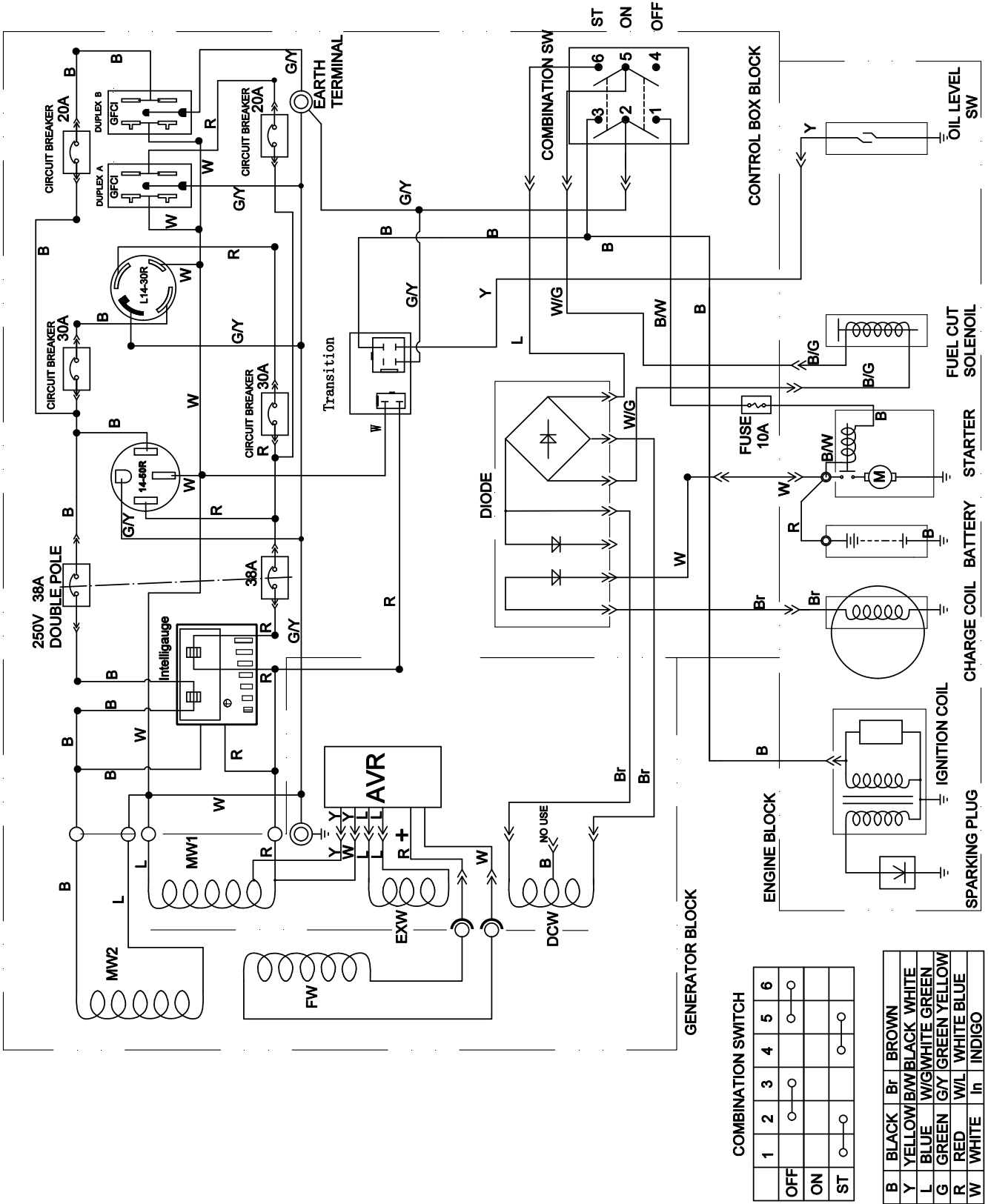


Wiring Diagram



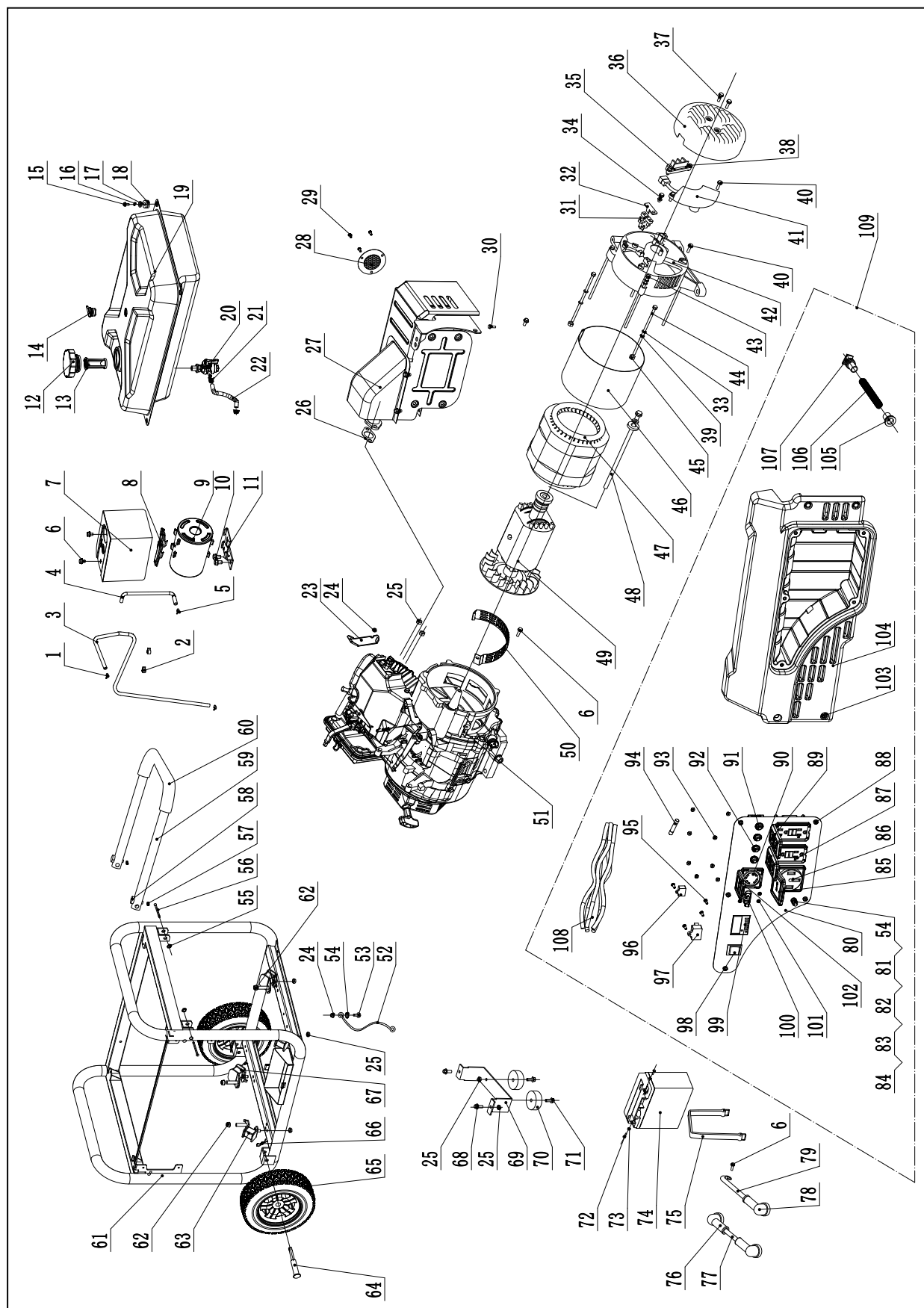
COMBINATION SWITCH

1	2	3	4	5	6
OFF		○	○	○	○
ON	○				
ST	○	○			

B	BLACK	Br	BROWN
Y	YELLOW	B/W	BLACK WHITE
L	BLUE	W/G	WHITE GREEN
G	GREEN	GY	GREEN YELLOW
R	RED	W/L	WHITE YELLOW
W	WHITE	In	INDIGO

# SPECIFICATIONS

## Parts Diagram

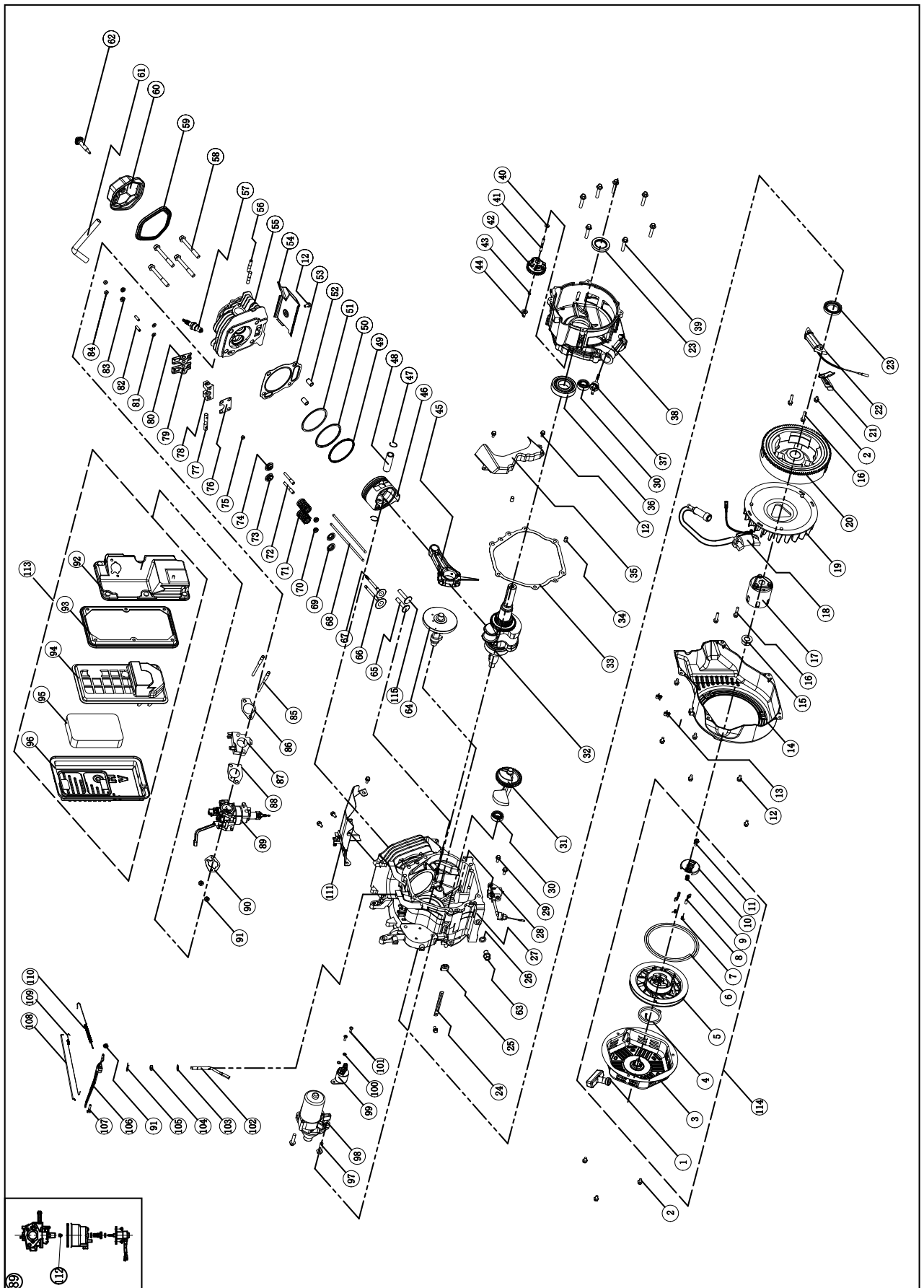


#	Part Number	Description	Qty
1	2.06.006	Clamp, Ø7 x Ø1	2
2	2.05.001	Clamp, Ø8 x 6.5	2
3	152.070014.05	Pipe, Reversal Valve, 810 mm	1
4	152.070013.03	Pipe, Air Cleaner, 135 mm	1
5	2.06.004	Clamp, Ø8 x Ø1	1
6	1.5789.0608	Flange Bolt M6 x 8	4
7	152.070018.02	Board, Heat Insulation	1
8	152.070702.06	Support Arm, Top	1
9	152.070700.02	Carbon Canister, 650 cc	1
10	1.16674.0812	Flange Bolt M8 x 12	2
11	152.070702.05	Support Arm, Bottom	1
12	122.070100.07	Fuel Tank Cap	1
13	122.070300.03	Fuel Filter	1
14	24.070800.00	Reversal Valve	1
15	1.5789.0620.1	Flange Bolt M6 x 20, Black	4
16	1.93.06	Lock Washer Ø6	4
17	2.03.004.1	Washer, Ø24 x Ø6.5 x 1.5, Black	4
18	122.070015.01	Mount Vibration, Fuel Tank	4
19	152.071000.40.48	Fuel Tank, Yellow	1
20	122.070400.05	Fuel Valve	1
21	2.06.007	Clamp, Ø8 x b6	2
22	152.070011.07	Pipe, Fuel, 195 mm	1
23	45.090006.20	Holder, Air Cleaner	1
24	1.6177.1.06	Lock Nut M6, Flange	2
25	1.6177.1.08	Lock Nut M8, Flange	10
26	47.100001.00	Gasket, Exhaust	1
27	46.101000.01.2	Muffler Assembly	1
28	46.101300.00	Spark Arrester Assembly	1
29	1.9074.4.0510	Screw/Washer Assembly M5 x 10	3
30	1.16674.0820	Flange Bolt M8 x 20	2
31	152.190300.00	Carbon Bursh Assembly	1
32	122.190004.01	Pinch, Carbon Brush	1
33	1.93.05	Lock Washer Ø5	2
34	1.9074.15.0520	Screw/Washer Assembly M5 x 20	1
35	122.190400.00	Terminal Block	1
36	152.190003.00.48	Generator End Cover, Yellow	1
37	1.16674.0512.2	Flange Bolt M5 x 12	2
38	1.9074.17.0516	Screw/Washer Assembly M5 x 16	2
39	1.97.1.05	Washer Ø5	2
40	1.16674.0516	Flange Bolt M5 x 16	3
41	153.190200.03	AVR	1
42	152.190002.00	End Housing	1
43	2.08.069	Flange Bolt/Washer Assembly M6 x 194	4
44	2.08.071	Bolt M5 x 229	2
45	1.6175.05	Nut M5	2
46	154.191002.00	Stator Cover	1
47	154.191200.01	Stator Assembly, Cu, Ø204 x 158 mm, CSA	1
48	2.08.070	Flange Bolt/Washer Assembly M10 x 280	1
49	154.191100.01	Rotor Assembly, Cu, Ø204 x 158 mm, CSA	1
50	152.192300.01	Air Guide	1
51	48.601	Engine	1
52	5.1900.026	Grounding Line 150 mm	1
53	1.5789.0612	Flange Bolt M6 x 12	1
54	1.862.06	Lock Washer Ø6, Toothed	2
55	1.894.1.10	Circlip Ø10	2
56	152.200703.04	Long Pin, Handle	2
57	1.894.1.08	Circlip Ø8	2

#	Part Number	Description	Qty
58	152.200703.02	Short Pin, Handle	2
59	152.200701.02.2	Handle, U Shape	1
60	152.200702.02	Cover, Handle	1
61	65251.0.10.2	Frame	1
62	1.6177.1.10	Lock Nut M10, Flange	4
63	152.201200.03	Motor Mount 1	2
64	122.201501.25	Pin Roll, Wheel, Ø16 x Ø10 x 107	2
65	152.201701.09.1	9.5 in. Wheel, PU, Black	2
66	2.16.001	Pin Ø2 x 33, "R" Shape	2
67	152.201200.04	Motor Mount 2	2
68	1.5789.0816	Flange Bolt M8 x 16	2
69	152.200002.01.2	Support Leg 84 mm	1
70	152.201400.00	Rubber, Support	2
71	1.5789.0825	Flange Bolt M8 x 25	2
72	1.9074.3.0510	Screw/Washer Assembly M5 x 10	2
73	1.6177.1.05	Lock Nut M5, Flange	2
74	9.1000.150	Battery 12V15AH	1
75	152.200904.00	Pinch, Rubber	1
76	152.200013.01.3	Jacket, Wire, Red	2
77	5.1900.021	Red Wire, 480 mm, Battery	1
78	152.200013.01	Jacket, Wire, Black	1
79	5.1900.014	Black Wire, 320 mm, Battery	1
80	152.209.3.2	Control Panel, Black	1
81	1.5783.0622.3	Bolt M6 x 22, Green	1
82	1.6175.06.3	Nut M6, Green	2
83	1.97.1.06.3	Washer Ø6, Green	2
84	1.93.06.3	Lock Washer Ø6, Green	2
85	5.1870.007	Receptacle Cover, Receptacle 14-50R	1
86	5.1120.044	Receptacle 14-50R	1
87	5.1120.050	Receptacle 5-20R, Duplex GFCI	2
88	1.9074.4.0514.1	Screw/Washer Assembly M5 x 14, Black	5
89	5.1870.005	Receptacle Cover, Receptacle 5-20R, Duplex GFCI	2
90	5.1120.009	Receptacle L14-30R	1
91	5.1210.920	20Amp Circuit Breaker, Push Button, CSA	2
92	5.1210.930	30Amp Circuit Breaker, Push Button, CSA	2
93	1.6177.1.04.1	Lock Nut M4, Flange, Black	10
94	5.1280.003	Fuse, 10A	1
95	1.818.0514	Screw M5 x 14	4
96	5.1810.001	Over Voltage Protector	1
97	5.1800.000	Rectifier	1
98	5.1000.001.3	Ignition Switch, Red	1
99	5.1440.008	Intelligauge, With Power Meter	1
100	5.1240.380	38Amp Circuit Breaker, Double Pole	1
101	1.9074.4.0306.1	Screw/Washer Assembly M3 x 6, Black	4
102	5.1870.003	Receptacle Cover, Receptacle L14-30R	1
103	1.5789.0615.1	Flange Bolt M6 x 15, Black	4
104	152.210002.21	Control Box	1
105	122.210003.01	Wire Jacket, Control Box	1
106	5.1330.018	Sheath, Wire, Ø16 x 180 mm	1
107	152.210003.02	Plug, End Cover	1
108	100110.21.10	Wire Assembly	1
109	100110.21	Control Panel Assembly	1

# SPECIFICATIONS

## Engine Parts Diagram



#	Part Number	Description	Qty
1	21.061300.00	Handle, Recoil, Soft	1
2	1.5789.0608	Flange Bolt M6 x 8	4
3	46.061100.00.2	Cover, Recoil Starter, Black	1
4	45.060005.00	Spring, Recoil Starter	1
5	45.061102.00	Reel, Recoil Starter	1
6	2.10.003	Rope Ø5 x 1550	1
7	45.060003.00	Spring, Ratchet	2
8	45.060002.00	Starter Ratchet, Steel	2
9	45.060009.00	Spring, Ratchet Guide	1
10	45.060007.00	Ratchet Guide	1
11	45.060008.00	Screw, Ratchet Guide	1
12	1.5789.0612	Flange Bolt M6 x 12	12
13	2.05.005	Clamp, Ø6	2
14	47.080100.01.48	Fan Cover, Yellow	1
15	2.02.007	Nut M16 x 1.5	1
16	1.5789.0629	Flange Bolt M6 x 29	4
17	45.060001.00	Pulley, Starter	1
18	46.123000.03	Ignition Coil	1
19	48.080001.00	Cooling Fan	1
20	46.120100.04	Flywheel	1
21	45.030006.00	Plate, Coil	1
22	45.121000.00	Coil, Charging	1
23	2.11.007	Oil Seal Ø35 x Ø52 x 8	2
24	2.05.050	Wire Clip, 100 mm	1
25	152.070031.01	Sheath, Wire	1
26	2.03.023	Washer Ø12.5 x Ø20 x 2, Drain Bolt	1
27	48.030100.00	Crankcase	1
28	45.127000.02	Oil Level Sensor	1
29	1.5789.0615	Flange Bolt M6 x 15	2
30	1.276.6202	Bearing 6202	2
31	48.050006.00	Weight Balancer	1
32	47.050100.01	Crankshaft Assembly	1
33	46.030008.00	Gasket, Crankcase Cover	1
34	2.04.001	Dowel Pin Ø9 x 14	2
35	46.080600.00	Air Guide, Right Side	1
36	1.276.6207	Bearing 6207	1
37	46.031000.01.48	Oil Dipstick Assembly, Yellow	1
38	45.030007.00	Cover, Crankcase	1
39	1.5789.0840.0.8	Flange Bolt M8 x 40	7
40	2.03.021.1	Washer Ø6.4 x Ø13 x 1, Black	1
41	45.110013.00	Shaft, Governor Gear	1
42	45.110100.00	Gear, Governor	1
43	21.110011.00	Clip, Governor Gear	1
44	45.110012.00	Bushing, Governor Gear	1
45	47.050200.00	Connecting Rod Assembly	1
46	48.050005.00	Piston	1
47	2.09.004	Circlip Ø21 x Ø1	2
48	45.050003.00	Pin, Piston	1
49	48.050303.00	Ring, Oil	1
50	48.050302.00	Ring, Second Piston	1
51	48.050301.00	Ring, First Piston	1
52	2.04.004	Dowel Pin Ø12 x 20	2
53	48.030009.00	Gasket, Cylinder Head	1
54	46.080400.00	Air Guide, Lower	1
55	47.010100.01	Cylinder Head	1
56	2.01.010	Stud Bolt M8 x 35	2
57	2.15.002(F6RTC)	Spark Plug F6RTC	1

#	Part Number	Description	Qty
58	2.08.122	Flange Bolt M10 x 95	4
59	46.020002.00	Gasket, Cylinder Head Cover	1
60	47.021000.00	Cover, Cylinder Head	1
61	45.020001.02	Breather Tube	1
62	47.020100.00	Bolt, Cylinder Head Cover	1
63	2.08.039	Drain Bolt M12 x 1.5 x 15	1
64	48.041000.00	Camshaft	1
65	48.040013.00	Lifter, Intake Valve	1
66	47.040002.00	Valve, Intake	1
67	47.040006.00	Valve, Exhaust	1
68	46.040005.00	Push Rod	2
69	45.040015.00	Retainer, Valve Spring	2
70	45.040017.00	Oil Seal, Valve	2
71	45.040003.00	Spring, Valve	2
72	23.040010.00	Bolt, Rocker Arm	2
73	45.040001.00	Retainer, Intake Valve Spring	1
74	45.040007.00	Retainer, Exhaust Valve Spring	1
75	45.040008.00	Rotator, Exhaust Valve	1
76	46.040004.00	Guide Plate, Push Rod	1
77	46.040016.00	Shaft, Rocker Arm	1
78	46.040201.00	Retainer, Rocker Arm	1
79	46.040009.00	Rocker Arm, Intake Valve	1
80	46.040018.00	Rocker Arm, Exhaust Valve	1
81	1.97.1.06	Washer Ø6	2
82	22.040012.00	Screw, Valve Adjustment	2
83	1.6177.1.06	Lock Nut M6, Flange	2
84	21.040021.00	Nut M6 x 0.5, Lock	2
85	2.01.008	Stud Bolt M6 x M8 x 105	2
86	46.130002.20	Gasket, Insulator	1
87	45.130001.00	Insulator, Carburetor	1
88	46.130003.20	Gasket, Carburetor	1
89	48.131000.10	Carburetor	1
90	46.130004.20	Gasket, Air Cleaner	1
91	1.6177.06	Flange Nut M6	3
92	46.091100.03	Base, Air Cleaner	1
93	45.091002.20	Seal, Air Cleaner	1
94	45.091001.20	Separator, Air Cleaner	1
95	45.091003.20	Element, Air Cleaner	1
96	46.091200.04	Cover, Air Cleaner	1
97	1.5789.0835	Flange Bolt M8 x 35	2
98	45.125100.00	Starter Motor Assembly	1
99	45.125200.03	Relay, Starter, Three Gear	1
100	1.93.05	Lock Washer Ø5	2
101	1.16674.0516	Flange Bolt M5 x 16	2
102	45.110001.00	Shaft, Governor Arm	1
103	2.03.019	Washer Ø8.2 x Ø17 x 0.8	1
104	2.11.006	Oil Seal Ø7 x Ø14 x 5	1
105	45.110008.00	Pin, Shaft	1
106	45.110003.01	Arm, Governor	1
107	2.08.040	Bolt M6 x 21, Governor Arm	1
108	45.110006.00	Rod, Governor	1
109	45.110005.00	Spring, Throttle Return	1
110	45.110007.00	Spring, Governor	1
111	46.080300.20	Air Guide, Upper	1
112	48.131017.01	Main Jet, Standard	1
	48.131017.01.01	Main Jet, Altitude	/
113	46.091000.03	Air Cleaner Assembly	1
114	46.061000.00	Recoil Assembly	1
115	45.040013.00	Lifter, Exhaust Valve	1