



SETUP

	For a video showing how to set up the Control Stainer, visit: www.wagnerspraytech.com/controlstainer150
---	--

MATERIAL PREPARATION

	Material to be sprayed may need to be strained to remove any impurities in the paint which may enter and clog the system. Impurities in the paint will give poor performance and a poor finish.
	Latex paints and primers are not recommended to be used with this sprayer.



SPRAYABLE MATERIALS

- Sealers
- Transparent stain
- Semi-Transparent stain
- Lacquer (thinning may be necessary)
- Urethanes
- Decorative paints (thinning may be necessary)

*THINNING THE MATERIAL

Before spraying, the material being used may need to be thinned with the proper solvent as specified by the material manufacturer. Never exceed the thinning advice given by the coating manufacturer.

If thinning is necessary, use the proper solvent as specified by the material manufacturer. Never exceed the thinning advice given by the coating manufacturer.

	Only thin the material if absolutely necessary to improve spray performance. Optimal spray performance should be achieved simply by adjusting the various controls on the unit.
	Do not thin with materials that have a flashpoint below 100°F (38°C).

SETUP



For a video showing how to set up the Control Stainer, visit:
www.wagnerspraytech.com/controlstainer150

ASSEMBLY



NEVER point the spray gun at any part of the body.
Make sure the power cord is unplugged.

1. Stir the spraying material thoroughly.
2. Fill the container. Use a strainer to remove any particles.
(see **Thinning the Material**, previous page, if thinning is required).
3. Align the pickup tube -
 - A If spraying downward, the angled end of the pickup tube should be pointing toward the front of the nozzle.
 - B If spraying upward, the angled end of the pickup tube should be pointing toward the rear of the nozzle.



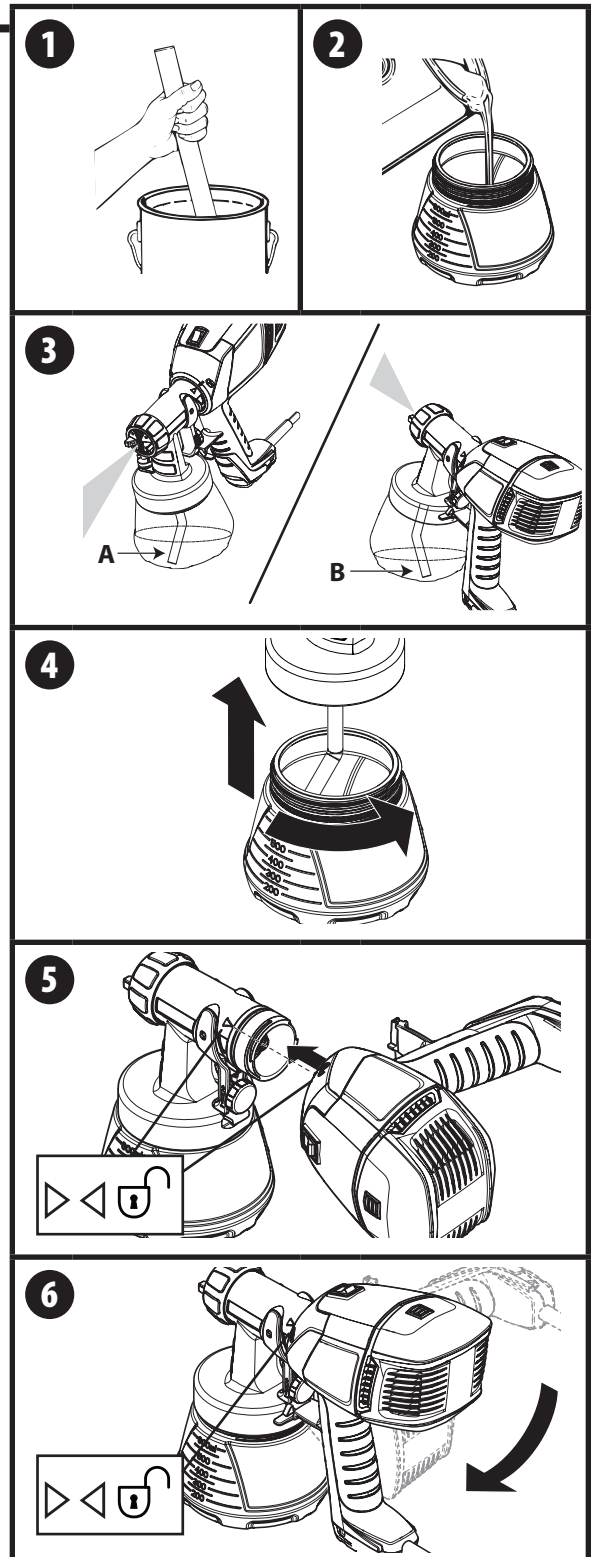
Make sure the pickup tube is inserted as far as it will go to ensure a tight fit.

4. Carefully screw the cup back onto the nozzle assembly. Tighten firmly.
5. Align the arrow on the nozzle with the "unlock" symbol on the spray gun handle.
6. Insert and twist the nozzle into the handle toward the "lock" symbol on the handle. The tab below the trigger will lock the two pieces into place.

IMPORTANT:

If the unit has already been used, make sure the nozzle seal is in place (see page 10).

Do not pull trigger at any time if the turbine is not running. Paint will drip from the nozzle.



SPRAYER CONTROLS



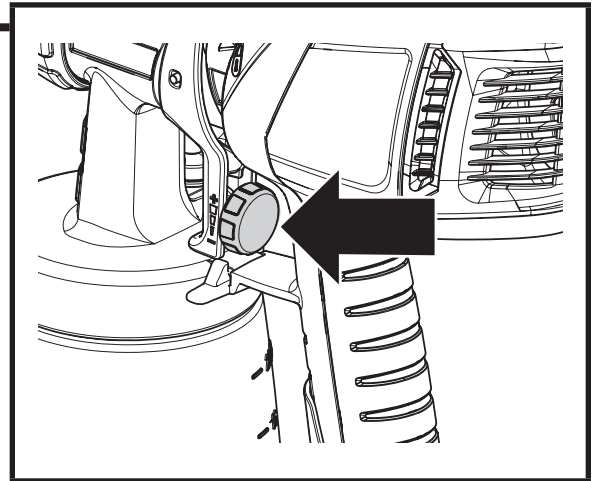
For a video showing Control Stainer 150 spraying tips and best practices, visit:
www.wagnerspraytech.com/controlstainer150

MATERIAL FLOW CONTROL



The material flow control will be factory-set at its lowest setting out of the box. Adjust as needed.

- Turn the knob out (counterclockwise) for less flow. Generally, low material flow is needed for spraying smaller surface areas, such as corners, lattice, or spindles.
- Turn the knob in (clockwise) for increased flow. Generally, high material flow is needed for spraying large surface areas, such as fences and decks.



AIR CAP / PATTERN ADJUSTMENT



Adjust the spray pattern by turning the air cap ears.

The air cap position will determine the movement direction of the spray gun.

1. Round pattern:

Use up and down, or side to side spraying motion, depending upon the object being sprayed.

2. Vertical pattern:

Use side-to-side motion during spraying.

3. Horizontal pattern:

Use up and down motion during spraying.

