



PICTURE INDICATES
APPROPRIATE DECAL
APPLICATION LOCATION

MM-E1000

ELECTRIC MINI BIKE OWNER'S MANUAL

THIS OWNER'S MANUAL CONTAINS IMPORTANT INFORMATION.
READ THOROUGHLY BEFORE RIDING FOR THE FIRST TIME.

ELECTRIC MINI BIKE MM-E1000



OWNER'S MANUAL

Monster Moto

620 Monster Moto Trail | Ruston, LA 71270 | 855-833-6483
support@monstermoto.com | www.monstermoto.com



**IF YOU HAVE PROBLEMS, DO NOT RETURN TO STORE!
CONTACT MONSTER MOTO AT 855-833-6483
OR SUPPORT@MONSTERMOTO.COM!**

Failure to follow the instructions in this manual could result in serious injury or death. Failure to follow the instructions in this manual could also prevent the mini bike from operating properly.

This owner's manual contains important information. Each rider of the mini bike must read this owner's manual thoroughly before riding the mini bike for the first time and must always follow all of the instructions outlined in this manual. This manual must remain with the vehicle if the vehicle is transferred to a new owner. Do not discard this owner's manual as it must be reviewed by each rider prior to his or her operation of the vehicle. If a minor is operating the vehicle, it is the responsibility of the minor's guardian to ensure that the minor understands the information contained in this manual.

This manual contains the latest product information available before printing. You may view the most recent version of this owner's manual online at www.monstermoto.com. Due to product improvements or production changes, there could be discrepancies between the information contained in this owner's manual and actual product specifications. Monster Moto reserves the right to make changes to its products at any time without notice and without obligation to make the same or similar changes to any vehicle previously built or sold.

© Monster Moto, LLC

No part of this publication may be reproduced or copied without written permission from Monster Moto.

TABLE OF CONTENTS

INTRODUCTION	3
LAWS & REGULATIONS	4
MAINTENANCE REQUIREMENTS	4
SAFETY	5
GETTING STARTED	7
BASIC OPERATION	9
MAINTENANCE PROCEDURES	12
BRAKES	12
TIRES	13
DRIVE CHAIN	14
APPEARANCE & CARE	15
WARRANTY	16
SPECIFICATIONS	18
REGISTRATION	19

INTRODUCTION

Congratulations on the purchase of your new Monster Moto electric mini bike! We hope that your new mini bike provides years of fun experiences and epic moments. Monster Moto is dedicated to providing you with an exceptional experience. If you are not happy with your mini bike, don't return it! Instead, contact Monster Moto customer service at 855-833-6483 or support@monstermoto.com, and we will do our best to provide you with outstanding customer support.

Since owning a mini bike requires regular maintenance and upkeep, the information contained in this owner's manual will be understood best by our customers who are mechanically inclined. If you ever have questions about servicing or maintaining your mini bike, do not hesitate to reach out to Monster Moto customer service for help. Our goal is to provide you with a seamless ownership experience! When contacting Monster Moto customer service, please have your vehicle identification number (VIN) handy to help us best assist you. Below is a list of resources which we believe you will find helpful as a mini bike owner:

- » **Warranty Information:** Your mini bike is covered by a 90-day limited warranty. Please see the *Warranty* section of this owner's manual for complete warranty information. If you would like to submit a warranty claim, please contact Monster Moto customer service.
- » **Maintenance & Troubleshooting Resources:** Visit Monster Moto online for videos and step-by-step instructions on how to perform basic maintenance procedures on your mini bike, including battery replacement, fuse replacement, and brake, chain, and tire maintenance. Detailed product specifications are also available online. Keeping our product specifications and maintenance procedures at monstermoto.com allows us to always provide you with the most up-to-date information.
- » **Replacement Parts:** If you would like to order replacement parts for your vehicle, contact Monster Moto customer service. A parts list is not contained in this owner's manual.
- » **Service Centers:** In the instance that you have a problem with your mini bike and need to have it serviced, visit www.monstermoto.com to find an Authorized Monster Moto Service Center near you. If you cannot find one, please contact Monster Moto customer service and we will find one to suit your needs.
- » **Registration:** Register your e-mini bike with Monster Moto to help us serve you better in the instance that you reach out to us with product questions or concerns! See the last page of this manual for details.

Congratulations again on your purchase, and we hope you enjoy your mini bike for many years to come!

Happy Trails,
Your friends at Monster Moto

LAWS & REGULATIONS

It is the responsibility of any rider of this vehicle to be familiar with and fully comply with all laws, rules, and regulations governing the operation of this vehicle. Laws vary by jurisdiction. Monster Moto has no responsibility or liability for the costs to comply with all applicable laws and regulations or for mini bike damage or human injury resulting from an owner or operator's failure to follow all relevant laws and regulations. These laws include, but are not limited to:

- » **Vehicle Operation Laws:** It is illegal to operate this off-road vehicle on public streets, roads, and highways. It is illegal to operate this vehicle under the influence of drugs or alcohol, even on private property. Other vehicle operation laws might apply in your area.
- » **Vehicle Title & Registration Laws:** You may need to title and/or register your new mini bike with one or more government agencies. You are solely responsible for titling and/or registering your mini bike and for all related costs. Keep your mini bike's Certificate of Origin; it may be required to title and/or register your vehicle.
- » **Vehicle Maintenance Laws:** Always follow all relevant vehicle maintenance laws, which include, but are not limited to, laws regulating the handling and disposal of flammable and dangerous materials such as batteries.

MAINTENANCE REQUIREMENTS

Maintenance requirements are a normal part of owning and operating a mini bike. The operator of the mini bike is responsible for properly maintaining the vehicle and for understanding when and how the mini bike must be serviced. The exact timing in which maintenance procedures must be performed will vary based on the type of maintenance, riding conditions, and riding frequency. The maintenance procedures outlined in this manual are simply guidelines for how and when to perform basic maintenance procedures. Other than the procedures referenced in this manual, there are other more complicated maintenance procedures which may need to be performed on your mini bike during your ownership of the product.

Failure to maintain your vehicle could prevent the mini bike from operating properly and could also result in harm or fatal injury to the rider or others. Monster Moto has no responsibility or liability for the costs to maintain the vehicle (unless explicitly covered by warranty) or for mini bike damage or human injury resulting from an owner or operator's failure to service and maintain the mini bike properly.

SAFETY

The MM-E1000 mini bike has the potential to cause serious injury or death.

Although the risks associated with riding a mini bike can never be eliminated completely, following all of the instructions contained in this manual will reduce the risk of harm to the operator and others. Any rider of the mini bike must always review and follow the instructions outlined in this manual. It is not possible to warn the mini bike owner or operator of all possible hazards associated with operating and maintaining a mini bike. All operators must exercise good judgment in operating and maintaining the vehicle. Monster Moto has no responsibility or liability for mini bike damage or human injury resulting from an owner or operator's failure to safely operate or service the vehicle.

⚠ WARNING: Do not operate the mini bike without the front fuse and side battery box covers in place and securely fastened.

⚠ WARNING: Never allow children under the age of 14 to ride the mini bike. The mini bike is designed for riders who are 14 or older. Riders younger than age 14 should not operate the mini bike.

⚠ WARNING: Never allow unsupervised or unqualified minors to ride the bike. If the operator of the mini bike is a minor, the rider's guardian is responsible 1) for ensuring that the rider meets the physical and developmental levels necessary to safely ride the bike and 2) for supervising the minor while he or she is riding the bike.

⚠ WARNING: Always wear protective safety gear while riding the mini bike. Always wear a helmet approved and tested by an agency that is independent of the helmet manufacturer. Recommended safety gear includes, but is not limited to: a full-face motorcycle helmet with a chin strap, goggles, boots, gloves, long riding pants with hip and knee pads, and a long sleeved riding jersey with elbow, chest, and shoulder pads.

⚠ WARNING: Always secure hair while riding the mini bike. Loose hair has the potential to get caught in the mini bike. Always keep hair tightly secured while operating the bike.

⚠ WARNING: Always wear shoes when riding the mini bike. Always wear closed toed shoes. Never ride barefooted or with sandals. Ensure laces are tied and secured away from the mini bike wheels.

⚠ WARNING: Never operate the bike under the influence of alcohol or drugs. The use of alcohol and/or drugs will impair the rider's ability to safely operate the mini bike.

⚠ WARNING: Never operate the mini bike with a passenger. The mini bike is designed for one rider at a time. There are no passenger pegs, handles or seat room for a passenger. Riding with a passenger can interfere with the driver's ability to operate the mini bike.

PROBLEMS? DO NOT RETURN TO STORE! CALL US AT

⚠ WARNING: Never ride the mini bike on hard surfaces.

The mini bike's tires are designed for operation in dirt, gravel, or similar materials and are not stable on any hard surfaces including, but not limited to, concrete or asphalt.

⚠ WARNING: Never ride the mini bike at night.

The mini bike is not equipped with lights.

⚠ WARNING: Never ride the mini bike alone.

Because unexpected situations can occur, always ride in proximity of your base and of other people who can provide assistance in case of a problem.

⚠ WARNING: Never ride the mini bike if it is not in proper riding condition.

Always inspect your mini bike before you ride to ensure that it is in proper riding condition. If you have any indication that your mini bike is not running correctly, stop riding immediately. Do not ride your mini bike back to your base. Find another method of transportation.

⚠ WARNING: Always exercise good judgment while riding the mini bike.

It is the responsibility of the operator of the mini bike to use sound judgment in the operation and use of the vehicle. Ride within your skill level at comfortable speeds. Be cautious of potential hazards and difficult terrain. Always keep both hands and feet on the handlebars and foot pegs. Do not brake or accelerate while turning. Do not attempt tricks or stunts or go off jumps.

⚠ WARNING: Never modify the mini bike or attach after-market accessories.

Modifications and after-market accessories reduce the rider's ability to control and ride the mini bike safely. Monster Moto is not liable for any damage or injury caused by any after-market accessory.

⚠ WARNING: Always perform the necessary maintenance on the vehicle.

Failure to perform necessary maintenance on the vehicle could result in harm or fatal injury to the operator or others.

⚠ WARNING: Always exercise caution while servicing the mini bike.

Recognize the risk that injury could potentially occur while you are servicing your mini bike and always use good judgment. Wear the necessary protective gear. If you are uncomfortable with the risks, refer to an Authorized Monster Moto Service Center to perform maintenance tasks for you.

⚠ WARNING: Never perform maintenance on the vehicle while it is running.

Always ensure that the electric mini bike is off before performing maintenance. Never touch any moving part of the mini while the mini bike is running.

⚠ WARNING: Always wash hands after handling the mini bike.

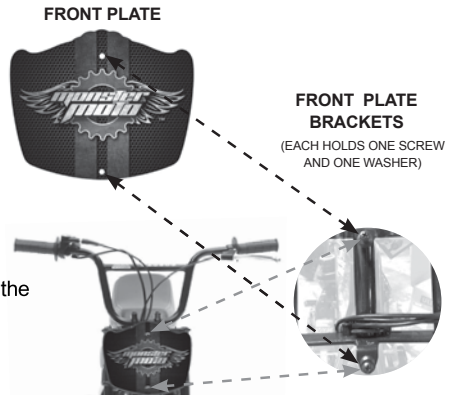
Certain components of this product and package contain chemicals known to the State of California to cause cancer, birth defects, or other reproductive harm.

GETTING STARTED: ASSEMBLING & CHARGING THE E-MINI BIKE

After you remove the mini bike from its packaging, there are several steps you need to take in order to prepare your mini bike for its first use.

ATTACHING THE FRONT PLATE

1. Park your mini bike on a firm, level surface.
2. Locate the front plate, which was included in the mini bike parts bag.
3. Remove the two screws and two washers from the front plate brackets.
4. Using the washers and screws removed in step 2, mount the front plate to the front plate brackets.

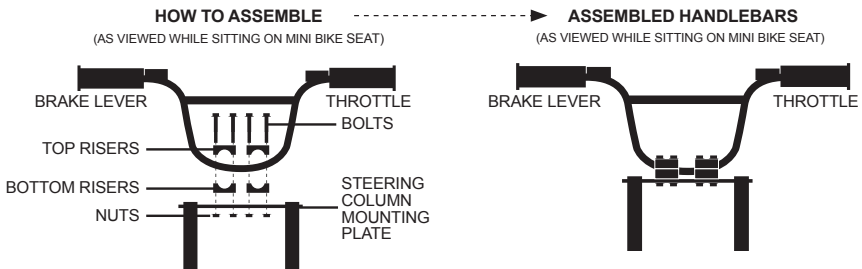


ATTACHING THE HANDLEBARS

1. Park your mini bike on a firm, level surface.
2. Locate the handlebar assembly hardware, which was included in the mini bike parts bag.



3. The diagram below illustrates how to attach the mini bike's handlebars to the mini bike.



4. Once the handlebars are attached according to the diagram above, sit on the mini bike to ensure the handlebars are in an appropriate position. Tighten the bolts when you are comfortable with the placement of the handlebars. Do not over-tighten.

PROBLEMS? DO NOT RETURN TO STORE! CALL US AT

APPLYING THE DECALS - MM-E1000 ELECTRIC MINI BIKE

Your mini bike comes without decals applied and are included in the box. In order to apply to decals to the mini bike, you will need the following items:

- Spray bottle of window cleaner
- Rubber squeegee, body putty spreader or credit card
- Dry rag or paper towel
- Soft surface such as a towel, sheet of cardboard, or rug

Once you have secured the items above, follow the steps below to add the decals to the electric mini bike!

1. Place your mini bike in the proper position. For the side decals, gently place the mini bike on its side. Use the soft surface you secured in the steps above to avoid scratching the bike and the floor. For the front plate decal, the park the mini bike upright on a firm, level surface.
2. Spray window cleaner on the plastic part on which the decal will be applied. Squeeze the spray lever quickly and fully so that the spray comes out in a fine mist. Cover the entire area.
3. Remove the applicable decal from the decal sheet and place the decal lightly on the applicable plastic part. The window cleaner will provide a slippery surface allowing for the decal to be moved to the final location.
4. Once the decal is placed in the proper position, slide the squeegee from the center of the decal out to the side. To keep the decal from moving when you move the squeegee over the decal, you may have to press down on one side of the decal with your finger. Continue to squeeze out the window cleaner and air bubbles from between the decal and the plastic with the squeegee, working from the center of the decal out to all sides.
5. With a dry rag or paper towel, dry the surface of the decal and the surrounding area making sure all of the window cleaner has been forced out from between the decal and plastic piece on which it is applied.
6. Repeat the steps above for all decals.

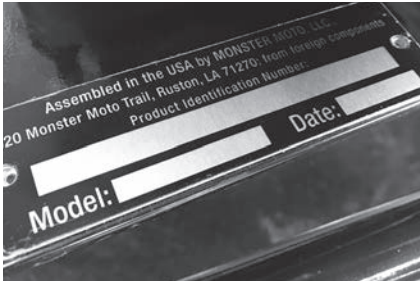
CHARGING THE E-MINI BIKE FOR THE FIRST TIME

For safety reasons, the battery is not connected to the mini bike at the factory and must be attached before charging. You can find the battery wire terminals at the front of the main battery/motor box, (the front cover is not installed to give easy access to the terminals.) The terminals are white with a red and a black wire. Firmly plug in the wire terminals and position the wires as shown in the image on pg. 9. **NOTE:** There may be a small and brief spark when connecting the terminals, this is normal. **INSTALL THE FRONT COVER WITH THE 4 SCREWS AND WASHERS PROVIDED. MAKE SURE ALL SCREWS ARE SECURELY FASTENED.**

NOTE: You can purchase additional battery packs from Monster Moto and swap out depleted batteries for extended run times.

Refer to the Basic Operation section of this manual for instructions on how to charge your mini bike. The first time you charge your battery it must be fully charged. While it will be tempting to charge the e-mini for a short amount of time to be able to ride it sooner, failure to fully charge the e-mini during its first charge cycle will severely shorten the run time as the battery ages and will limit the number of recharges the battery will take. Your mini bike will be ready to ride when the indicator light on the charger turns green.

BASIC OPERATION OF THE E-MINI BIKE



VEHICLE IDENTIFICATION NUMBER
(ETCHED INTO METAL PLATE ON BOTTOM OF MINI BIKE)



BATTERY CHARGING PORT



THROTTLE & ON/OFF SWITCH
(WITH CHARGE INDICATOR LIGHTS)



REAR BRAKE LEVER



FOOT PEGS



KICKSTAND



SIDE PLATE
(BATTERY ACCESS)



FRONT PLATE



CONNECT AND POSITION BATTERY WIRES
AS SHOWN BEFORE INSTALLING
FRONT COVER PLATE



FUSE PLATE COVER



THE 30 AMP MAIN FUSE
IS LOCATED BEHIND THE
FUSE PLATE COVER IN A
WEATHER PROOF RUBBER
FUSE HOLDER

CHARGING YOUR MINI BIKE

1. Make sure the on/off switch located on the right throttle handle is in the off position, red button out, all LED lights on indicator are off.
2. Locate the charger and find the battery charging port on the front of the battery/engine cover.
3. Insert the charger plug into the charging port, it is designed to fit in one way.
4. Plug the other end of the charger into a standard 110-volt household outlet.
5. Continue to charge the e-mini bike until the light on the charger is green. Remove the charger from bike once green light appears. Extending charging time will not extend operating time and may cause damage to the battery. If the battery will not accept a full charge, it must be replaced.
6. Unplug charger from wall, disconnect the charger from port, once charging is complete.
7. Store the battery charger in a safe place until next use.

INSPECTING YOUR MINI BIKE

Before turning on and riding your mini bike, inspect the vehicle to ensure it is in proper operating condition:

- » Inspect the mini bike's frame for cracks or bends.
- » Examine the tires for proper inflation and to detect excessive wear.
- » Ensure all wires are properly connected.
- » Visually inspect the entire mini bike for damage.
- » Test to ensure that the brake and the throttle are working properly.
- » Inspect all nuts, bolts, and fasteners to ensure they are properly tightened.
- » Ensure that the handlebars turn smoothly.
- » Ensure that the front and side box covers are in place and securely fastened.

Complete any maintenance procedures which are necessary to ensure your mini bike is in proper riding condition. Do not ride your mini bike if it is not in operating condition. Call Monster Moto customer service to remedy any problems you find.

STARTING YOUR MINI BIKE

1. If your mini bike is charging, unplug the e-mini bike's charger from the charging port. Unplug the charger from the wall outlet and store in a safe place until next use before attempting to ride the bike.
2. Turn on the mini bike by pressing the power button on the right handlebar throttle assembly, the red button is in and the LED lights are on.
3. Use your foot to disengage the kickstand, and you are ready to ride!

RIDING YOUR MINI BIKE

- » **To Go:** The speed of the mini bike is controlled by the throttle. To make the mini bike move forward, ensure no pressure is put on the brake lever and begin to twist the throttle (engaging the brake cuts the power from the battery). Twisting the throttle towards the rider increases the speed of the mini bike and releasing pressure from the throttle causes the mini bike to gradually slow down until it comes to a stop. The throttle is spring loaded and will return to the closed position (motor idle) when all pressure is removed. Because this is an electric product, small movements of the throttle produce an instant response of the motor. Do not suddenly twist the throttle without being prepared.
- » **To Stop:** To stop or slow the mini bike, release the throttle and squeeze the rear brake lever firmly and smoothly. The more braking pressure you apply, the quicker you will slow down and stop. When you come to a stop, put your foot down to balance the mini bike.

PARKING YOUR MINI BIKE

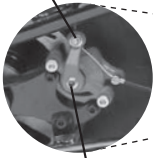
1. When you have finished riding, use your foot to lower the kickstand. The kickstand will keep the mini bike upright when it is parked.
2. To shut off the bike, press the red button on the right handlebar throttle assembly, the red button is out and all of the LED lights are off.

STORING YOUR MINI BIKE

Store the mini bike on a flat surface sheltered from the elements. Storing the mini bike in the sun, wind, rain, or snow or in similar conditions will damage the battery and will reduce the lifespan of the vehicle.

BRAKES

ADJUSTING NUT



BRAKE MECHANISM



ADJUSTING THE BRAKES

If you cannot stop your mini bike properly, you will most likely need to adjust its rear disc brake. You will also need to adjust the brake as part of your regular maintenance routine, as regular use of the mini bike will cause the brake to loosen over time.

Follow the steps below to complete a brake adjustment:

1. Park the mini bike on a firm, level surface and turn the engine stop switch to the "off" position.
2. Using a wrench, loosen the adjusting nut.
3. Pivot the brake mechanism toward the front of the mini bike until there is a very small amount of tension on the pivot arm. This is the optimal position for your brake. Do not rotate the brake mechanism as far forward as it can go, as this will cause your brake to be constantly engaged.
4. Using a wrench, tighten the adjusting nut.
5. Carefully lift up the back of the bike while holding the remainder of the bike steady. Do not apply the brake lever. Spin the back wheel to ensure that it spins freely. If it does not spin freely, repeat steps 1 through 4 above. This time, do not rotate the brake mechanism so far forward.
6. Lower the mini bike back to the ground and apply the brake lever. Without starting the mini bike, try to roll it forward. If the back wheel does not rotate, your brakes are properly adjusted. If the back wheel is still spinning (even slightly), repeat steps 1 through 5 above. This time, rotate the brake mechanism farther towards the front of the mini bike.

TIRES

INSPECTING YOUR TIRES

Regularly perform an in-depth inspection of your tires as part of your maintenance routine. Park the mini bike on a firm, level surface and turn the engine stop switch to the “off” position. Look for bumps or bulges in the sidewall of the tire and inside of the treads. Look closely for cuts, slits or cracks. Check for signs of excessive wear. Check for rocks, screws, nails or other objects embedded in the tires or tread. Replace all tires before the tread depth gets below .12 inches or anytime you notice a reduction in traction. Remove any foreign objects. Replace any tire if you can see a fabric or cord showing through or if there are any bumps or bulges.

Inspect your rims. If you notice the rims are bent or dented, take your mini bike to the nearest Authorized Monster Moto Service Center. Never ride with a bent or dented rim.

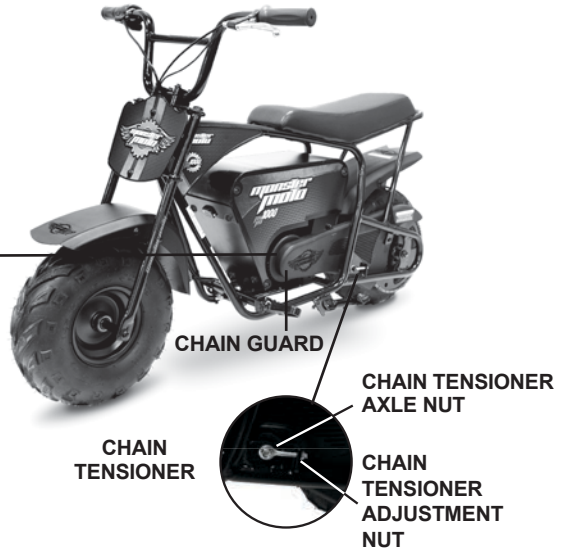
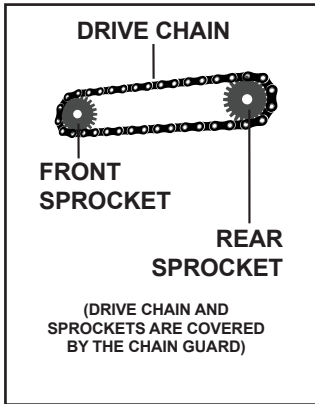
ADDING AIR TO YOUR TIRES

The mini bike's tires should be inflated to 10 psi in order for the mini bike to operate properly. As part of your regular maintenance routine, use a tire pressure gauge to check the air pressure in both of the tires. If necessary, use a hand pump or an electric air pump to inflate the tires to the recommended level. Always check the air pressure when your tires are cold. If you check the air pressure when the tires are warm, you will receive an artificially high reading. Never check or add air to your tires while the mini bike is running.

REPAIRING YOUR TIRES

Your mini bike has tubeless tires. If your tire has been damaged, take it to an Authorized Monster Moto Service Center to have it repaired immediately. If the tire is damaged beyond repair, please call us at 855-833-6483 or email us at support@monstermoto.com to purchase a replacement tire. Monster Moto will also help direct you to an Authorized Monster Moto Service Center who can install the replacement tire for you.

DRIVE CHAIN



ADJUSTING THE DRIVE CHAIN

The drive chain needs to have a small amount of slack to operate properly. No slack or excessive slack in a drive chain can cause damage to the bike. Normal use of the mini bike will cause the chain to stretch over time, therefore it is necessary to adjust the tension on the chain as part of routine maintenance. Follow the following procedure to adjust the drive chain slack:

1. Park the mini bike on a firm, level surface and turn the engine stop switch to the "off" position.
2. Reach over the top of the chain guard and pull upward on the drive chain midway between the sprockets. The vertical movement of the drive chain should measure approximately 1/2 of an inch.
3. Repeat the previous step along several points of the drive chain. The slack should remain constant throughout. If it does not, follow the steps below to make an adjustment.
4. Loosen both the axle nut and the chain tensioner adjustment nut.
5. Slide the axle nut either forward (towards the front of the bike) to loosen the drive chain or backward (towards the back of the bike) to tighten the drive chain. Adjust the tensioner until there is approximately 1/2 an inch drive chain slack.
6. Tighten the axle nut and the chain tensioner adjustment nut.
7. If the chain tensioner is as tight as possible and slack still remains, the chain is worn beyond its service limit. Contact Monster Moto customer service for assistance or take your mini bike to an Authorized Monster Moto Service Center.

LUBRICATING THE DRIVE CHAIN

The drive chain needs to be properly lubricated in order for the mini bike to operate properly. Normal use of the mini bike will cause the chain to dry and rust over time, therefore it is necessary to lubricate the chain as part of routine maintenance. Follow the steps below to lubricate the drive chain:

1. Park the mini bike on a firm, level surface and turn the engine stop switch to the "off" position.
2. Using chain lubricating oil or any lightweight lubricating oil, apply oil to the drive chain visible on the rear sprocket with either a spray on applicator or an oil can. Take a rag and wipe off any excess oil with a rag.
3. Rotate the rear tire until there is a new length of the drive chain visible on the rear sprocket. Repeat step 2 above to lubricate the new length of the drive chain.
4. Repeat steps 2 and 3 until you are comfortable that the entire drive chain has been lubricated.

APPEARANCE & CARE

You may clean your mini bike using water, mild neutral detergents, and/or mild spray cleaners. Avoid using products that contain harsh detergents or chemical solvents that can damage the mini bike's metal, paint, and plastic. Monster Moto recommends that you use a garden hose and a soft sponge to wash your mini bike, as high pressure washers and harsh brushes can damage certain parts of the mini bike. To avoid damaging the mini bike, never aim water directly at the battery box or surrounding components. Never wash the mini bike while the power is on. Always lubricate the drive chain after cleaning and drying the mini bike.

WARRANTY

WHAT IS COVERED

Monster Moto warrants only to the original retail purchaser of this product that this product is free from defects in material and/or workmanship for a period of ninety (90) days from the date of purchase. At Monster Moto's sole discretion, Monster Moto agrees to either repair, provide replacement parts for, or replace without charge, any product or component having a material defect, except as limited below. Monster Moto may require the purchaser to return to Monster Moto, at the purchaser's expense, the part(s) or product component(s) claimed to be defective for Monster Moto's inspection and sole determination of defect. At that time, the returned part(s) or product component(s) become the property of Monster Moto and will not be returned.

WHAT IS NOT COVERED

This warranty does not cover any conditions caused by misuse, neglect, negligence, accident, or operation in any way contrary to the operating instructions located in the owner's manual. Damage to the product resulting from normal wear and tear, alteration or modification of the product, improper or inadequate maintenance, use of unauthorized replacement parts, or service provided by anyone other than an Authorized Monster Moto Service Center is not covered under this warranty. This warranty does not cover minor surface blemishes, rips, tears, or other cosmetic damages due to normal use, or due to intentional or unintentional damage to the product. This limited warranty will not cover any damage which results from the application of improper cleaners, solvents, or chemicals to the product, from smoke or soot, or from exposure to saltwater, sea breeze, or salt. This limited warranty will not cover any damage resulting from storing the product with exposure to the elements. Without limiting the above, this warranty is void with respect to any product that has sustained damage resulting from impacts, accidents, or uses considered by Monster Moto to be outside of the scope of normal and safe operation, including, but not limited to, performing tricks, stunts, or jumps.

LIMITATIONS OF LIABILITY

This warranty is non-transferable after the product's initial sale. Any unapproved modifications to the product or its performance will void this limited warranty. This warranty does not cover products used for rental or commercial purposes, nor does it cover products used in competition. This limited warranty covers only the cost of replacing and/or repairing parts which have a manufacturer's defect in material or workmanship. This warranty does not cover the cost of transportation, towing, lost time, inconvenience, or any incidental or consequential damages of any type. This limited warranty does not cover costs resulting from improper repairs or mis-diagnosis of problems. Monster Moto makes no other warranty of any kind, express or implied. All implied warranties of merchantability and fitness for a particular purpose which exceed the obligations and time limits stated in this warranty are disclaimed and excluded from this warranty. You may have additional or different rights under your state's laws.

OWNER'S RESPONSIBILITIES

As the mini bike owner, you are responsible for ensuring all required maintenance is performed on your product. You are also responsible for maintaining a record of and all receipts for maintenance performed on your product. Your warranty claim may be denied solely due to your failure to ensure the completion of all scheduled maintenance or keep the maintenance records or receipts.

KEEP YOUR RECEIPT

Proof of purchase will be required to substantiate any warranty claim. As the mini bike owner, warranty coverage may be denied if your mini bike or one of its parts has failed due to abuse, neglect, improper maintenance, or unapproved modifications.

SPECIFICATIONS

POWER: Powerful 1000 W motor with rechargeable and replaceable 14 Ah 36 V battery pack (3 12V batteries)

RUN TIME: Continuous 45 min

MAXIMUM SPEED: 17 mph

STARTER TYPE: Easy on and off switch

BRAKE TYPE: Hand operated cable actuated rear disc

TIRES & WHEELS: 145/70-6 off-road tubeless pneumatic tires with steel rims

WHEELBASE: 35.5"

SEAT HEIGHT: 23"

ASSEMBLED DIMENSIONS: 110 lb / 50.0" L x 26.0" W x 33.0" H

PACKAGED DIMENSIONS: 127 lb / 49.9" L x 13.8" W x 25.5" H

MAXIMUM WEIGHT: 180 lbs

RECOMMENDED AGE: 14 +

NOTE: The battery charger has been tested and found to comply with the limits for a Class B digital device, pursuant to Part 15 of the FCC Rules. These limits are designed to provide reasonable protection against harmful interference in a residential installation. This equipment generates, uses and can radiate radio frequency energy and, if not installed and used in accordance with the instructions, may cause harmful interference to radio communications.

However, there is no guarantee that interference will not occur in a particular installation. If this equipment does cause harmful interference to radio or television reception, which can be determined by turning the equipment off and on, the user is encouraged to try to correct the interference by one or more of the following measures:

- Reorient or relocate the receiving antenna.
- Increase the separation between the equipment and receiver.
- Connect the equipment into an outlet on a circuit different from that to which the receiver is connected.
- Consult the dealer or an experienced radio/TV technician for help."



855-833-6483 OR EMAIL US AT SUPPORT@MONSTERMOTO.COM!

**ELECTRIC MINI BIKE
MM-E1000
PRODUCT REGISTRATION**



Monster Moto

620 Monster Moto Trail | Ruston, LA 71270 | 855-833-6483
support@monstermoto.com | www.monstermoto.com



Please help us serve you better by registering your new mini bike. You may register your product by calling us at 855-833-6483, by emailing us at info@monstermoto.com, or by mailing the registration form below to us at 620 Monster Moto Trail, Ruston, LA 71270.

This informational registration will only be processed by Monster Moto to help serve you better. By filling out this registration, you are not registering your product with any state or federal government agency. Users of the product are responsible for ensuring that they follow titling/registration laws in their area.

PERSONAL INFORMATION

Name _____ Age _____

Address _____

City _____ State _____ Zip _____

Email _____

Home Phone (____) _____ Cell Phone (____) _____

Gender _____ Occupation _____

How did you hear about the product? _____

Have you owned a similar product before? _____

PRODUCT INFORMATION

Purchase Date _____ Purchased From _____

Vehicle Identification Number (VIN)

**IF YOU HAVE PROBLEMS,
DO NOT RETURN TO STORE!**

**CONTACT MONSTER MOTO AT
855-833-6483
OR
SUPPORT@MONSTERMOTO.COM!**

**Monster Moto will handle all service,
warranty, and return arrangements.**



Monster Moto

620 Monster Moto Trail | Ruston, LA 71270 | 855-833-6483
support@monstermoto.com | www.monstermoto.com

