

Attachment Mount Kit

2011 and After Zero-Turn-Radius Riding Mower

Model No. 131-3966

Installation Instructions

▲ WARNING

CALIFORNIA

Proposition 65 Warning

This product contains a chemical or chemicals known to the State of California to cause cancer, birth defects, or reproductive harm.

Safety

▲ DANGER

An engine becomes hot while it operates. Severe burns can occur from contacting hot surfaces of the engine.

Allow the engine, especially the muffler, to cool before touching.

The following list contains safety information specific to Toro products and other safety information you must know.

- Become familiar with the safe operation of the equipment, with the operator controls, and safety signs.
- Follow the manufacturer's recommendations for adding or removing wheel weights or counterweights to improve stability.
- Slow down and use extra care on hillsides. Be sure to travel in the recommended direction on hillsides. Turf conditions can affect the stability of the machine. Use extreme caution while operating near drop-offs.
- Keep all movement on slopes slow and gradual. Do not make sudden changes in speed, directions, or turning.
- Use care when loading or unloading the machine into a trailer or truck.
- Keep hands and feet away from moving parts. Do not make adjustments with the engine running.
- Stop on level ground, disengage the drives, chock or block the wheels, and shut off the engine before leaving the operator's position for any reason.

Towing Safety

- Do not attach towed equipment except at the hitch point.
- Follow the attachment manufacturer's recommendation for weight limits for towed equipment and towing on slopes.
- Never allow children or others in or on towed equipment.
- On slopes, the weight of the towed equipment may cause loss of traction and loss of control. Reduce towed weight and slow down.
- Stopping distance increases with the weight of the towed load. Travel slowly and allow extra distance to stop.
- Make wide turns to keep the attachment clear of the machine.
- Do not tow a load that weighs more than the towing machine.

Safety and Instructional Decals



Safety decals and instructions are easily visible to the operator and are located near any area of potential danger. Replace any decal that is damaged or lost.



131-4036

1. Maximum draw bar pull 36 kg (80 lb).
2. Read the *Operator's Manual*.



Installation

Loose Parts

Use the chart below to verify that all parts have been shipped.

Description	Qty.	Use
Stabilizer bracket (For 2015 and newer models)	1	Install the attachment mount.
Carriage bolt (5/16 x 3/4 inch)	2	
Locknut (5/16 inch)	4	
Self-tapping screw (5/16 x 3/4 inch)	2	
Bolt (5/16 x 1 inch)	2	
Pivot frame	1	
Hairpin cotter	2	
Rod	2	
Washer	2	
Draw-bar decal	1	

Note: The stabilizer bracket is only used on 2015 and newer models (Figure 1).

Installing the Attachment Mount

For 2015 and Newer Models Only

Note: The stabilizer bracket is used only on 2015 and newer models (Figure 1).

1. Install the stabilizer bracket to the engine guard using 2 carriage bolts (5/16 x 3/4 inch) and 2 locknuts (5/16 inch) (Figure 1).

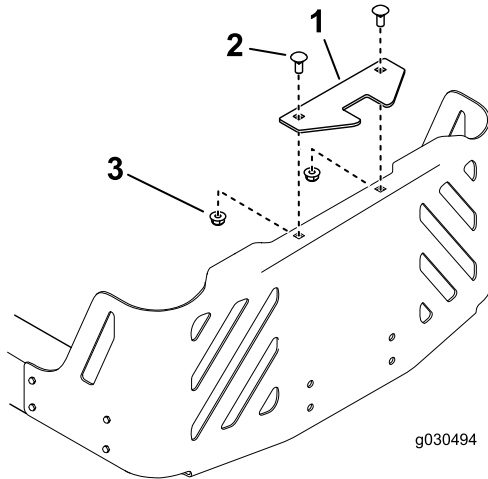


Figure 1

2015 model shown

1. Stabilizer bracket
2. Carriage bolt (5/16 x 3/4 inch)
3. Locknut (5/16 inch)

2. Install the pivot frame to the machine frame as shown in Figure 2. Secure the pivot frame to the machine frame using 2 bolts (5/16 x 1 inch) and 2 locknuts (5/16 inch).

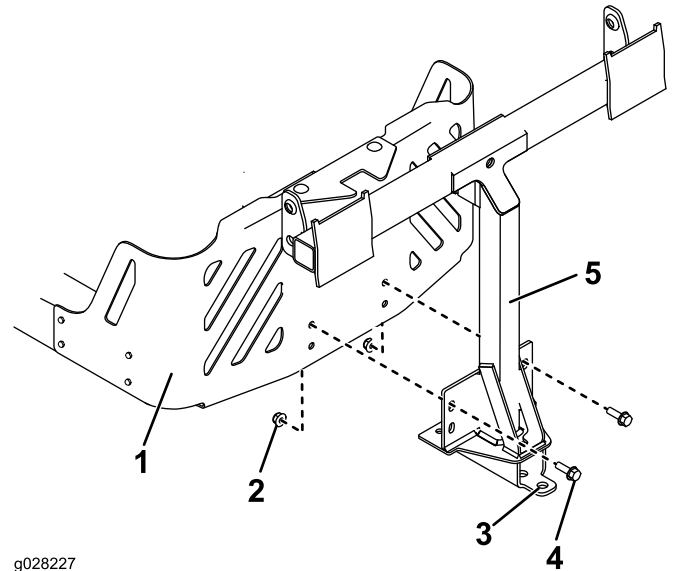


Figure 2

1. Machine frame
2. Locknut (5/16 inch)
3. Hole
4. Bolt (5/16 x 2-1/2 inch)
5. Pivot frame

3. Secure the pivot frame to the bottom of the machine frame using 2 self-tapping screws (5/16 x 3/4 inch) as shown in Figure 3.

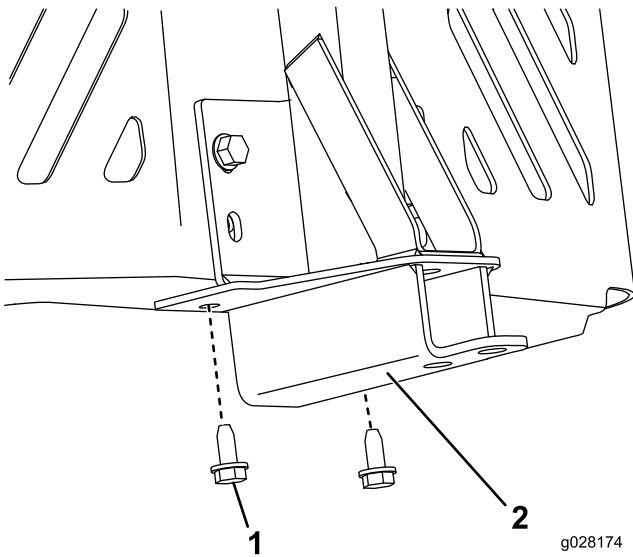


Figure 3

1. Self-tapping screw (5/16 x 3/4 inch)
2. Pivot frame

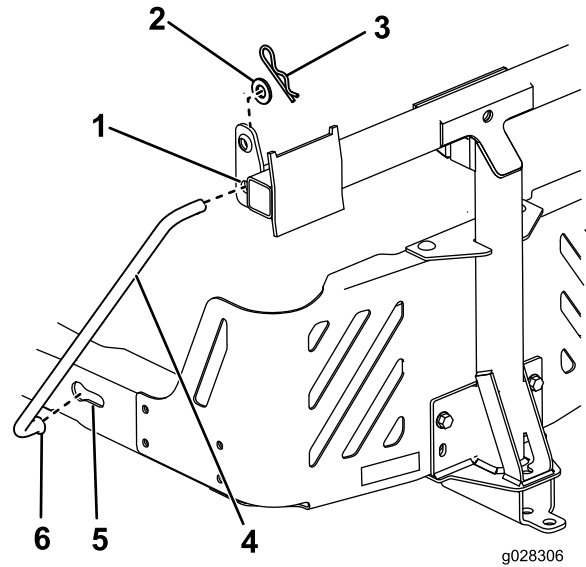


Figure 5

Left side shown

- | | |
|---------------------|----------------------------|
| 1. Pivot frame hole | 4. Support rod |
| 2. Washer | 5. Keyed slot, existing |
| 3. Hairpin cotter | 6. Bent, flared end of rod |

4. Attach the draw bar decal 1.3 cm (1/2 inch) to the left of the attachment mount (Figure 4).

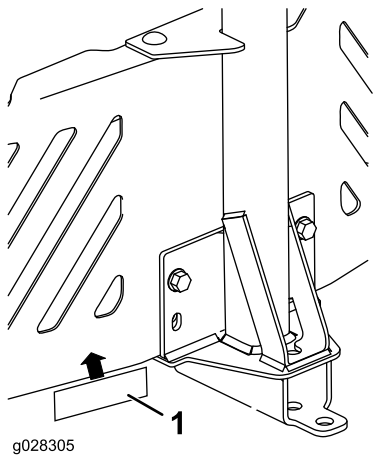


Figure 4

1. Draw bar decal

6. Insert the bent ends of the rods into the attachment mount as shown in Figure 5 and secure the end of each rod with a washer and hairpin cotter.

For 2011 through 2014 Models Only

Note: The stabilizer bracket is not used on 2011 through 2014 models.

Note: For 2011 through 2014 models, the rear-engine guard is optional for this kit.

1. Install the pivot frame to the machine frame as shown in Figure 6. Secure the pivot frame to the machine frame using 2 bolts (5/16 x 1 inch) and 2 locknuts (5/16 inch).

5. Install the bent, flared end of a rod into the keyed slot in the left side of the machine frame, and move the rod rearward to seat it in the frame (Figure 5).

Note: Repeat this step for the right side of the machine.

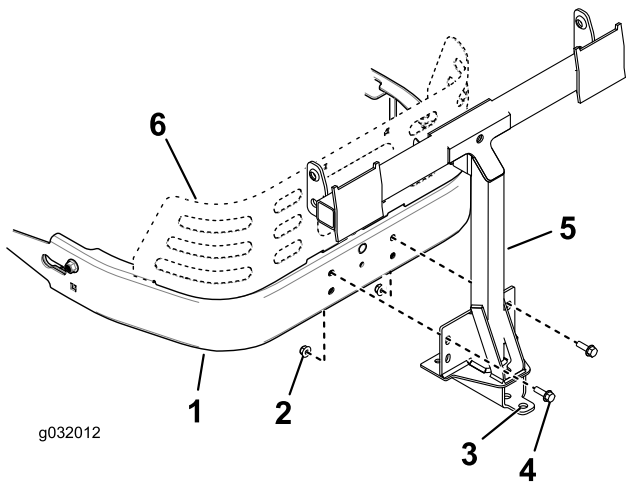


Figure 6

- | | |
|------------------------|---------------------------------|
| 1. Machine frame | 4. Bolt (5/16 x 2-1/2 inch) |
| 2. Locknut (5/16 inch) | 5. Pivot frame |
| 3. Hole | 6. Rear-engine guard (optional) |

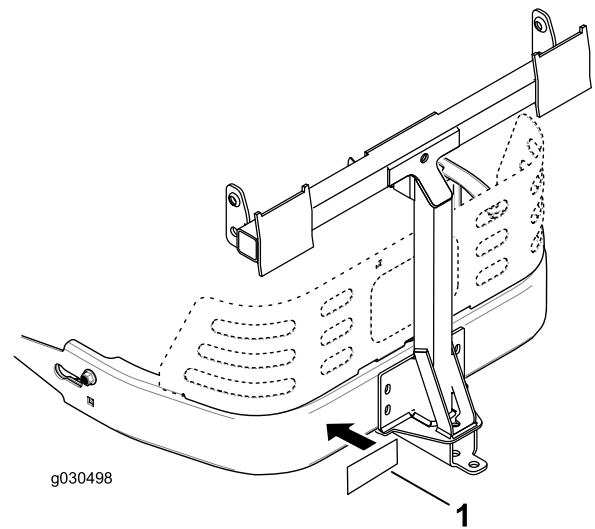


Figure 8

1. Draw bar decal

2. Secure the pivot frame to the bottom of the machine frame using 2 self-tapping screws (5/16 x 3/4 inch) as shown in [Figure 7](#).

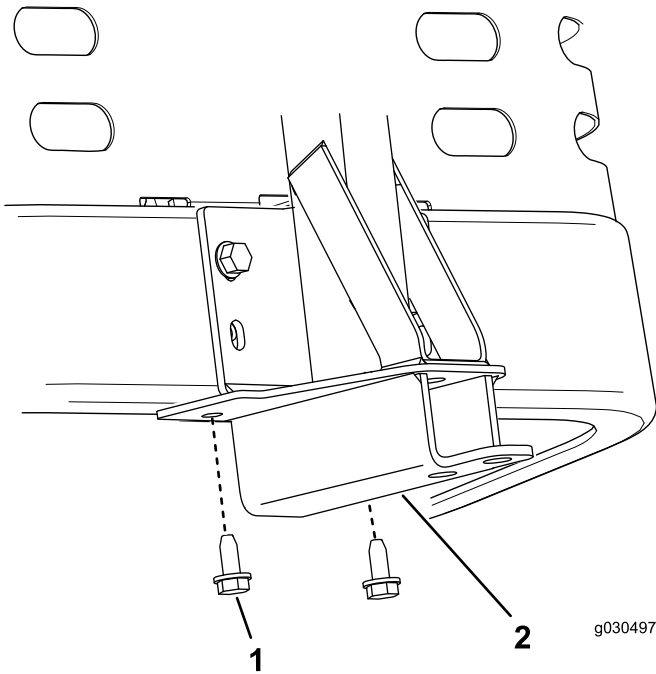


Figure 7

- | | |
|---|----------------|
| 1. Self-tapping screw (5/16 x 3/4 inch) | 2. Pivot frame |
|---|----------------|

3. Attach the draw-bar decal 1.3 cm (1/2 inch) to the left of the attachment mount ([Figure 8](#))

4. Install a bent, flared end of a rod into the keyed slot in the left side of the machine frame, and move the rod rearward to seat it in the frame ([Figure 9](#)).

Note: Repeat this step for the right side of the machine.

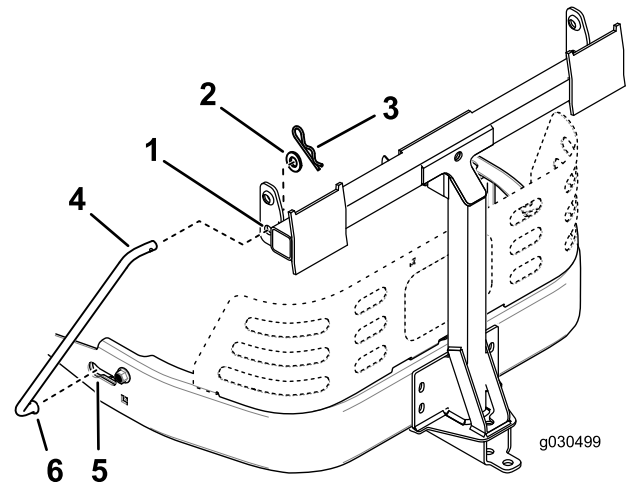


Figure 9
Left side shown

- | | |
|---------------------|------------------------------------|
| 1. Pivot-frame hole | 4. Support rod |
| 2. Washer | 5. Keyed slot (existing) |
| 3. Hairpin cotter | 6. Bent, flared end of support rod |

5. Insert the bent ends of the rod into the attachment mount as shown in [Figure 9](#) and secure the end of each rod with a washer and hairpin cotter.

Operation

Note: Determine the left and right sides of the machine from the normal operating position.

⚠ WARNING

To avoid personal injury, follow these procedures:

- Become familiar with all operating and safety instructions in the *Operator's Manual* for the mower before using this attachment.
- Always shut the engine off and wait for all moving parts to stop before clearing an obstruction from the bagging system.
- Never do maintenance or repairs while the engine is running.

Using the Draw Bar

The attachment mount has a draw bar feature that you can use for towing.

- Read and understand all the operating instructions of the machine.
- When turning, slow down and observe the clearance.
- Make wide turns and keep towed equipment clear of the towing vehicle.
- The maximum draw bar pull is 36 kg (80 lb).
- Excessive draw bar pull may cause hydrostatic transmission failure.

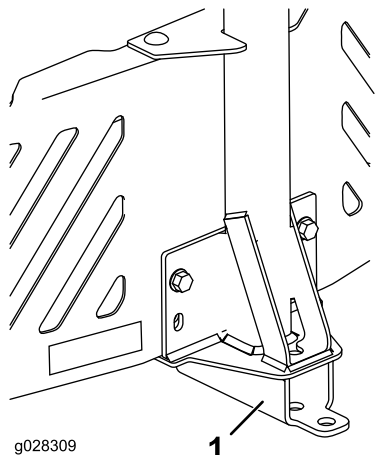


Figure 10

1. Attachment mount with draw bar

Notes:

Notes:

Notes: