

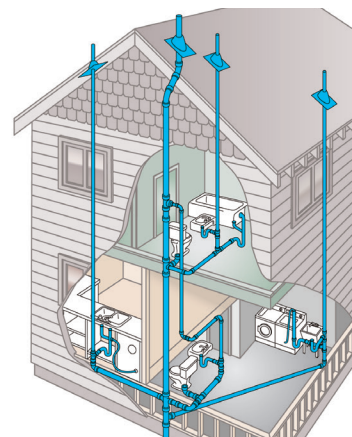
INSTRUCTION GUIDE

SURE-VENT AAV



Before you install an AAV, check with your local municipality to confirm it will be approved. The AAV must be installed vertically and cannot be more than 15 degrees out of level. Also determine the Drain Fixture Unit (DFU) load of the fixture or fixtures in order to choose the correct Oatey Sure-Vent AAV (see below).

- 1 Remove the protective plastic film from the AAV. Be sure to use directional fittings when installing the drains and AAV extension.
- 2 Ensure the AAV will be located a minimum of 4 inches above the horizontal branch wall tube.
- 3 Measure and cut the PVC pipe to desired length.
- 4 Chamfer and deburr the pipe ends.
- 5 Solvent weld the pipe into the provided adaptor and the top of the sanitary tee using approved Oatey primer and cement.
- 6 Wrap thread tape around the male threads of the AAV and install it into the adaptor.
- 7 Fill sink and drain completely while checking for leaks.



FIXTURE APPLICATIONS	DFU LOAD
Traditional Public Bathroom Group (Toilet (1.6 gpf), bathtub w/ shower and sink)	6
Traditional Private Bathroom Group (Toilet (1.6 gpf), bathtub w/ shower and sink)	5
Public Toilet (1.6gpf)	4
Private Toilet (1.6gpf)	3
Washing Machine	3

FIXTURE APPLICATIONS	DFU LOAD
Bathtub w/ Shower	2
Sink & Disposal	2
Dishwasher	2
Shower Stall (5.7 gpm or less)	2
Sink	2
Drinking Fountain	0.5

©2020 Oatey SCS. All Rights Reserved. This information is based on data believed to be reliable but Oatey makes no warranties, express or implied, as to its accuracy and assumes no liability arising out of its use. The data listed falls within the normal range of product properties but should not be used to establish specification limits or used alone as the basis of design. Oatey's liability to purchasers is expressly limited to the terms and conditions of sale. Oatey is trademark of Oatey Co. All other trademarks can be found www.Oatey.com.