



Thunder Mount Garage Systems

The World's Leader of Multi-fit Overhead Garage Mount Safety and Technology.
Overhead Garage Door Opener Mounting Instructions.

Tools/Items Needed:

- $\frac{9}{16}$ " socket and wrench
- $\frac{1}{2}$ " socket and wrench and a ratchet wrench
- Power Drill socket driver $\frac{1}{8}$ inch drill bit
- Six foot ladder
- Contact Cement
- Measuring tape
- Dry wall hand saw or hole saw

IN THE BOX:

Figure 1: Instructions, 1-channel, 2 cradles, 2 adjustable tubes, isolators, 1 chrome ring, and hardware.



Channel



Cradles



Hardware 9/16



Channel Lag bolts

IN THE BOX: cont.



Hardware, Chrome Ring & Adjustable tubes



Stronger, Cleaner, Easier to Adjustable Tubes.

First of it's kind Dual and Triple Vibration Isolation.



Vibration Isolator's



Isolator Washers
in two places



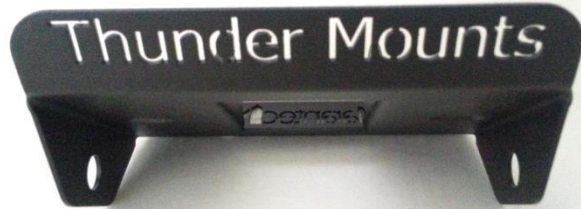
1/2 Hardware for Openers



Channel Isolator



Isolator for Thunder Mounts DC Multi-fit Base.
IN THE BOX: cont.



Thunder Mounts New Multi-fit Base Assembled. Thunder Mounts New Multi-fit DC Base

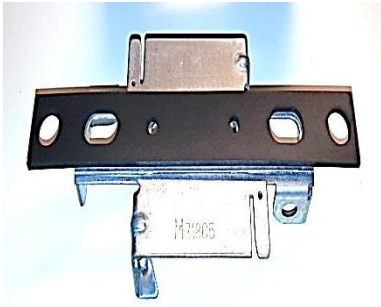


Cradles Gen 3



Thunder Mounts DC Multi-fit Base
Marantec Synergy Part (not included)
Thunder Mounts DC Isolator

Thunder Mounts Superior Strength Channels, Cradles and Tubes are made from 12 ga. steel. Our 3rd Generation Thunder Mounts now have 30 degree's of adjustability, dual and triple vibration isolation. Below Marantec's DC Adapter shown here & Thunder's DC Isolator.



line up Isolator holes.

(Marantec Adapter Not Included)

IN THE BOX: cont.

Thunder Mounts DC Multi-fit Base and Isolator fit on Marantec, Summer and other similar inclosed rails systems.

Hardware: Lay out all hardware in the order to be assembled. "This Saves Time"



#1 Base #2 Channel #3 Cradles #4 Adjustable Shafts.

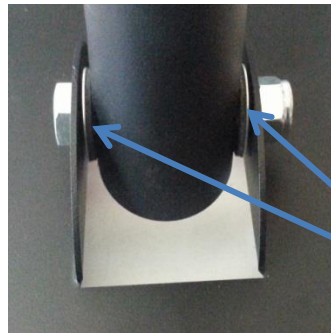
Notes: Thunder Mounts can also be pre-assembled then mounted.,

*Additional Longer Powder Coated bolts are used for the tubes
Gen 3 TM tubes to hide the bolt heads"

Thunder Mount: Mounting above the Ceiling

1. Bolt on Thunder Mounts Multi-Fit base to the Overhead Door Opener with Thunders name facing the door. #1 hardware.
1. B Attach DC Isolator to adapter from opener manufacturer. (Page 3)
Then Push adapter into the base and bolt together. #1 hardware.
2. Take the Inner tube and pass the "Power Cord" through it and bolt the tube To base with #4 hardware and Isolator Washers. Signal wires can be Passed down tubes at a later time. (See picture below)
3. Take the Outer tube passing the power cord through and bolting the tubes Together. #4 hardware.

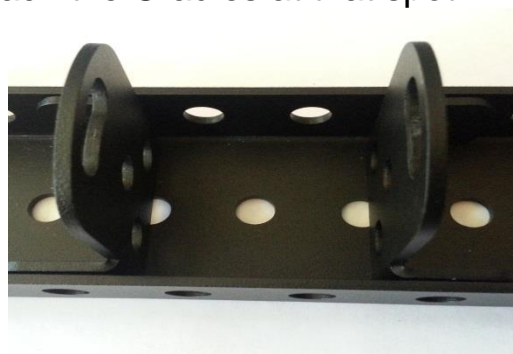
4. Locate the supports / joists above the ceiling (solid wood supports) where The Thunder Mount channel will be attached.
*(It's highly recommended to mount channels horizontal with the door).



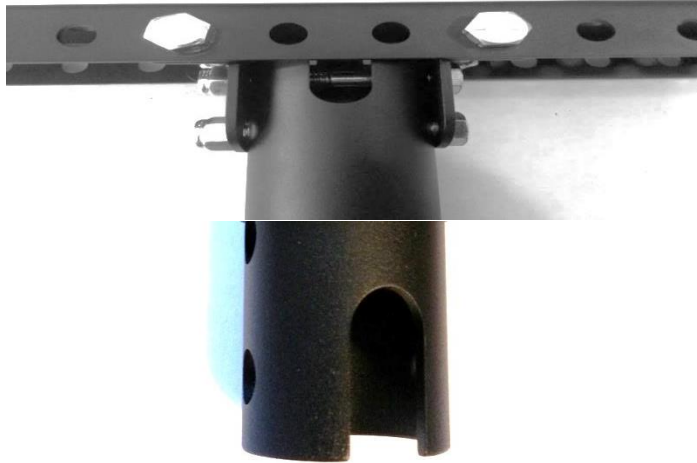
Isolator Washers

Thunder Mount Mounting above the ceiling continued.

The cradles attach to the channel in one inch increments anywhere along the channel to easily center the opener. Thunder's 30 degree of adjustability helps when you need it. Attach the Cradles at that spot.



Thunder's Tube Slots are for Power Cord and Signal Wire to pass through.

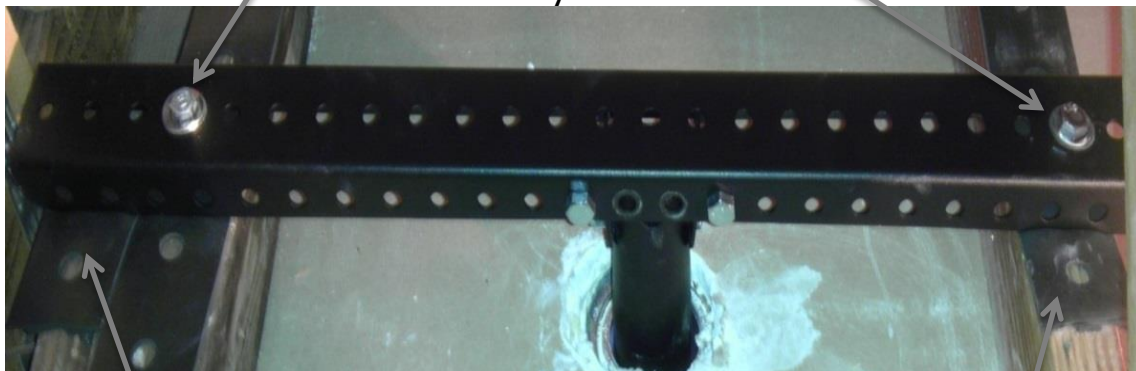


Directly below the channel cut a 2.5/8" inch hole at the exact Location for the tubes to go through the ceiling / drywall.

Thunder Mount Mounting above the ceiling continued.



Seen here is a Thunder Mount System Mounted above the



Channel Support with Bolt and Channel Isolators installed.



5. First attach the cradles to the channel above the hole where the tubes pass through the ceiling and where the channel can be supported. Cradles should be facing each other.
6. Bolt on the Cradles loosely where needed, and then tighten securely after attaching and tightening the tubes #3 hardware. This is to ensure that the tubes are flush on the cradles.
7. Drill 1/8 x 1 inch deep holes in the structure to attach the Channels. Place the Isolation strip below the channel by cutting them in half and placing the half's at the point in between where the Channel meets the supports. #2 hardware and washer isolators.

Note: It helps to have the hardware go through the holes of the Isolator. Fold in half, Cut in half and Place the Isolators pieces between the Supports and the Channel or Channels.
Fasten and tighten to supports well using #2 hardware and the washer Isolators. Secure them well.

Thunder Mount Mounting Above the ceiling continued.



7a. Place the chrome ring through the tube glue it to the ceiling after attaching the tubes.(Glue not included, contact cement works best)

You might need two people to do this next step.

Attach the shafts to the Cradles by lifting the Opener and passing the tubes, Through the ceiling and with the #3 set 3.0 x 9/16th nuts and Bolts included in the kit. Tighten the nuts and bolts to the tube then the Cradles good and tight.

8. Attach and Secure tubes with the nut and bolts
Hardware #4

“Recheck all the nuts and bolts and Re-tighten them”.

Continue the installation wiring the wall controller and door sensors passing the wires down the tubes and connecting them to the opener.

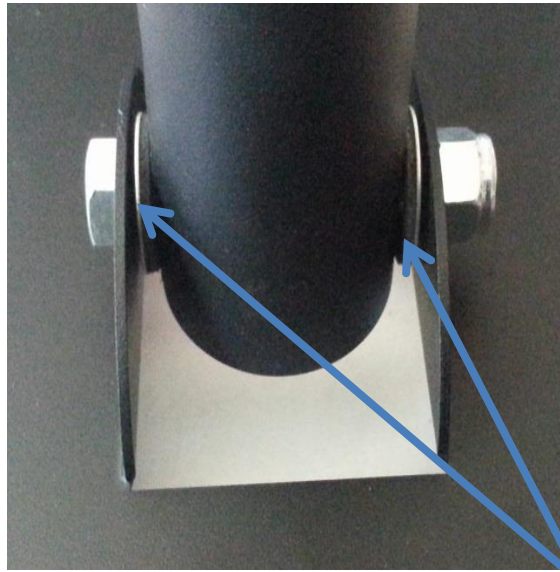
Be sure to keep wires away from moving parts.



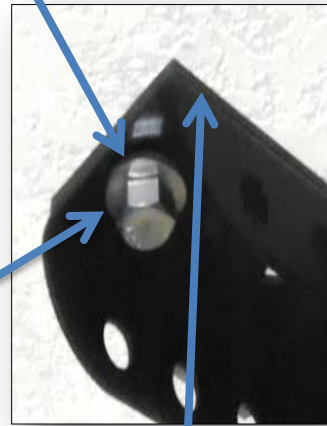
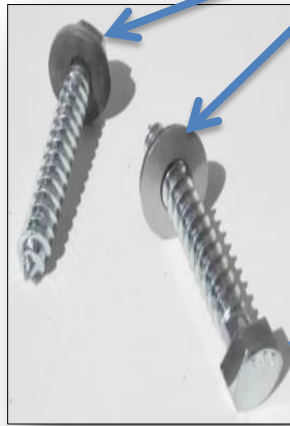
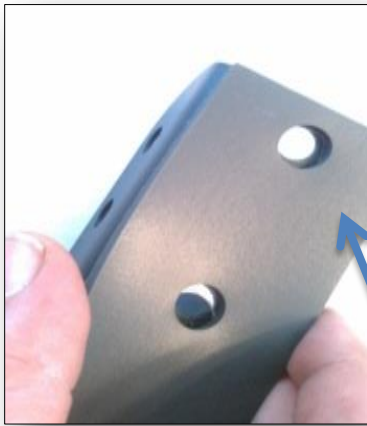
Thunder Mounts Installed Under the ceiling.

1. Attach Thunder Mounts Base to Overhead Door Opener.
#1 hardware. Refer to page #4 1.B for DC Openers.
2. Attach and bolt Inner Tube to Base and pass the “Power cord” through it. Use #4 hardware and washer isolators. Secure.

By Thunder Mounts design this assembly, vibration isolation parts, hardware and tubes must be assembled correctly to perform properly and at its full potential.



Washer Isolators



Channel Isolator

Thunder Mounts Installed under the ceiling cont.

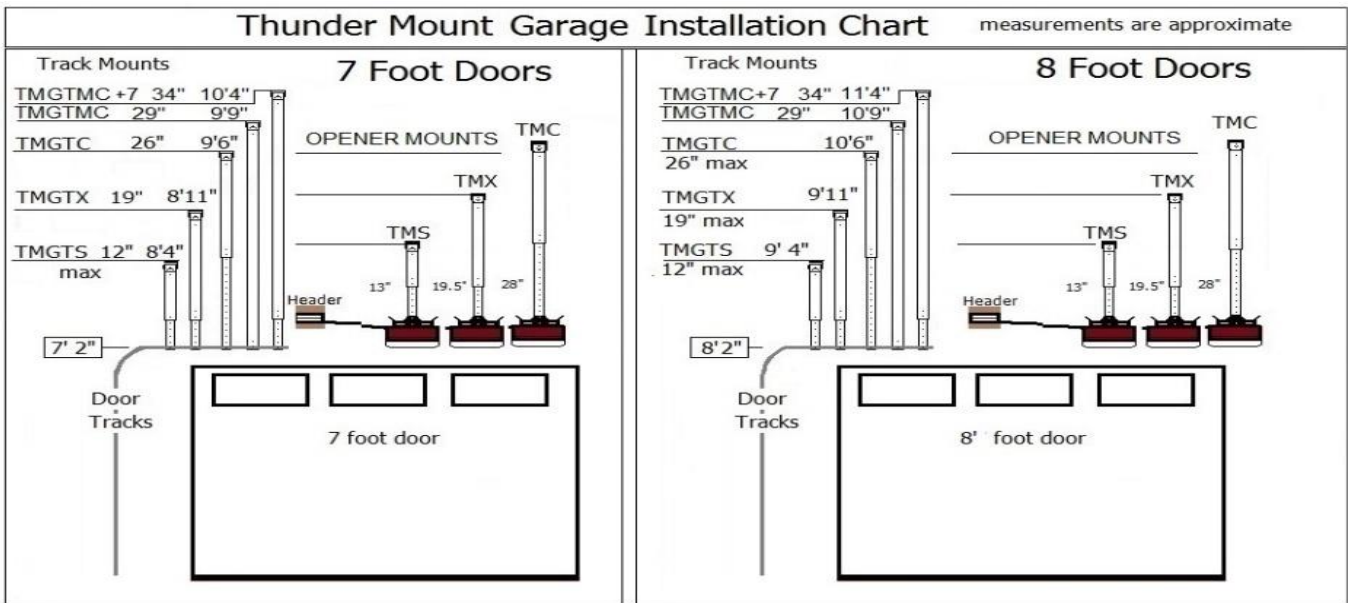
3. Locate the solid wood supports directly above from where to attach the Channel. Thunder Mounts Patented Channel and Cradle's design can be placed in two Directions depending on how your house is built, and the Cradles can be attached anywhere along the channel.

Mark that location and Pre-Drill the holes with a 1/8 inch drill Bit
And drill 1" deep.

4. Attach the Channel Square with the door with isolation

Pad and Washer isolators to Secure support structure. #2 hardware.

5. Attach the Cradle's directly Above the Opener. #3 hardware Included in the kit.
6. Place the Finish Ring over the Tube before passing the tubes Through the ceiling. Glue it after attaching the tube to cradle.
7. Attach the shafts to the cradles, secure. (#4) hardware.
8. Adjust the height. Recheck all the nuts and bolts and Secure them well!



Injury and or Property Damage can occur if Installation Instructions are not Followed Properly and Voids Any Warranty.

Thunder Mount Garage Systems LLC
The Overhead Garage Mount Solution.
Made In America.

Hours: M-F 9-5, 10-2 Sat. Closed Sunday 805-262-2895 PST.

info@thundermountgarage.com
WWW.THUNDERMOUNTGARAGE.COM