

STAIR RAILING ASSEMBLY INSTRUCTIONS

Important

- Consult your local building code official and check all code requirements. Purchaser has the sole responsibility to determine whether the aluminum railing and aluminum post products comply with applicable codes and are appropriate for the intended use. The purchaser and installer should review the intended use of the products with a licensed professional engineer to determine code compliance.
- Obtain all required building permits.
- Read all instructions thoroughly prior to assembly to assure correct installation. Manufacturer will not be held responsible for unsafe or incorrect installation.
- Instructions are guides and do not cover every installation scenario.
- Always use fasteners provided in the railing kit.
- Railing has been tested by PEI and meets 2016 IRC Construction Code Standards.
- Applying paint, other than manufacturer's touch up paint, will void warranty.
- Always wear proper safety equipment while assembling and installing.

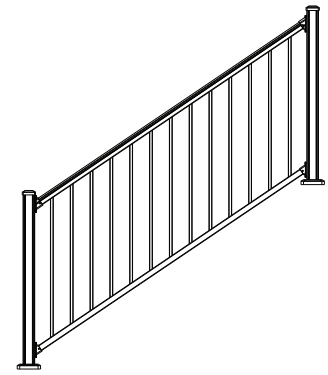
Recommended Tools

Safety Glasses, Tape Measure, Pencil, Saw w/ Fine Tooth Metal Blade, Rubber Mallet, Level, Power Drill, Philips Drive Bit, T25 Torx Drive Bit.

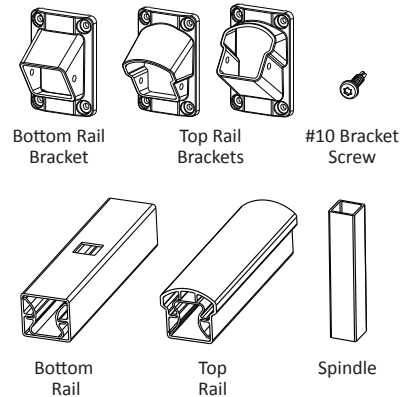
Installation - Stair Railing

Note: Ensure that posts are installed with the 1-piece post skirt in place. Skirt cannot be installed after railing installation (see Post Instructions). Rails must be positioned in the correct direction prior to cutting. If rails are not in the correct position, they may be cut incorrectly and pickets will not line up.

1. Lay bottom rail beside the post assemblies with approximately 1" clearance (use 1" spacer) between the bottom rail and the nose of the steps (Image 1).
2. Insert a picket into the last hole on each end of the bottom rail. Place the top rail on these spindles. Position the rail assembly against the posts and even the spacing on each end with the pickets parallel to the post assemblies. Clamp the rail assembly to the posts (Image 2).
3. Using the post, mark the top and bottom rails for cutting. Cut the rails 1/16" shorter than the marks on each end. This is needed to prevent the rails from scratching the posts during installation. **Note:** Cut the top and bottom rails exactly the same (Image 3). **Important:** If your post spacing is acceptable for the standard length rails provided, you will not need to cut them down as described in Steps 1 and 2.
4. Slide the bottom rail brackets onto the bottom rail. Place a 1" spacer between the bottom rail and the nose of the steps. Move the bottom rail into position and fasten the self-centering bottom rail brackets to the posts using the #10 screws provided. After installing the brackets, secure them to the bottom rail using the same #10 screws.
5. Insert pickets into each hole in the bottom rail.
6. Slide the top rail brackets onto the top rail. Hold the top rail at an angle above pickets. Starting at one end, feed each picket into the corresponding hole on the top rail (Image 4). When all pickets are in the holes, lightly tap the top of the top rail with a rubber mallet to ensure they are fully seated. Measure to ensure the final top rail height is achieved. **Note:** Due to variances, you may need to move the top rail up 1/16" to 1/8" to achieve the proper height.
7. Fasten the self-centering top rail brackets to the posts using the #10 screws provided. Secure the top rail brackets to the top rail with the same #10 screws.



Included Components



(Post Assembly sold separately)

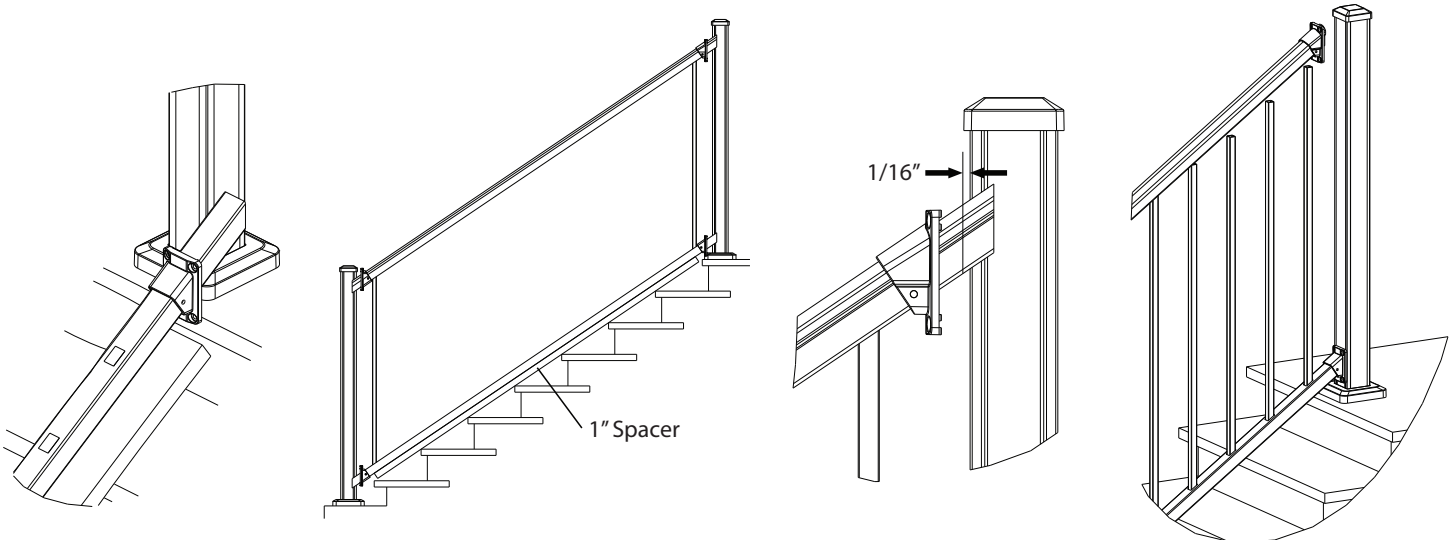


Image 1

Image 2

Image 3

Image 4