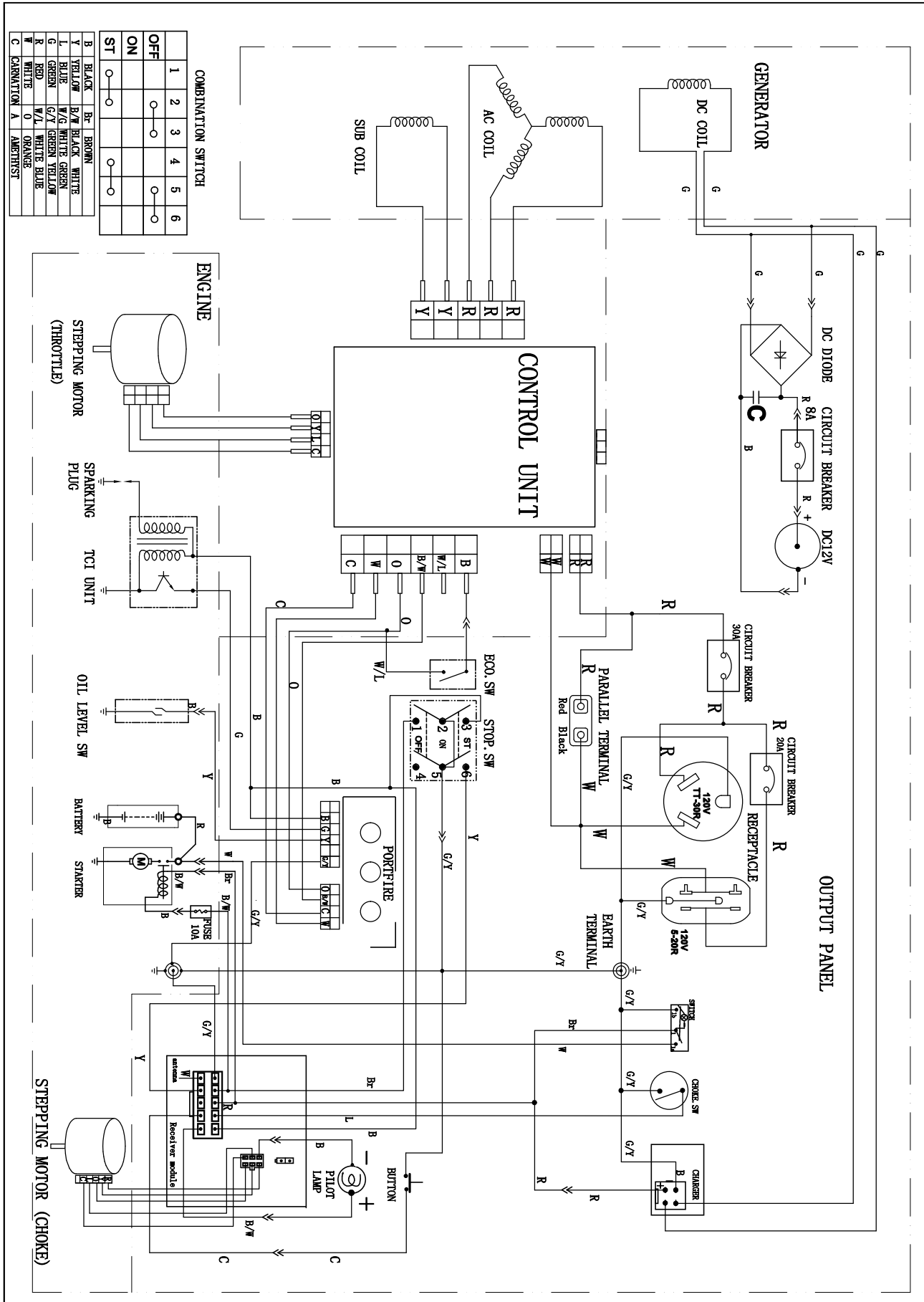
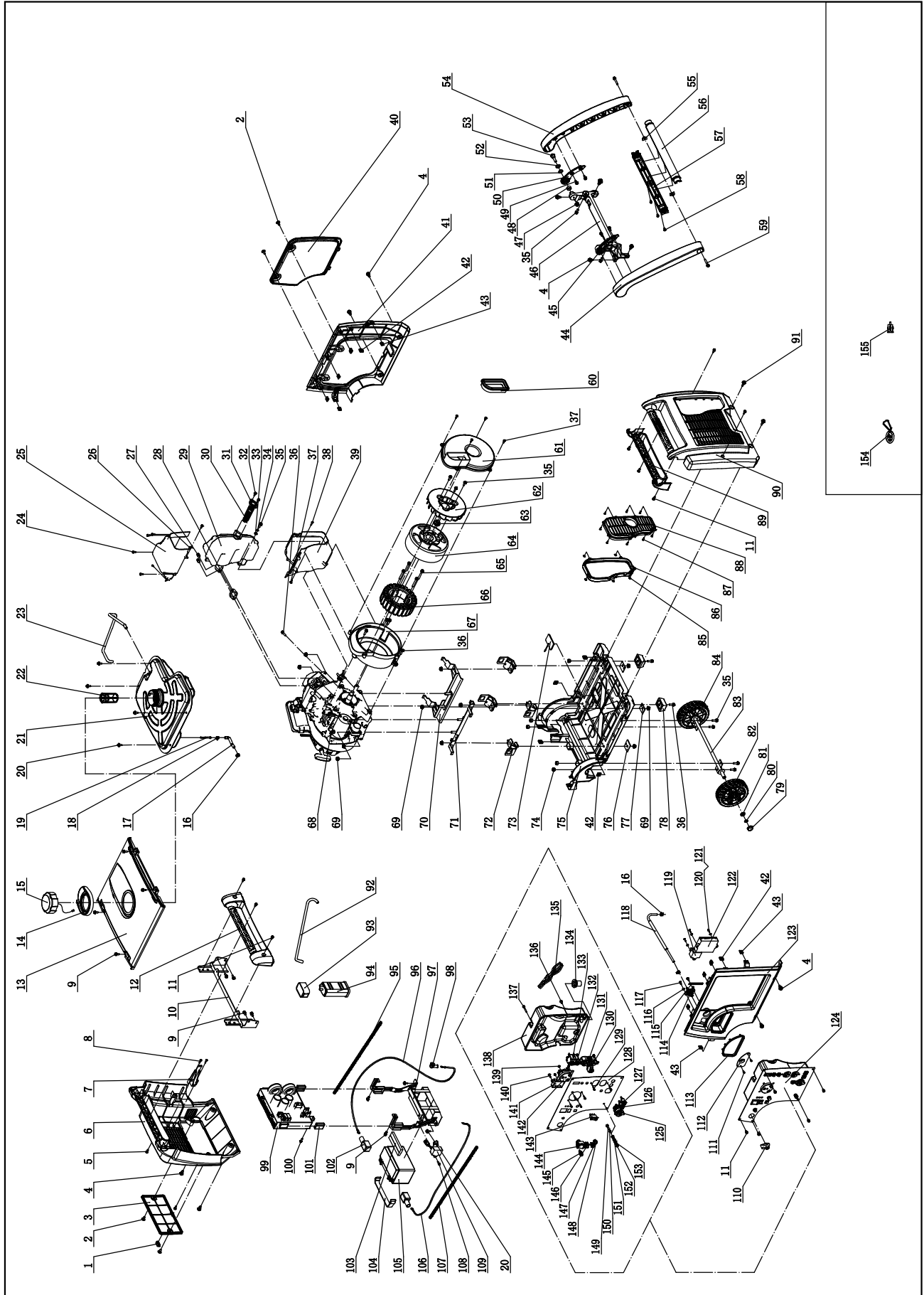


Wiring Diagram



SPECIFICATIONS

Parts Diagram



#	Part Number	Description	Qty
1	83.200205.02	Hasp, Maintenance Cover	1
2	2.08.055.1	Bolt, Maintenance Cover, Black	4
3	83.200204.02.2	Maintenance Cover, Battery, Black	1
4	2.08.052.1	Bolt M6 x 16, Black	10
5	1.9074.4.0516.1	Screw/Washer Assembly M5 x 16, Black	4
6	83.200201.02.2	Cover, Left, Black	1
7	83.200206.02	Support Arm, Canister	1
8	1.845.4216	Screw ST4.2 x 16	2
9	1.5789.0612	Flange Bolt M6 x 12	10
10	83.201600.06	Supporter, Left	1
11	1.9074.4.0512.1	Screw/Washer Assembly M5 x 12, Black	11
12	83.200701.02.2	Handle, Left, Black	1
13	83.200500.01.2	Cover, Top, Black	1
14	83.200502.01	Spillway, Fuel Tank	1
15	83.070100.01	Cap, Fuel Tank	1
16	2.06.016	Clamp, Ø8.7 x b8	3
17	83.070011.01	Fuel Pipe, Fuel Tank To Fuel Valve	1
18	2.06.018	Clamp, Ø10.5 x b8	1
19	111.070300.01	Fuel Filter, Fuel Pipe	1
20	2.08.068.2	Flange Bolt M5 x 13	6
21	83.071000.01	Fuel Tank	1
22	83.070300.01	Fuel Filter, Fuel Tank	1
23	83.070014.01	Pipe, Fuel Tank To Canister	1
24	1.845.4213	Screw ST4.2 x 13	6
25	83.081400.01	Muffler Protector Assembly, Upper	1
26	83.081004.01	Plate	1
27	2.02.001	Nut M6, Long	2
28	28.100001.00	Gasket, Exhaust	1
29	83.101100.01	Muffler Assembly	1
30	46.101300.08	Spark Arrester Assembly	1
31	46.101503.08	Plate, Spark Arrester	1
32	1.9074.4.0514	Screw/Washer Assembly M5 x 14	2
33	1.97.1.06	Washer Ø6	1
34	1.93.06	Lock Washer Ø6	1
35	1.5789.0615	Flange Bolt M6 x 15	10
36	1.5789.0620	Flange Bolt M6 x 20	6
37	1.845.4816	Screw ST4.8 x 16	6
38	1.845.4219	Screw ST4.2 x 19	1
39	83.081500.01	Muffler Protector Assembly, Lower	1
40	83.200402.01.2	Protector, Rear Cover, Black	1
41	83.200401.01.2	Supporter, Rear Cover, Black	1
42	2.02.014	Nut M6, Square	12
43	2.02.010	Cage Nut M5	8
44	83.200701.03.2	Handle, Left, Black	1
45	83.200704.01.2	Bracket, Left, Black	1
46	83.201600.05	Supporter, Right	1
47	1.6187.1.08	Lock Nut M8, Flange	2
48	2.13.001	Bushing, Ø13.3 x Ø19.3 x 8	2
49	1.5789.0612.1	Flange Bolt M6 x 12, Black	4
50	83.200704.02.2	Bracket, Right, Black	1
51	2.03.001	Bushing, Ø13.3 x Ø19.3 x 2	2
52	2.03.002	Washer Ø13 x Ø20 x 2.5	2
53	2.08.002	Bolt M8 x 28	2
54	83.200701.04.2	Handle, Right, Black	1
55	2.02.002	Nut M6, T-Style	2
56	83.200705.01.2	Handle, Upper, Black	1

#	Part Number	Description	Qty
57	83.200705.02.2	Handle, Lower, Black	1
58	1.9074.3.0512.1	Screw/Washer Assembly M5 x 12, Black	3
59	1.5789.0635.1	Flange Bolt M6 x 35, Black	2
60	83.190006.01	Rubber Sleeve, End Cover	1
61	83.190003.01	End Cover, Generator	1
62	83.190001.01	Fan, Generator	1
63	2.02.006	Flange Nut M14 x 1.5	1
64	83.191100.01	Rotor Assembly	1
65	1.5789.0645	Flange Bolt M6 x 45	4
66	83.191200.07	Stator Assembly	1
67	83.190002.01	End Cover, Motor	1
68	28.601	Engine	1
69	1.6177.1.08	Lock Nut M8, Flange	12
70	83.201600.02	Supporter, Left	1
71	83.201600.01	Supporter, Right	1
72	83.201200.01	Motor Mount	4
73	83.200607.01	Plug, Oil Drain Hole	1
74	1.6182.06	Lock Nut M6	6
75	83.200601.01	Base Setting Component	1
76	83.200609.02	Steel Plate 2	2
77	83.200609.01	Steel Plate 1	2
78	83.201400.01	Rubber Pad	2
79	83.201702.01	Plug, Wheel	2
80	1.894.1.12	Retaining Ring Ø12	2
81	1.848.12	Washer Ø12	2
82	83.201701.01	Wheel, Left	1
83	83.201500.01	Axle	1
84	83.201701.02	Wheel, Right	1
85	83.200305.01	Spring Patch	5
86	83.200304.01	Rubber Seal, Muffler Cover	1
87	1.845.3595	Screw ST3.5 x 9.5	8
88	83.200303.01.2	Muffler Cover, Black	1
89	83.200701.01.2	Handle, Right, Black	1
90	83.200302.01.2	Cover, Right Side, Black	1
91	2.08.075.1	Bolt M6 x 20	2
92	83.070013.01	Pipe, Canister To Air Cleaner	1
93	83.070702.01	Support Arm	1
94	46.070700.00	Carbon Canister, 150CC	1
95	5.1320.023	Plastic Corrugated Pipe, Ø6.8 x Ø10 x 530	1
96	5.1900.019	Red Wire, 600mm, Battery	1
97	83.200018.01	Holder, Control Unit and Battery	1
98	152.200013.01	Sheath, Rubber	1
99	83.221000.90	Control Unit, 3,1 Kw, 120V/60Hz, Wireless Parallel	1
100	1.16674.0516	Flange Bolt M5 x 16	1
101	81.220001.00	Protector, Control Unit	2
102	122.200013.01	Sheath, Rubber	2
103	83.200908.01	Fixation Bar, Sponge	1
104	122.200904.00	Pinch, Rubber	1
105	9.1000.070	Battery 7AH, 149.5 x 85 x 94	1
106	5.1900.060	Black Wire, 600mm, Battery	1
107	5.1320.022	Pipe, Ø6.8 x Ø10 x 450	1
108	1.16674.0512	Flange Bolt M5 x 12	1
109	5.1800.003	Rectifier	1
110	83.070001.01	Knob, Fuel Valve	1
111	1.823.0408.1	Screw M4 x 8, Black	2
112	83.061200.01.2	Guide Plate, Rope, Black	1
113	83.200106.02	Protector, Front Cover	1
114	83.070400.01	Fuel Valve	1
115	2.05.050	Wire Clip, 100mm	1
116	1.97.1.05	Washer Ø5	1

SPECIFICATIONS

#	Part Number	Description	Qty
117	1.845.4819	Screw ST4.8 x 19	2
118	83.070011.02	Fuel Pipe, Fuel Valve To Carburetor	1
119	5.1820.001	Charger	1
120	1.845.3516	Screw ST3.5 x 16	3
121	1.97.1.04	Washer Ø4	3
122	5.1830.006	Remote Module	1
123	83.200101.02.2	Front Cover, Black	1
124	100262.21	Control Panel Assembly	1
125	5.1110.005	Receptacle, DC 12V	1
126	83.210001.00.3	Connect Port, 125V/25A, Red	1
127	83.210001.00.1	Connect Port, 125V/25A, Black	1
128	83.019.34.45	Control Panel, Yellow	1
129	1.9074.4.0414.1	Screw/Washer Assembly M4 x 14, Black	6
130	5.1200.308	8Amp Circuit Breaker, Push Button	1
131	5.1120.010	Receptacle 5-20R, Duplex	1
132	5.1210.920	20Amp Circuit Breaker, Push Button	1
133	5.1210.930	30Amp Circuit Breaker, Push Button	1
134	122.210003.01	Jacket, Control Box	1
135	100262.21.10	Wire Assembly	1
136	1.9074.4.0512	Screw/Washer Assembly M5 x 12	1
137	1.9074.4.0535	Screw/Washer Assembly M5 x 35	1
138	83.210002.03	Control Box	1
139	1.6177.1.04.1	Lock Nut M4, Flange, Black	6
140	1.818.0514.3	Screw M5 x 14	2
141	83.210016.00	Speed Limiter	1
142	5.1120.036	Receptacle TT-30R	1
143	5.1000.000.3	Switch, Battery, Red	1
144	5.1000.001	Ignition Switch, Red	1
145	5.1040.009	Button, Throttle Control	1
146	5.1010.003.1	Switch, Economy, Black	1
147	5.1040.004	Remote Program Button	1
148	5.1460.003	Pilot Lamp	1
149	1.5783.0520.3	Bolt M5 x 20, Green	1
150	1.862.05	Lock Washer Ø5	1
151	1.97.1.05.3	Washer Ø5, Green	2
152	1.6170.05.3	Nut M5, Green	2
153	1.93.05.3	Lock Washer Ø5, Green	2
154	9.2600.000	Remote Control	1
155	9.1700.003	Plug, USB 5V/2.1A	1

This page intentionally left blank.