

## AVAILABLE REPAIR KITS

Rotary Head Kit - Major:

P/N 2100372 (DCFSCS22Z)

P/N 2100373 (DCFSCS22)

Includes items 2, 3, 4, 5, 6, 7, 8, 9, 10, 11, 12, 13, 14, 15 and 17

Rotary Head Kit - Minor:

P/N 2100203

Includes items 9, 10, 15 and 17

Complete Rotary Head Kit:

P/N 2103227 (DCFSCS22)

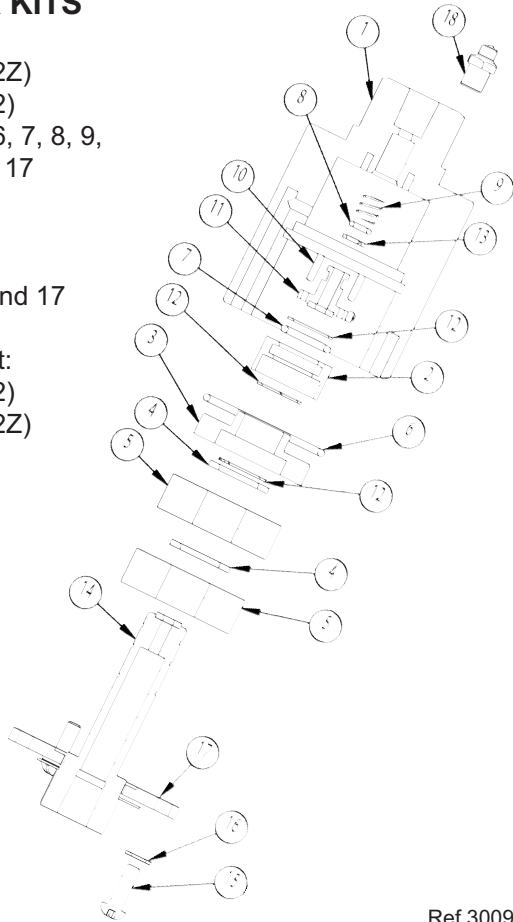
P/N 2103226 (DCFSCS22Z)

Includes all items

Replacement nozzles

for arm 2103224:

925020M (3 required)



Ref 300918 Rev. B  
05-16

| ITEM NO. | PART NO. | DESCRIPTION              | QTY. |
|----------|----------|--------------------------|------|
| 1        | 2500014  | HOUSING (DCFSCS22Z)      | 1    |
|          | 2500015  | HOUSING (DCFSCS22)       |      |
| 2        | 2520030  | RETAINER, BEARING        | 1    |
| 3        | 2520028  | RETAINER, BEARING        | 1    |
| 4        | 2520027  | SPACER, BEARING          | 2    |
| 5        | 2640004  | BEARING (DCFSCS22Z)      | 2    |
|          | 2640015  | BEARING (DCFSCS22)       |      |
| 6        | 2701012  | O-RING                   | 1    |
| 7        | 2701011  | O-RING                   | 1    |
| 8        | 2701010  | O-RING                   | 1    |
| 9        | 2720007  | SPRING                   | 1    |
| 10       | 2530008  | PIN                      | 2    |
| 11       | 2530007  | STEM, SMALL              | 1    |
| 12       | 2520029  | SNAP RING                | 3    |
| 13       | 2710000  | BACK UP RING             | 1    |
| 14       | 2520113  | STEM                     | 1    |
| 15       | 2200092  | SCREW, M5 X 16           | 3    |
| 16       | 2200050  | WASHER                   | 3    |
| 17       | 2500018  | RETAINER, BEARING        | 1    |
| 18       | 2640012  | ZERK, GREASE (DCFSCS22Z) | 1    |

# THE HAMMERHEAD PROFESSIONAL FLAT SURFACE CLEANER

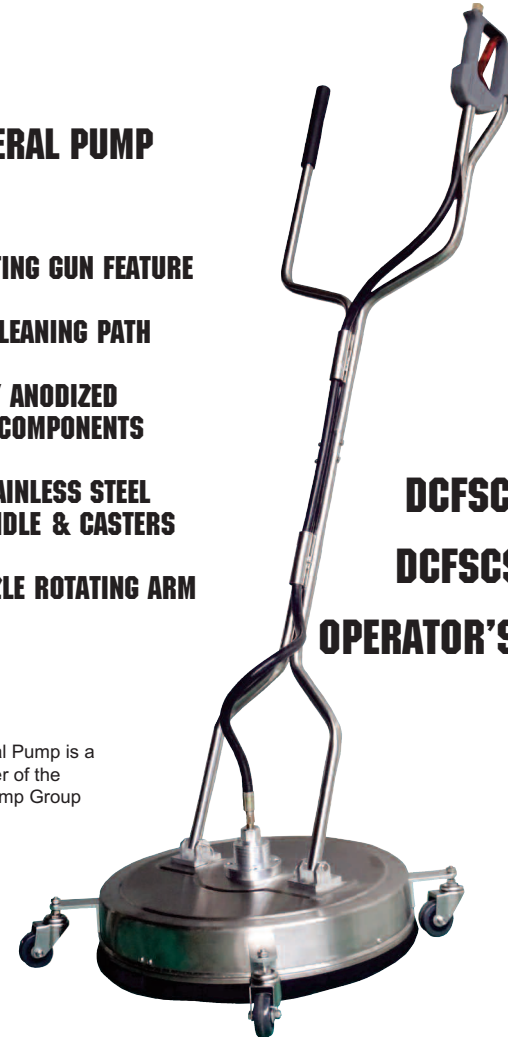
## FROM GENERAL PUMP

- COMPENSATING GUN FEATURE
- FULL 22" CLEANING PATH
- HEAVY-DUTY ANODIZED ALUMINUM COMPONENTS
- RUGGED STAINLESS STEEL COVER, HANDLE & CASTERS
- THREE NOZZLE ROTATING ARM

## DCFSCS22 DCFSCS22Z OPERATOR'S MANUAL



General Pump is a member of the Interpump Group



Ref 300918 Rev.B  
05-16



### **WARNING: Read Before Operating Machine**

**Always wear protective eyewear**  
**Keep clear of rotating nozzles**  
**Never lock trigger gun open with any device**  
**Drain water in cold weather to avoid freezing**  
*Tampering with any part of this machine will void all warranties*



## Operating Instructions

1. Connect inlet filter, D40014, to FSC gun inlet.
2. Connect to Pressure Washer.
3. Turn water on and open valve. Open trigger gun for flow of water through nozzles. Nozzles must have flowing spray. If not, remove tips and clean; reassemble, making sure that groove of nozzle is parallel to spray bar. Use thread sealant when installing nozzles.
4. Start Pressure Washer. The Hammerhead is ready for operation.
5. Walk slowly behind the Hammerhead cleaning as you go. If striping occurs, slow down your pace.
6. Periodically check weep hole on bottom of swivel. Water will seep slowly; if water shoots out, stop and replace seals. Swivel assembly can be rebuilt.
7. For maximum effectiveness keep spray tips clean. If the machine vibrates, stop and clean spray tips.
8. For the DCFSCS22Z ONLY: Grease the swivel with one or two grease gun pumps every 200 hours (or once about every 30 days of use).

**NOTE: After 50 hours of use, remove the inlet filter, take apart and clean filter screen.**

**DO NOT ALLOW MACHINE TO REMAIN STATIONARY ON SOFT SURFACES SUCH AS WOOD.**

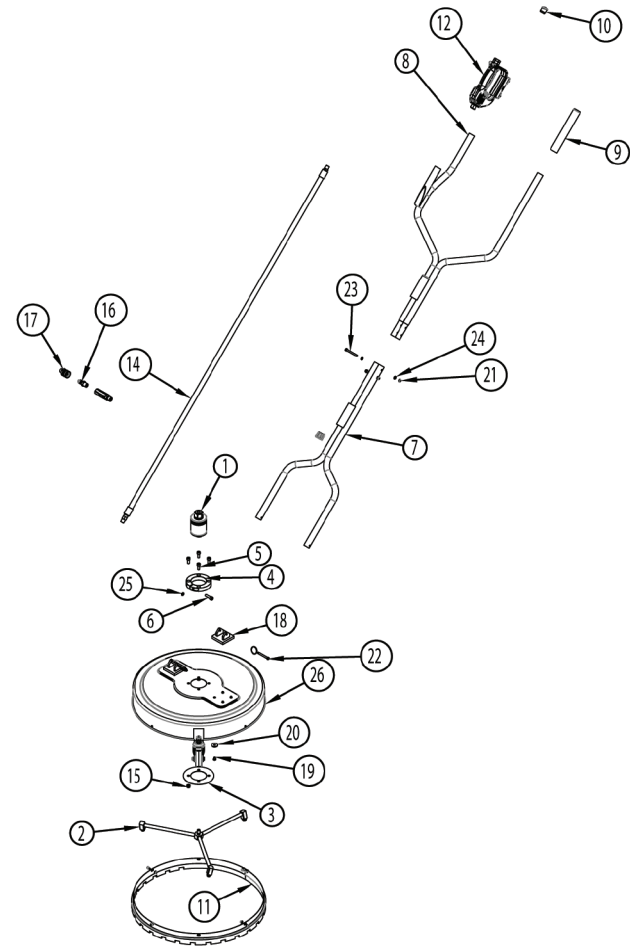
Caution: Striking any raised obstacle during operation will damage machine. If contact does occur and results in vibration when operating machine, STOP and replace spray bar. Continued operation could result in serious injury or damage to machine.

Operating Pressures: 1,000 to 4,000 PSI  
 Max Flow: 8.0 GPM  
 Dimensions: 70" x 23" x 23"  
 Weight: 24.5 lbs.

### General Pump

1174 Northland Drive • Mendota Heights, MN 55120  
 Phone: 651.686.2199 • Fax: 800.535.1745  
 www.generalpump.com • sales@gpcompanies.com

Ref 300918 Rev. B  
 05-16



| ITEM NO. | PART NO.   | DESCRIPTION        | QTY. | ITEM NO. | PART NO. | DESCRIPTION           | QTY. |
|----------|------------|--------------------|------|----------|----------|-----------------------|------|
| 1        | 2103227    | SWIVEL, DCFSCS22   | 1    | 15       | 2200053  | NUT, M8X1.25          | 4    |
|          | 2103226    | SWIVEL, DCFSCS22Z  | 1    | 16       | D10079   | PLUG, 3/8 X 3/8-M     | 1    |
| 2        | 2103224    | ARM, ROTARY, FSC   | 1    | 17       | D10075   | COUPLER, 3/8 X 3/8-M  | 1    |
| 3        | 2630010    | PLATE, RETAINING   | 1    | 18       | 2500016  | BLOCK, HANDLE         | 2    |
| 4        | 2500017    | COLLAR, SPLIT      | 1    | 19       | 2200094  | BOLT, M6              | 8    |
| 5        | 2200093    | SHCS               | 4    | 20       | 2203406  | WASHER, M6            | 8    |
| 6        | 2200055    | SHCS, M8 X 30      | 1    | 21       | 2200026  | NUT, NYLOK, M6        | 2    |
| 7        | 2550161    | HANDLE, LOWER      | 1    | 22       | 2202010  | PIN, 55MM, W/RING, SS | 2    |
| 8        | 2550160    | HANDLE, FSC, UPPER | 1    | 23       | 2200058  | HHCS, M6 X 60         | 2    |
| 9        | 2660047    | GRIP, HANDLE       | 1    | 24       | 2200018  | WASHER, M6            | 4    |
| 10       | 2660224    | PLUG, HANDLE       | 1    | 25       | 2203507  | WASHER                | 1    |
| 11       | 2103223    | ASSY, BRUSH        | 1    | 26       | 2540070  | DECK, FSC, SST        | 1    |
| 12       | DCG4000FSC | GUN, FSC           | 1    | 27       | D40015   | FILTER, IN-LINE, SST  | 1    |
| 13       | 2103228    | CASTER KIT,SS      | 1    | 28       | 2660297  | GROMMET, FSC HANDLE   | 2    |
| 14       | 2702000    | HOSE, FSC          | 1    |          |          |                       |      |

Ref 300918 Rev. B  
 05-16