

Undermount or Topmount or Vessel Sinks

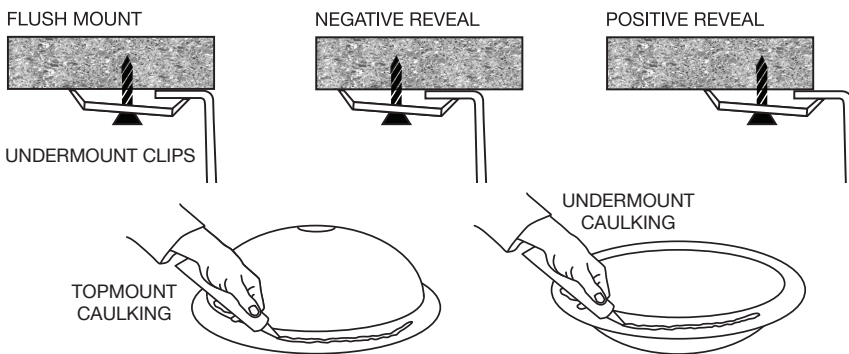


The Installation of Sinks Which Can Be Mounted Under, Over, or Atop the Countertop

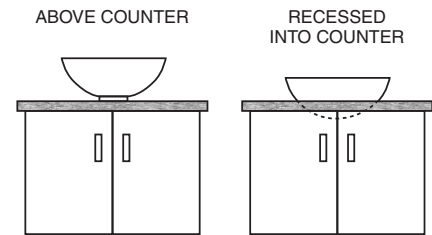
Because of their wide and tapered rims, and finished surfaces inside and out, some models constructed of copper and stainless steel have the option of being installed in three different fashions.

The installation steps below address all three mounting techniques. The diagrams show that undermounting offers three style choices, and usually includes the use of clips. Topmounting requires the use of silicone caulking. Vessels can be mounted on the countertop or recessed into it. When vessels with rounded bottoms are mounted above the counter, a sink ring is typically installed below the basin in order to stabilize it.

Undermount/Topmount Techniques



Vessel Techniques



The Steps

VESSEL ABOVE COUNTER

- Measure and cut a hole in the countertop matching the diameter of the drain pipe.
- If the bowl has a curved bottom it will require a sink ring. Position the ring on the counter over the drain hole, then rest the basin on the ring. If the bowl has a flat bottom it can be rested directly on the counter.
- Install the drain.

VESSEL RECESSED

- Measure and cut a beveled hole in the countertop to the diameter necessary to hold the sink at the desired depth, not to exceed half of the bowl's height.
- Rest the basin in the hole.
- Install the drain.

TOPMOUNT & UNDERMOUNT

- Using the template provided, measure and cut out the hole.
- Determine the locations for the clip brackets around the perimeter of the sink. Pre-drill holes for the clips.
- With denatured alcohol, clean the surfaces of the sink and countertop which will meet.
- Topmount: Apply a bead of silicone along underside of the sink rim or the top perimeter edge of the countertop opening. Undermount: Apply similarly on the top of sink rim or underside of countertop.
- Topmount: Carefully align the sink over the countertop opening and lower into position, applying pressure to secure a seal of the silicone against the countertop. Undermount: Similarly align the sink under the countertop.
- Re-check that the sink is evenly aligned and level.
- Attach and tighten the clip brackets.
- Remove excess sealant along edges with denatured alcohol.