

en-us Use and Care Manual, Installation Instructions

Dryer
WTG865H2UC



Welcome to Your New Dryer!

Congratulations on your selection of a new Bosch dryer for your laundry needs. We are confident you will enjoy the superior performance and reliability.

Please do not hesitate to contact our Customer Service department if you have any questions or comments about your new dryer.

Thank you for choosing Bosch.

Visit our website at www.bosch-home.com/us for more information and to view a selection of our products.

Table of contents

| | | | |
|--|-----------|---|-----------|
| Important information | 4 | Home Connect | 29 |
| Purchase information | 4 | Connecting to your home network automatically | 29 |
| Customer service | 5 | Connecting to your home network manually | 29 |
| Your dryer is intended for | 6 | Connecting to the Home Connect app | 30 |
| Safety Definitions | 6 | Activating/deactivating Wi-Fi | 30 |
| IMPORTANT SAFETY INSTRUCTIONS | 7 | Resetting your network settings | 31 |
| Introduction to your new dryer | 9 | Updating the software | 31 |
| Standard features and helpful information | 9 | Information on data protection | 32 |
| Special features | 9 | Declaration of Conformity | 32 |
| Environmentally friendly use of your dryer | 9 | Wi-Fi® Module FCC/IC Statements | 32 |
| Dimensions and clearances required | 10 | Laundry | 33 |
| Installation for best performance | 10 | Preparing the laundry | 33 |
| Appliance dimensions | 10 | Sorting the laundry | 33 |
| Length of power cord and drain hose | 10 | Drying tips | 33 |
| Minimum clearances | 10 | Program selection table | 34 |
| Installation Instructions | 12 | Optional program settings | 35 |
| Introduction | 12 | Low Heat | 35 |
| Before installing the dryer | 12 | Time Dry ☹ | 35 |
| Waste disposal | 12 | Remote Start | 35 |
| Parts provided with your dryer | 13 | Finish in | 35 |
| Accessories for your appliance | 14 | Dryness Level | 35 |
| Installation - step by step | 14 | Level Adjust | 35 |
| Electrical Connections | 16 | End Signal | 35 |
| Leveling the dryer | 18 | Wrinkle Block | 35 |
| Check heating system | 18 | Appliance settings | 36 |
| Preparing to transport the dryer - step by step | 18 | Child lock | 36 |
| Reversing the door - step by step | 19 | Activating setting mode | 36 |
| Getting to know your appliance | 21 | Exiting setting mode | 36 |
| Control panel | 21 | Cleaning and maintenance | 37 |
| Display area | 22 | Cleaning the housing and control panel | 37 |
| Operating Instructions | 24 | Cleaning the lint filter area | 37 |
| Your new dryer | 24 | Cleaning the lint filter | 37 |
| Before using the dryer for the first time | 25 | Cleaning the heat exchanger | 38 |
| Temporary disconnection of the dryer | 26 | Cleaning the moisture sensors | 39 |
| Using the program selector to choose a drying program | 26 | Maintenance of drain hose | 39 |
| Program selection | 26 | Troubleshooting | 40 |
| Selecting optional program settings | 26 | Introduction | 40 |
| Loading the laundry | 27 | General Troubleshooting | 40 |
| Starting the program | 27 | STATEMENT OF LIMITED PRODUCT WARRANTY .. | 43 |
| Indicator of program sequence | 28 | Bosch Clothes Dryer | 43 |
| Selecting a different program | 28 | | |
| Cancel program | 28 | | |
| Program end | 28 | | |
| Removing laundry/switching the appliance off | 28 | | |

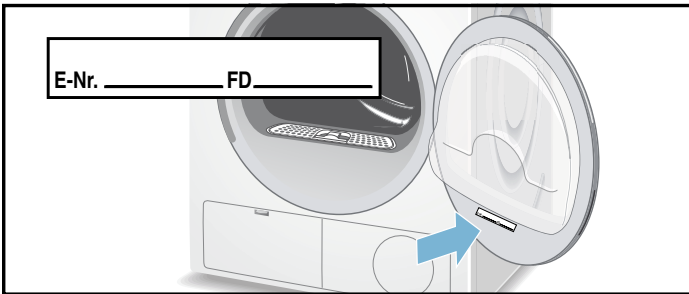
Additional information on products, accessories, replacement parts and services can be found at www.bosch-home.com/us and in the online shop www.bosch-home.com/us/store

Questions?
1-800-944-2904
www.bosch-home.com/us
1901 Main Street, Suite 600
Irvine, CA 92614
We look forward to hearing from you!

Important information

Purchase information

Please take a moment to record the following basic information about the purchase of your new Bosch dryer. This information will be helpful in the event you need to contact Customer Service or would like to order accessories or replacement parts for your dryer.



The **E-Nr.** (model number) and the **FD** (serial) number are found on the rating plate label.

The model number includes the slash and a two digit number (eg: "/01"). Please be sure to include the final 2 digit number when filling in your model number. This helps make sure any parts you may need are correctly matched to your specific machine.

Date of Purchase: __/__/____

Where Purchased: _____

E-Nr. : _____/____ (ex: WTG865H2UC/01)

FD : _____-_____ (ex: 9706|90007, provides production date)

The manufacturer reserves the right to make changes in the product or manual without notification.

Customer service

Your dryer does not require any special care other than the maintenance and care mentioned in this manual. If you have a problem with your dryer, please consult.

→ *Troubleshooting; Page 40*

This may save you money. If a technician comes out to advise you of information that is in the Troubleshooting table you may be charged.

If problems persist and service becomes necessary, contact your dealer, installer or an authorized service center. Do not attempt to repair the appliance yourself. Any work performed by unauthorized personnel may void the warranty.

If you are having a problem with your dryer and are not pleased with the service you have received, please follow these steps:

1. Contact your installer or the Authorized Service Provider in your area and explain to them why you are not satisfied. This will usually correct the problem.
2. If after working with your installer or service technician the problem still has not been resolved to your satisfaction, please let us know either by writing to us at:

BSH Home Appliances Corporation
1901 Main Street, Suite 600
Irvine, CA 92614

or calling us at:
1-800-944-2904

When writing or calling please have the following information available:

- E-Nr. (model number, example: WTG865H2UC/01)
- FD (serial number, example: 9706|90007)
- Date of Original Purchase (receipt required)
- Date Problem Occurred
- Explanation of Problem

If writing, please also include a daytime telephone number and a copy of the sales invoice.

When calling Customer Service, please be ready to provide the model number **E-Nr.** and **FD** number. This information will help provide the best support for your dryer.

Additional information is available at our website:
www.bosch-home.com/us

Your dryer is intended for

- Only household use and in a non-commercial environment.
 - Drying textiles washed in a residential style clothes washer.
 - Children must not do any laundry without supervision.
 - Keep pets away from the dryer.
 - Recommended operating conditions:
Ambient temperature: 41-95°F / 5-35°C
Relative humidity: under 95%
 - Installation by qualified installers.
 - Installation in accordance with all regulatory requirements; if in doubt have the appliance installed by a specialist familiar with these requirements.
- Read the use and installation instructions and all other information included with the dryer and act accordingly. Keep all documents for future use.

Safety Definitions

Important safety information is contained in this manual and on the warning labels located on your dryer.

Standard symbols and headings are used to identify areas where you should take precautions to avoid injury or damage. Please take a moment to become familiar with each of these symbols and what they mean before proceeding.

▲ WARNING

This indicates that death or serious injuries may occur as a result of non-observance of this warning.

▲ CAUTION

This indicates that minor or moderate injuries may occur as a result of non-observance of this warning.

NOTICE: This indicates that damage to the appliance or property may occur as a result of non-observance of this warning.

Tip: This symbol is used to draw the user's attention to important matters.

IMPORTANT SAFETY INSTRUCTIONS

READ AND SAVE THESE INSTRUCTIONS

WARNING

When properly cared for, your new appliance has been designed to be safe and reliable. Read all instructions before using the appliance. These precautions will reduce the risk of burns, electric shock, fire, and injury to persons. When using laundry appliances, basic safety precautions must be followed, including those in the following pages.

Examine the appliance after unpacking it. In the event of transport damage, do not plug it in.

WARNING

TO REDUCE THE RISK OF FIRE, ELECTRIC SHOCK, SERIOUS INJURY OR DEATH WHEN USING YOUR DRYER, FOLLOW BASIC PRECAUTIONS INCLUDING THE FOLLOWING

- Bosch dryers are provided with an Use and Care Manual with Installation Instructions. Read and understand all instructions before using the dryer.
- Do not dry articles that have been previously cleaned, washed, soaked, or spotted with gasoline, dry cleaning solvents, other flammable or explosive substances as they give off vapors that could ignite or explode.
- Before the appliance is removed from service or discarded, remove the door (to the drying compartment) to prevent children from playing or hiding inside. Also remove the power cord/plug.
- Do not allow anyone to climb, lean or hang on any part of the dryer including any protruding components such as the appliance door or a pullout shelf.
- Do not reach into the appliance if the drum is moving.
- Do not tamper with the controls.
- Do not repair or replace any part of the appliance or attempt any service unless specifically recommended in the user maintenance instructions or in Bosch published user-repair instructions that you understand and have the skills to carry out.
- Do not use fabric softeners or products to eliminate static unless recommended by the manufacturer or the fabric softener or product.
- Always unplug the dryer from the power supply before attempting any service. Disconnect the power cord by grasping the plug, not the cord.
- To reduce the risk of fire, clothes, cleaning rags, mop heads and the like which have traces of any flammable substance, such as vegetable oil, cooking oil, petroleum based oils or distillates, waxes, fats, etc., must not be placed in the dryer. These items may contain some flammable substance(s) even after washing, which may smoke or catch fire by itself.
- Do not place items exposed to cooking oils in your dryer. Items contaminated with cooking oils may contribute to a chemical reaction that could cause a load to catch fire.
- Do not use heat to dry articles containing foam rubber

(may be labeled latex foam) or similarly textured rubber-like materials or equivalent. Foam rubber materials can ignite by spontaneous combustion.

- Keep flammable materials and vapors, such as gasoline, away from the dryer.
 - Clean lint filter before or after each load.
 - Do not install or store this appliance where it will be exposed to the weather. Hoses and internal parts may be damaged if exposed to freezing temperatures.
 - Do not use the dryer if it has a worn power cord or loose plug.
 - The dryer must only be used for its intended purpose.
 - Always follow the fabric care instructions recommended by the clothing manufacturer.
 - Do not operate the dryer if parts are missing or broken.
 - Do not sit on top of the dryer.
 - To reduce the risk of fire or electrical shock, DO NOT use an extension cord or an adapter to connect the dryer to the electrical power supply.
 - Use the integrated socket only for listed appliances.
 - Always check pockets and remove any objects. Cigarette lighters are particularly hazardous.
 - Do not operate the dryer if any guards and/or panels have been removed.
 - Do not bypass any safety devices.
 - Do not operate this dryer until you are sure that:
 - All services connected to the dryer (power, drain, etc.) have been installed according to the Installation Instructions.
 - Installation and grounding are in compliance with all local regulations and/or other applicable regulations and requirements.
 - Failure to install, maintain and/or operate the dryer according to the manufacturer's instructions may result in injury and/or damage.
 - To avoid floor damage and mold growth, do not let spills or splashout cause standing water around or under the appliance.
 - Certain internal parts are intentionally not grounded and may present a risk of electric shock during servicing. Service Personnel – DO NOT CONTACT the following parts while the appliance is energized: top cover, heating element.
 - See the Installation Instructions section in this manual for grounding requirements.
→ *Electrical Connections; Page 16*
 - The IMPORTANT SAFEGUARDS and WARNINGS presented in this manual do not cover all possible conditions that may occur. Common sense, caution and care must be exercised when installing, maintaining or operating the dryer.
 - Always contact your dealer, distributor, service agent or the manufacturer about any problems or conditions that you do not understand.
 - Follow the Safety Information in the INSTALLATION INSTRUCTIONS and the OPERATING INSTRUCTIONS.
-

IMPORTANT SAFETY INSTRUCTIONS

READ AND SAVE THESE INSTRUCTIONS

WARNING

WARNINGS FOR CHILDREN

- Do not allow children to play on or in the appliance. Close supervision of children is necessary when the appliance is used near children.
 - Make sure to utilize all child lock/safety features of your appliance, and be sure to turn the appliance **Off** when not in use.
 - Appliances are not intended for use by children, however when children become old enough to operate the appliance, it is the responsibility of the parents or legal guardians to ensure they are instructed in safe practices by qualified persons.
 - Keep all laundry aids (including detergents, bleach, fabric softeners, etc.) out of the reach of children.
-

WARNING

STATE OF CALIFORNIA PROPOSITION 65 WARNINGS

This product can expose you to chemicals including vinyl chloride, which is known to the State of California to cause cancer and birth defects or other reproductive harm. For more information go to www.p65warnings.ca.gov

SAVE THESE INSTRUCTIONS!

Keep these instructions for future reference and in case of change of ownership, manual should be conveyed with the dryer.

Introduction to your new dryer

▲ WARNING

RISK OF FIRE, ELECTRIC SHOCK OR INJURY

To reduce the risk of fire, electric shock or injury to persons, read the IMPORTANT SAFETY INSTRUCTIONS of this manual before installing or operating this appliance.

→ *IMPORTANT SAFETY INSTRUCTIONS; Page 7*

Standard features and helpful information

Thank you for choosing Bosch for your laundry appliance needs.

Please read and follow the use and care, important safety instructions and troubleshooting information contained in this manual. Please retain this manual for future reference.

→ *Troubleshooting; Page 40*

This dryer complies with UL 2158 Electric Clothes Dryers.

Standard features

- Sensor controlled auto cycles.
- 17.6 lb (8 kg) large drum capacity (for regular cotton loads).
- Large door opening, 180° opening angle.

Quality tested

Each dryer which leaves our factory has undergone a thorough performance test and is in full working condition.

Website

Visit our website at www.bosch-home.com/us for more information and to view a selection of our products.

About this manual

These operating and installation instructions apply to more than one model of dryer. Illustrations used may show details that differ from your particular model.

Read your user manual. It contains valuable information about safety, installation and operation of your new appliance.

This can save you time, make it easier to correctly install and use your dryer, and improve your overall satisfaction with your new appliance.

Special features

- A distinctive feature of your dryer is low energy consumption.
- Bosch dryers feature advanced operation philosophy, customized drying programs and a solid touch and feel making them a user-friendly household assistant.
- Bosch load sensing feature controls power consumption for each cycle based on the amount and type of laundry. This automatic feature optimizes energy efficiency.

Environmentally friendly use of your dryer

Your new Bosch dryer is designed to use energy in a highly efficient way to help reduce operating costs, conserve resources and protect the environment.

To save energy, money and time, Bosch recommends the following:

- **Spin the laundry thoroughly**
Before drying, spin the laundry thoroughly in the washing machine. Use the highest possible spin speed for the type of laundry. Higher spin speeds reduce the drying time and the energy consumption.
- **Use optimum load**
Utilize the maximum amount of laundry for the appropriate cycle. However, do not exceed recommended loads.
→ *Program selection table; Page 34*
- **Clean filter**
Clean the lint filter before or after each drying process.
→ *Cleaning the lint filter; Page 37*
- **Air inlet on the dryer**
Do not cover or allow any articles/items to restrict the air inlet on the front of the dryer.
- **Energy-saving mode**
The display panel lighting goes out after a few minutes and Start/Pause flashes. To activate the display, press any button.
Energy-saving mode is not activated if a program is running.
If Wi-Fi is activated the appliance will not automatically switch off (automatic switch-off function is deactivated).

Dimensions and clearances required

Installation for best performance

⚠ CAUTION

DO NOT INSTALL THE DRYER:

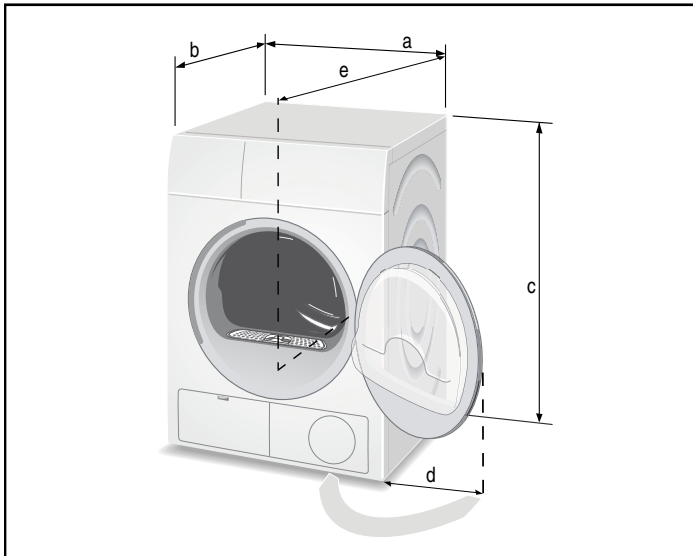
- outdoors,
- in an environment with dripping water,
- near flammable materials,
- in rooms which are at risk of freezing,
- in rooms which may contain gas or other fuels,
- on carpets.

The dryer should be installed in an open area with no restrictions to ambient air for the best drying results. Space allowances to fully open the door should also be considered.

Do not operate the dryer at temperatures above 95°F (35°C) or below 41°F (5°C). Low temperatures affect the drying process and may prolong the drying times.

The installation surface (floor) must be level and structurally sound. Using the bubble level and the height-adjustable feet installed on the appliance, level the appliance side to side and front to back.

Appliance dimensions



| Label | Dimension | U.S. Inches | Metric cm |
|-------|--------------------------|-------------|-----------|
| a | Width | 23.6 | 60 |
| b | Depth (to front of door) | 25 | 63.5 |
| c | Height (minimum) | 33.2 | 84.3 |
| | Height (maximum) | 34 | 86.4 |

| Label | Dimension | U.S. Inches | Metric cm |
|-------|------------------------------------|-------------|-----------|
| d | Side clearance (door open 180°) | 16 | 40.6 |
| e | Depth (door open 90°) | 42.9 | 109 |

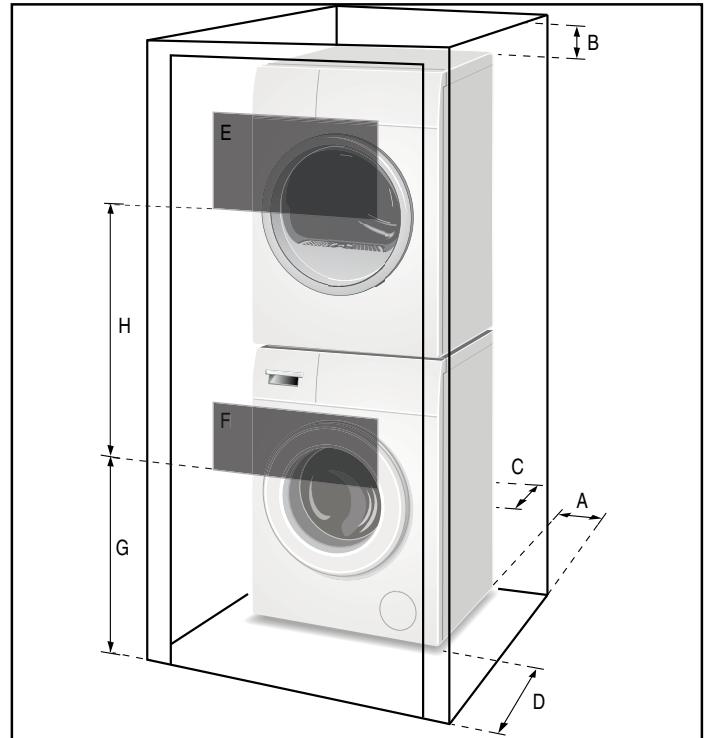
Length of power cord and drain hose

| | To Left* | | To Right* | |
|------------|-------------|-----------|-------------|-----------|
| | U.S. Inches | Metric cm | U.S. Inches | Metric cm |
| Power Cord | 42 | 106.7 | 60 | 152.4 |
| Drain Hose | 76 | 193 | 55 | 139.7 |

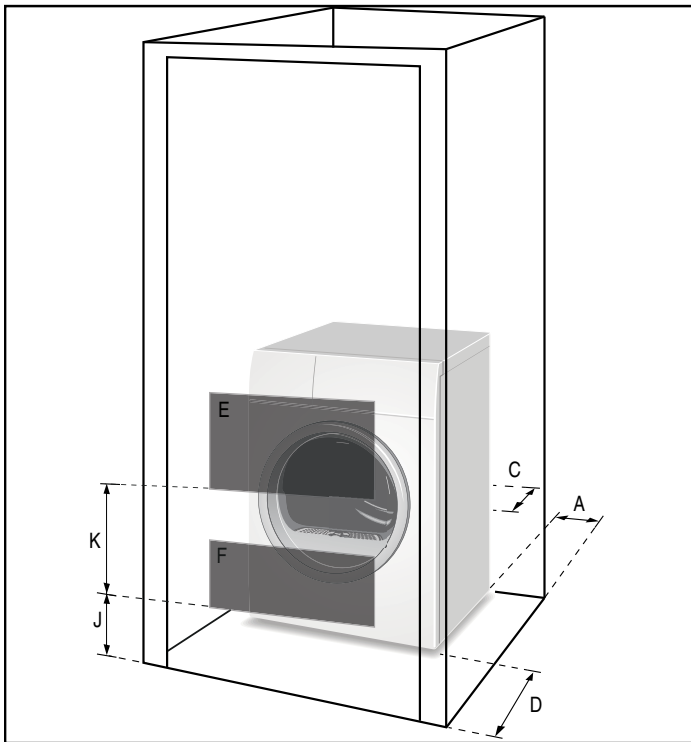
* Facing the front of the dryer

Minimum clearances

Closet: Stacked

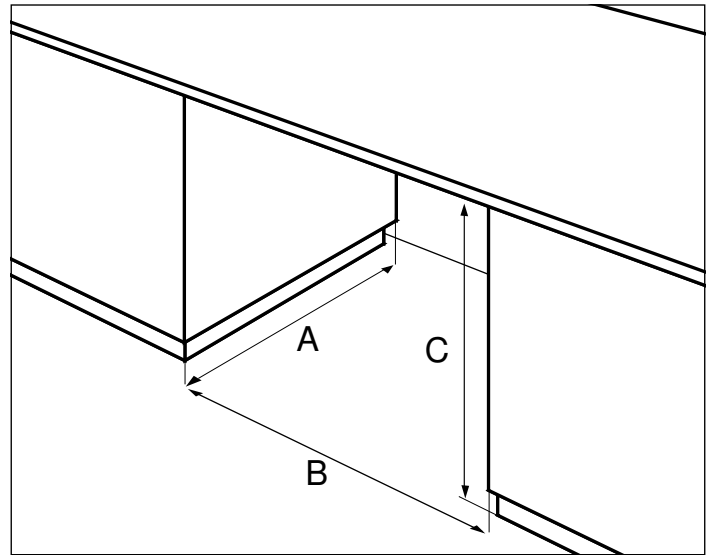


Closet: Stand alone (shown) or Side by Side



| Label | Dimension | U.S. Inches | Metric cm |
|--|-------------|-------------|-----------|
| A | Both Sides | 0.6 | 1.5 |
| B | Top | 6.3 | 16 |
| C | Rear | 2.5 | 6.2 |
| D | Front | 2.4 | 6 |
| E & F are minimum area size! | | | |
| E | Top Vent | 63 sq. | 404 sq. |
| F | Bottom Vent | 63 sq. | 404 sq. |
| Vent spacing is actual (not minimum dimensions) | | | |
| G | | 37 | 94 |
| H | | 26 | 66 |
| J | | 3 | 7.6 |
| K | | 29 | 73.6 |

Under counter (Preferred)

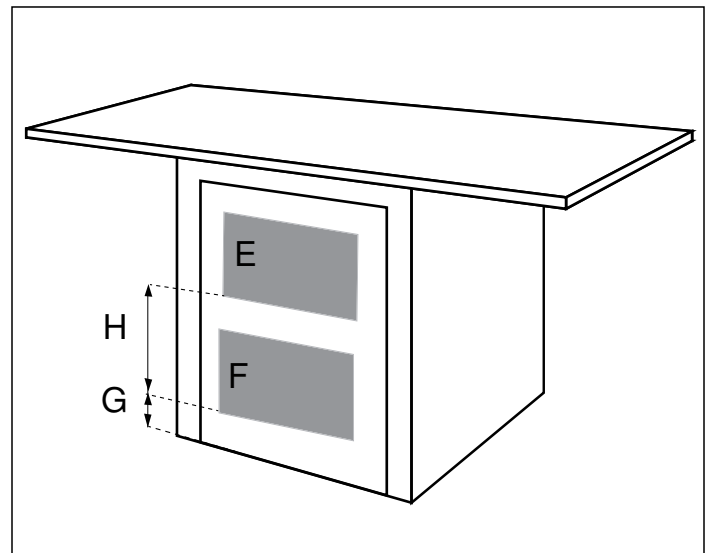


Front of the appliance fully open.
No doors or coverings.

Minimum opening dimensions

| | | |
|---|----------|---------|
| A | 28 in. | 71.1 cm |
| B | 23.8 in. | 60.5 cm |
| C | 35.5 in. | 90.2 cm |

Under counter (Less Desirable)



If front of the appliance is covered ventilation openings must be installed.

E & F are minimum area sizes

| | | |
|---|-----------|------------|
| E | 63 sq.in. | 404 sq. cm |
| F | 63 sq.in. | 404 sq. cm |

G & H

actual spacing dimensions for min. open area sizes

| | | |
|---|--------|---------|
| G | 3 in. | 7.6 cm |
| H | 14 in. | 35.6 cm |

Installation Instructions

READ AND SAVE THESE INSTRUCTIONS

Introduction

Read these installation instructions completely and carefully before starting to install your new dryer. The information contained can save you time and effort and will help to ensure optimum performance of your new dryer. Be sure to observe all warnings and cautions.

WARNING

▲ WARNING

RISK OF FIRE, ELECTRIC SHOCK OR INJURY TO PERSONS

- To reduce the risk of fire, electric shock or injury to persons, read the Important Safety Instructions at the beginning of this manual before installing or operating this appliance.
- To reduce the risk of severe injury or death, follow all installation instruction.
- Clothes dryer installation must be performed by a qualified installer, according to these instructions and according to all local codes.
- In addition to the installation and safety information in this manual, the local water and electric authorities (services) may have special requirements that must be followed.
- Install the clothes dryer according to the manufacturer's instructions and local codes.

▲ CAUTION

- Dryer is heavy. Do not lift it by yourself, use additional help and care when lifting and positioning.
- If in doubt, have the appliance installed by an authorized technician.
- Take care to not damage the appliance. Do not hold on to protruding parts (e.g. door) when lifting. Do not push against the appliance door glass due to risk of damage.
- Do not install the appliance outdoors or in an area exposed to freezing conditions.
- If freezing conditions exist where appliance is located all drain water must be removed from hoses, sumps, pumps, etc.
- Hidden surfaces may have sharp edges. During service use caution when reaching inside the dryer housing.

These installation instructions are intended for use by qualified installers. In addition to these instructions, the installation must comply with:

- for the United States - National Electrical Code, ANSI/NFPA70 - and latest editions of the State and Municipal and/or local regulations.
- for Canada - Canadian Electrical Code C22.1 - and the latest editions of the Provincial, Municipal and/or local regulations.

Before installing the dryer

Unpacking the appliance

▲ CAUTION

Remove the appliance packaging carefully to prevent damage to the surfaces.

After removing the packaging, immediately remove any objects from the drum.

Check the dryer for transportation damage. Do not connect the utilities (power or drain) to a dryer which is visibly damaged. If in doubt, contact your dealer.

Waste disposal

Disposal of Packaging Materials

After unpacking your new appliance dispose of the protective packaging materials in an environmentally friendly way. Ask your dealer or inquire with your local authority regarding currently acceptable means of disposal.

▲ WARNING

WARNINGS FOR CHILDREN

Do not let children play with packaging and associated parts to avoid risk of choking or suffocation.

Disposal of Your Old Appliance

Your old appliance can be recycled if it is no longer to be used. Prior to disposing of your old appliance observe the following precautions to reduce safety risks.

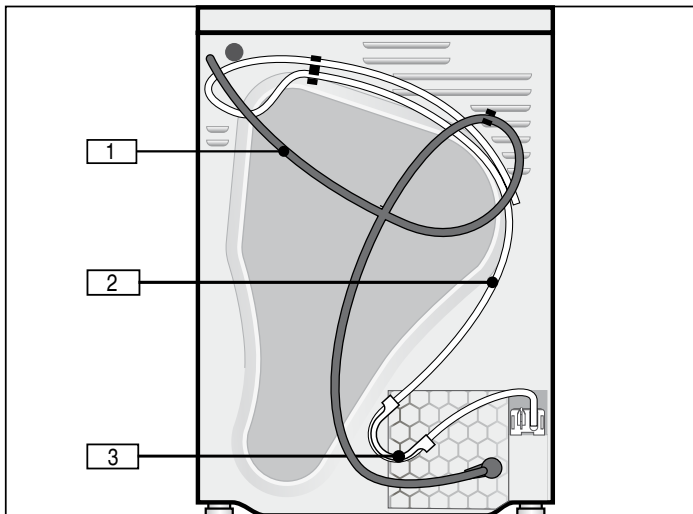
▲ WARNING

TO AVOID RISK OF INJURY OR DEATH, DO THE FOLLOWING

- after unplugging the old appliance, remove the electric power cord and dispose of properly.
- remove the door or permanently disable the door lock to prevent children from being locked inside.

Parts provided with your dryer

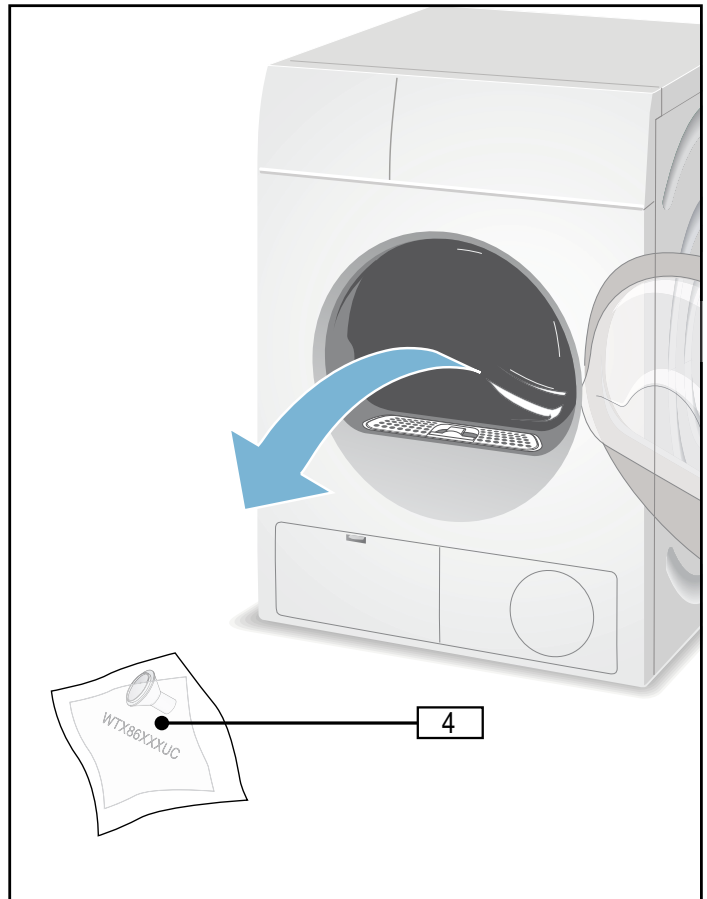
Back side of the dryer



- 1 power cord with plug
- 2 drain hose connected to the dryer
- 3 elbow to form the hose to fit the drain

Dryer drum contents

A literature pack is shipped in the dryer drum. Be sure to remove this item before using the dryer.



- 4 literature pack contents:
 - User manual
 - (2) plastic ties for securing drain hose
 - Plastic connector
 - Summary of drain hose installation instructions

NOTICE: If any parts are missing please notify your dealer immediately.

Accessories for your appliance

Pedestal

The dryer can be mounted on a special pedestal for easier loading and unloading.

Pedestal item number: **WMZ20500**

Stacking kits

The dryer can be stacked on a Bosch washer of the same dimensions to save space.

Stacking kit without a shelf: **WTZ20410**

Stacking kit with a shelf: **WTZ11400**

Drying rack

A drying rack placed inside the dryer for drying wool items, shoes, etc. is available.

Drying rack item number: **WMZ20600**

Accessories can be purchased from customer service or your local dealer.

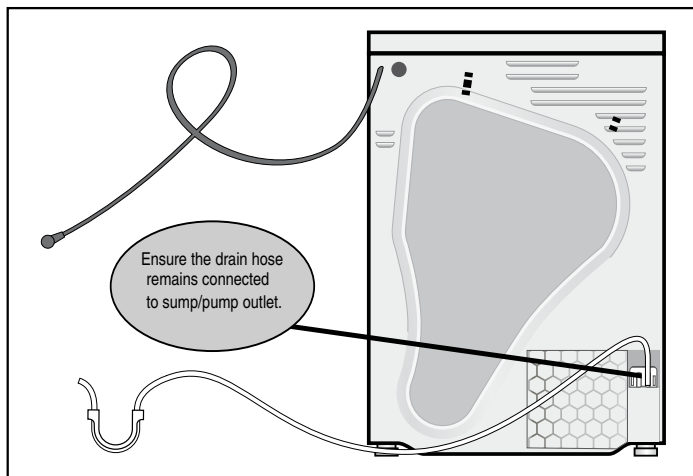
→ *Customer service; Page 5*

Installation - step by step

1. Unpack the dryer.
2. Remove all objects from the dryer drum.
3. Check the dryer for visible damage.
4. Position the dryer near the installation location.
5. Disconnect the power cord and drain hose from their clips on the back of the dryer.

⚠ CAUTION

Do not disconnect the drain hose from the sump/pump connection at the bottom of the dryer.



NOTICE: Do not reuse an old or different drain hose. Only use the drain hose included with the dryer.

6. Connect the outlet end of the drain hose to a standpipe or other drain inlet. Examples are shown below.

⚠ CAUTION

APPLIANCE DAMAGE COULD OCCUR IF DRAIN WATER FLOWS BACK INTO THE APPLIANCE

In all drain conditions, scenarios, or connections you must ensure:

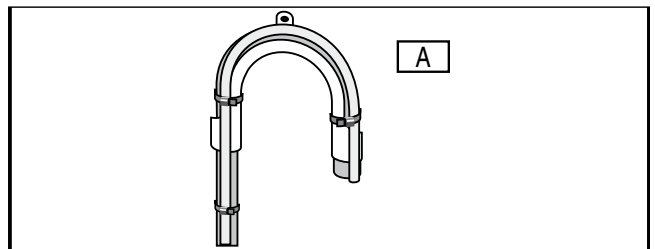
- The drain water from the hose is free flowing and not obstructed allowing adequate water flow.
- Drain opening is not sealed in any way and ventilated enough not to cause a back siphon.
- The end of the drain hose does not protrude into the pumped out or standing water.
- Be sure to follow all local codes and regulations in draining the condensate water to a suitable drain.

Examples of connections:

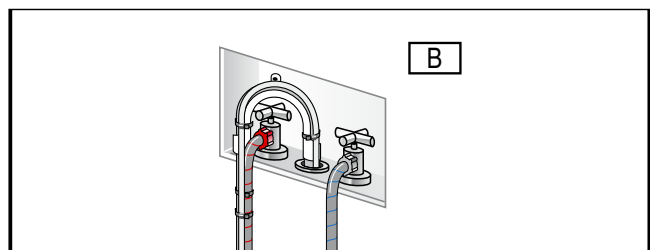
- Plumbing box or Standpipe connection:
For most plumbing box installations (with adjacent washer) the plastic elbow supplied with the dryer will not be used and must be removed from the dryer drain hose.
1. Fasten the dryer drain hose to the washer drain/elbow as shown in picture "A". Secure with plastic ties supplied.

⚠ CAUTION

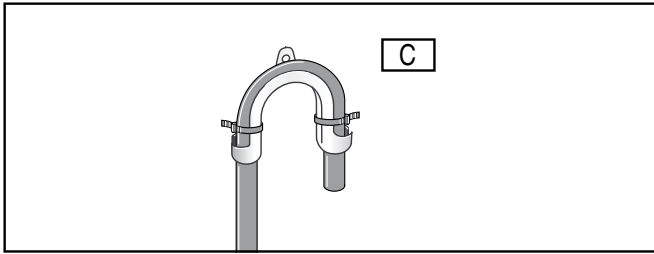
Do not over tighten plastic ties pinching or causing a restriction in the drain hose.



2. Place drain hose assembly into standpipe as shown in picture "B".

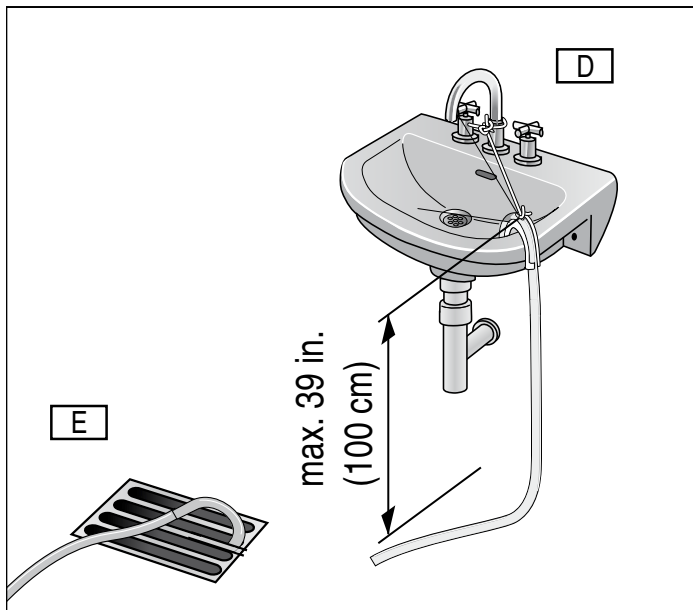


- Sink/Basin or Floor drain:
If using the elbow supplied on the hose re-position elbow closer to the drain end of hose and fasten with the plastic ties as shown in picture “C”.



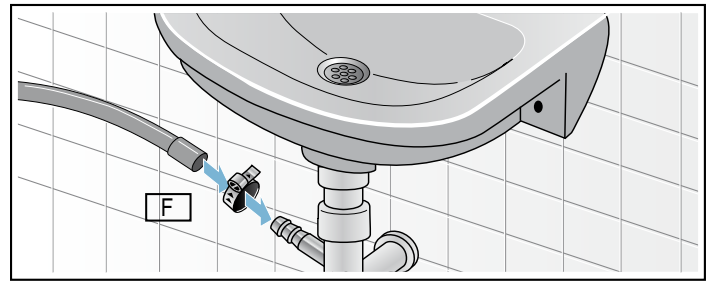
Secure hose and/or elbow as shown below. Sink “D” or floor “E”.

NOTICE: Examples shown are for reference only. Not all fittings, connectors, nuts, brackets, ties, etc. are supplied to accommodate every application.



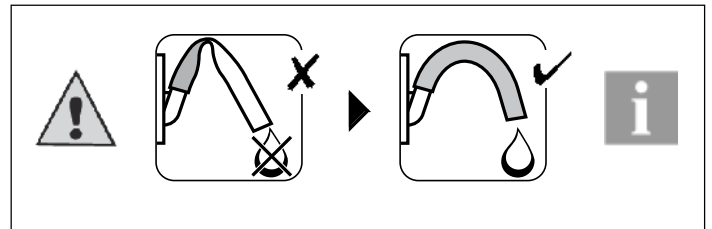
Maximum height of drain is 39 in. (100 cm).

- Sink Drain Pipe:
Attach and secure drain hose as shown below in picture “F”.
Use a standard hose clamp which can be purchased from your local hardware store.



NOTICES

- Examples shown are for reference only. Not all fittings, connectors, nuts, brackets, ties, etc. are supplied to accommodate every application.
- Ensure there are no kinks or crimps along the entire length of hose.



- If installed in an upper floor of a multi-story building, the dryer should be installed on a drained floor to prevent water damage to lower floors in the event of a leak.

Electrical Connections

Power Cord

The attached power cord is a standard 4-wire dryer cord and is UL approved and listed in the USA and Canada. It meets the following requirements:

- 208-240 volt rated (minimum);
- 30 amps;
- Type SRDT or DRT (UL 2158).

NOTICE: If your specific installation requires a 3-wire power cord follow the installation instructions for such in the next section of this manual.

ALL ELECTRICAL CONNECTIONS AND CIRCUITS

⚠ WARNING

ELECTRIC SHOCK HAZARD

- Do not pull on the power cord to unplug the dryer.
 - Protect the power cord from physical damage such as being twisted, kinked, pinched, or walked on for example.
 - DO NOT use an extension cord or an adapter to connect the dryer to the power supply.
 - Make sure:
 - The power cord fits into the outlet/receptacle.
 - The home's internal power supply circuit wire size is sufficient and electrically grounded.
 - The outlet/receptacle used to power the dryer must be connected to an individual 30 amp Branch Circuit.
 - Do not cut, remove or bypass the grounding prong on the power cord end.
 - Do not modify the plug provided with the appliance; if it will not fit the outlet, have a proper outlet installed by a qualified electrician.
 - The power cord must only be replaced by a qualified technician or licensed electrician to help avoid a fire/electric shock hazard.
- Replacement power cords can be purchased through our Customer Service department.
- Use only a UL listed 30 amp power cord.
 - Do not reuse old power cord.
 - Do not make a sharp bend or crimp wiring or conductors at connections.
 - Use only a 4-wire/conductor power cord when the appliance is installed in a mobile home, recreational vehicle, in a new branch-circuit installation or where the local codes do not permit grounding through the neutral.

⚠ WARNING

ELECTRIC SHOCK HAZARD

To reduce the risk of electrical shock:

- Only pull out the power cord by the plug end and never by the cord, as this could damage it.
- Never touch or hold the plug end or power cord with wet hands.
- Never unplug the plug end during operation.

⚠ WARNING

ELECTRIC SHOCK HAZARD

Improper connection of the equipment-grounding conductor may result in electric shock. Have the appliance checked by a qualified technician or licensed electrician if you are in doubt as to whether the dryer has been properly grounded.

GROUNDING INSTRUCTIONS

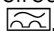
⚠ WARNING

ELECTRIC SHOCK HAZARD

This appliance must be electrically grounded. In the event of malfunction or breakdown, grounding will reduce the risk of electric shock by providing a path of least resistance for electric current.

This appliance is equipped with a cord that has an equipment grounding conductor and a grounding plug.

The plug must be plugged into an appropriate outlet that is properly installed and grounded in accordance with all local codes and ordinances.

If a ground fault circuit breaker is used, ensure it has this symbol: .

Only this symbol can assure compliance with all current regulations.

SAVE THESE INSTRUCTIONS!

Connecting a 3-wire power supply cord

⚠ WARNING

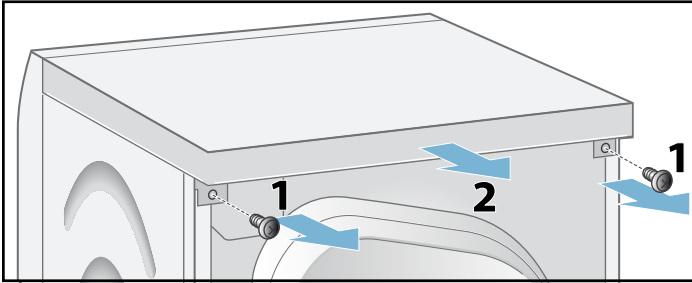
ELECTRIC SHOCK HAZARD

To reduce risk of fire, electric shock, serious injury, or death follow the installation instructions below carefully or have work done by an qualified electrician.

The power cord must meet the following requirements:

- 208-240 volt rated (minimum);
- 30 amps;
- Type SRDT or DRT (UL 2158).

1. Unplug the current power cord being used from the outlet/receptacle.
2. To disconnect and/or reconnect a new power cord you must remove the top cover of the appliance as shown below.
 - A. Remove the two T20 torx head screws.
 - B. Push the top cover toward the rear of the appliance and lift up.

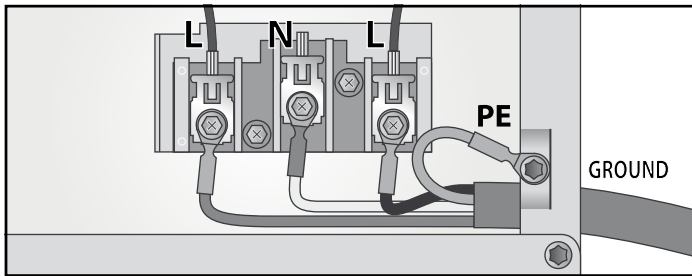


3. Open the connection box toward the rear of the appliance by removing the T20 torx head screw fastening the cover.



4. Remove the 4-wire power cord (as supplied):
 - A. Remove the 3 Philips screws (2 labeled **L** and one labeled **N**).
 - B. Remove the green grounding screw **PE** (T20 torx).

NOTICE: Be careful not to drop the screws into the dryer.

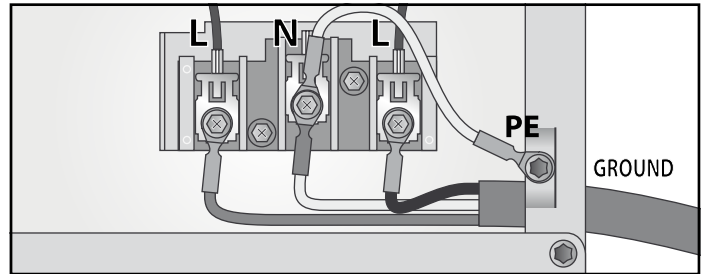


5. Loosen the strain relief clamp screw (Philips head) on rear of the connection box.
6. Pull the old power cord out of the connection box.
7. Install the new power cord back through the strain relief clamp.

NOTICE: Ensure the strain relief clamp has not been moved and its clamping screw(s) are outside the rear of the connection box.

8. Ensure the terminal ends are long enough and are formed (bent) so that no part of them (wires or terminal ends) come in contact with connection box enclosure.

NOTICE: Use only open-end spade lugs.
9. Ensure the terminal ends are long enough and are formed (bent) so they will align with the terminal block fastening locations (screw holes).
10. Reinstall the 2 terminal block screws (Philips head) at locations **L** as shown below.
11. If the ground wire shown below from **N** to **PE** is not part of the 3-wire cord assembly you have it must be obtained/purchased separately and **it must be installed**.
12. Install the last terminal block screw (Philips) and 1 grounding screw (T20 torx) at locations **N** and **PE**.



13. Tighten the strain relief screw ensuring the power cord cannot be pulled out of the connection box but not so tight as cut the power cord insulation.
14. Reinstall the connection box cover making sure all wires are routed so they do not touch any part of the enclosure and are secure.
15. Reinstall the appliance top cover as previously described in "2" above.

Integrated electrical receptacle

This appliance is equipped with a 208/240V 15A receptacle for use ONLY with Bosch washer.

⚠ CAUTION

Do not use this receptacle to power any other device.

If any other electrical device is plugged into this receptacle Bosch assumes no liability.

⚠ CAUTION

Use integrated electrical receptacle only for 208/240V Bosch washers.

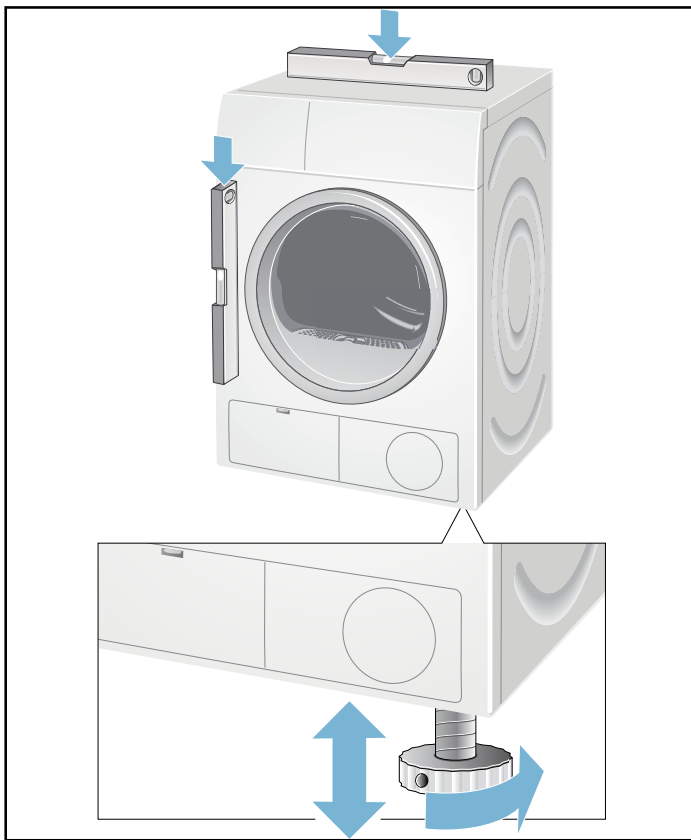
Leveling the dryer

Importance of leveling the dryer

It is important that your dryer is level and that all four dryer feet press with equal pressure against the floor. This will help assure the quietest, most vibration-free use of your dryer.

To adjust the dryer feet:

1. Install the dryer on a level and solid surface, preferably in a corner of a room.
2. If the floor is uneven (or not level) adjust the dryer feet as required to level the dryer. Do not place anything under the dryer feet to help level the dryer.
3. Extend the dryer feet no more than is necessary. The more the feet are extended, the more vibration the dryer will experience. Start with the dryer feet turned all the way in and adjust each foot as necessary.
4. Use a bubble level to check the top of the dryer to make sure it is level side to side and front to rear.
5. Press down on each corner of the dryer top to make sure the dryer does not "wobble". There should be no "give" or movement. All four dryer feet should press equally against the floor. This is just as important as the dryer being level to prevent vibration.



Check heating system

1. Check that the drum is empty.
2. Close the dryer door.
3. Switch the dryer to the **Cotton** program and select **Extra Dry** dryness level.
4. Press the **Start/Pause** button.
5. After 2-3 minutes press the **Start/Pause** button and open the door.
 - If the interior of the dryer feels warm, the dryer has been connected properly. Press the center of the Program Selector to switch off the appliance.
 - If the dryer does not work, press the center of the Program Selector to switch off the appliance. Look in the Troubleshooting section of this user manual for hints in solving the problem.

Preparing to transport the dryer - step by step

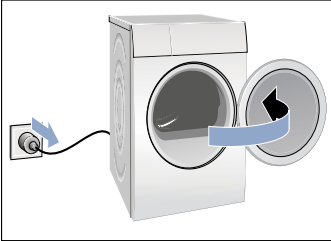
1. Press the center of the Program Selector to switch off the appliance.
2. Pull out power supply plug.
3. Place any accessories in the drum.
4. Close the door and secure with adhesive tape.
5. Screw the height-adjustable feet of the dryer into the housing to prevent them from being damaged during transportation.

Reversing the door - step by step

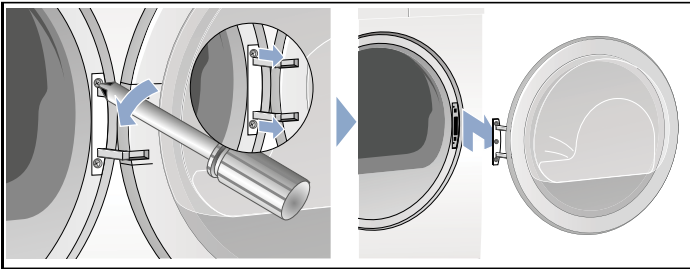
Tip: To reverse your dryer door side:

- Use only T20 (Torx) type screw driver to remove and reinstall door screws.
- Do not use any other tools to reverse the door (hinge or latch).

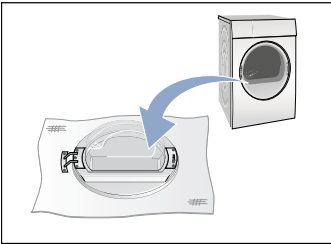
1. Press the center of the Program Selector to switch off the appliance, pull out power supply plug and open the door fully.



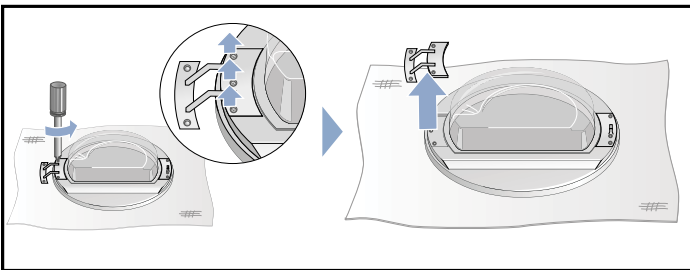
2. Remove the screws from the door and pull out the door from the dryer.



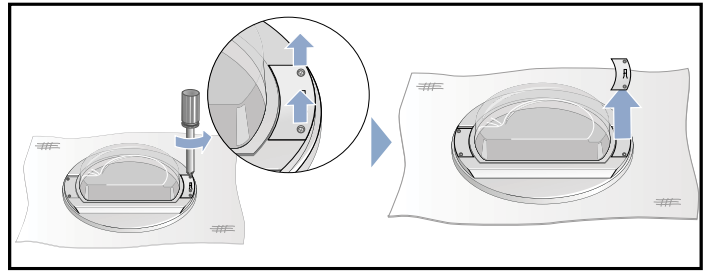
3. Put the door on a flat, smooth, but secured surface, e.g. on a towel or dishcloth lying down on the floor or table.



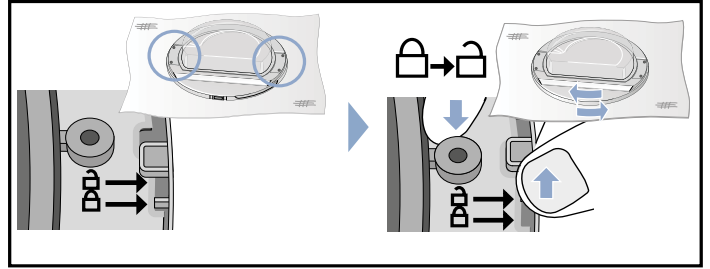
4. Remove screws from the hinge insert and then remove it from the door.



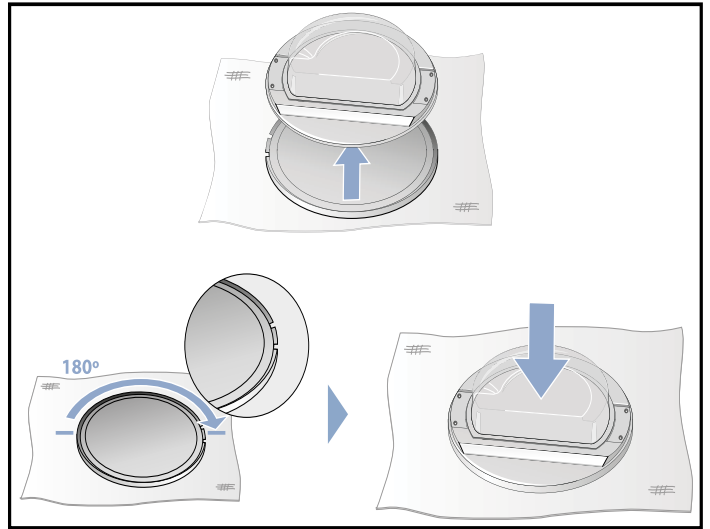
5. Remove screws from the hook insert and then remove it from the door.



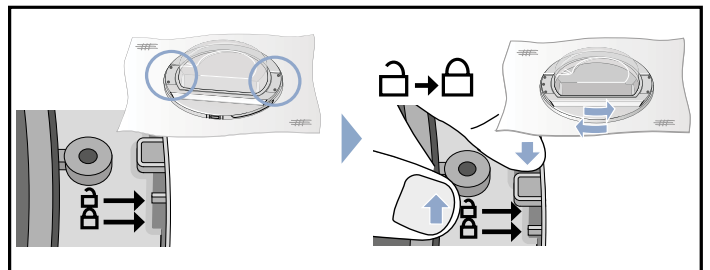
6. Follow the instructions at images below to unlock the door ring.



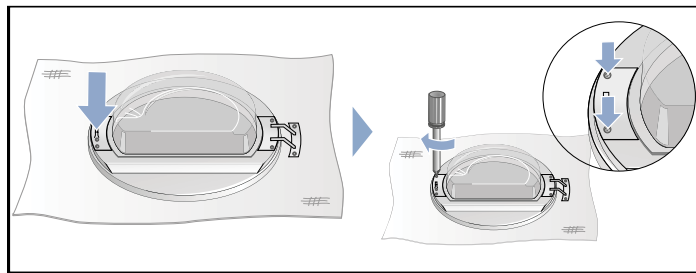
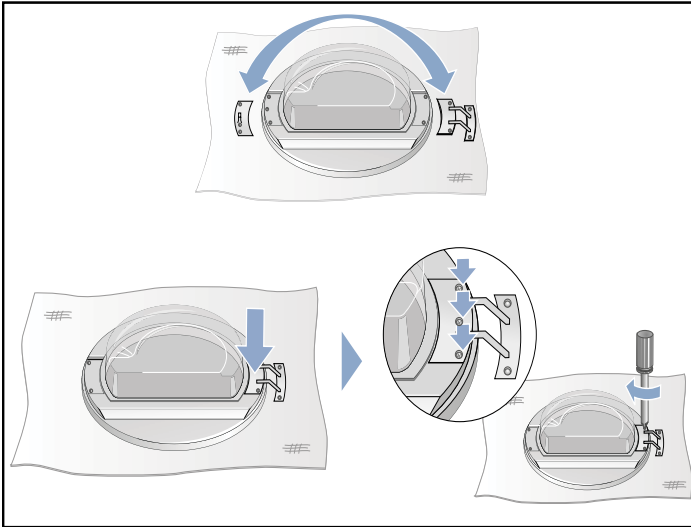
7. Separate the door and ring then reverse the ring and fit the door and ring back together.



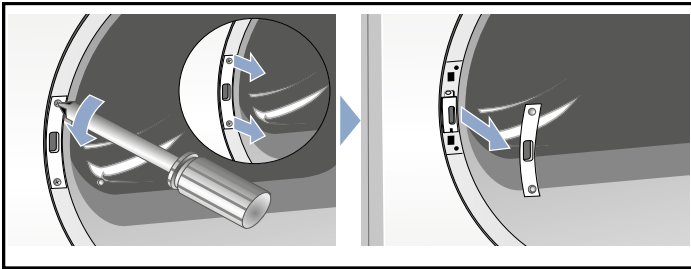
8. Follow the instructions at images below to lock the door ring.



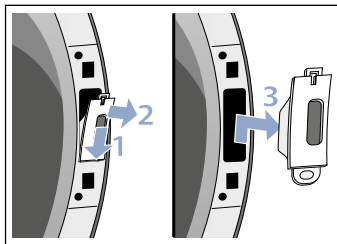
9. Prepare the hinge insert and the hook insert to install and then screw them following the instructions below.



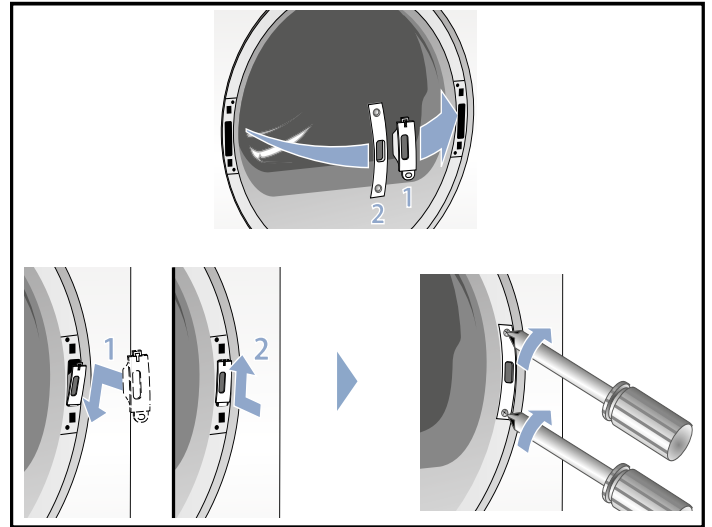
10. Remove screws from the door lock cover and then remove it from the dryer.



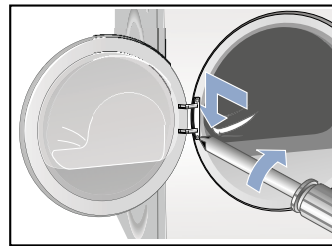
11. Remove the door lock from the dryer.



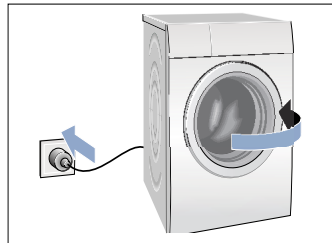
12. Install the door lock (1) and then door lock cover (2) at the opposite side of the door seal.



13. Screw the door to the dryer.

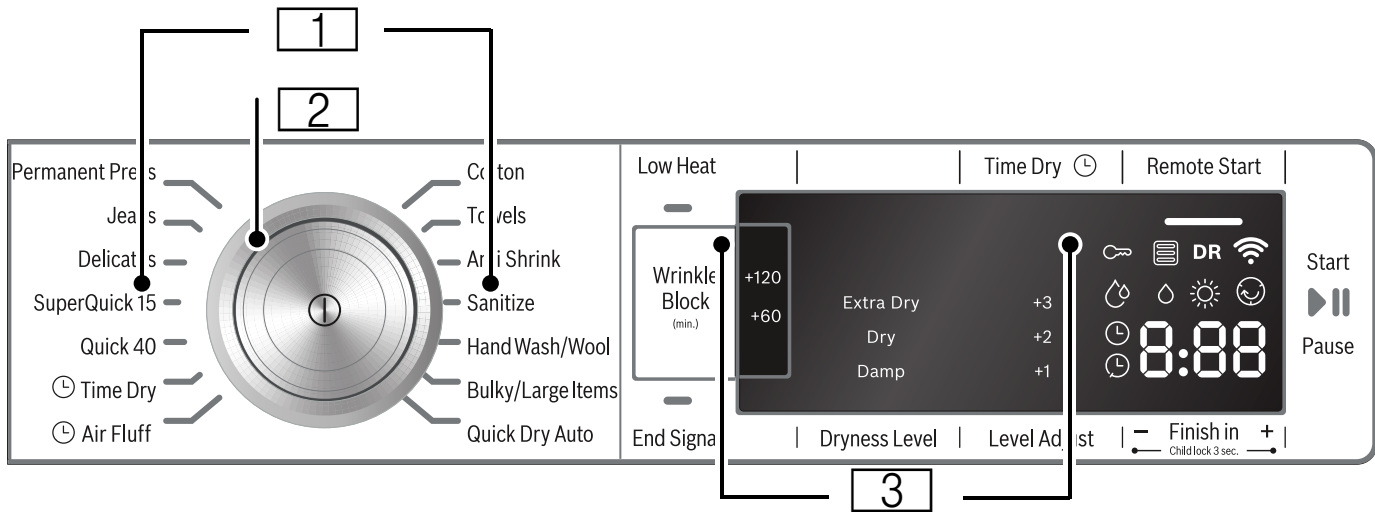


14. You can now plug in the power supply plug and close the door to start operating the dryer.



Getting to know your appliance

Control panel



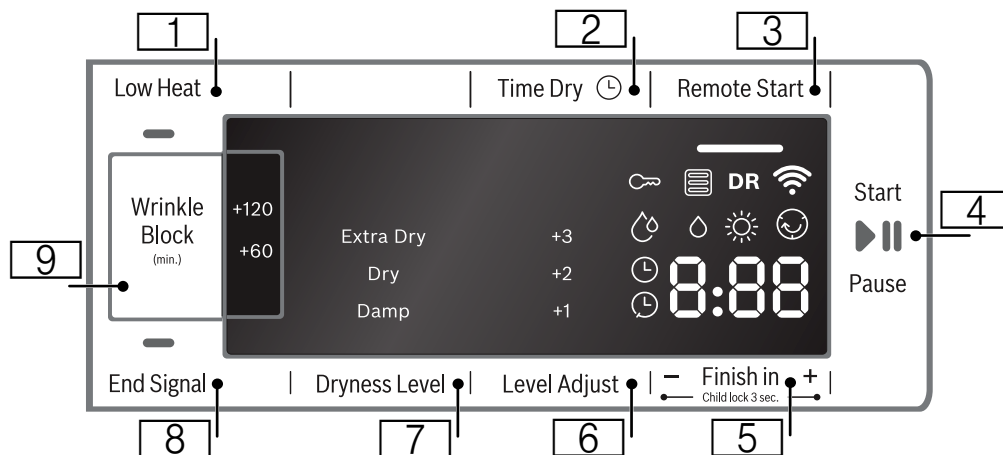
1 Programs

2 Program Selector

Center is pressed to power the appliance ON or OFF and dial turns in both directions to select a program.

3 Display Panel with Buttons

Display area





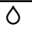




Buttons

| Button | Description | Indicator |
|--------|---|---------------------------------------|
| 1 | Select Low Heat . | — |
| 2 | Select Time Dry ⌚. | e.g. ⌚ 0:40 |
| 3 | Select Remote Start . Remote start and Home Connect settings | — |
| 4 | Select Start/Pause . <ul style="list-style-type: none"> starts or pauses the selected cycle; indicator lamp on (steady) - cycle running, can be paused (if Child lock is not activated); indicator lamp blinking - option settings can be changed; Ready state (door closed, cycle can be started), cycle is paused (press to restart). | ▶⏸ |
| 5 | Select Finish in . End of program ("Finish in" time) after...h (hours) Press Finish in — and + at once for approximately 3 seconds to activate or deactivate Child lock . | e.g. ⌚ 1h ∞ |
| 6 | Select Level Adjust . | OFF (no LED symbol shown), +1, +2, +3 |
| 7 | Select Dryness Level . | Extra Dry Dry Damp |
| 8 | Select End Signal . | — |
| 9 | Select Wrinkle Block . | OFF (no additional time), +60, +120 |

For a detailed description, see → *Optional program settings; Page 35*

Other indicators

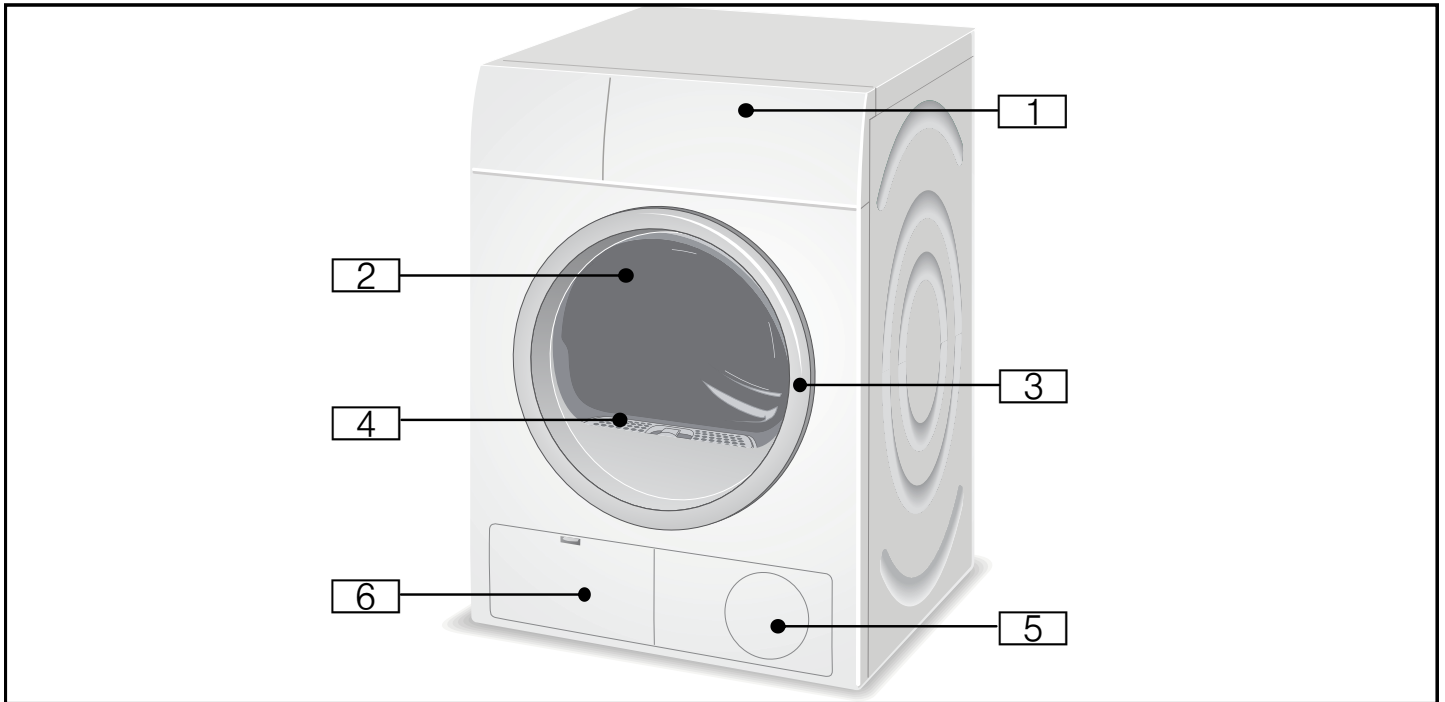
| Indicator | Description |
|---|---|
|  | <p>Lit: Child lock activated</p> <p>Flashing: A change to the programs or options is not allowed because Child lock is activated. Flashing will stop after a few seconds.</p> |
|  | Clean lint filter or heat exchanger |
| DR | Check drain indicator |
|  | <p>OFF: Wi-Fi is off.</p> <p>Flashing: The appliance is trying to connect to your home network or broadcasting “Home Connect” hot-spot.</p> <p>Lit: Wi-Fi is on and the appliance is connected to your home network.</p> |
| Drying cycle status sequence: | |
|  | Drying process started. Textiles are very damp. |
|  | Drying process progressing. Textiles are damp. |
|  | Drying process completing. Textiles nearly dry. |
|  | Wrinkle Block phase activated |
| e.g. 1:40 | Expected program duration in hours and minutes |
| - P - | <p>Pause</p> <p>Shown when Start/Pause button is pressed on control panel, Pause is activated from App, or door is opened during the drying cycle. If you remove heated items from the dryer it is recommended to spread them out allowing the heat to dissipate.</p> <p>NOTICE: If the door remains closed the drum may begin rotating 30 seconds after pausing to cool down the load and Hot will be displayed. This process can take up to 10 minutes and the program should not be changed during this time.</p> <p>Press the Start/Pause button on control panel or Continue in the App at any time to start the drying process again.</p> |
| - 0 - | Program end |
| Hot | <p>Cool Down</p> <p>Indicates dryer is operating to reduce the temperature of the load. This process can take up to 10 minutes. May appear if:</p> <ul style="list-style-type: none"> • program is paused via the control panel or remote app, or • program is stopped or dryer is switched off via the remote app. |

Operating Instructions

▲ WARNING

RISK OF FIRE, ELECTRIC SHOCK, OR INJURY
To reduce the risk of fire, electric shock, or injury to persons, read the IMPORTANT SAFETY INSTRUCTIONS and Operating Instructions before operating this appliance.

Your new dryer



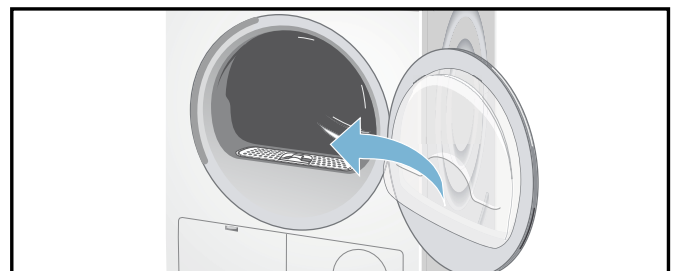
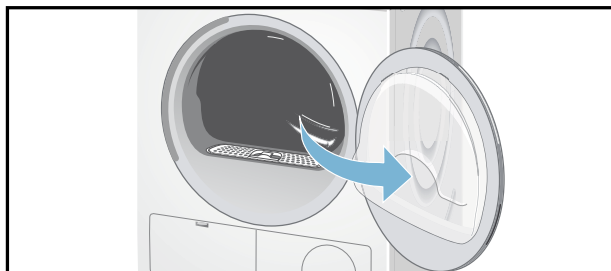
1 Control panel, display area, program selector

2 Drum with interior light (depending on model)

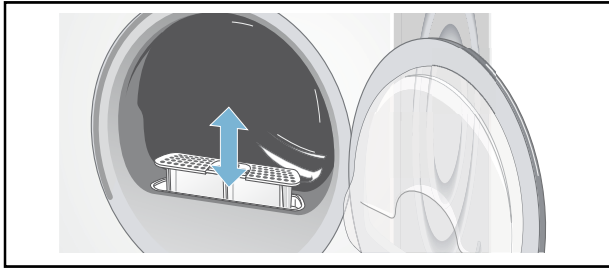
The interior light activates after the door is opened and after the program starts, it switches off automatically.

3 Open the door

Close the door

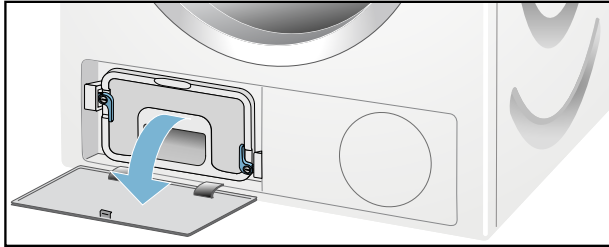


4 Lint filter

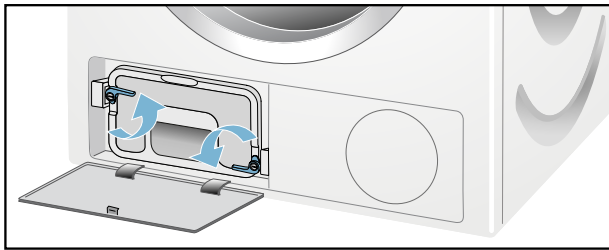


5 Air inlet

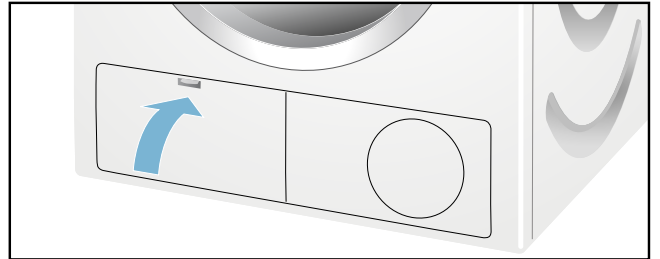
6 Open the maintenance flap



Heat exchanger



Close the maintenance flap



▲ WARNING

BEFORE INSTALLING OR USING YOUR DRYER
Read and follow all installation and operating instructions.

Check the machine. Never connect the utilities (power or water) to or start a damaged machine! Contact customer service!

→ *Customer service; Page 5*

Check to be sure the dryer drain hose is installed properly.

Turning the dryer on and off

Pressing the center of the Program Selector turns the appliance on and off. After switching on, turn the outer dial to choose a program. Switch off after the program has finished.

Before using the dryer for the first time

1. Read these operating instructions carefully.
2. Check that the supply voltage corresponds with the voltage specifications on the rating plate on the dryer, see top rear side of the dryer and/or rating plate label inside of the dryer door.
→ *Electrical Connections; Page 16*
3. Remove all objects from the drum.
4. Check the dryer for visible damage. If damage found contact your dealer.
5. Wipe the inside of the drum with a damp cloth.
6. Check heating system.
→ *Check heating system; Page 18*
7. If the dryer does not work, press the center of the Program Selector to switch off the dryer. Look in the Troubleshooting section of the operating instructions for support.
→ *Troubleshooting; Page 40*

Temporary disconnection of the dryer

Operate your dryer only when you are at home. If you intend going on vacation or are not using your dryer for an extended period of time, you should:

1. Turn off the circuit breaker.
2. Pull out the power supply plug if possible.
3. Clean the lint filter.

Using the program selector to choose a drying program

NOTICE: If the Child lock is activated, you must deactivate it before you can select a program.

→ *Child lock; Page 36*

Use the program selector to select the desired drying program. The dial turns in both directions and when a cycle is selected its time duration appears in the display.

Program selection

For optimum drying results your dryer offers several different types of programs to choose from.

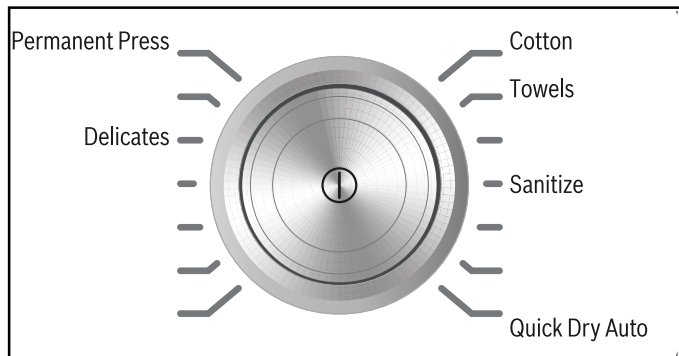
Select the required drying program from the program table according to the examples.

→ *Program selection table; Page 34*

Automatic programs

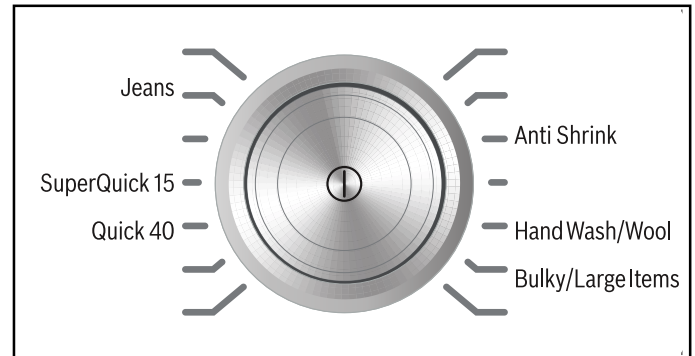
There are automatic programs for different types of textiles (e.g. Cotton, Permanent Press).

The program sequence of automatic programs is controlled by sensors. The duration of the program depends on the measured degree of moisture in the laundry and on the selected degree of dryness (e.g. Extra Dry).



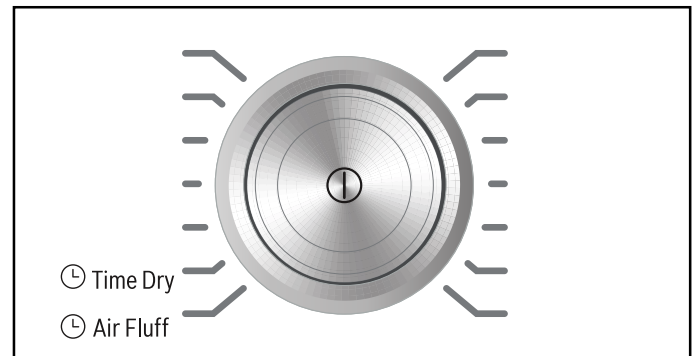
Special programs

The programs Anti Shrink, Hand Wash/Wool, Bulky/ Large Items, Quick 40, SuperQuick 15 and Jeans are made for special type fabric loads.



Time programs

Time programs run at specific temperatures and are suitable for delicate items, individual or a few small items and subsequent drying.



Selecting optional program settings

By selecting optional program settings, you can adjust the drying process to better suit the items you are drying. The optional program settings can be selected and deselected depending if the setting is allowed (not all settings are allowed for all programs) and the cycle's progress.

The indicator lamps of the buttons light up if the setting is active.

For **Time Dry** ⌚, **Finish in**, **Wrinkle Block** and **Low Heat** the settings are not retained after the appliance is switched off.

For **Dryness Level** the setting is retained for each program separately after the appliance is switched off (for fabric care this setting is not retained for the Cotton program).

For **Level Adjust** the setting is retained for each program separately after the appliance is switched off.

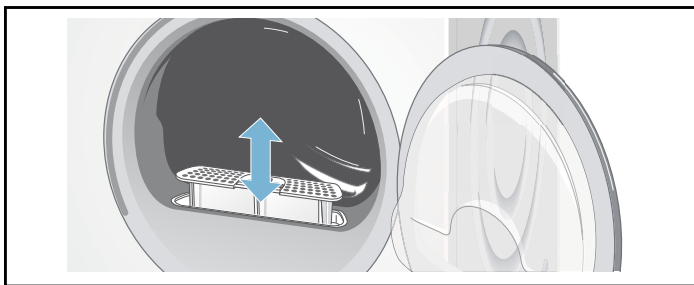
Loading the laundry

▲ WARNING

RISK OF EXPLOSION

Do not dry laundry that has ever been in contact with solvents, oil, wax, grease or paint (e.g. hair styling products, nail varnish remover, stain remover, cleaning solvent, etc.).

1. Check lint filter.



The filter should be cleaned after or before every drying process. Cleaning the filter reduces the drying time and saves energy.

→ *Cleaning the lint filter; Page 37*

2. Load the laundry into the drum and close the door.

Tip: If the door has not been closed properly, the dryer will not start.



Tips

After loading, close the door carefully so as not to trap any items between the door and the rubber seal. The door should be closed until a click is heard.

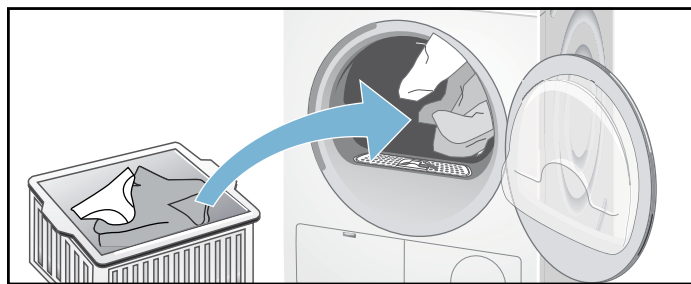
Foreign objects left in the drum may damage laundry. Before inserting any laundry, check to make sure no foreign objects are in the drum.

Recommended Load Size

Recommended maximum load size can be found in the program selection table in this manual.

→ *Program selection table; Page 34*

Load the laundry



Place laundry in the empty drum. Put each piece of laundry into machine separately.

For best results the laundry to be dried must be sorted according to type of laundry and desired degree of drying.

→ *Program selection table; Page 34*

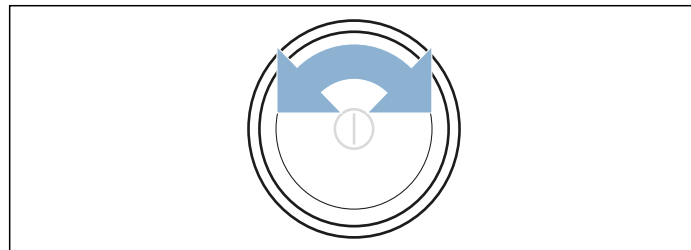
→ *Sorting the laundry; Page 33*

→ *Level Adjust; Page 35*

Starting the program

1. Switch on the appliance. Rotate program selector to the desired program. Select the program which corresponds to the laundry in the dryer from Program selection table.

→ *Program selection table; Page 34*




The **Start/Pause** indicator light starts flashing.

2. Press the **Start/Pause** button. Indicator lamp lights up and the cycle starts.

During the cycle, the display area indicates the estimated remaining time and, after starting the drying cycle, the cycle duration and the symbols for the cycle progress stay lit.

NOTICES

- If you want to protect the cycle against inadvertent adjustment select the **Child lock**. → *Child lock; Page 36*
 - If  indicator lights up, clean the lint filter and/or heat exchanger. → *Cleaning the lint filter; Page 37*, → *Cleaning the heat exchanger; Page 38*
 - If **DR** indicator lights up, check the drain hose and its connection. → *Maintenance of drain hose; Page 39*
3. If required, select **Low Heat** by pressing the button.
→ *Low Heat; Page 35*
4. If required, select **Wrinkle Block** by pressing the button. → *Wrinkle Block; Page 35*

Indicator of program sequence

Bosch dryers use an advanced control system which continually monitors the laundry's remaining moisture. The current state of the process and status of the program is shown by indicator lights and 7-digit display.



Selecting a different program

If you have inadvertently started the wrong program, you can change this as follows:

1. Press **Start/Pause**.

NOTICE: The drum will continue to rotate when the Cool Down process is in progress, even if the program is paused. The Cool Down process can be stopped at any time by opening the door.

2. Select another program and/or a different optional program setting.

NOTICE: Do not change the program during the Cool Down process.

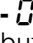
3. Press **Start/Pause**. The new drying cycle starts from the beginning.

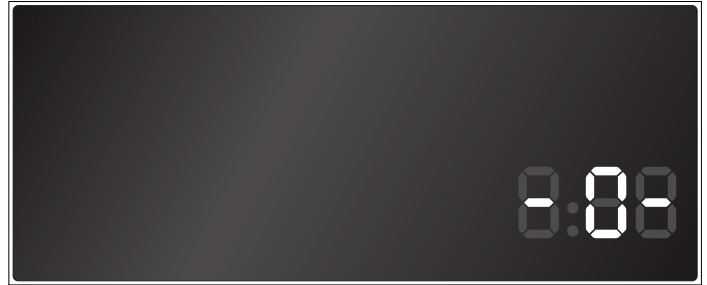
Cancel program

If required, you can cancel the selected program:

1. Press **Start/Pause**.
2. Press the center of the Program Selector to switch off the appliance.

Program end

-  - appears in the display area and the Start/Pause button indicator lamp is off.



After the program end, press the center of Program Selector to switch off the appliance.

Removing laundry/switching the appliance off

1. Open the door and remove the laundry.
2. Press the center of the Program Selector. Appliance is switched off and dryer light goes out.
3. Clean lint filter.
→ *Cleaning the lint filter; Page 37*
4. Close the door.

Tip: If the display panel switches off and the Start/Pause button indicator is blinking at the end of a program, the Energy-saving mode is active. To activate the display, press any button.

→ *Environmentally friendly use of your dryer; Page 9*

Home Connect

This appliance is Wi-Fi enabled and can be controlled remotely via a smartphone or tablet PC.

With the Home Connect app, you can use your smartphone or tablet PC to do the following on this appliance:

- Select and start programs.
- Change program settings.
- Query program status.
- Change appliance settings.
- Switch off appliance.

Before you can use the Home Connect functions, you will need to install the Home Connect app on your smartphone or tablet PC, register, connect your appliance once automatically **or** manually to your home network, and then connect your mobile device to your appliance via the Home Connect app.

You can find information about the app on our Home Connect website www.home-connect.com.

The availability of the Home Connect function depends on the availability of Home Connect services in your country. Home Connect services are not available in every country. You can find more information here www.home-connect.com.

Notes

- Observe and comply with all safety instructions in manuals and apps when operating appliances via the app while you are away from them. You must also follow the instructions in the Home Connect app.
- You cannot use the Home Connect app to change programs or options while the appliance is operating. However, you can see any changes made at the appliance via the app display.


Connecting to your home network automatically

If your router has a WPS function, you can connect the appliance to your home network automatically.

If your router does not have a WPS function, you will need to connect the appliance to your home network manually.


1. Switch the appliance on.
2. Press and hold **Remote Start** for at least 3 seconds. *Aut* (connect automatically) will appear on the display.



3. Press **Start/Pause** to connect to the network.  will flash on the display.

The appliance will now try to connect to your home network.

4. Activate the WPS function on your home network router within the next 2 minutes.

If the appliance has connected to your home network successfully, *con* (connected) will appear on the display and  will be lit continuously.

5. Press **Remote Start** briefly to exit the Home Connect settings.

Note: If a connection could not be established, check whether your appliance is in range of your home network. Try connecting automatically again or connect your appliance manually.

Connecting to your home network manually

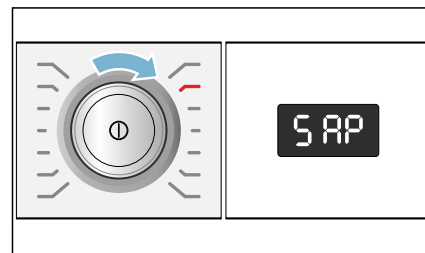
If your appliance has already been automatically connected to your home network, you can skip the manual connection step.


If your router does not have a WPS function, you will need to connect the appliance to your home network manually.

1. Switch the appliance on.
2. Press and hold **Remote Start** for at least 3 seconds. *Aut* (connect automatically) will appear on the display.



3. Turn the program selector to position 2. *SAP* (connect manually) will appear on the display.




4. Press **Start/Pause** to connect to the network.  will flash on the display.

The appliance will now set up its own WiFi network with the name (SSID) **Home Connect**. You can access it on your smartphone or tablet PC.

- Open up your Wi-Fi settings on your mobile device.
- Connect your smartphone or tablet PC to the **Home Connect** WiFi network and enter the password (key) "**HomeConnect**".

Note: The connection process may take up to 60 seconds.

- Once you have connected successfully, open the Home Connect app on your smartphone or tablet PC.
- In the Home Connect app, enter the name (SSID) and password (key) for **your home network** and then select **Transfer to appliance**.

If the appliance has connected to your home network successfully, **con** (connected) will appear on the display and  will be lit continuously.

- Press **Remote Start** briefly to exit the Home Connect settings.

Notes

- If a connection could not be established, **Err** (fault) will appear on the display. Check whether your appliance is in range of your home network. Try connecting manually again.
- If your smartphone or tablet PC is still connected to the **Home Connect** network, you will need to connect it to your home network first.

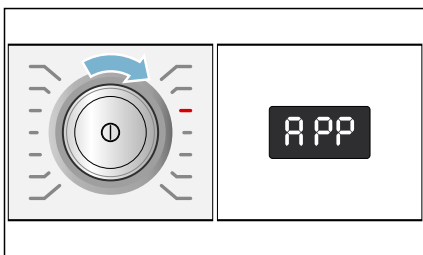
Connecting to the Home Connect app

If your appliance is connected to your home network, you can connect it to the Home Connect app.

- Switch the appliance on.
- Press and hold **Remote Start** for at least 3 seconds. **Aut** (connect automatically) will appear on the display.



- Turn the program selector to position 3. **APP** (connect to app) will appear on the display.



- Press Start/Pause .
The appliance will now connect to your Home Connect app.

- Open the Home Connect app on your smartphone or tablet PC and select **Connect** to add your new appliance.

Note: If your smartphone or tablet PC is still connected to the Home Connect network, you will need to connect it to your **home network** first.

- If your appliance is not shown automatically, select **Appliance search** and then **Connect an appliance** in the Home Connect app.
- Carry out the last steps in the Home Connect app to connect your appliance.

If the appliance has connected to your home network successfully, **con** (connected) will appear on the display.

- Press **Remote Start** briefly to exit the Home Connect settings.

Note: If a connection could not be established, **Err** (fault) will appear on the display. Check whether your smartphone or tablet PC is in range of your home network and whether it is connected to it. Try connecting to the Home Connect app again.

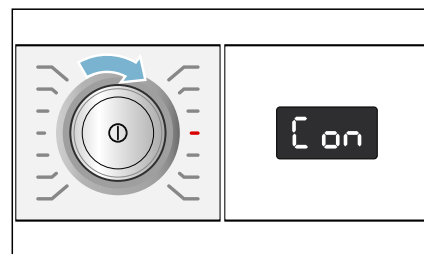
Activating/deactivating Wi-Fi

You can switch the Home Connect function on your appliance on or off permanently at any time.

- Switch the appliance on.
- Press and hold **Remote Start** for at least 3 seconds. **Aut** (connect automatically) will appear on the display.



- Turn the program selector to position 4. **Con** (WiFi function) will appear on the display.



- Press Start/Pause .
If **on** (switched on) appears on the display, the WiFi function on the appliance has been activated. If **off** (switched off) appears on the display, the WiFi function is not active.

5. Press **Remote Start** briefly to exit the Home Connect settings.

Notes

- If you connect to your home network, Wi-Fi is activated automatically.
- If Wi-Fi is activated, the appliance will not switch itself off automatically.
- If Wi-Fi is switched off on the appliance, it is not possible to use the Home Connect app to start or control the appliance remotely.
- If Wi-Fi is switched off and your appliance was previously connected to your home network, this connection will be re-established automatically when Wi-Fi is switched back on.

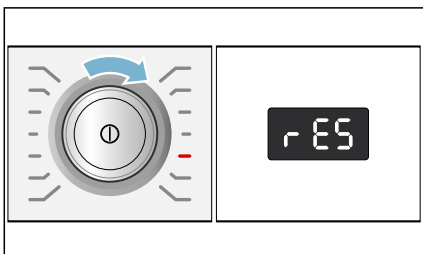
Resetting your network settings

You can clear the network settings and break the connection to your smartphone or tablet PC by resetting the network settings.

1. Switch the appliance on.
2. Press and hold **Remote Start** for at least 3 seconds. *Aut* (connect automatically) will appear on the display.



3. Turn the program selector to position 5. *rES* (reset network settings) will appear on the display.



4. Press Start/Pause . *YES* (yes) will appear on the display.
5. Press Start/Pause to confirm. *End* (end) will appear on the display. The network settings have now been reset. Your appliance is no longer connected to your home network or the Home Connect app.

6. Press **Remote Start** briefly to exit the Home Connect settings.

Notes

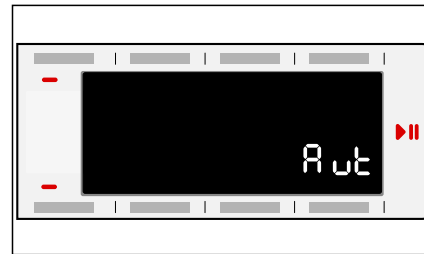
- If the network settings could not be reset, *Err* (fault) will appear on the display.
- If you want to operate the appliance via the Home Connect app again, you will need to reconnect it to your home network and to the Home Connect app either automatically or manually.

Updating the software

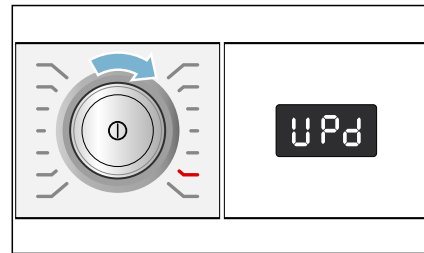
You can update the Home Connect software on your appliance. As soon as a new update is available, *UPd* (update) will appear on the display.

You can install the update directly via the message on the display or, alternatively, you can do this manually.

1. Switch the appliance on.
2. Press and hold **Remote Start** for at least 3 seconds. *Aut* (connect automatically) will appear on the display.



3. Turn the program selector to position 6. *UPd* (update) will appear on the display.



Start/Pause will flash if a software update is available.

4. Press Start/Pause . *YES* (yes) will appear on the display.
5. Press Start/Pause to confirm. Update installation will now start. This process may take several minutes. Do not switch the appliance off while updates are being installed.
6. Press **Remote Start** briefly to exit the Home Connect settings.

Information on data protection

When your appliance is connected to a WLAN network that is connected to the Internet for the first time, your appliance transmits the following categories of data to the Home Connect server (initial registration):

- Unique appliance identification (consisting of appliance codes as well as the MAC address of the installed WiFi communication module).
- Security certificate of the WiFi communication module (to ensure a secure data connection).
- The current software and hardware version of your domestic appliance.
- Status of any previous resetting to factory settings.

This initial registration prepares the Home Connect functions for use and is only required when you want to use these Home Connect functions for the first time.

Note: Home Connect functions can be used only in conjunction with the Home Connect app. Information on data protection can be accessed in the Home Connect app.

Declaration of Conformity

BSH Home Appliances Group hereby declares that the appliance which features Home Connect functionality is in accordance with the essential requirements and other relevant provisions of the following Directives.

Wi-Fi® Module FCC/IC Statements

Model: COM1

FCC ID: 2AHES-COMGEN1

IC: 21152-COMGEN1

The Home Connect module is a communication device designed to provide communication between appliances and smart devices.

This module is integrated at the factory, under direct control of B/S/H Home Appliances Corporation, and is not user serviceable or upgradable. At least 20cm separation distance should be maintained from device to user.

FCC COMPLIANCE STATEMENT

▲ CAUTION

Changes or modifications not expressly approved could void your authority to use this equipment.

This device complies with Part 15 of the FCC Rules. Operation to the following two conditions:

- This device may not cause harmful interference and
- this device must accept any interference received, including interference that may cause undesired operation.

INDUSTRY CANADA STATEMENT

This device complies with Industry Canada licence-exempt RSS standard(s). Operation is subject to the following two conditions:

- This device may not cause interference and
- this device must accept any interference, including interference that may cause undesired operation of the device.

WiFi is a registered trademark of Wi-Fi Alliance.

Laundry

Preparing the laundry

NOTICE: Damage to the appliance/fabrics.

Foreign objects (e.g. coins, paper-clips, needles, nails) may damage the laundry or components in the dryer.

Therefore, note the following tips when preparing your laundry:

- Empty all pockets to ensure no loose debris (coins, keys, other hard objects and cigarette lighters) are placed in the dryer drum.
- Close any fasteners (such as zippers, hooks and eyelets) that could cause laundry to catch or become entangled. Button up covers. Tie cloth belts, apron strings, etc. together or use a laundry bag.
- Remove any foreign objects or non-washable parts.
- The drum must be empty prior to loading textiles.

Sorting the laundry

Check the care labels on each laundry item prior to drying. They provide valuable information as well as limitations about laundry process (temperature etc.) to help you choose an appropriate cycle.

Do not dry the following textiles in the dryer:

- air-tight textiles (e.g. rubberized),
- delicate fabrics (silk, synthetic curtains).

Drying tips

- To ensure a uniform drying result, sort the laundry according to fabric type and drying program.
- Always dry very small items (such as socks and handkerchiefs) and underwired bras together with large items of laundry or in a laundry bag.
- Do not over-dry easy-care laundry - risk of wrinkling! Allow laundry to finish drying in the air.
- Do not iron laundry immediately after drying. Place the laundry in a pile for a short while. Residual moisture will then be distributed uniformly.
- Knitted fabrics (e.g. T-shirts, jerseys) often shrink when tumble-dried for the first time. Do not use program with selected **Extra Dry** dryness level.
- Only dry wool fabrics with the use of drying rack. To refresh or fluff up wool articles use the **Hand Wash/Wool** program and remove load from dryer and layout on flat surface to finish drying.
- For pre-dried, multi-layered fabrics or small, individual items of laundry, use the **Time** program.
Also suitable for subsequent drying.
→ *Program selection; Page 26*
→ *Program selection table; Page 34*
- Some detergents and textile care products, starch or softeners may contain chemicals that may become deposited on the moisture sensors negatively affecting their function and the drying results.
 - When washing laundry to be tumble-dried, use the correct amount of detergent and textile care products as specified in the manufacturer's instructions.
 - Clean the moisture sensor regularly → *Cleaning the moisture sensors; Page 39.*

Program selection table

| Programs | Max. load up to: | Type of laundry |
|--------------------------|------------------|--|
| Cotton | full load | Normal cotton and linen type load (bed linen, cotton clothes, terry bathrobes etc.) |
| Towels | 1/2 load | Terrycloth type laundry e.g. towels and bathrobes |
| Anti Shrink | 1/3 load | Cotton or linen fabrics and easy-care textiles which are still damp creases in textiles are reduced textiles are not completely dried - hang up textiles! |
| Sanitize | 1/2 load | Cotton fabrics for drying in higher temperatures to keep them more hygienic |
| Hand Wash/Wool | 1/3 load | Wool fabrics suitable for washing used to refresh or fluff up wool articles but not dry completely remove fabrics after program end, lay on flat surface and allow to dry |
| Bulky/Large Items | full load | Garments with down feather fillings, pillows and blankets but not quilts only dry one article at a time |
| Quick Dry Auto | 1/4 load | Laundry made of synthetic fibers, cotton or blended fabrics (for example) that needs to be dried quickly Values may differ from those specified depending on the type of fabric, mixture of laundry to be dried and residual moisture in the fabric |
| 🕒 Air Fluff | 1/3 load | All type of fabrics for freshing up or airing of items of laundry that have been worn for a short period of time |
| 🕒 Time Dry | 1/3 load | Pre-dried, multi-layered, sensitive fabrics made of acrylic fibers or separate small items of laundry also for subsequent drying |
| Quick 40 | 1/3 load | Multi-layered, sensitive fabrics made of acrylic fibers or separate small items of laundry also for subsequent drying |
| SuperQuick 15 | < 1/4 load | For optimal drying a maximum of 5 business shirts after drying, iron or hang up the remaining moisture will be evenly distributed |
| Delicates | 1/4 load | Lingerie made of synthetic fibers, cotton or blended fabric |
| Jeans | 1/2 load | Fabrics made from jeans/denim |
| Permanent Press | 1/2 load | Trousers, dresses, skirts, shirts, blouses, leggings, sports clothing with synthetic-rich fibers, bed linen and table linen, track suits, paraks, blankets, lingerie |

Tip: For best results it is recommended to load the amount of textiles into the drum according to the fabric type and amount shown in the above table.



Optional program settings

Low Heat

Reduced temperature for delicate fabrics, e.g. polyacrylic, polyamide or elastane, with longer drying time.

Observe the care information or symbols on the textile's label.

Time Dry

Available only for Time programs:  **Air Fluff** and  **Time Dry**,

→ *Program selection table; Page 34*

can be selected from minimum 20 minutes to maximum 3:30 hours, in 10-minute steps.

Remote Start

Briefly pressing the **Remote Start** button activates or deactivates the Remote start function. Activating the Remote start function enables the appliance to be started remotely via the Home Connect app.


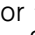
NOTICES

- Remote start can only be activated if the appliance door is closed and the appliance is connected to your home network.
- Remote start will be deactivated in the following circumstances:
 - The door is opened.
 - There is a power failure.
 - The **Remote Start** button was briefly pressed again deactivating it.
 - The center of the Program Selector was pressed switching off the appliance.
 - Once the program has ended.
 - A program was not started within a 24 hour period after activating the Remote start function.
 - Any button was pressed or the program selector was turned on the control panel.

Pressing and holding the **Remote Start** button for at least 3 seconds enters Home Connect settings.

Finish in

The program end (Finish in) time can be set in one hour increments to a maximum of 24 h (hours).

After selecting the desired drying program (at the dial) but before pressing the Start/Pause button, press the **Finish in**  or  button until the desired time is displayed, e.g. 8 h. Press the Start/Pause button to start the dryer.

NOTICE: The cycle duration is included in the set Finish in time.

Here is an example of 1hr:30min cycle time and an 8 h Finish in time. 8 h is displayed (until Energy-saving mode activates) and counts down (approximately 6hr:30min) until the drying cycle begins (at 1hr:30min) then the cycle duration 1:30 is displayed and drying begins. Total time approximately 8 hours.

Dryness Level

Select the dryness level that you require for the laundry you need to dry.

Extra Dry:

Heavy, multi-layered or thick laundry that does not dry easily.

Dry:

Normal weight textiles.

Damp:

Normal weight textiles that need to be slightly damp. Suitable for ironing or hanging up.

Level Adjust

This option adjusts the drying time in small steps for certain programs.

Default setting = OFF (no LED Symbol shown)

Selectable values: OFF, +1, +2, +3

The **Level Adjust** is retained until changed.

NOTICE: The higher the number value the increased time of drying.

End Signal

Use the End Signal button to activate or deactivate the audible signal that sounds to indicate that the program has ended. If the setting has been selected, the button's indicator light will be lit and the signal tone is activated.

Wrinkle Block

If the **Wrinkle Block** option is activated it prevents the laundry from creasing or wrinkling. The drum rotates at specific intervals after the drying process allowing the load to remain loose and fluffy until removed.

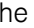
If the **Wrinkle Block** button is activated, this function is set to 60 or 120 minutes.

The laundry should be removed before this time has elapsed.

Appliance settings

Child lock

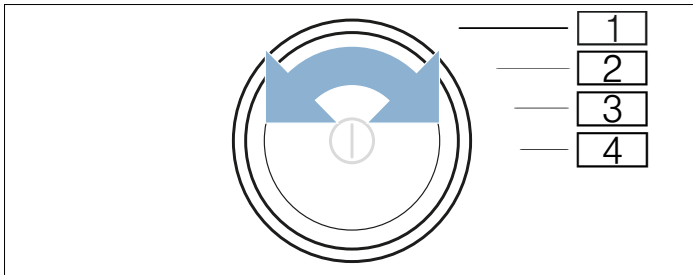
You can secure the appliance against inadvertent changing of the set functions. To do this, activate the Child lock after cycle start.

To **Activate/Deactivate**, press **Finish in** — and + for approximately 3 seconds. In the display field, you will see the  symbol light indicating the Child lock is active.

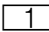
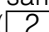
NOTICE: The Child lock will remain activated after the end of the cycle and the door will remain locked. Even switching the appliance off and on will keep the door locked and will not deactivate the Child lock. You must deactivate Child lock and, if necessary, activate it again.

Activating setting mode

In order to change the default appliance settings described below, you will first need to enter or activate setting mode.



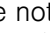

To enter or activate the setting mode:

1. Switch on the appliance. The indicator lamp of the program on position 1 () lights up.
2. Press **Dryness Level** button and, at the same time, turn the program selector to position 2 (- 3. Release **Dryness Level** button.

The setting mode is now activated.


Changing the audible signal volume

You can adjust the volume of audible notification signals (that indicate that a program has ended, for example) and audible button signals by turning the program selector to the following positions:

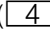
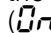

- 2 () : Audible notification signal volume
selectable values: *1* = quiet, *2* = medium, *3* = loud, *4* = very loud
- 3 () : Audible button signal volume
selectable values: *0* = off, *1* = quiet, *2* = medium, *3* = loud, *4* = very loud

1. Turn the program selector to the required position.
2. Use the **Finish in** + or — button to set the volume you require.

Switching the automatic switch-off function on/off

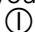
If the appliance is not used for an extended period, it may automatically switch itself off until a program starts or when a program has ended in order to save energy. It can be switched back on again at any time by pressing the power button .

You can switch the appliance's automatic switch-off function on or off as follows:

1. Turn the program selector to position 4 (- 2. Use the **Finish in** + or — button to switch the appliance's automatic switch-off function on () or off (

NOTICE: The automatic switch-off function cannot be activated if Wi-Fi is activated.

Exiting setting mode

Once you have applied all the settings, press the power button  to switch off the appliance.

The settings you have selected will be saved and will take effect the next time the appliance is switched on.

Cleaning and maintenance

USER-MAINTENANCE INSTRUCTIONS

Your appliance is designed to give you years of service. Observe the following instructions to maintain your appliance and keep it in top operating condition.

▲ WARNING

RISK OF EXPLOSION

Never use solvents or highly flammable liquids for cleaning.

▲ CAUTION

Improper cleaning may damage the dryer or cause injury.

Do not spray with a hose or pressure washer.

Do not use scouring agents or all-purpose cleaners.

Do not use steam cleaners.

Do not use bleach-based wipes.

Cleaning the housing and control panel

Wipe the housing and fascia with a soft cloth and soapy water only.

Wipe the drum, door seal and inside of the door with a damp cloth only.

NOTICE: Do not clean with a water jet.

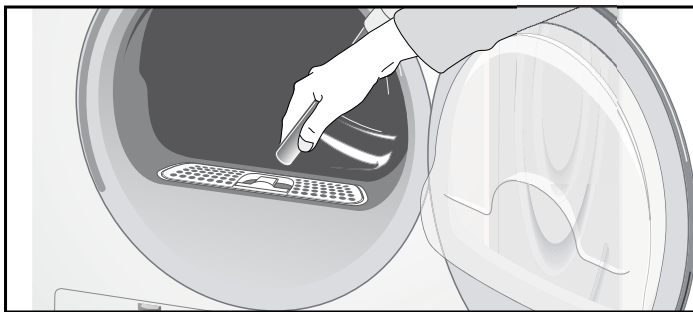
Remove detergent and cleaning agent residue immediately.

During drying, water may occasionally accumulate between the window and the seal. This does not affect the proper operation of your dryer.

Cleaning the lint filter area

Over time, lint from the drying process collects in the lint filter area.


This lint can be easily removed using a vacuum cleaner.



Cleaning the lint filter

A dirty filter extends the drying time and increases energy consumption.

The filter should be cleaned before or after each drying process.

If  indicator lights up during a drying program, clean the filter immediately.

Tip: The program interrupts automatically.

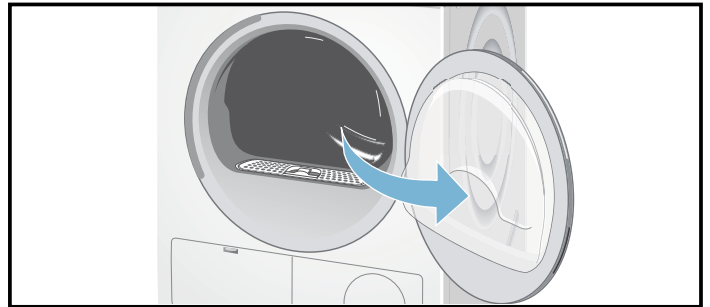
To clean the lint filter:

1. Press the center of the Program Selector to switch off the appliance.

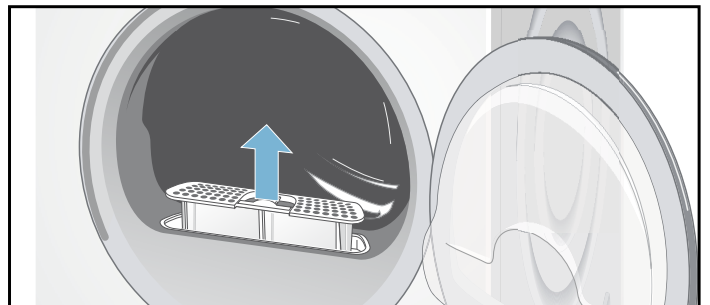
▲ CAUTION

The inside of the door heats up during the drying process. The drum, the door and the laundry may be hot.

2. Open the door.

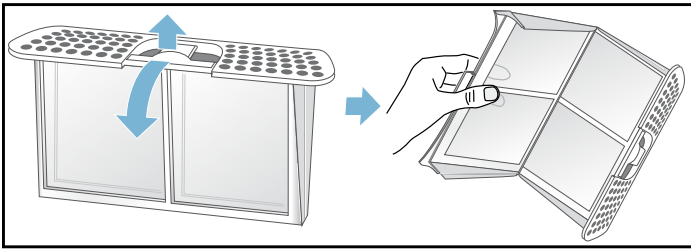


3. Pull out filter.

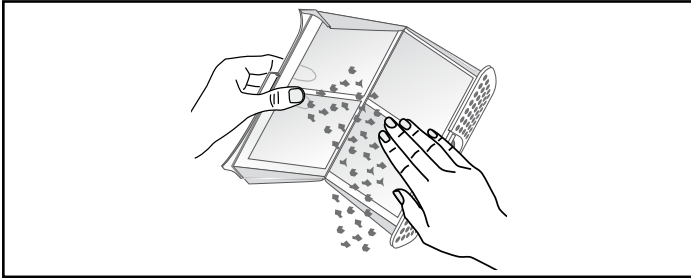


Remove the fluff from the fluff filter recess. Ensure that no fluff falls into the open shaft.

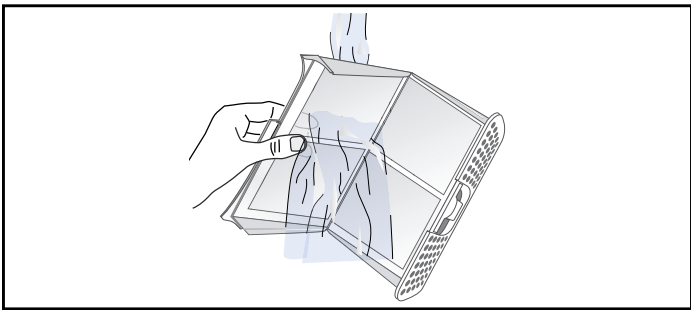
4. Open the filter.



5. Remove fluff (run hand over filter).

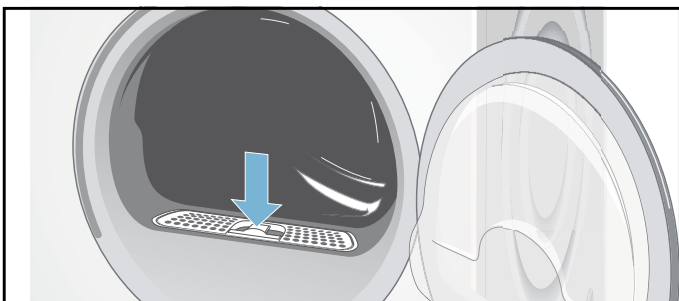


NOTICE: Severely dirty or clogged lint filter should be rinsed under warm running water.

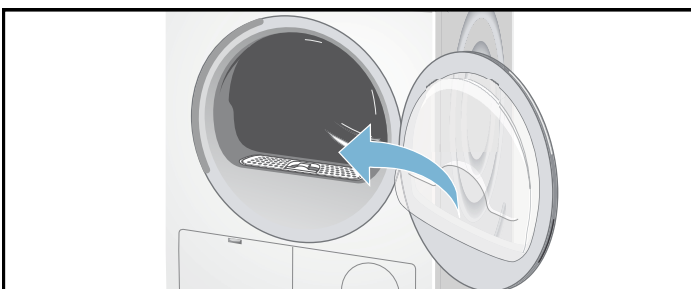


The filter must be dried thoroughly before being placed back into dryer.

6. Close the filter and re-insert it.



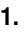
7. Close the door.

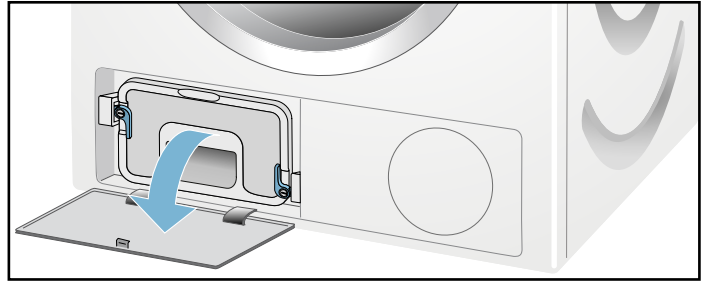


Cleaning the heat exchanger

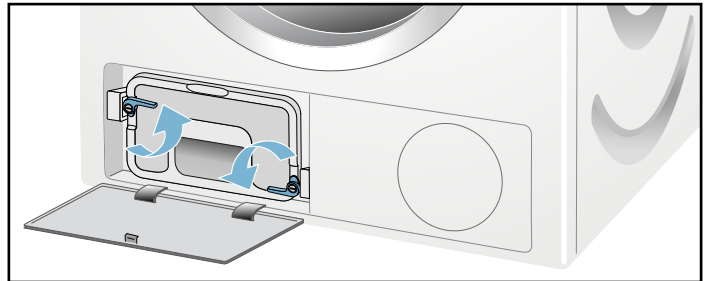
The heat exchanger requires periodic cleaning (recommended once per month under normal drying conditions). The frequency of cleaning depends on the amount and type loads being dried.

To clean the heat exchanger:

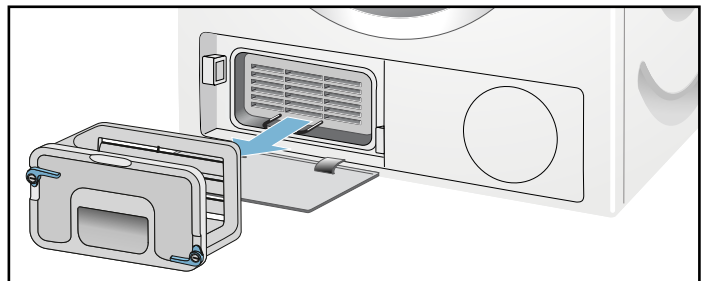
1. If the dryer is hot, run on  **Air Fluff** program to allow the dryer to cool down.
2. Residual water may escape, place an absorbent cloth under the maintenance flap.
3. Unlock the maintenance flap and open it completely.



4. Turn both locking levers towards each other.

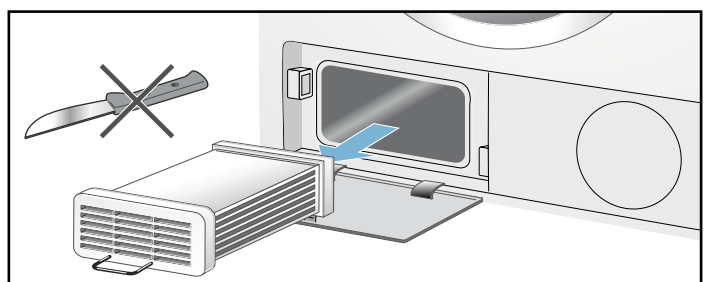


5. Pull out the heat exchanger cap.

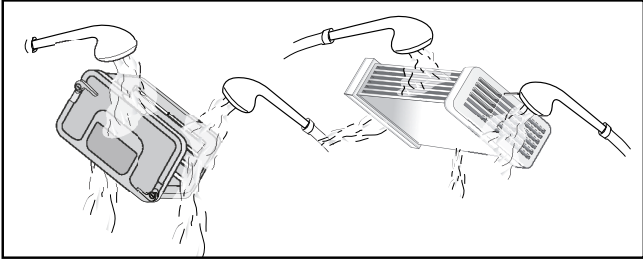


6. Remove the heat exchanger.

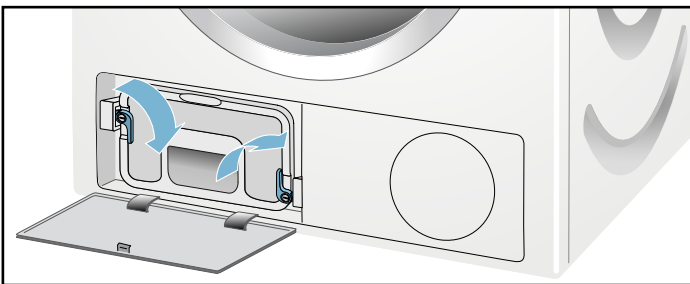
NOTICE: Do not damage the heat exchanger! Clean with warm water only. Do not use hard or sharp edged objects!



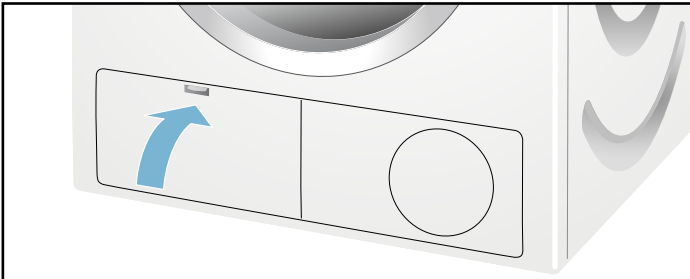
- Rinse the heat exchanger and the cap on all sides with a jet of water to completely remove all of the lint and fluff.



- Remove all lint and fluff from the seals on the dryer and heat exchanger.
- Allow the cap and the heat exchanger to dry fully.
- First insert the heat exchanger, then the cap.
- Turn back both locking levers.



- Close the maintenance flap until it locks into position.



- Look in the Troubleshooting table to reset the maintenance indication.
→ *Troubleshooting; Page 40*

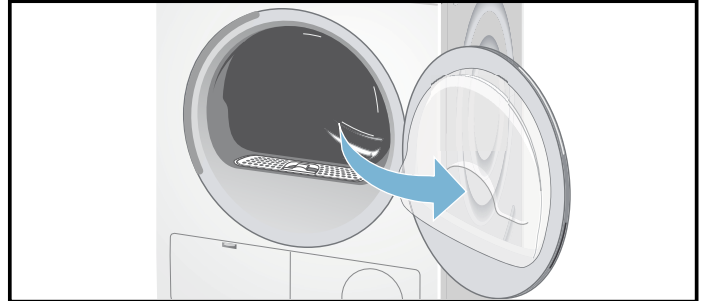
Cleaning the moisture sensors

The dryer is equipped with a stainless-steel moisture sensor. The moisture sensor measures how damp the laundry is.

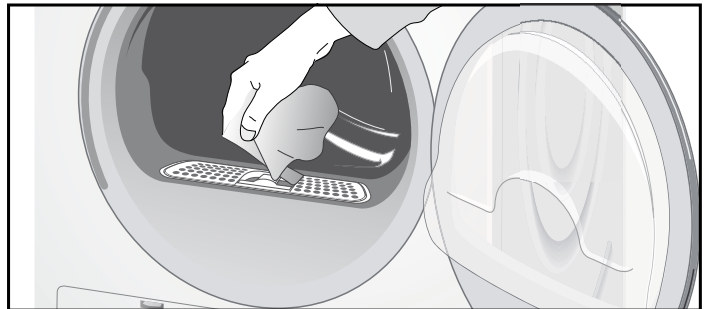
After long periods of usage the moisture sensor may become covered by a fine layer of limescale or residues of detergents and textile care products. Such residues must be removed regularly as the sensor function and in consequence the drying result may be impaired.

To clean the moisture sensors:

- Open the door.



- The deposit on the sensors can easily be removed by wiping the sensors (the two bars next to the lint filter) with a cloth and a little white vinegar.



NOTICE: Use white vinegar only!
Clean the moisture sensors once a month.

Maintenance of drain hose

If **DR** indicator lights up check the drain hose for kinks, restrictions or blockage.

NOTICE: If **DR** indicator still lights up after the maintenance, you should contact customer service or your local dealer.

Troubleshooting

Introduction

NOTICE: Before doing maintenance work or trying to fix a problem, press the center of the program selector to switch off the appliance.

If the power supply is interrupted during operation, the program will not continue when power is restored. When power is restored, confirm program and selected options are as desired and then press the Start/Pause button.

⚠ WARNING

RISK OF INJURY TO SKIN

The door, the drum and the laundry may be hot.

⚠ WARNING

RISK OF ELECTRIC SHOCK! EXPLOSION HAZARD

Repairs or replacement of parts should be carried out by authorized technicians only.

Before calling customer service, check whether you can rectify the fault yourself by means of the following table.

If a fault cannot be rectified or a repair is required:


1. Press the center of the Program Selector to switch off the appliance.
2. Disconnect the dryer from the power outlet.
3. Call customer service.
→ *Customer service; Page 5*

General Troubleshooting

Often when you encounter a problem it will be something minor. Before you call customer service, consider the suggestions and instructions below:

NOTICE: The troubleshooting items listed below can help you resolve minor issues with your dryer quickly and without the necessity of a service call.

Determining the Problem

| Problem | Possible cause(s) | Solution(s) |
|--|---|---|
| Dryer does not start. Start/Pause indicator light does not illuminate. | Power cord end not inserted at all or not inserted correctly. | Insert power cord end correctly. |
| | A fuse is blown or breaker is tripped. | Replace fuse or reset breaker. |
| | Start/Pause button not pressed. | Press Start/Pause button. |
| | Door not closed properly. | Check if laundry is caught in the door. Close the door until a click is heard. |
| The display panel and indicator lights switch off, Start/Pause indicator flashes. | Energy-saving mode is activated. | Press any button to activate the display. → <i>Environmentally friendly use of your dryer; Page 9</i> |
| The display panel and Start/Pause indicator switch off. | Automatic switch-off function is active. | Press the center of the Program Selector to switch on the appliance. |
|  indicator lights up. | Lint filter dirty. | Clean lint filter. → <i>Cleaning the lint filter; Page 37</i> Press the Start/Pause button to reset the displayed indication and then press Start/Pause button again to reset the appliance if necessary. |
| | Heat exchanger dirty. | Clean heat exchanger. → <i>Cleaning the heat exchanger; Page 38</i> Press the Start/Pause button to reset the displayed indication and then press Start/Pause button again to reset the appliance if necessary. |
| DR indicator lights up. Water has not drained completely. | Drain hose is blocked. | Check drain hose. → <i>Maintenance of drain hose; Page 39</i> Check drain hose connection conditions. |
| Water is leaking out. | Dryer is not leveled. | Level the dryer. → <i>Leveling the dryer; Page 18</i> |
| | The heat exchanger seal is dirty. | Clean the heat exchanger seal. → <i>Cleaning the heat exchanger; Page 38</i> |
| | Drain hose is leaking. | Check entire length of drain hose for leaks; replace if necessary. Check that hose is clamped on hose barb at back of the dryer securely. |
| Program terminates shortly after starting. | Laundry is not loaded. | Load the laundry. → <i>Loading the laundry; Page 27</i> |
| | Load too small for selected program. | Use time program. → <i>Program selection; Page 26</i> → <i>Program selection table; Page 34</i> |
| | Loaded laundry is too dry. | Check the loaded laundry. If it is dry, open the door, remove laundry and press the center of the Program Selector to switch off the appliance. |
| The door opens by itself. | The door not closed properly. | Close the door until a click is heard. |
| Creasing. | Laundry load exceeded. | Do not exceed the maximum load for selected program. Remove items of laundry immediately after the end of the program, hang them up and pull into shape. Press the center of the Program Selector to switch off the appliance. → <i>Program selection table; Page 34</i> |
| | Unsuitable program selected. | Select Wrinkle Block button to prevent the laundry from creasing or wrinkling. → <i>Wrinkle Block; Page 35</i> |

| Problem | Possible cause(s) | Solution(s) |
|---|--|--|
| Drying result is not satisfactory (laundry feels too damp). | Warm laundry may feel more damp than it really is. | Remove items of laundry immediately after the end of the program and press the center of the Program Selector to switch off the appliance. |
| | The selected program does not suit the load. | Use another drying program or, in addition, select the time program. → <i>Program selection; Page 26</i> → <i>Program selection table; Page 34</i> |
| | Dryness level is not adjusted. | Use Level Adjust to adjust the dryness level. → <i>Level Adjust; Page 35</i> |
| | Fine layer of limescale or detergent and textile care products residues on the moisture sensors. | Clean the moisture sensors. → <i>Cleaning the moisture sensors; Page 39</i> |
| | Program termination e.g. main power supply failure, door open or maximum drying time reached. | See the problem(s) mentioned in this table. |
| Drying time too long. | Initial load is too wet. | Spin laundry at higher speed in the washing machine, before drying. Switch off the dryer, and then turn it on again. |
| | Lint filter and/or heat exchanger is dirty. | Clean lint filter → <i>Cleaning the lint filter; Page 37</i> and/or heat exchanger. → <i>Cleaning the heat exchanger; Page 38</i> |
| | Insufficient supply of air. Air inlet possibly blocked. | Ensure that air can circulate. Do not obstruct the air inlet on the front of the dryer. |
| | Ambient temperature higher than 95°F/35°C. | Ventilate the room. |
| Program does not start Finish in (remaining) time is displayed. | A delayed starting time has been selected and activated. | Drying cycle will begin at proper time to complete at the selected Finish in time. |
| Program does not start -  symbol lit up. | Child lock is activated. | Deactivate Child lock. → <i>Child lock; Page 36</i> |
| One or more indicator lights are flashing. | Installation conditions are not adequate. | Check the installation conditions. → <i>Electrical Connections; Page 16</i> |
| | Fault in program sequence or malfunction. | Switch off the dryer, allow it to cool down, switch back on and restart the program. |
| Power failure. | | Remove laundry from the dryer immediately and spread out. This allows the heat to dissipate. Be careful as the door, the drum and the laundry may be hot. |
|  does not appear in the display panel. | Wi-Fi is switched off. | To connect to your home network, switch on Wi-Fi. → <i>Home Connect; Page 29</i> |
| | Wi-Fi is switched on but a connection to the home network cannot be established. | Check whether your home network is available or try to connect to your home network again. |
| Home Connect is not working. | | <ul style="list-style-type: none"> You can find solutions to problems with Home Connect at www.home-connect.com. The use of the Home Connect functionality depends on the availability of the Home Connect Services in your country. Check here, www.home-connect.com, to see if the Home Connect services are available in your area and further information. |

If troubleshooting did not solve your issue contact customer service → *Customer service; Page 5*

STATEMENT OF LIMITED PRODUCT WARRANTY

Bosch Clothes Dryer

What this Warranty Covers & Who it Applies to:

The limited warranty provided by BSH Home Appliances (“Bosch”) in this Statement of Limited Product Warranty applies only to the Bosch appliance sold to you, the first using purchaser, provided that the Product was purchased:

- For your normal, household (non-commercial) use, and has in fact at all times only been used for normal household purposes.
- New at retail (not a display, “as is”, or previously returned model), and not for resale, or commercial use.
- Within the United States or Canada, and has at all times remained within the country of original purchase.

The warranties stated herein apply only to the first purchaser of the Product and are not transferable.

Please make sure to return your registration card; while not necessary to effectuate warranty coverage, it is the best way for Bosch to notify you in the unlikely event of a safety notice or product recall.

Limitation for Third Party Accessories:

Third party accessories, other than those shipped with your Bosch appliance, and any consequential damages resulting therefrom, are not covered by this warranty. This limitation expressly includes the implied warranties of merchantability and fitness for a particular purpose, which are also expressly excluded with respect to third party accessories, other than those shipped with your Bosch appliance. Use of third party accessories, other than those shipped with your Bosch appliance, does not void this warranty on any other part, and all other provisions of this warranty remain in effect.

How Long the Warranty Lasts:

Bosch warrants that the Product is free from defects in materials and workmanship for a period of three hundred sixty-five days (365) days from the date of purchase. The foregoing timeline begins to run upon the date of purchase, and shall not be stalled, tolled, extended, or suspended, for any reason whatsoever. This product is also warranted to be free from cosmetic defects in material and workmanship (such as scratches of stainless steel, paint/porcelain blemishes, chips, dents, or other damage to the finish) of the Product, for a period of thirty (30) days from the date of purchase or closing date for new construction. This cosmetic warranty excludes slight color variations due to inherent differences in painted and porcelain parts, as well as differences caused by kitchen lighting, product location, or other similar factors. This cosmetic warranty specifically excludes any display, floor, “As Is”, or “B” stock appliances.

SCOPE OF EXTENDED LIMITED WARRANTY

Bosch will repair or replace, free of charge, any printed circuit boards, drive motor or component part of the drive motor that proves defective under conditions of normal home use during the first seven hundred thirty (730) days from the date of purchase, labor charges excluded.

Repair/Replace as Your Exclusive Remedy:

During this warranty period, Bosch or one of its authorized service providers will repair your Product without charge to you (subject to certain limitations stated herein) if your Product proves to have been manufactured with a defect in materials or workmanship. If reasonable attempts to repair the Product have been made without success, then Bosch will replace your Product (upgraded models may be available to you, in Bosch’s sole discretion, for an additional charge). All removed parts and components shall become property of Bosch at its sole option. All replaced and/or repaired parts shall assume the identity of the original part for purposes of this warranty and this warranty shall not to be extended with respect to such parts. Bosch’s sole liability and responsibility hereunder is to repair manufacturer-defective Product only, using a Bosch authorized service provider during normal business hours. For safety and property damage concerns, Bosch highly recommends that you do not attempt to repair the Product yourself, or use an un-authorized servicer; Bosch will have no responsibility or liability for repairs or work performed by a non-authorized servicer. If you choose to have someone other than an authorized service provider work on your Product, THIS WARRANTY WILL AUTOMATICALLY BECOME NULL AND AVOID.

Authorized service providers are those persons or companies that have been specially trained on Bosch products, and who possess, in Bosch’s opinion, a superior reputation for customer service and technical ability (note that they are independent entities and are not agents, partners, affiliates or representatives of Bosch). Notwithstanding the foregoing, Bosch will not incur any liability, or have responsibility, for the Product if it is located in a remote area (more than 100 miles from an authorized service provider) or is in a reasonably inaccessible, hazardous, threatening, or treacherous locale, surroundings, or environment; in any such event, if you request, Bosch would still pay for labor and parts and ship the parts to the nearest authorized service provider, but you would still be fully liable and responsible for any travel time or other special charges by the service company, assuming they agree to make the service call.

Out of Warranty Product:

Bosch is under no obligation, at law or otherwise, to provide you with any concessions, including repairs, prorates, or Product replacement, once this warranty has expired.

Warranty Exclusions:

The warranty coverage described herein excludes all defects or damage that are not the direct fault of Bosch, including without limitation, one or more of the following:

- Use of the Product in anything other than its normal, customary and intended manner (including without limitation, any form of commercial use, use or storage of an indoor product outdoors, use of the Product in conjunction with air or water-going vessels).
- Any party's willful misconduct, negligence, misuse, abuse, accidents, neglect, improper operation, failure to maintain, improper or negligent installation, tampering, failure to follow operating instructions, mishandling, unauthorized service (including self performed "fixing" or exploration of the appliance's internal workings).
- Adjustment, alteration or modification of any kind.
- A failure to comply with any applicable state, local, city, or county electrical, plumbing and/or building codes, regulations, or laws, including failure to install the product in strict conformity with local fire and building codes and regulations.
- Ordinary wear and tear, spills of food, liquid, grease accumulations, or other substances that accumulate on, in, or around the Product.
- Any external, elemental and/or environmental forces and factors, including without limitation, rain, wind, sand, floods, fires, mud slides, freezing temperatures, excessive moisture or extended exposure to humidity, lightning, power surges, structural failures surrounding the appliance, and acts of God.

In no event shall Bosch have any liability or responsibility whatsoever for damage to surrounding property, including cabinetry, floors, ceilings, and other structures or objects around the Product. Also excluded from this warranty are Products on which the serial numbers have been altered, defected, or removed; service visits to teach you how to use the Product, or visits where there is nothing wrong with the Product; correction of installation problems (you are solely responsible for any structure and setting for the Product, including all electrical, plumbing or other connecting facilities, for proper foundation/flooring, and for any alterations including without limitation cabinetry, walls, floors, shelving, etc.); and resetting of breakers or fuses.

TO THE EXTENT ALLOWED BY LAW, THIS WARRANTY SETS OUT YOUR EXCLUSIVE REMEDIES WITH RESPECT TO PRODUCT, WHETHER THE CLAIM ARISES IN CONTRACT OR TORT (INCLUDING STRICT LIABILITY, OR NEGLIGENCE) OR OTHERWISE. THIS WARRANTY IS IN LIEU OF ALL OTHER WARRANTIES WHETHER EXPRESS OR IMPLIED. ANY WARRANTY IMPLIED BY LAW, WHETHER FOR MERCHANTABILITY OR FITNESS FOR A PARTICULAR PURPOSE, OR OTHERWISE, SHALL BE EFFECTIVE ONLY FOR THE PERIOD THAT THIS EXPRESS LIMITED WARRANTY IS EFFECTIVE. IN NO EVENT WILL THE MANUFACTURER BE LIABLE FOR CONSEQUENTIAL, SPECIAL, INCIDENTAL, INDIRECT, "BUSINESS LOSS", AND/OR PUNITIVE DAMAGES, LOSSES, OR EXPENSES, INCLUDING WITHOUT LIMITATION TIME AWAY FROM WORK, HOTELS AND/OR RESTAURANT MEALS, REMODELLING EXPENSES IN EXCESS OF DIRECT DAMAGES WHICH ARE

DEFINITELY CAUSED EXCLUSIVELY BY BOSCH, OR OTHERWISE. SOME STATES DO NOT ALLOW THE EXCLUSION OR LIMITATIONS ON HOW LONG AN IMPLIED WARRANTY LASTS, SO THE ABOVE LIMITATIONS MAY NOT APPLY TO YOU. THIS WARRANTY GIVES YOU SPECIFIC LEGAL RIGHTS, AND YOU MAY ALSO HAVE OTHER RIGHTS WHICH VARY FROM STATE TO STATE.

No attempt to alter, modify or amend this warranty shall be effective unless authorized in writing by an officer of BSH.

How to Obtain Warranty Service:

To obtain warranty service for your Product, you should contact Bosch Customer Service Department.

BSH Home Appliances Corporation - 1901 Main Street, Suite 600 / Irvine, CA 92614 / 1-800-944-2904



9001279669
9706



BOSCH

1901 Main Street, Suite 600 • Irvine, CA 92614 • 1-800-944-2904
www.bosch-home.com • © 2012 BSH Home Appliances Corporation