

Stair Step Scribe 2™



Stair treads are almost never square, which makes fitting flooring on stairs with standard tools difficult. We have a solution: Create perfect treads and risers every time with the Stair Step Scribe 2™! Fast, easy to use, accurate.

Item # **BT91-0048**

Bullet Vinyl Glider

The Bullet Vinyl Glider gives the professional an easy solution to rip-cuts. Make straight, clean, score-and-snap cuts on luxury vinyl planks, WPC, or luxury vinyl tile up to 9.5" wide.



Item # **BT92-2095**

Hone Stone



The Hone Stone is a necessary accessory for all MAGNUM™ and EZ™ Shears to ensure a consistent, high-quality clean cut, and is an excellent way to extend the life of any blade. Run the Hone Stone along the flat side of the shear's blade after each job, and the shear will continue to perform at the same level as it's first cut. With regular maintenance, a shear blade can outlast 20 saw blades. Requires no fluid or oil prior to or during use.

Item # **701S**

SlickShot™

Slick Shot is a spray-on lubricant that increases the life of a MAGNUM™ or EZ™ Shear when used regularly to keep the moving parts "tuned-up" and lubricated. Special water-based, low VOC formula that lubricates parts without creating an oily residue. Use on the shears' pins (vertical shafts) and bearing surfaces for best results. One bottle contains enough lubricant for 6 months of heavy use.



Item # **701SL**

Magnum Floor Driver



Designed by the installer for the installer. The ultimate solution to hardwood installation: a tapping block and hammer in one. Precise weight and curved edge to drive with ideal force, tapping hardwood or engineered wood planks into place without damaging tongues and edges. 5-year Bulletproof Warranty

Item # **MT93-0044**

Bullet Vinyl Cutter

The Bullet Vinyl Cutter makes quick, accurate cuts on vinyl plank flooring up to 9.5" (241mm) wide and 7/16" (12mm) thick. Achieve faster and easier installation of vinyl flooring while maintaining professional results.



Item # **BT92-2195**

All-Angle Fence

A must-have attachment for the MAGNUM Flooring and Siding Shears, providing a convenient guide for consistent, precise diagonal and straight cuts. Sets any angle 0 to 90°. Removable and adjustable for greater versatility. Built-in ruler for easy measurements and accuracy.



Models 213 - Order Item # **701AF**

Model 940 - Order Item # **740AF**

Shear Maintenance Kits

The Shear Maintenance Kit (SMK) is an essential for all shear owners. It extends tool life and provides "insurance" against down time from damaged blades and maintenance issues.

The kit's big bonus is a one-year extended warranty on any new or active warranty.

Each quality kit contains:

- Premium replacement blade
- Slick Shot – For Quiet Easy Cuts
- Hone Stone – For a Razor's Edge
- Bearing Grease – for Smooth Operation
- BladeStop Replacement*

*For Those Shears That Use BladeStops

Choose the kit that matches your shear – item numbers from 113-SMK to 920-SMK



Tapping Blocks

Solid, durable, high quality plastic tapping block is great for closing gaps during flooring installation. Ergonomic handle provides an excellent grip.

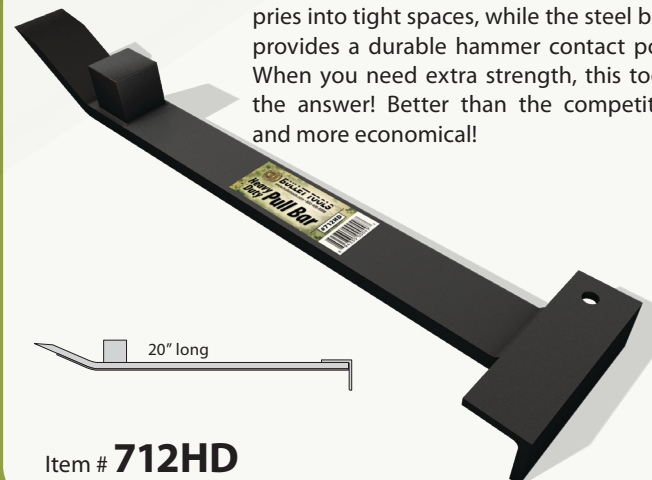


Ergonomic 3" x 7" Item #..... **711**

Pro Length 3" x 12" Item #..... **711P**

Heavy-Duty Pull Bar

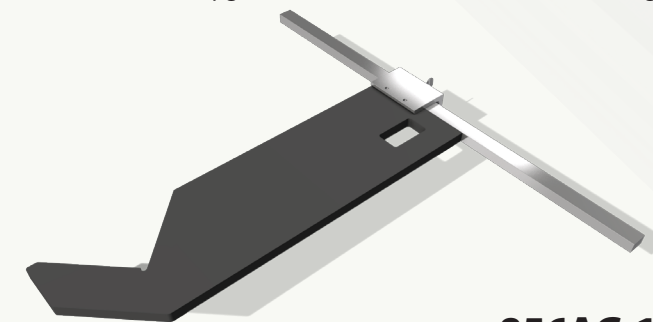
This mondo pull bar delivers. Its beveled end pries into tight spaces, while the steel block provides a durable hammer contact point. When you need extra strength, this tool is the answer! Better than the competition, and more economical!



Item # **712HD**

Angle Guide Kit

Provides a fixed "stop" point for repeat cuts. Kit includes Angle Guide and fence upgrade. Indicate size of shear when ordering.



For 13" Shear, order Item # **856AG-13**

For 20" Shear, order Item # **856AG-20**

For 26" Shear, order Item # **856AG-26**

Insulation Knife Kit

Quickly and cleanly cuts through foam and fiber insulation products like batt Insulation, Denim/Bonded Logic and fiberglass, without dust and debris.



CENTERFIRE

Kit Includes:

- 7" (175mm) Razor-Edged Blade with Universal Tang
- Ergonomic Knife Handle
- Dual Grit Ceramic Sharpener

Item # **CK50-1110**

Universal Shear Stand

Sturdy, stable construction lets you cut with your Magnum™ or EZ Shear™ off the ground. Custom height for better leverage, with convenient folding support legs for easy storage and transportation. Durable steel frame construction with adjustable extensions. Quick action locking mounts allow easy removal and fast adjustment of shear.



Mounting brackets not included, see below.

Item # **709**

Bullet Tools Caps

You've just stepped up to a professional shear - show your pride! 100% brushed cotton twill cap with embroidered Bullet Tools emblem. Black also has "Owner's Edition" on brim. One size.



Item # **G100-CAMO**

Item # **G100-BLK**

Accessory Cross Reference

Accessory	Part #	009	113-FLR	120-FLR	126-FLR	213-SID	220	220-SID	226	520	526	613	620	909	913	920	930	940
All Angle Fence	701AF	●	●	●	●	●		●				●	●	●	●	●	●	●
40" All Angle Fence	740AF																	●
13" 45° Angle Fence	856AG-13		●			●							●		●			
20" 45° Angle Fence	856AG-20			●			●	●		●			●					
26" 45° Angle Fence	856AG-26				●				●		●							
30" 45° Angle Fence	856AG-30																●	
40" 45° Angle Fence	856AG-40																	●
Shear Stand	709	●	●	●	●	●	●	●					●	●	●	●	●	●
Magnum Mounting Kit	900MB												●	●	●	●	●	
EZ Mounting Kit	200MB	●	●	●	●	●	●	●	●									
Roll Casters	848-1												●	●	●	●	●	●

● = Compatible ● = Included

Mounting Brackets

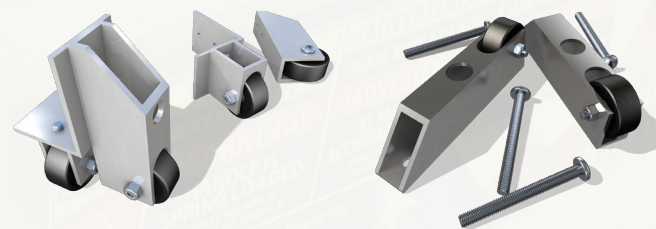
Kits contain all needed hardware for securely mounting your Shear to the #709 Universal Shear Stand shown elsewhere. Order according to your Shear model.



For models 009, 209, 213, 220, 226, 526 - order Item # **200MB**

For models 909, 913, 920 - order Item # **900MB**

Casters



Add smooth-rolling casters to your shear and let the cutter move along with you. Casters also serve as a wall gauge for quick cuts along walls without having to stop and measure. Solid rubber wheels and aluminum brackets for long-lasting durability and strength. Set of 2.

For EZ Shears

Item # **EA92-1000**

For Magnum shears

Item # **848-1**

TOOLS & ACCESSORIES



Vinyl Cutter

#BT92-2195 see page 2

Vinyl Glider

#BT92-2095 see page 2



BULLET TOOLS
Cutting-Edge Solutions for Tradesmen

208-772-0175 • BulletTools.com