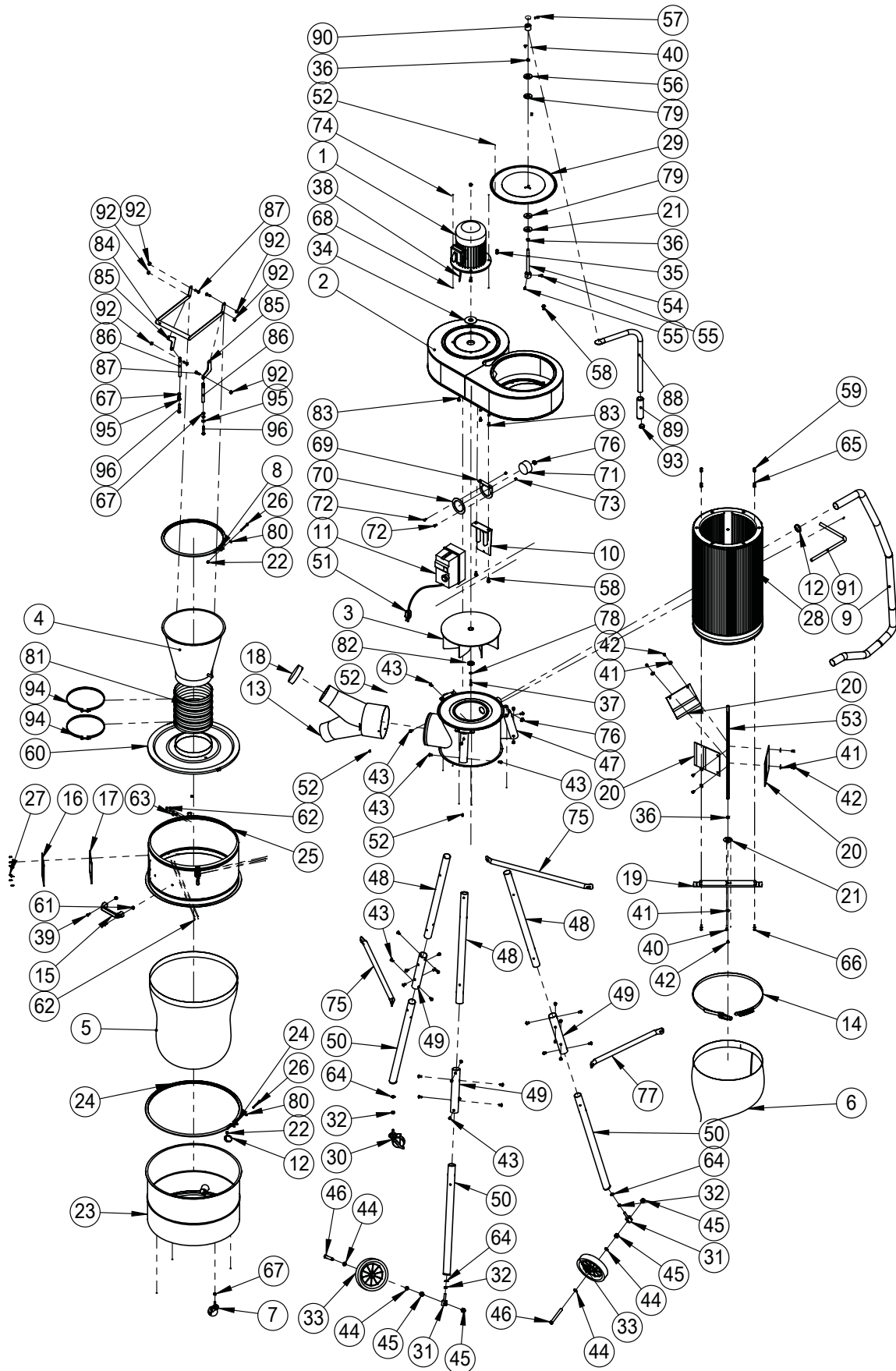


DIAGRAM 10-805CF



PARTS LIST

10-805CF

IMPORTANT: When ordering replacement parts, always give the model number, serial number of the machine and part number. Also a brief description of each item and quantity desired.

PART #	DESCRIPTION	SPECIFICATIONS	QTY
10805-01	MOTOR		1
10805-02	IMPELLER/SEPARATOR COVER		1
10805-03	ALUMINUM IMPELLER	12 3/4"	1
10805-04	LOWER CYCLONE SEPARATOR		1
10805-05	DRUM LINER BAG	(ITEM #10-827)	1
10805-06	COLLECTOR BAG (CANISTER)	(ITEM #10-837)	1
10805-07	SWIVEL CASTER	2" X 5/16"	1
10805-08	HOSE CLAMP	Ø 3/4"	1
10805-09	HOSE	1 1/2" X 1.8M	1
10805-10	SWITCH MOUNTING PLATE		1
10805-11	MAGNETIC SWITCH		1
10805-12	HOSE CLAMP	1 1/2"	2
10805-13	HOSE Y-FITTING	6" X 4 X 2"	1
10805-14	BAG CLAMP	Ø 370	1
10805-15	PLASTIC HANDLE		1
10805-16	SQUARE PAD		1
10805-17	WINDOW		1
10805-18	INLET CAP	4"	1
10805-19	LOWER FIXING PLATE		1
10805-20	FLAP		3
10805-21	CANISTER FIXING PLATE		2
10805-22	FLANGE NUT	1/4"	8
10805-23	LOWER DRUM		1
10805-24	HOSE CLAMP	Ø 525	1
10805-25	UPPER DRUM		1
10805-26	HEX HEAD BOLT	1/4" X 2 1/2"	2
10805-27	RIVET	4-2	8
10805-28	1 MICRON CANISTER FILTER	(ITEM #10-807)	1
10805-29	CANISTER LID		1
10805-30	LOCKABLE SWIVEL CASTER	3" X 3/8"	1
10805-31	WHEEL MOUNTING BOLT		2
10805-32	NUT	3/8"	3
10805-33	WHEEL	7"	2
10805-34	O-RING		3
10805-35	KEY	7 X 7 X 25	1
10805-36	BEARING		3
10805-37	CAP SCREW	M6 X 30 MM	1
10805-38	MOTOR CORD		1
10805-39	PHILLIPS HEAD SCREW	1/4" X 5/8"	2
10805-40	PHILLIPS HEAD SCREW	M5 X 10	6
10805-41	FLAT WASHER	1/4" X 18	6
10805-42	HEX HEAD BOLT	M6	7
10805-43	CAP SCREW	5/16" X 1/2"	33
10805-44	WASHER	1/2" X 19MM	4
10805-45	NYLOCK NUT	1/2"	4
10805-46	HEX HEAD BOLT	1/2" X 4"	2
10805-47	UPPER CYCLONE SEPARATOR		1
10805-48	UPPER LEG		3

PARTS LIST

10-805CF

IMPORTANT: When ordering replacement parts, always give the model number, serial number of the machine and part number. Also a brief description of each item and quantity desired.

PART #	DESCRIPTION	SPECIFICATIONS	QTY
10805-49	CONNECTOR		3
10805-50	LOWER LEG (2 LONG LEGS +1 SHORT LEG)		3
10805-51	POWER CORD W/ PLUG		1
10805-52	CAP SCREW	3/16" X 3/8"	25
10805-53	SPINDLE		1
10805-54	FILTER HANDLE MOUNT ARM		1
10805-55	CAP SCREW	M6 X 12MM	2
10805-56	BEARING FIXING PLATE		1
10805-57	HEX HEAD BOLT	M6" X 16	1
10805-58	FLANGE BOLT	5/16" X 3/4"	8
10805-59	NUT	M5	4
10805-60	DRUM LID		1
10805-61	CAP NUT	1/4"	2
10805-62	PHILLIPS HEAD SCREW	M4 X 8MM	8
10805-63	LOCK NUT	M4	11
10805-64	SPROCKET WASHER	3/8"	3
10805-65	FIXING PLATE		2
10805-66	PHILLIPS HEAD SCREW	M5 X 15	4
10805-67	NUT	5/16"	4
10805-68	HEX HEAD BOLT	5/16" X 3/4"	4
10805-69	PRESSURE GAUGE FIXING PLATE		1
10805-70	PRESSURE GAUGE FRAME		1
10805-71	PRESSURE GAUGE		1
10805-72	CAP SCREW	1/4" X 3/4"	2
10805-73	NUT	1/4"	4
10805-74	CAP NUT	5/16"	4
10805-75	LONG CROSS BRACE	520 MM	2
10805-76	HOSE CLAMP	3/4"	2
10805-77	SHORT CROSS BRACE	410 MM	1
10805-78	LOCK WASHER	M6	1
10805-79	RUBBER PACKING		2
10805-80	FLAT WASHER		2
10805-81	CENTRAL CONNECTION HOSE	8"	1
10805-82	IMPELLER WASHER		1
10805-83	FLANGE BOLT	1/4" X 1/2"	1
10805-84	QUICK-REMOVE DRUM LID HANDLE		1
10805-85	CONNECTING ARM		2
10805-86	DRAW BAR		2
10805-87	CAP SCREW	5/16" X 1/2"	4
10805-88	CANISTER HANDLE		1
10805-89	FOAM HANDLE		1
10805-90	BUSHING		1
10805-91	CLEAR HOSE	1/2"	1
10805-92	NYLOCK NUT	5/16"	6
10805-93	END CAP	1"	1
10805-94	HOSE CLAMP	8"	2
10805-95	FLAT WASHER	5/16"	2
10805-96	HEX HEAD BOLT	5/16" X 2"	2