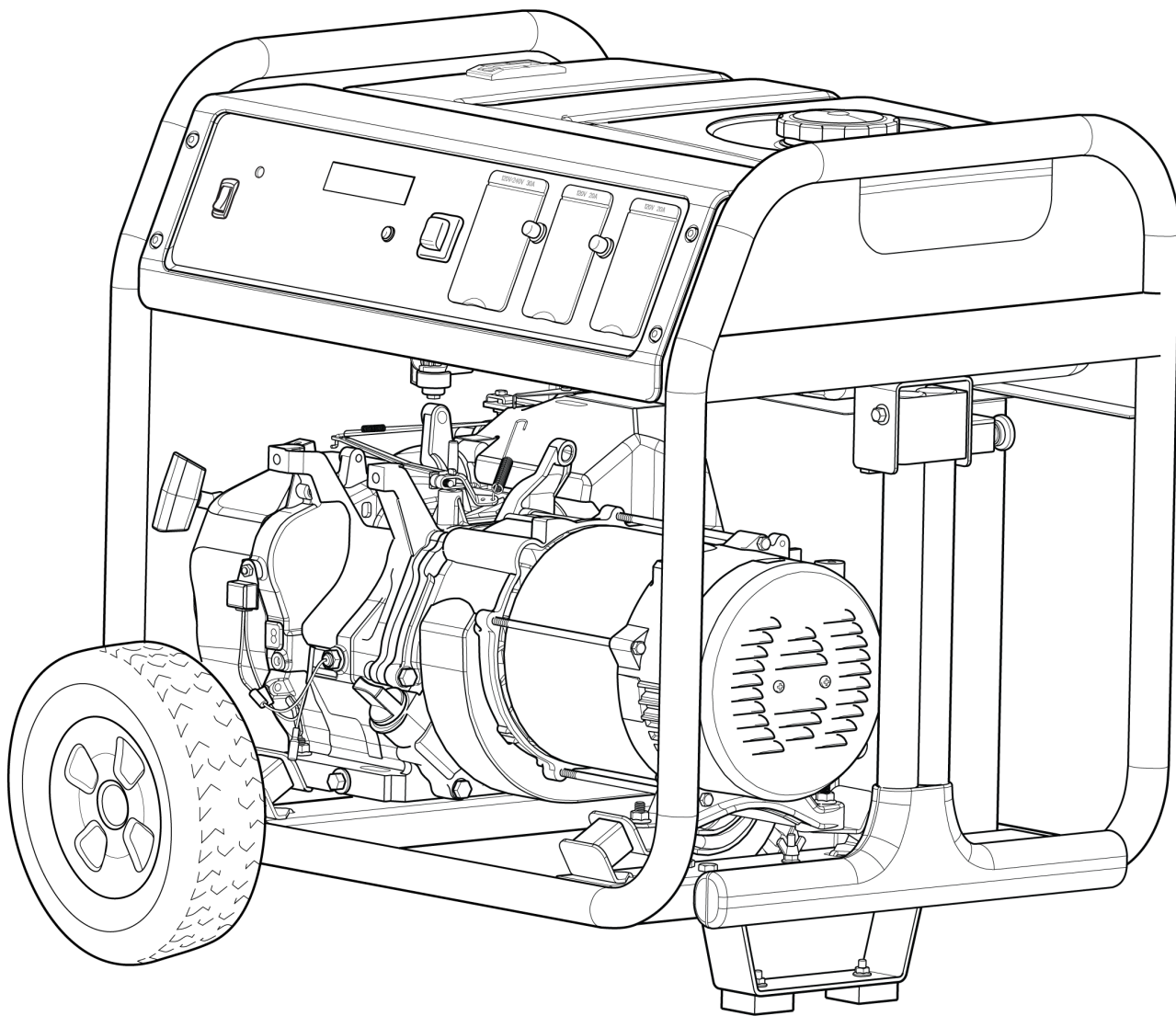




Parts Manual

Mfg. No: 030728-00
6,250 Watt Storm Generator, Briggs &



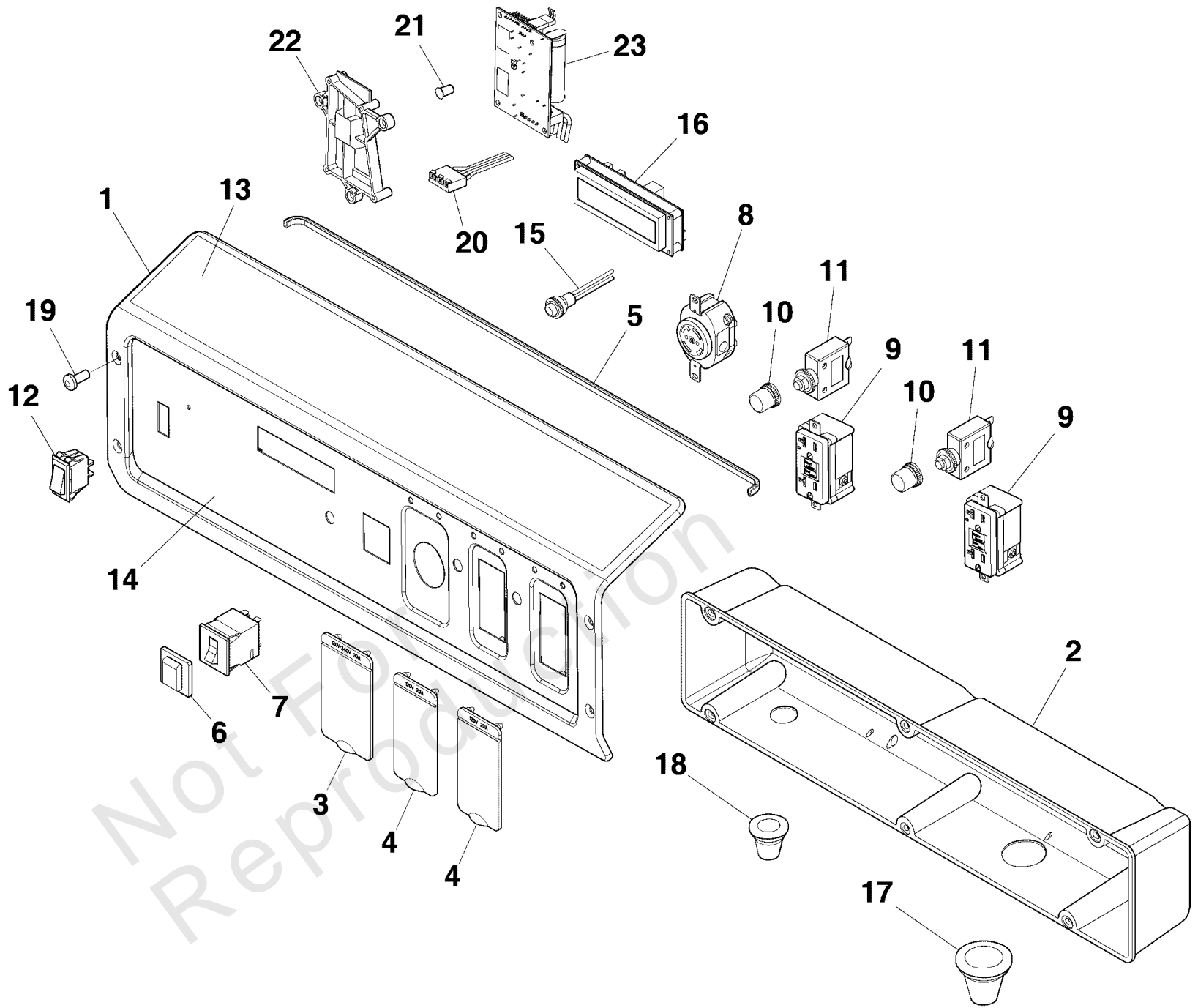
| Model Components | Page |
|---------------------------------|-------------|
| Control Panel..... | 4 |
| Main Unit..... | 6 |
| Wheel Kit (80005137)..... | 10 |
| Wiring Diagram..... | 12 |
| Wiring Schematic..... | 14 |
| Torque Specification Chart..... | 16 |

Not For
Reproduction

Control Panel

Note: Unless noted otherwise, use the standard torque specifications

Mfg. No: 030728-00



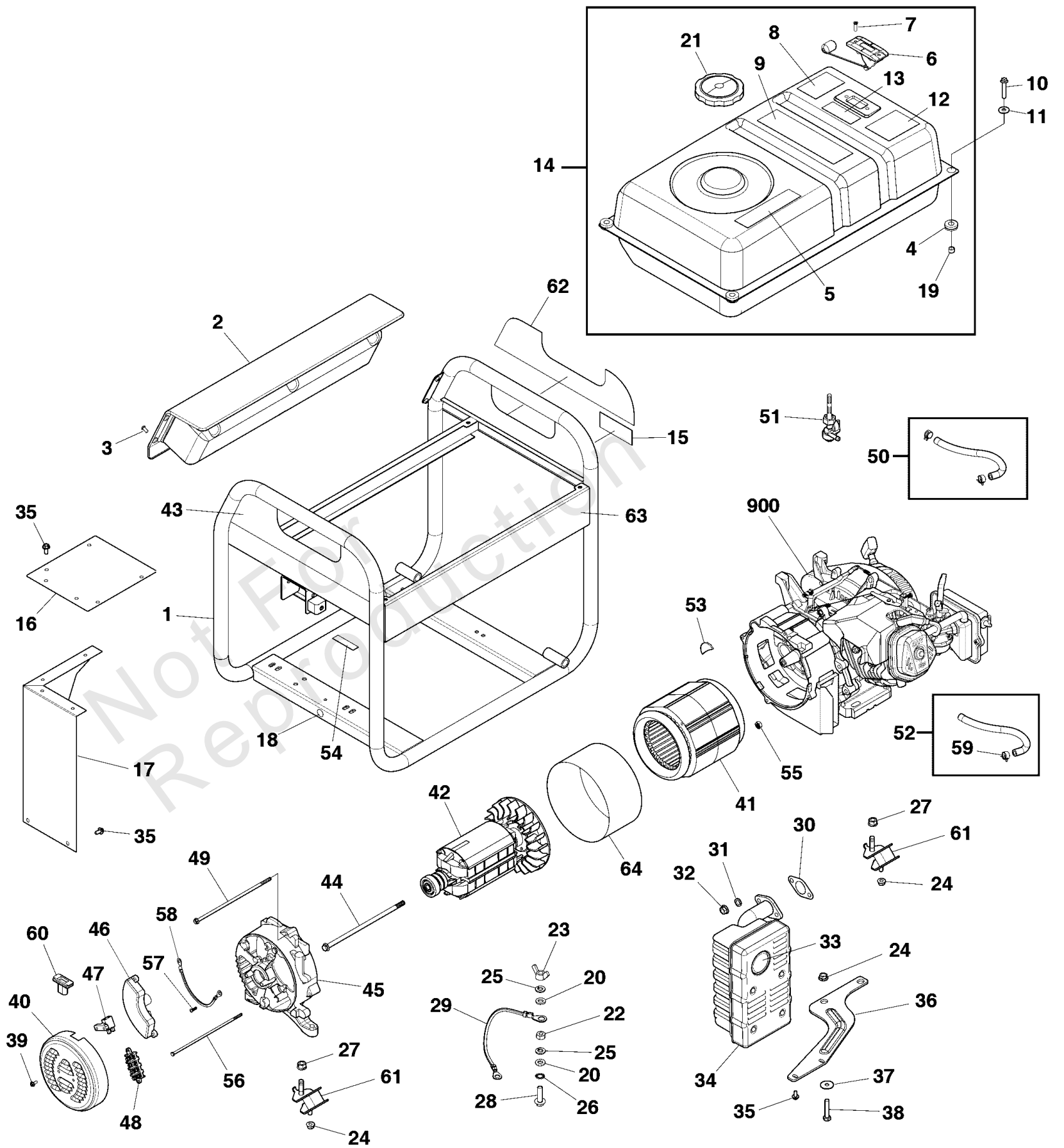
Control Panel

| REF NO | PART NO | QTY | DESCRIPTION |
|--------|----------|-----|---|
| 1 | 772210 | | PANEL-CONTROL -(Includes Item 13 & 14) |
| 2 | 772214 | | BOX-CONTROL-PANEL |
| 3 | 319477GS | | COVER-OUTLET |
| 4 | 319476GS | | COVER-OUTLET |
| 5 | 319459GS | | TRIM-EDGE |
| 6 | 191481GS | | BOOT, Breaker Circuit |
| 7 | 319540GS | | BREAKER-CIRCUIT |
| 8 | 43437GS | | OUTLET, 120/240V Locking, 30A |
| 9 | 709526 | | OUTLET-GFCI |
| 10 | 312636GS | | BOOT, Circuit Breaker |
| 11 | 209872GS | | BREAKER, Circuit, 20A |
| 12 | 319525GS | | SWITCH-ON/OFF |
| 13 | 772212 | | DECAL |
| 14 | 772216 | | DECAL |
| 15 | 319463GS | | BUTTON-SELECT |
| 16 | 318458GS | | POWER MONITOR |
| 17 | 319529GS | | GROMMET |
| 18 | 319530GS | | GROMMET |
| 19 | 772229 | | SCREW |
| 20 | 772215 | | WIRE-HARNESS-CO |
| 21 | 772217 | | LIGHT-CO |
| 22 | 772213 | | BRACKET-MODULE |
| 23 | 772211 | | MODULE-CO |

Main Unit

Note: Unless noted otherwise, use the standard torque specifications

Mfg. No: 030728-00



Main Unit

| REF NO | PART NO | QTY | DESCRIPTION |
|--------|----------|-----|--|
| 1 | 772226 | | CRADLE -(Includes Item 15, 18 & 63) |
| 2 | 772230 | | PANEL-CONTROL |
| 3 | 772229 | | SCREW |
| 4 | 189134GS | | GROMMET, Rubber |
| 5 | 772237 | | DECAL |
| 6 | 704183 | | GAUGE-FUEL |
| 7 | 314440GS | | SCREW |
| 8 | 202997GS | | DECAL, Warning, CO |
| 9 | 772233 | | DECAL |
| 10 | 703805 | | SCREW |
| 11 | 312005GS | | WASHER |
| 12 | 202997GS | | DECAL, Warning, CO |
| 13 | 703264 | | DECAL |
| 14 | 772227 | | TANK-FUEL |
| 15 | 772236 | | DECAL |
| 16 | 319456GS | | HEATSHIELD |
| 17 | 319455GS | | HEATSHIELD |
| 18 | 704331 | | DECAL |
| 19 | 189137GS | | SPACER |
| 20 | ----- | | WASHER, Flat M6 |
| 21 | 319587GS | | CAP-FUEL |
| 22 | ----- | | NUT, Hex, M6 |
| 23 | 87680GS | | NUT, M6 - 1.0 Wing |
| 24 | ----- | | * NUT, Flange Lock, M8 |
| 25 | ----- | | * WASHER, Lock, M6 |
| 26 | ----- | | * WASHER, Shakeproof, Ext M6 |
| 27 | ----- | | * NUT, Flange Lock, M10 |
| 28 | ----- | | HHCS, M6 - 1.0 x 25 |
| 29 | 706165 | | WIRE |
| 30 | 813085GS | | GASKET |
| 31 | ----- | | * WASHER, Lock, M8 |
| 32 | ----- | | * NUT, Hex, M8-1.25 |
| 33 | 83083GS | | SCREEN, Spark Arrest |
| 34 | 192569GS | | MUFFLER |
| 35 | 706152 | | SCREW, M6 x 12 |
| 36 | 319457GS | | BRACKET, Muffler |
| 37 | ----- | | * WASHER, Flat M8 |
| 38 | 57821GS | | CAPSCREW, Hex Head, M8-1.25 x 40 |
| 39 | 312909GS | | SCREW |
| 40 | 312870GS | | COVER, Rear Bearing |
| 41 | 706903 | | STATOR |
| 42 | 706902 | | ROTOR |
| 43 | 772232 | | DECAL |
| 44 | 703910 | | BOLT |
| 45 | 312866GS | | SUPPORT, Bearing |
| 46 | 312871GS | | REGULATOR-VOLTAGE |
| 47 | 312904GS | | BRUSH ASSEMBLY |

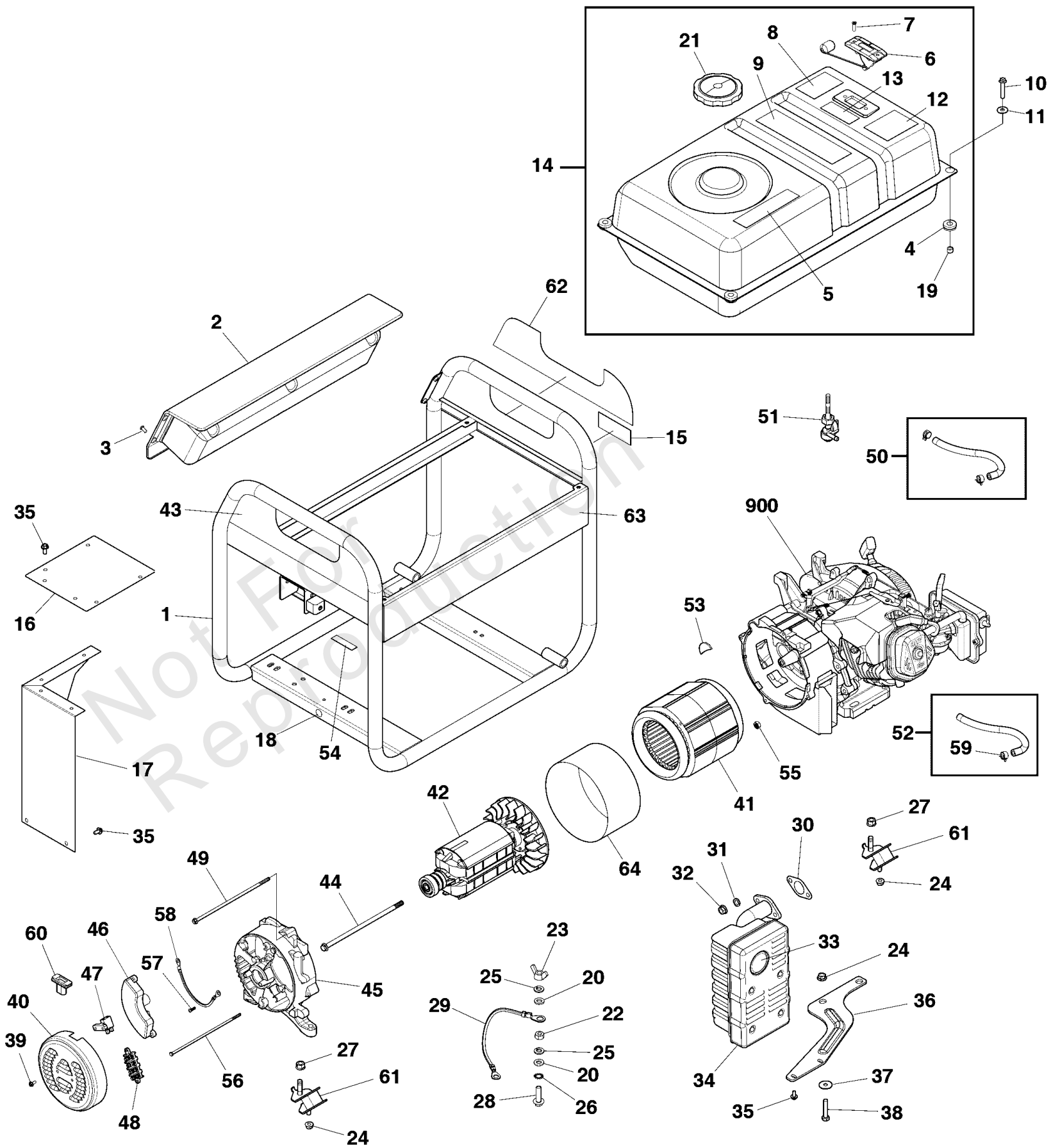
Footnotes:

(Note:* Verify your specific engine model, reference the ID Tag located on your engine.) (Refer to your local Briggs & Stratton distributor for parts and service.)
* Items without part numbers are common fasteners and are available at your local hardware store.

Main Unit

Note: Unless noted otherwise, use the standard torque specifications

Mfg. No: 030728-00



Main Unit

| REF NO | PART NO | QTY | DESCRIPTION |
|--------|----------------|-----|--|
| 48 | 312921GS | | BLOCK, Junction |
| 49 | 703909 | | BOLT |
| 50 | 791745 | | KIT-FUEL, Hose (Cut To Fit) -(Cut to Fit) |
| 51 | 209417GS | | VALVE, Fuel |
| 52 | 315017GS | | HOSE, Vapor (cut to fit) |
| 53 | 706376 | | COVER-RUBBER |
| 54 | 706535 | | PAD-RUBBER |
| 55 | 312916GS | | NUT |
| 56 | 703908 | | BOLT |
| 57 | 312911GS | | SCREW |
| 58 | 706150 | | WIRE |
| 59 | 314955GS | | CLAMP |
| 60 | 703013 | | COVER, Alternator, Rubber |
| 61 | 319451GS | | MOUNT-VIBRATION |
| 62 | 772228 | | DECAL |
| 63 | 772231 | | DECAL |
| 64 | 703911 | | BAND-STATOR |
| 900 | 25P132-0006-G1 | | ENGINE |
| -- | 771800 | | CORDSET -(Not Illustrated) |

Not For
Reproduction

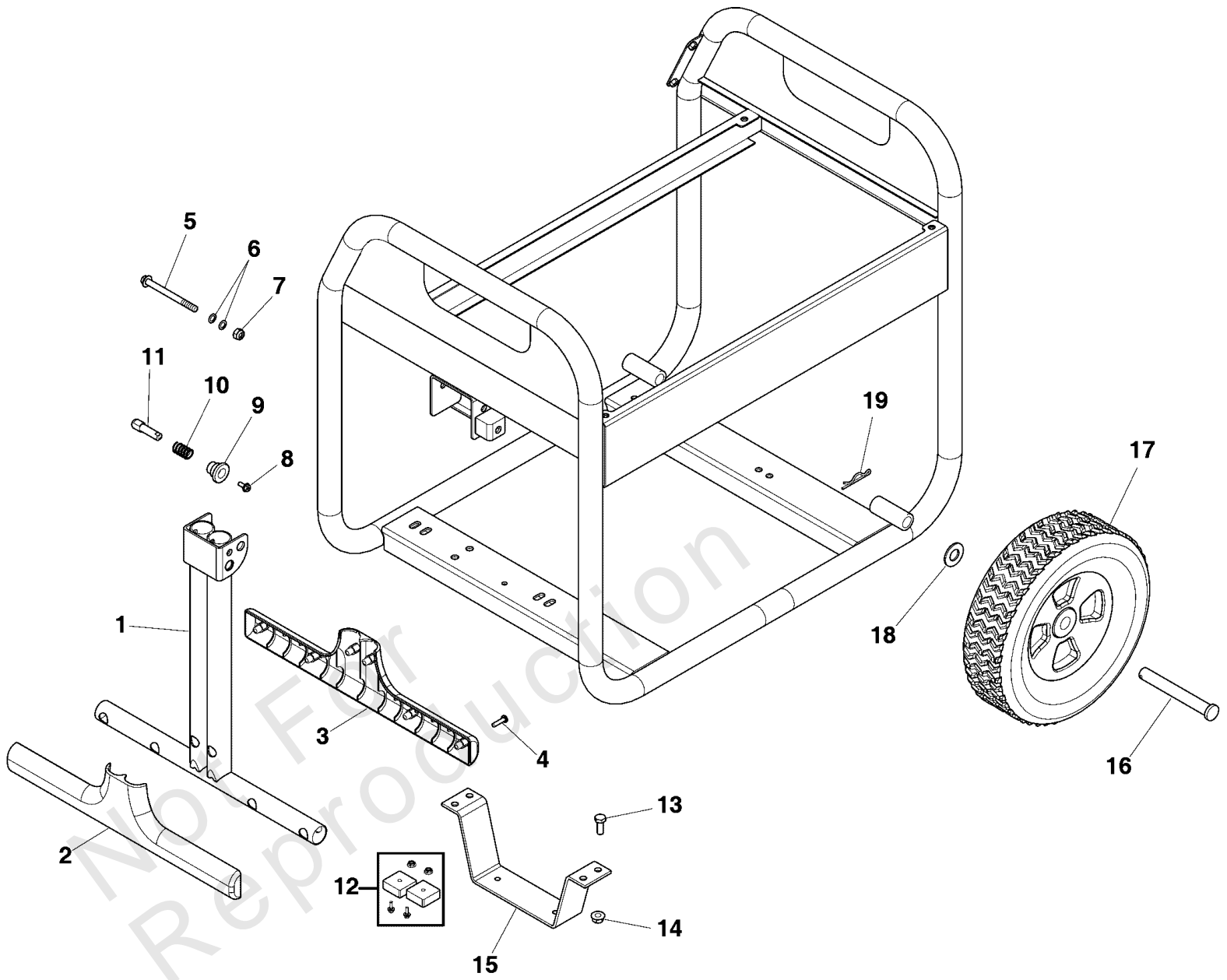
Footnotes:

(Note:* Verify your specific engine model, reference the ID Tag located on your engine.) (Refer to your local Briggs & Stratton distributor for parts and service.)
* Items without part numbers are common fasteners and are available at your local hardware store.

Wheel Kit (80005137)

Note: Unless noted otherwise, use the standard torque specifications

Mfg. No: 030728-00



Wheel Kit (80005137)

| REF NO | PART NO | QTY | DESCRIPTION |
|--------|----------|-----|-------------------------|
| 1 | 319396GS | 1 | HANDLE |
| 2 | 319360GS | 1 | GRIP-HANDLE |
| 3 | 319361GS | 1 | GRIP-HANDLE |
| 4 | 75477GS | 1 | PPHMS, M5 - 0.8 x 20 |
| 5 | 318677GS | 1 | BOLT |
| 6 | 96716GS | 1 | WASHER, Nylon |
| 7 | 49820GS | 1 | NUT, Nylok, M8 - 1.25 |
| 8 | 207825GS | 1 | BOLT-M5-6 x 16 |
| 9 | 319453GS | 1 | KNOB |
| 10 | 319452GS | 1 | SPRING |
| 11 | 319454GS | 1 | PIN |
| 12 | 319285GS | 1 | MOUNT-VIBRATION |
| 13 | 771804 | 1 | BOLT |
| 14 | 67989GS | 1 | NUT, M8 Flange Serrated |
| 15 | 319642GS | 1 | SUPPORT-LEG |
| 16 | 703813 | 1 | AXLE |
| 17 | 704145 | 1 | WHEEL |
| 18 | 22247GS | 1 | WASHER, Flat, 5/8" |
| 19 | 316510GS | 1 | PIN-HAIR |

Not For
Reproduction

Wiring Diagram

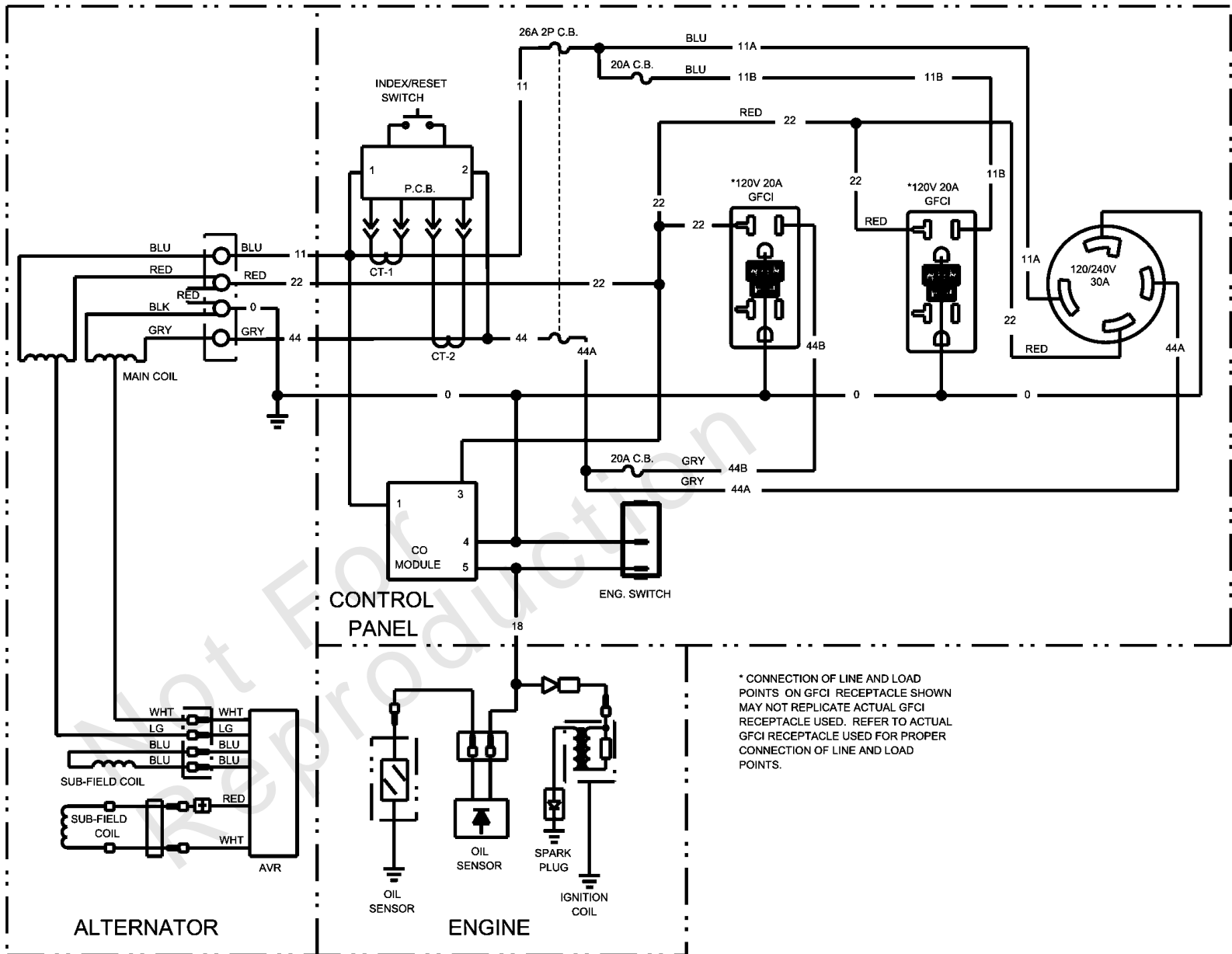
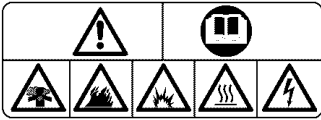
| REF NO | PART NO | QTY | DESCRIPTION |
|--------|---------|-----|---|
| -- | ---- | | Wiring Diagram Only |
| -- | WARNING | | Warning Generator Voltage Could Cause Electrical Shock or Burn Resulting in Death Or Serious Injury. To Avoid Electrical Shock Or Burn Hazard, Please Refer Service To Qualified Personnel. |

Not For
Reproduction

Wiring Schematic

Note: Unless noted otherwise, use the standard torque specifications

Mfg. No: 030728-00



Wiring Schematic

| REF NO | PART NO | QTY | DESCRIPTION |
|--------|---------|-----|---|
| -- | ---- | | Wiring Schematic Only |
| -- | WARNING | | Warning Generator Voltage Could Cause Electrical Shock or Burn Resulting in Death Or Serious Injury. To Avoid Electrical Shock Or Burn Hazard, Please Refer Service To Qualified Personnel. |

Not For
Reproduction

Hardware Identification & Torque Specifications

| Torque Specification Chart | | | | | | | | |
|--|-----------|------|-----------|------|------------|------|------------|------|
| FOR STANDARD METRIC MACHINE HARDWARE (Tolerance ± 20%) | | | | | | | | |
| Property Class | 5.6 | | 8.8 | | 10.9 | | 12.9 | |
| | Class 5.6 | | Class 8.8 | | Class 10.9 | | Class 12.9 | |
| Size Of Hardware | in/lbs | Nm. | in/lbs | Nm. | in/lbs | Nm. | in/lbs | Nm. |
| | ft/lbs | | ft/lbs | | ft/lbs | | ft/lbs | |
| M3 | 5.88 | .56 | 13.44 | 1.28 | 19.2 | 1.80 | 22.92 | 2.15 |
| M4 | 13.44 | 1.28 | 30.72 | 2.90 | 43.44 | 4.10 | 52.56 | 4.95 |
| M5 | 26.4 | 2.50 | 60.96 | 5.75 | 5.97 | 8.10 | 7.15 | 9.7 |
| M6 | 44.64 | 4.3 | 7.3 | 9.9 | 10.3 | 14 | 12.1 | 16.5 |
| M7 | 5.2 | 7.1 | 12.1 | 16.5 | 16.9 | 23 | 19.9 | 27 |
| M8 | 7.7 | 10.5 | 17.7 | 24 | 25 | 34 | 29 | 40 |
| M10 | 15 | 21 | 35 | 48 | 50 | 67 | 59 | 81 |
| M12 | 26 | 36 | 61 | 83 | 86.2 | 117 | 103 | 140 |
| M14 | 42 | 58 | 101 | 132 | 136 | 185 | 162 | 220 |
| M16 | 64 | 88 | 147 | 200 | 210 | 285 | 250 | 340 |
| M18 | 89 | 121 | 202 | 275 | 287 | 390 | 346 | 470 |
| M20 | 126 | 171 | 290 | 390 | 405 | 550 | 486 | 660 |
| M22 | 169 | 230 | 390 | 530 | 559 | 745 | 656 | 890 |
| M24 | 217 | 295 | 497 | 375 | 708 | 960 | 840 | 1140 |
| M27 | 320 | 435 | 733 | 995 | 1032 | 1400 | 1239 | 1680 |
| M30 | 435 | 590 | 995 | 1350 | 1401 | 1900 | 1681 | 2280 |
| M33 | 590 | 800 | 1349 | 1830 | 1902 | 2580 | 2278 | 3090 |
| M36 | 759 | 1030 | 1740 | 2360 | 2441 | 3310 | 2935 | 3980 |
| M39 | 988 | 1340 | 2249 | 3050 | 3163 | 4290 | 3798 | 5150 |

| Torque Specification Chart | | | | | | |
|---|-------------|-------|-------------|-------|-------------|---------|
| FOR STANDARD MACHINE HARDWARE (Tolerance ± 20%) | | | | | | |
| Hardware Grade | No Marks | | SAE Grade 5 | | SAE Grade 8 | |
| | SAE Grade 2 | | SAE Grade 5 | | SAE Grade 8 | |
| Size Of Hardware | in/lbs | Nm. | in/lbs | Nm. | in/lbs | Nm. |
| | ft/lbs | | ft/lbs | | ft/lbs | |
| 8-32 | 19 | 2.1 | 30 | 3.4 | 41 | 4.6 |
| 8-36 | 20 | 2.3 | 31 | 3.5 | 43 | 4.9 |
| 10-24 | 27 | 3.1 | 43 | 4.9 | 60 | 6.8 |
| 10-32 | 31 | 3.5 | 49 | 5.5 | 68 | 7.7 |
| 1/4-20 | 66 | 7.6 | 8 | 10.9 | 12 | 16.3 |
| 1/4-28 | 76 | 8.6 | 10 | 13.6 | 14 | 19.0 |
| 5/16-18 | 11 | 15.0 | 17 | 23.1 | 25 | 34.0 |
| 5/16-24 | 12 | 16.3 | 19 | 25.8 | 29 | 34.0 |
| 3/8-16 | 20 | 27.2 | 30 | 40.8 | 45 | 61.2 |
| 3/8-24 | 23 | 31.3 | 35 | 47.6 | 50 | 68.0 |
| 7/16-14 | 30 | 40.8 | 50 | 68.0 | 70 | 95.2 |
| 7/16-20 | 35 | 47.6 | 55 | 74.8 | 80 | 108.8 |
| 1/2-13 | 50 | 68.0 | 75 | 102.0 | 110 | 149.6 |
| 1/2-20 | 55 | 74.8 | 90 | 122.4 | 120 | 163.2 |
| 9/16-12 | 65 | 88.4 | 110 | 149.6 | 150 | 204.0 |
| 9/16-18 | 75 | 102.0 | 120 | 163.2 | 170 | 231.2 |
| 5/8-11 | 90 | 122.4 | 150 | 204.0 | 220 | 299.2 |
| 5/8-18 | 100 | 136 | 180 | 244.8 | 240 | 326.4 |
| 3/4-10 | 160 | 217.6 | 260 | 353.6 | 386 | 525.0 |
| 3/4-16 | 180 | 244.8 | 300 | 408.0 | 420 | 571.2 |
| 7/8-9 | 140 | 190.4 | 400 | 544.0 | 600 | 816.0 |
| 7/8-14 | 155 | 210.8 | 440 | 598.4 | 660 | 897.6 |
| 1-8 | 220 | 299.2 | 580 | 788.8 | 900 | 1,244.0 |
| 1-12 | 240 | 326.4 | 640 | 870.4 | 1,000 | 1,360.0 |

The guides and ruler furnished below are designed to help you select the appropriate hardware.



Nut, M8

Thread Diameter (mm)

Inside Diameter (in) Threads per inch

Nut, 1/2-16



Screw, M8- 1.25 x 25

Thread Diameter (mm) Distance between threads (mm) Body Length (mm)

Body Diameter Threads per inch Body Length (in)

Screw, 1/2- 16 x 2



Standard Hardware Sizing

When a washer or nut is identified as 1/2" (M8), this is the *Nominal size*, meaning the *inside diameter* is 1/2 inch (8mm metric thread diameter); if a second number is present it represents the *threads per inch* (distance between threads).

When bolt or capscrew is identified as 1/2 - 16 x 2" (M8 - 1.25 x 50), this means the *Nominal size*, or body diameter is 1/2 inch (8mm metric thread diameter), the second number, 16, represents the *threads per inch*, (*distance between threads*). The final number is the body length of the bolt or screw, 2 inches (50mm).

NOTES

- These torque values are to be used for all hardware excluding: locknuts, self-tapping screws, thread forming screws, sheet metal screws and socket head setscrews.
- Recommended seating torque values for locknuts:
 - for prevailing torque locknuts - use 65% of grade 5 torques.
 - for flange whizlock nuts and screws - use 135% of grade 5 torques.
- Unless otherwise noted on assembly drawings, all torque values must meet this specification.

Common Hardware Types

Hex Head Capscrew



Washer



Carriage Bolt



Hex Nut

Wrench & Fastener Size Guide

| | | | | |
|----------------------------------|----------------------------------|----------------------------------|--|---------------------------------|
| | | | | |
| 1/4" Bolt or Nut Wrench—7/16" | 5/16" Bolt or Nut Wrench—1/2" | 3/8" Bolt or Nut Wrench—9/16" | 7/16" Bolt or Nut Wrench (Bolt)—5/8" Wrench (Nut)—11/16" | 1/2" Bolt or Nut Wrench—3/4" |
| M6 Bolt or Nut Wrench—10mm | M8 Bolt or Nut Wrench—13mm | M10 Bolt or Nut Wrench—17mm | M12 Bolt or Nut Wrench—19mm | M14 Bolt or Nut Wrench—22mm |

