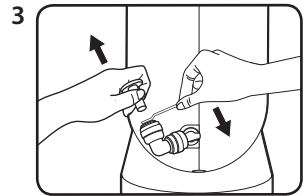
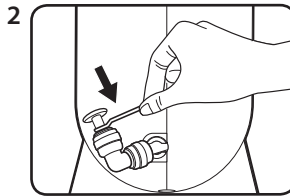
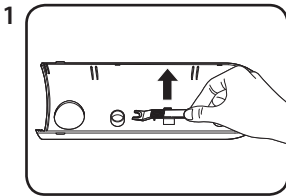


READ ME BEFORE YOU INSTALL THIS PRODUCT

The following instructions describe how to remove the gray plug from the elbow joint that is connected at the back of your Cypress water filtration unit.

1. Remove the Quick Connect tool from the underside of the Top Cover
2. Between the elbow and the grey plug is a thin ring or lip. Using the Quick Connect tool, push down on the ring toward the elbow
3. At the same time, pull the grey plug out in the opposite direction.

NOTE: Use this technique when changing the filters as well.



READ ME BEFORE YOU INSTALL THIS PRODUCT

The following instructions describe how to remove the gray plug from the elbow joint that is connected at the back of your Cypress water filtration unit.

1. Remove the Quick Connect tool from the underside of the Top Cover
2. Between the elbow and the grey plug is a thin ring or lip. Using the Quick Connect tool, push down on the ring toward the elbow
3. At the same time, pull the grey plug out in the opposite direction.

NOTE: Use this technique when changing the filters as well.

