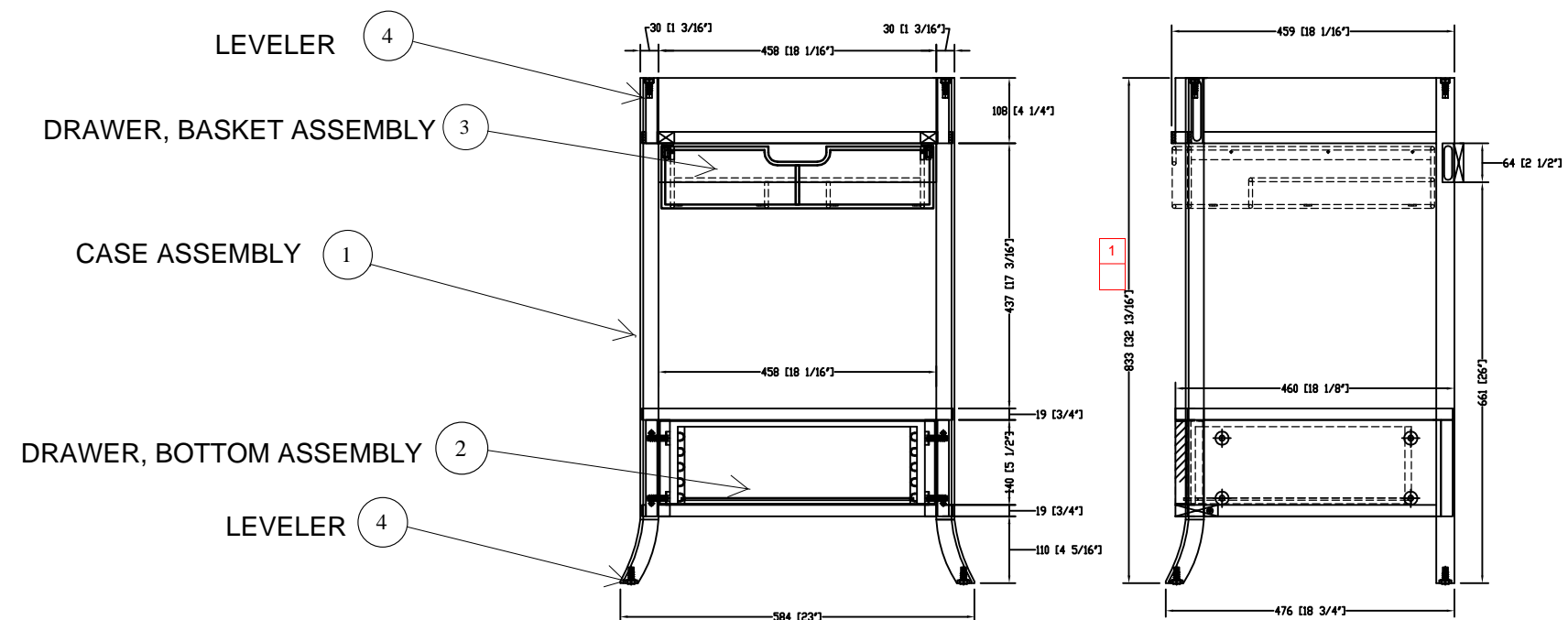


1057018  
Assembly drawing



NOTES:

1. SEE PAGE 2 FOR DETAILED REQUIREMENTS
2. THERE ARE 5 CUSTOMER REQUIREMENTS
3. ALL DIMENSIONS CALLED OUT ARE "REFERENCE" OTHER THAN CUSTOMER REQUIREMENTS
4. F2 - BLACK FOREST MATCH COLOR BOARD

APPLICABLE STANDARDS:

1. ANSI/KCMA A161.1 (APPLICABLE TESTS)
2. H100\_001 STANDARDS FOR WOOD FURNITURE
3. H100\_012 CHARACTERISTICS FOR WOOD VANITIES
4. E110\_019 MOTTLED WHITE LINER BOARD PERF. REQ.
5. E110\_020 CORRUGATED FIBER BOARD BURST PERF. REQ.
6. ISTA-1A PACKAGED STANDARD

Mandarin furniture(shenzhen)co.,ltd.	Customer Kohler	Description K-2449	Scale 1:5	Approved By:	Check By:	Draw By: JJJ	Draw Date 06.07.28	Rev. Date 06.10.02	Drawing No. 6-01
--------------------------------------	-----------------	--------------------	-----------	--------------	-----------	--------------	--------------------	--------------------	------------------

ALL DIMENSIONS IN: INCHES				
REV	DESCRIPTION	BY	DATE	DESCRIPTION
1-3	-	SLT	10.09.06	RELEASE - PCI #P0605712
DWG REVISION RECORD				

DIMENSIONING AND TOLERANCING PER ASME Y14.5M-1994				
APPROVED SCOTT KREBS		DATE 10.10.06	PLOT DATE 10.10.06	SCALE NONE
DRAWN S. TILDEN	DATE 10.09.06	CHECKED	DATE	DWG B
DO NOT SCALE DRAWING			MANUAL PDF	SIZE
<b>KOHLER</b>			THIRD ANGLE PROJECTION	
KOHLER CO. KOHLER, WISCONSIN 53044				
DESCRIPTION		PART NAME MODEL NAME		
<b>ASSEMBLY DRAWING</b>				
DWG. NO. 1057018				SHT 1 of 3

TOLERANCES UNLESS OTHERWISE SPECIFIED
.XXX ± 0.010
.XX ± 0.20
.X ± 0.1
ANG ± 3.0

THIS DRAWING IN DESIGN AND DETAILS IS THE PROPERTY OF KOHLER CO. AND MAY NOT BE USED EXCEPT IN CONNECTION WITH KOHLER CO. WORK. ALL RIGHTS OF DESIGN OR INVENTION ARE RESERVED.

**GENERAL SPECIFICATIONS:**

**TOLERANCE:** Overall dimension tolerance is +/- .125 unless otherwise specified

Overall:

- Species will be specified per design
- All solid wood to meet AWI/AWMAC QSI Grade 1 Standards with moisture content ranging from 8-10% China
- All veneered panels to feature moisture resistant MDF core or Veneer core Plywood
- All solid wood and veneer components are to be plain sawn unless otherwise noted
- All veneers to meet AWI/AWMAC QSI grade AA standards on exposed surfaces
- All products to be manufactured to AWI/AWMAC Custom Grade or better
- Surface Criteria will be called out per each Design
- Grain direction will be called out per each design

Case

- All face frames to be 3/4" Thick Glued and pocket screwed or better
- All cabinet sides to have joinery flush with the face frame, unless noted
- All cabinet floors to be captive and have a minimum thickness of 5/8"
- All cabinets to have 1/8" back or better

Drawers

- All drawers to be made from solid wood 1/2" thick or greater
- Exposed Dovetail joinery
- Minimum 3/16" captive bottom

Packaging:

- Each piece of furniture is packed in a corrugated cardboard box
- All product will be wrapped in a protective foam material or equivalent material
- All Product will have formed protective corners or equivalent where applicable
- All sub component will be wrapped with protective foam or equivalent and stabilized with in the outside pack
- All product shipped on a Skid

**SURFACE CALLOUTS**

- "A" SURFACE ALL OUTSIDE OF CABINET
- "B" SURFACE ALL INSIDE OF CABINET
- "C" SURFACE BACK OF CABINET
- "D" SURFACE BOTTOM OF CABINET

**SPECIFIC SPECIFICATIONS:**

Overall:

- Raw material solids: Birch (plane cut)
- Raw material veneer Birch (plane cut)
- Core of veneer: MDF (Moisture resistant)
- Glue and screw components where applicable
- No exposed fastener on exposed surfaces

Finish(top coat):

- "PU" Catalyzed Finish (top coat)
- Top coat Sheen 35+/5°
- Color: approved off a color range board (F2)
- Surface appearance: approved off a control board

Decorative hardware:

Knobs and mounting screws included (NOTE: No holes drilled in cabinet)

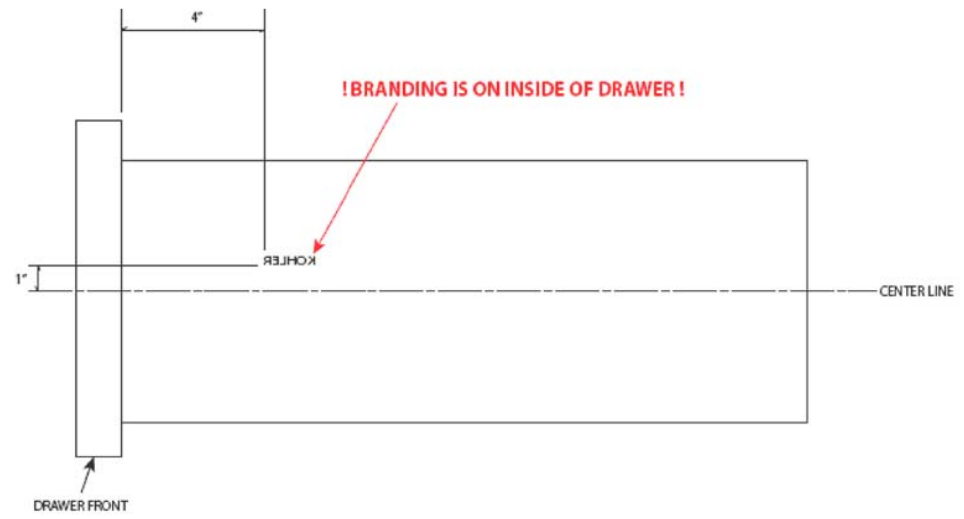
Mechanical Hardware

- Full Extension - Local Brand - Bottom Drawer
- 3/4" extension epoxy slide - Basket Drawer
- Drawer Slides, (Black)

ALL DIMENSIONS IN: INCHES					DIMENSIONING AND TOLERANCING PER ASME Y14.5M-1994					
<div style="border: 1px solid black; width: 100%; height: 100%; position: relative;"> <div style="position: absolute; top: 50%; left: 50%; transform: translate(-50%, -50%); font-size: 2em;">SEE SHEET #1</div> </div>					TOLERANCES UNLESS OTHERWISE SPECIFIED  .XXX ± 0.010 .XX ± 0.20 .X ± 0.1 ANG ± 3.0	APPROVED	DATE	PLOT DATE	SCALE	
						SCOTT KREBS		10.10.06	10.10.06	NONE
						DRAWN	DATE	CHECKED	DATE	DWG
						S. TILDEN	10.09.06			<b>B</b>
						DO NOT SCALE DRAWING			MANUAL PDF	SIZE
						<div style="font-size: 1.5em; font-weight: bold;">KOHLER</div> KOHLER CO. KOHLER, WISCONSIN 53044			THIRD ANGLE PROJECTION	
						DESCRIPTION			PART NAME	MODEL NAME
						ASSEMBLY DRAWING				
						DWG. NO.	1057018			SHT
				2 of 3						
DWG REVISION RECORD										
SHT	SYM	BY	DESCRIPTION	DATE						

THIS DRAWING IN DESIGN AND DETAILS IS THE PROPERTY OF KOHLER CO. AND MAY NOT BE USED EXCEPT IN CONNECTION WITH KOHLER CO. WORK. ALL RIGHTS OF DESIGN OR INVENTION ARE RESERVED.

# KOHLER brand location and size



KOHLER

**IDA#335 C**  
0.75"w x 0.11"h

Mandarin furniture(shenzhen)co,ltd.	Customer Kohler	Description K-2449	Scale 1:5	Approved By:	Check By:	Draw By: JJJ	Draw Date 06.07.28	Rev. Date	Drawing No. 6-06
-------------------------------------	-----------------	--------------------	-----------	--------------	-----------	--------------	--------------------	-----------	------------------

ALL DIMENSIONS IN: INCHES				
SHT	SYM	BY	DESCRIPTION	DATE
1-3	-			
SEE SHEET #1				
SHT	SYM	BY	DESCRIPTION	DATE
DWG REVISION RECORD				

DIMENSIONING AND TOLERANCING PER ASME Y14.5M-1994				
APPROVED <b>SCOTT KREBS</b>		DATE 10.10.06	PLOT DATE 10.10.06	SCALE <b>NONE</b>
DRAWN <b>S. TILDEN</b>	DATE 10.09.06	CHECKED	DATE	DWG <b>B</b>
DO NOT SCALE DRAWING			MANUAL PDF	SIZE
<b>KOHLER</b>			THIRD ANGLE PROJECTION	
KOHLER CO. KOHLER, WISCONSIN 53044				
DESCRIPTION			PART NAME	MODEL NAME
<b>ASSEMBLY DRAWING</b>				
DWG. NO.		<b>1057018</b>		SHT 3 of 3

TOLERANCES UNLESS OTHERWISE SPECIFIED  
 .XXX ± 0.010  
 .XX ± 0.20  
 .X ± 0.1  
 ANG ± 3.0

THIS DRAWING IN DESIGN AND DETAILS IS THE PROPERTY OF KOHLER CO. AND MAY NOT BE USED EXCEPT IN CONNECTION WITH KOHLER CO. WORK. ALL RIGHTS OF DESIGN OR INVENTION ARE RESERVED.