

## Safety Information

# IMPORTANT SAFETY INSTRUCTIONS

When using electrical products, basic precautions should always be followed, including the following:

- a. **READ AND FOLLOW ALL SAFETY INSTRUCTIONS.**
- b. Do not use seasonal products outdoors unless marked suitable for indoor and outdoor use. When products are used in outdoor applications, connect the product to a Ground Fault Circuit Interrupting (GFCI) outlet. If one is not provided, contact a qualified electrician for proper installation.
- c. This seasonal product is not intended for permanent installation or use.
- d. Do not mount or place the product near gas or electric heaters, fireplaces, candles, or other similar sources of heat.
- e. Do not secure the wiring of the product with staples or nails, or place on sharp hooks or nails.
- f. Do not let lamps rest on the supply cord or on any wire.
- g. Unplug the product when leaving the house, when retiring for the night, or if left unattended.
- h. This is an electric product and not a toy! To avoid risk of fire, burns, personal injury and electric shock it should not be played with or placed where small children can reach it.
- i. Do not use this product for other than its intended use.
- j. Do not hang ornaments or other objects from cord, wire, or light string.
- k. Do not close doors or windows on the product or extension cords, as this may damage the wire insulation.
- l. Do not cover the product with cloth, paper, or any material that is not a part of the product when in use.
- m. Read and follow all instructions that are on the product or provided with the product.
- n. Risk of fire. This product does not contain lamp shunts, which allow the product to operate if one lamp burns out. Lamps are non-replaceable..
- o. To reduce the risk of fire or electric shock, do not attempt to replace lamps or modify string.
- p. **SAVE THESE INSTRUCTIONS.**

## Pre-Assembly

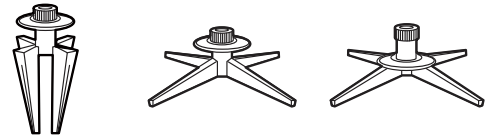
### Package Contents

Part	Description	Quantity
A	Tree top	1
B	Tree center, Sticker 2	1
C	Tree center, Sticker 1	1
D	Tree stand	1
E	Remote Controller	1

## Assembly

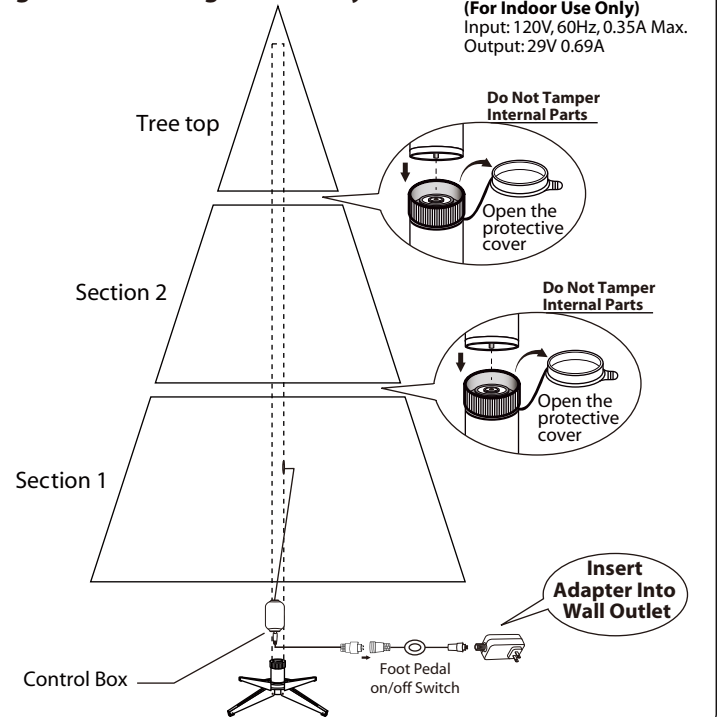
- Step 1.** Before you start to assemble your tree, choose an appropriate location near a wall outlet.
- Step 2.** Assemble the tree stand and place on a level surface. (See Fig. A)

Fig. A - Tree Stand Assembly



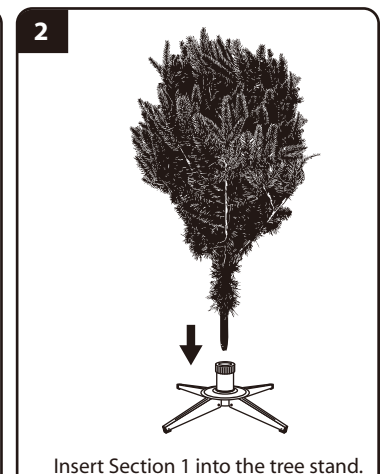
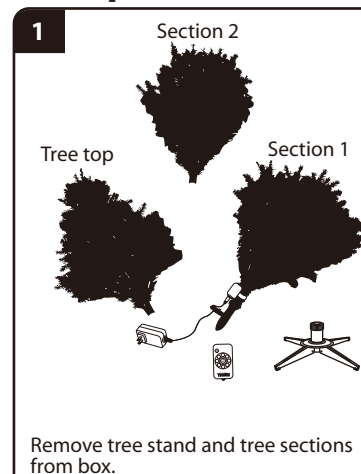
Unfold the legs and lay the stand in a flat area. Then slide the locking disc downward and snap into place.

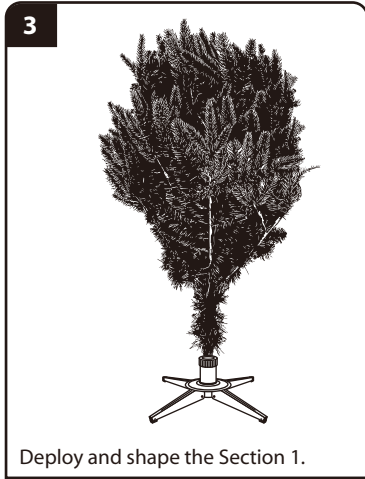
Fig. B - Tree and Light Assembly



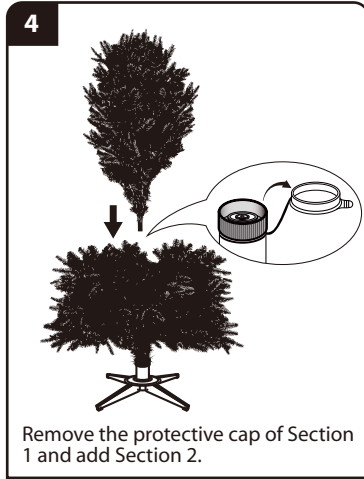
- Step 3.** Each tree section is numbered with a Sticker. Please identify all sections before assembling.
- Step 4.** Assemble the tree from bottom to the top. Start with the bottom section and remove the protective cap before inserting into the assembled stand. Make sure the pole is firmly inserted and secured into the stand.

## Set Up

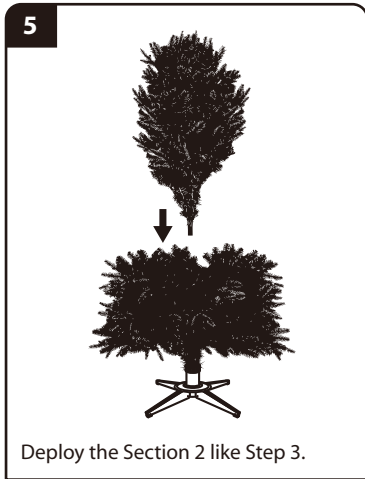




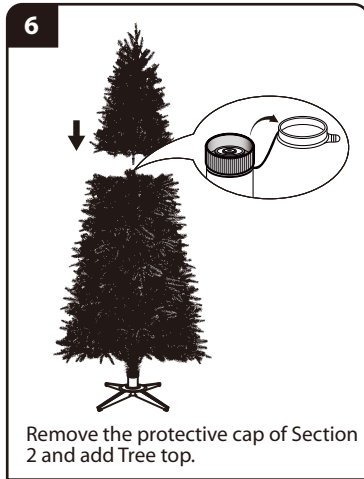
Deploy and shape the Section 1.



Remove the protective cap of Section 1 and add Section 2.



Deploy the Section 2 like Step 3.



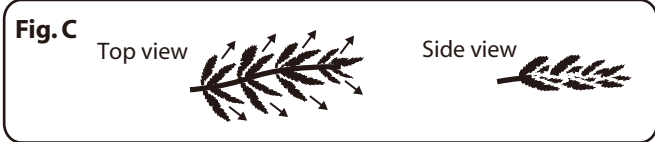
Remove the protective cap of Section 2 and add Tree top.

**Step 5.** Allow branches to fall into place or gently pull up and out. When adjusting branches, be sure that all wires pressing the foot switch button are free of branch hinges.

**Step 6.** plug the adapter into the wall outlet. Tread the button on Foot Pedal Switch then push power button on Remote Controller or control box. Your entire tree should now be lit. Select Color Selection Buttons or Modes Options on Remote Controller to change light show effects.

**Step 7.** A button on the Control Box can manually operate the light modes and color selections.

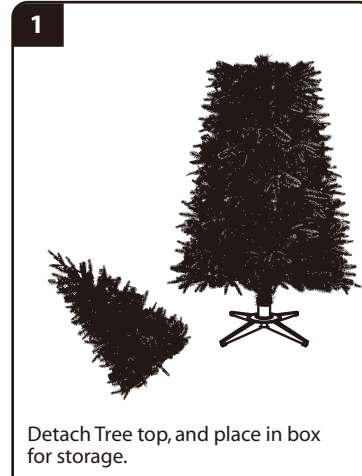
**Step 8.** Begin to shape the branches and tips, working from the bottom to the top. Start with tips farthest from the pole and fan out one to the right, one to the left, and one at the center of the main stem. **(See Fig. C)**



**Step 9.** After shaping the entire tree following the previous step, slightly upsweep all branch tips for a uniform look. Shift branches to fill any gaps. Your Christmas tree is now complete and ready to be decorated.

## Storage Instructions

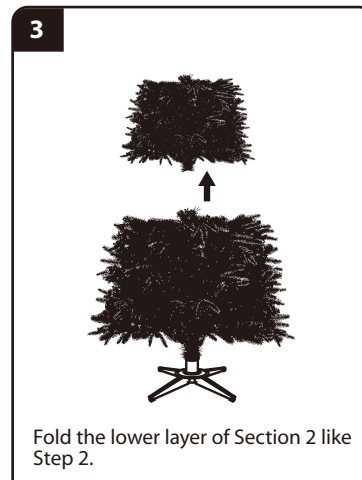
Unplug extension cord from the wall outlet first and then remove all ornaments and decorations.



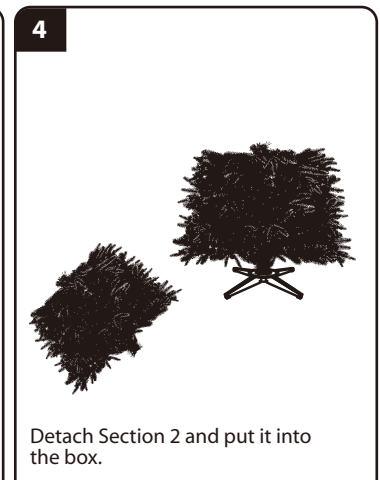
Detach Tree top, and place in box for storage.



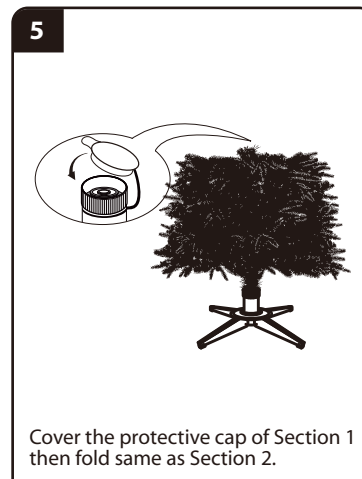
Cover the protective cap of the Section 2.



Fold the lower layer of Section 2 like Step 2.



Detach Section 2 and put it into the box.

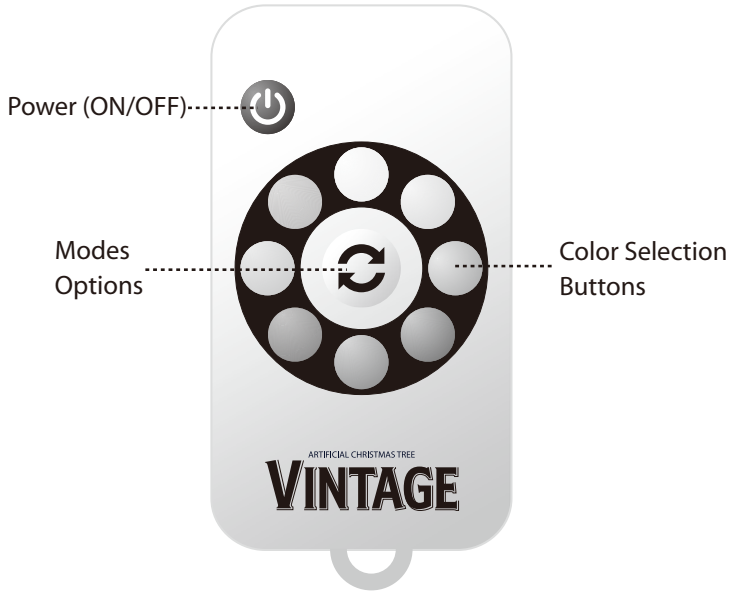


Cover the protective cap of Section 1 then fold same as Section 2.



Detach Section 1 from tree stand and pack it into the box. Fix the Remote Controller back onto power cord.

## Operation Instruction Of Remote Controller

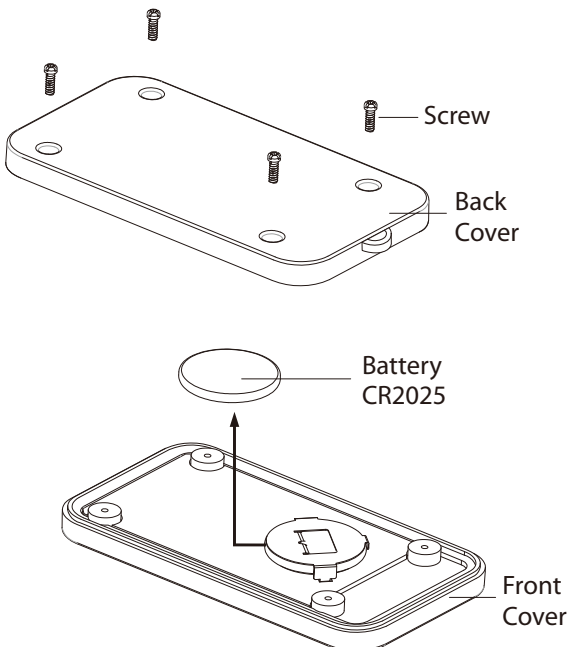


1. Press button to turn the lights ON/OFF.
2. Press color selection button for your preferred color.
3. Cycling Press button to get different light modes:
  - flash
  - strobe
  - fade
  - smooth

## Battery Replacement Of Remote Controller

1. Loos the screws and detach the back cover.
2. Push the battery, and take it out along with the arrow direction.
3. Install another new CR2025 battery.
4. Install the back cover and screws to front cover. Make sure the screws are all tightly fastened.
5. Test the function, and see if it works.

**NOTE:** Air-dry Remote Controller if it gets wet.



## Warning:

1. **WARNING:** SMALL PARTS, KEEP AWAY FROM CHILDREN.
2. Do not expose light set to moisture.
3. Remove batteries when not used for an extended period of time, or when depleted.
4. Dispose of used batteries properly by following directions on batteries.
5. Use only (CR2025) batteries for the remote controller.
6. Clean the battery contacts prior to battery installation.
7. **DO NOT DISPOSE OF BATTERIES IN FIRE. BATTERIES MAY EXPLODE OR LEAK.**

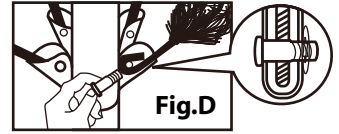
## Trouble Shooting Tips

### For Pre-lit Trees, If The Tree Does Not Illuminate

1. Please check to make sure that all plugs are properly connected and power cord is plugged into the wall outlet. (If the tree comes with a foot pedal, try stepping on the on/off button).
2. Turning the poles gently to make sure the pole to pole-to-pole connection is in place.
3. Check for loose connection between light string plugs and extension cords.
4. Manually operate the button on Control box to eliminate Remote Controller issues.

### Loose Hinge Pin

1. Extra hinge pins are included for repairing the hinges. Place the branch into the slot of the bracket.
2. Insert a new hinge pin through the hole and secure using the retainer washer. **(See Fig. D)**



**CAUTION:** Use only power adaptor that was provided with this product. Using a different power adaptor will damage the lights and cause fire and electrical shock hazard.

## Troubleshooting

Problem	Solution
The tree does not light	Ensure that all tree sections are plugged into each other and that the tree is plugged into the wall. If your tree came with a foot pedal, step on the On/Off button.