



# *Illustrated Parts List*

## *Portable Generator*



This generator is rated in accordance with CSA (Canadian Standards Association) standard C22.2 No. 100-94 (motor and generators).

Questions? Help is just a moment away!  
Preguntas? La ayuda es justa un momento lejos!

Call: Portable Generator Helpline

Llame: Línea Directa del Generador portátil - 1-800-732-2989 M-F 8-5 CST

### **Model / Modelo**

<b>Mfg. No.</b>	<b>Description / Descripción</b>
030555-00	7,500 Watt Briggs & Stratton

**Manual Part No.** 1756361

Revision A

Rev. Date: 3/6/2013

Not for  
Reproduction

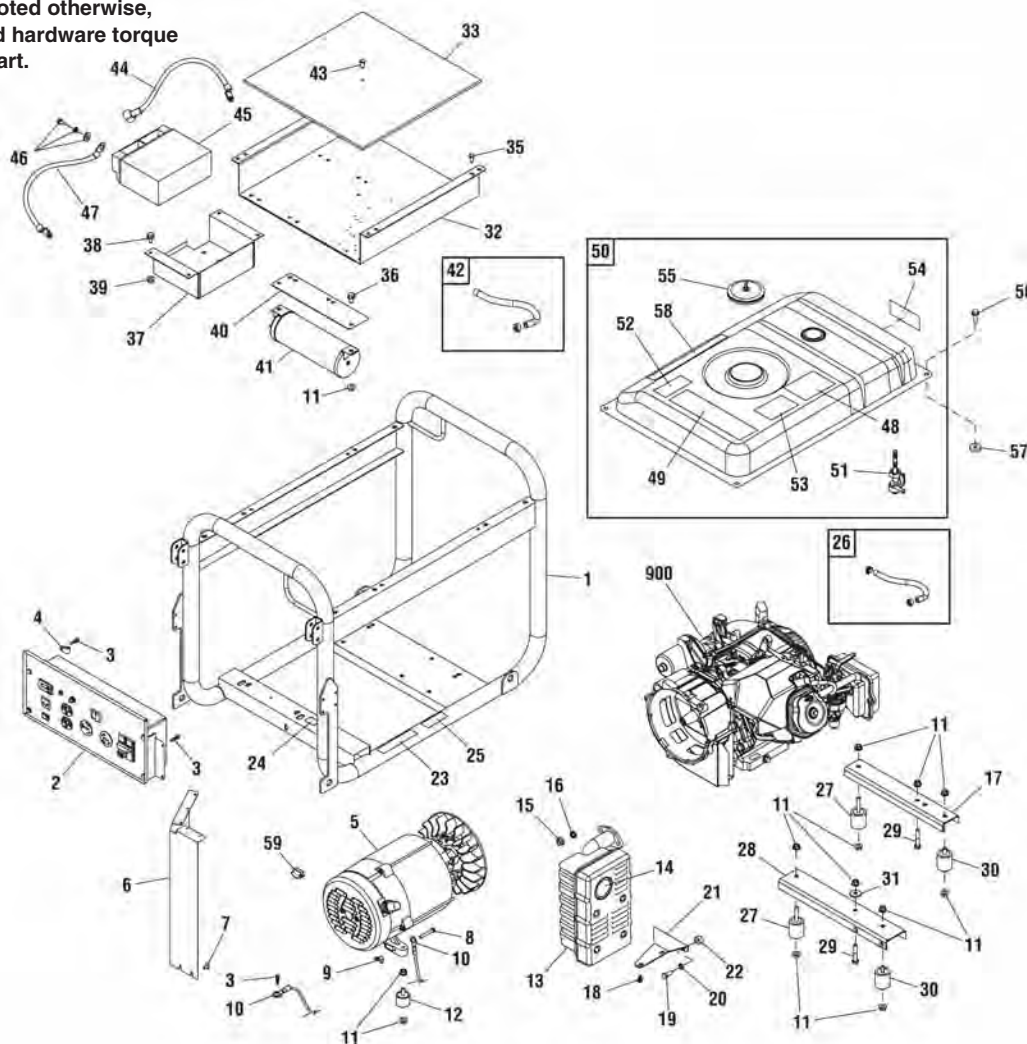
<b>PRODUCT COMPONENTS</b>	<b>PAGES</b>
Main Unit .....	4
Alternator .....	6
Control Panel .....	7
Wheel Kit .....	8
<b>Torque Specification Chart .....</b>	<b>Inside Back Cover</b>

Not for  
Reproduction

## Main Unit

318572

**NOTE:** Unless noted otherwise, use the standard hardware torque specification chart.



REF.	PART NO.	DESCRIPTION	REF.	PART NO.	DESCRIPTION
1	317777BXGS	CRADLE (Includes Ref. Nos. 23, 24 & 25)	18	66476GS	SCREW
2	318291GS	PANEL-CONTROL	19	-----	* CAPSCREW, Hex Head, 5/16-18 x 3/4
3	B2153GS	SCREW	20	-----	* WASHER, Lock, M8
4	315831GS	CLAMP	21	193048GS	BRACKET-MUFFLER
5	-----	ALTERNATOR	22	31579GS	SPACER
6	194390GS	HEATSHIELD	23	196830GS	DECAL
7	192376GS	SCREW	24	B4986GS	DECAL
8	-----	* CAPSCREW, Hex Head, M6-1 x 40	25	208538GS	DECAL
9	87680GS	NUT-WING	26	791745	KIT-FUEL HOSE (Cut to Fit)
10	14353621GS	WIRE	27	B5073GS	MOUNT-VIBRATION
11	67989GS	NUT	28	92731BXGS	BRACKET-SUPPORT
12	85652GS	MOUNT-VIBRATION	29	-----	* CAPSCREW, Hex Head, M8-1.25 x 45
13	192569GS	MUFFLER	30	B5072GS	MOUNT-VIBRATION
14	83083GS	SCREEN	31	50190GS	WASHER
15	-----	NUT, Hex, M8-1.25	32	318746GS	HEATSHIELD
16	-----	* WASHER, Lock, 3/8	33	92665GS	INSULATION
17	92531BXGS	BRACKET-SUPPORT			

### Footnotes

\* Items without part numbers are common fasteners and are available at your local hardware store.

\*\* Contact engine manufacturer for parts and service.

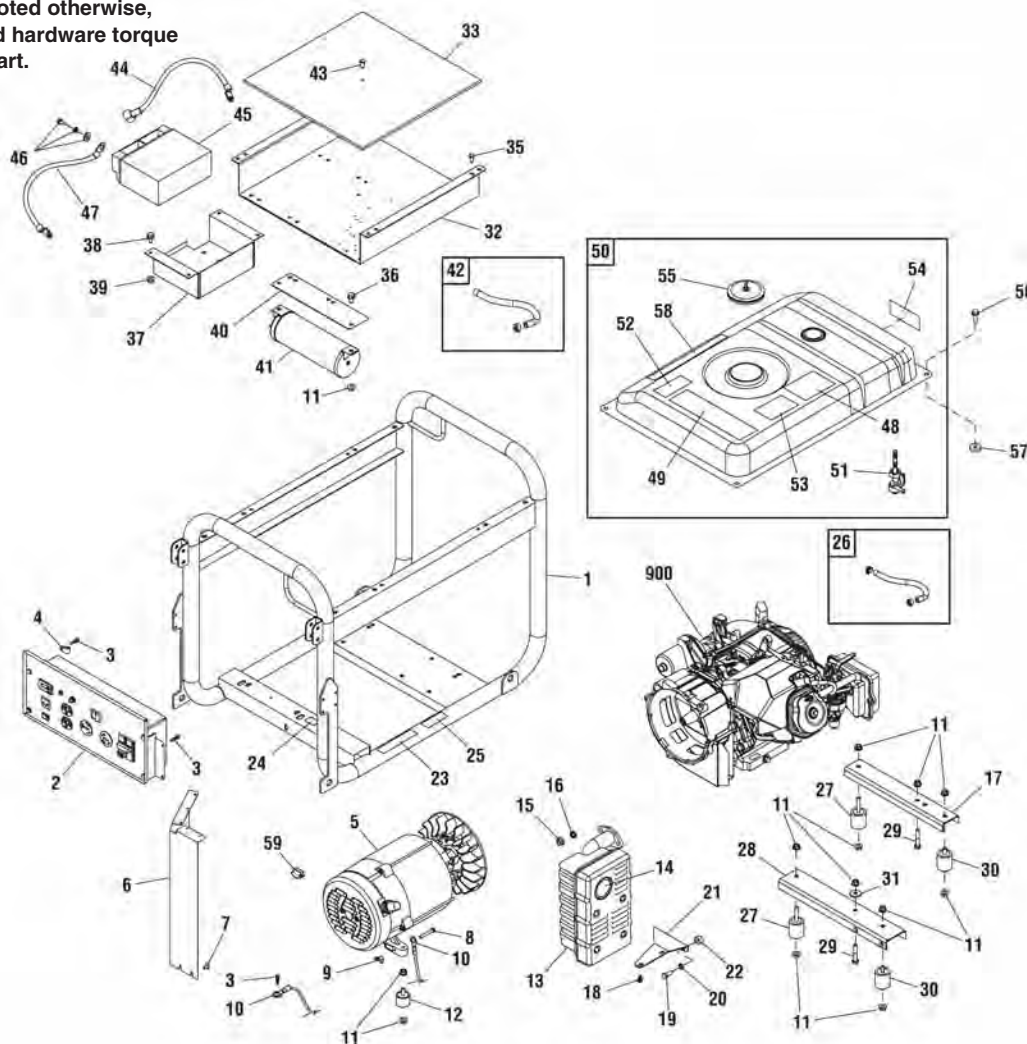
**The above parts group applies to the following Mfg. Nos.:**

030555-00 - 7,500 Watt Briggs & Stratton

## Main Unit

318572

**NOTE:** Unless noted otherwise, use the standard hardware torque specification chart.



REF.	PART NO.	DESCRIPTION	REF.	PART NO.	DESCRIPTION
35	B1797GS	CLIP-TREE	52	312728GS	DECAL
36	794821	SCREW	53	202997GS	DECAL
37	192985GS	TRAY, Battery	54	197797GS	DECAL
38	-----	* CAPSCREW, Hex Head, M6-1 x 12	55	314951GS	CAP, Fuel
39	-----	* NUT, Flange, M6	56	24490GS	SCREW
40	319144GS	BRACKET	57	193588GS	SPACER
41	318304GS	CANISTER-CARBON	58	703926	DECAL
42	315017GS	HOSE-VAPOR	59	703924	PLUG-ALT
43	85000GS	CLIP-INSULATION	900	-----	** ENGINE
44	189302RGS	CABLE-BTTRY, RED	--	BB3061BGS	OIL (Not Illustrated)
45	316345GS	BATTERY	--	43438GS	PLUG (Not Illustrated)
46	315546GS	KIT-HRDWR, BATTERY	--	65787GS	CHARGER-BATTERY (Not Illustrated)
47	185939ZGS	CABLE-BTTRY, BLK	--	37806GS	PLUG (Not Illustrated)
48	318517GS	DECAL			
49	194799GS	DECAL			
50	703803	TANK, Fuel			
51	310574GS	FUEL VALVE			

### Footnotes

\* Items without part numbers are common fasteners and are available at your local hardware store.

\*\* Contact engine manufacturer for parts and service.

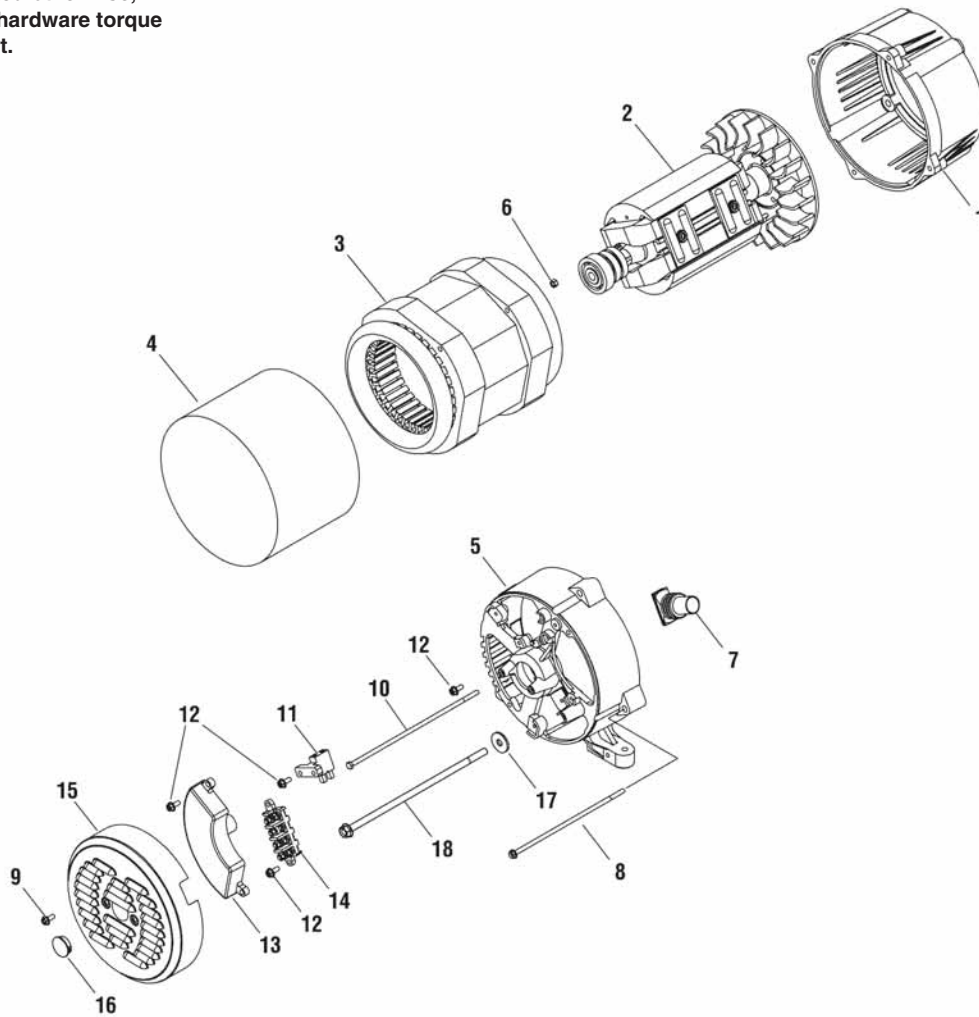
**The above parts group applies to the following Mfg. Nos.:**

030555-00 - 7,500 Watt Briggs & Stratton

# Alternator

318567

**NOTE:** Unless noted otherwise, use the standard hardware torque specification chart.



REF. PART NO.	DESCRIPTION	REF. PART NO.	DESCRIPTION
1	208537GS ADAPTER-ENGINE	18	207831GS BOLT
2	319368GS ROTOR		
3	319367GS STATOR		
4	207836GS BAND-STATOR		
5	208485GS SUPPORT-BEARING		
6	207878GS NUT		
7	207879GS BOOT		
8	207828GS BOLT		
9	207824GS BOLT		
10	207877GS BOLT		
11	207827GS BRUSH		
12	207825GS BOLT		
13	207840GS REGULATOR-VOLTAGE		
14	316945GS BLOCK-JUNCTION		
15	208429GS COVER		
16	315802GS CAP		
17	207826GS WASHER		

## Footnotes

**The above parts group applies to the following Mfg. Nos.:**

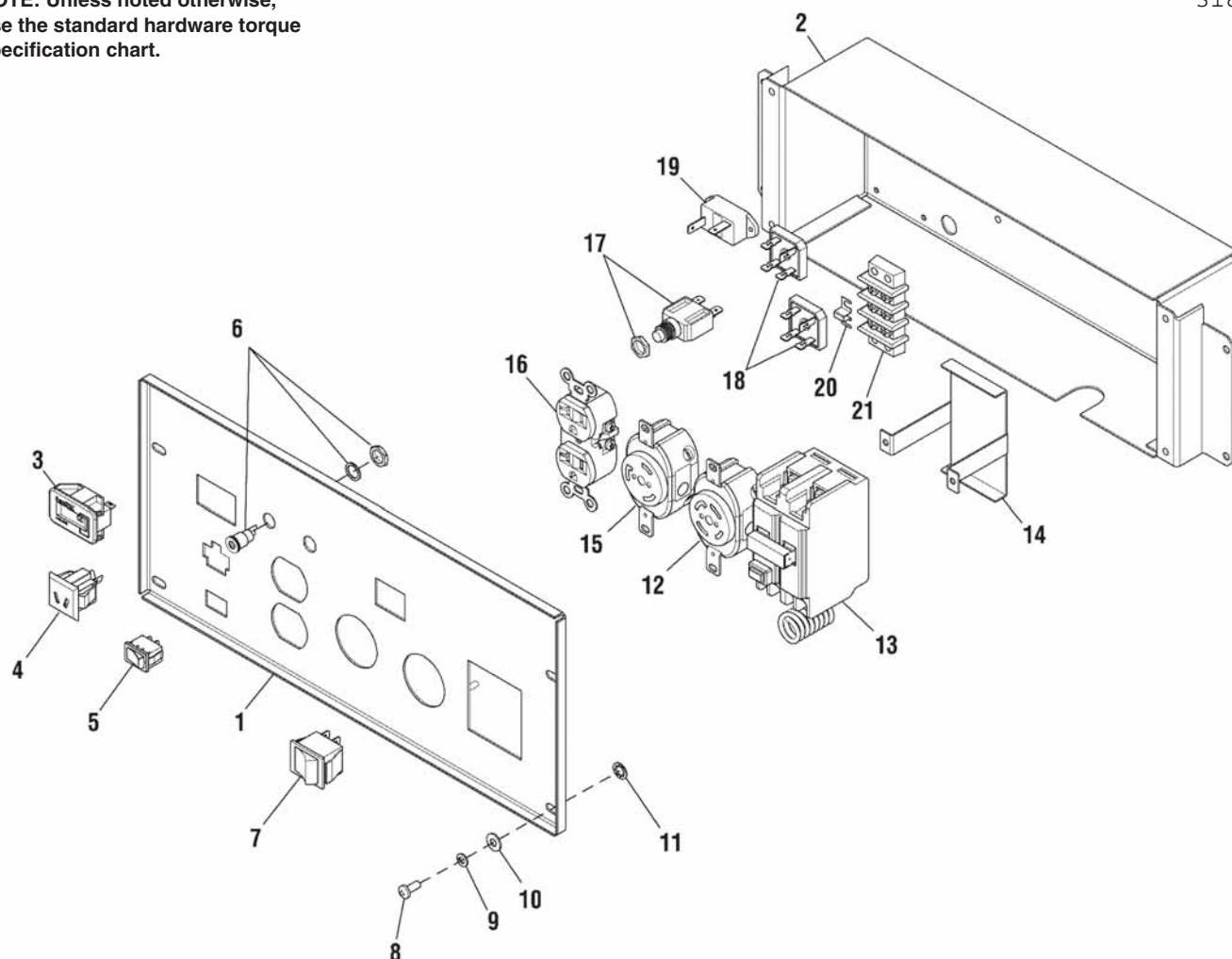
030555-00 - 7,500 Watt Briggs & Stratton



## Control Panel

318750

**NOTE:** Unless noted otherwise,  
use the standard hardware torque  
specification chart.



REF. PART NO.	DESCRIPTION	REF. PART NO.	DESCRIPTION		
1	318377GS	PANEL-CONTROL	18	B4894GS	RECTIFIER
2	318378GS	BOX-CONTROL	19	87962GS	CIRCUIT BREAKER
3	202602GS	HOUR METER	20	193095GS	JUMPER
4	90418GS	OUTLET	21	193077GS	TERMINAL STRIP
5	87799GS	SWITCH	--	318941GS	HARNESS-WIRE POWER
6	186168GS	JACK COAXIAL	--	318943GS	HARNESS-WIRE IGNITION
7	312684GS	SWITCH, ON/OFF			
8	-----	* SCREW, M5-0.8 x 12			
9	-----	* WASHER, Lock			
10	-----	* WASHER, Flat			
11	-----	* WASHER, Shakeproof			
12	43437GS	OUTLET			
13	192828DGS	CIRCUIT BREAKER			
14	192931GS	BRACKET			
15	68868GS	OUTLET			
16	68759GS	OUTLET			
17	202394GS	CIRCUIT BREAKER			

### Footnotes

\* Items without part numbers are common fasteners and are available at your local hardware store.

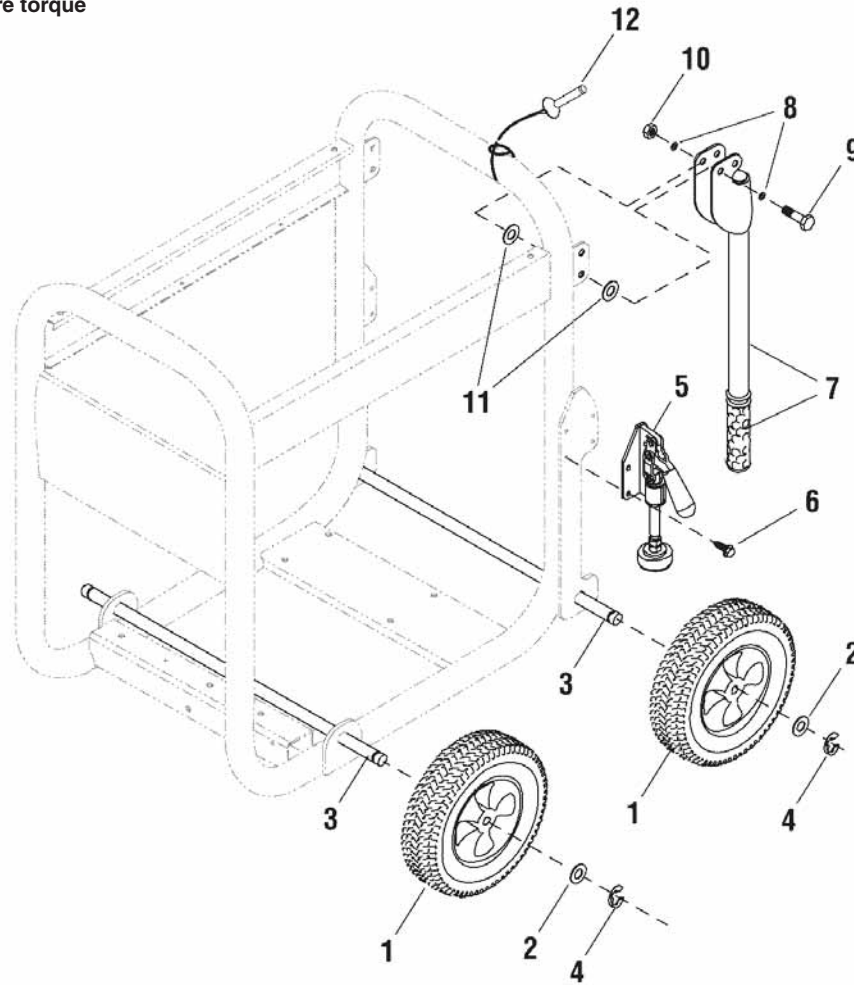
**The above parts group applies to the following Mfg. Nos.:**

030555-00 - 7,500 Watt Briggs & Stratton

## Wheel Kit

80004678

**NOTE:** Unless noted otherwise, use the standard hardware torque specification chart.



REF.	PART NO.	DESCRIPTION	REF.	PART NO.	DESCRIPTION
1	316406GS	WHEEL			
2	----	* WASHER, 5/8			
3	191267KGS	AXLE			
4	191265GS	E-RING			
5	205135GS	BRAKE			
6	----	* SCREW, 1/4-20 x 3/8			
7	B193200GS	HANDLE			
8	----	* WASHER, Flat, 5/16 - M8			
9	----	* NUT, Nylock, M8-1.25			
10	----	* CAPSCREW, Hex Head, M8-1.25 x 45			
11	----	* WASHER, Flat, Nylon			
12	B4135GS	PIN			
--	205183GS	KIT-HARDWARE, WHEEL (Includes Ref. Nos. 2, 4, 8, 10, 11 & 12)			

### Footnotes

\* Items without part numbers are common fasteners and are available at your local hardware store.

**The above parts group applies to the following Mfg. Nos.:**

030555-00 - 7,500 Watt Briggs & Stratton



Not for  
Reproduction

Not for  
Reproduction

# Hardware Identification & Torque Specifications

Torque Specification Chart								
FOR STANDARD METRIC MACHINE HARDWARE (Tolerance ± 20%)								
Property Class	5.6		8.8		10.9		12.9	
	Class 5.6		Class 8.8		Class 10.9		Class 12.9	
Size Of Hardware	in/lbs		in/lbs		in/lbs		in/lbs	
	ft/lbs	Nm.	ft/lbs	Nm.	ft/lbs	Nm.	ft/lbs	Nm.
M3	5.88	.56	13.44	1.28	19.2	1.80	22.92	2.15
M4	13.44	1.28	30.72	2.90	43.44	4.10	52.56	4.95
M5	26.4	2.50	60.96	5.75	5.97	8.10	7.15	9.7
M6	44.64	4.3	7.3	9.9	10.3	14	12.1	16.5
M7	5.2	7.1	12.1	16.5	16.9	23	19.9	27
M8	7.7	10.5	17.7	24	25	34	29	40
M10	15	21	35	48	50	67	59	81
M12	26	36	61	83	86.2	117	103	140
M14	42	58	101	132	136	185	162	220
M16	64	88	147	200	210	285	250	340
M18	89	121	202	275	287	390	346	470
M20	126	171	290	390	405	550	486	660
M22	169	230	390	530	559	745	656	890
M24	217	295	497	375	708	960	840	1140
M27	320	435	733	995	1032	1400	1239	1680
M30	435	590	995	1350	1401	1900	1681	2280
M33	590	800	1349	1830	1902	2580	2278	3090
M36	759	1030	1740	2360	2441	3310	2935	3980
M39	988	1340	2249	3050	3163	4290	3798	5150

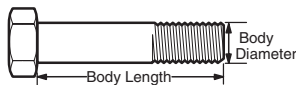
The guides and ruler furnished below are designed to help you select the appropriate hardware.



Nut, M8

Thread Diameter (mm)  
Inside Diameter (in)  
Threads per inch

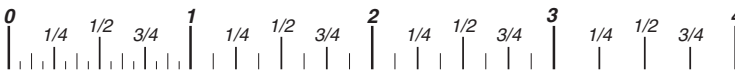
Nut, 1/2-16



Screw, M8- 1.25 x 25

Thread Diameter (mm)  
Body Diameter  
Distance between threads (mm)  
Threads per inch  
Body Length (mm)  
Body Length (in)

Screw, 1/2- 16 x 2



## Standard Hardware Sizing

When a washer or nut is identified as 1/2" (M8), this is the *Nominal size*, meaning the *inside diameter* is 1/2 inch (8mm metric thread diameter); if a second number is present it represents the *threads per inch* (distance between threads).

When bolt or capscrew is identified as 1/2 - 16 x 2" (M8 - 1.25 x 50), this means the *Nominal size*, or body diameter is 1/2 inch (8mm metric thread diameter), the second number, 16, represents the *threads per inch*, (1.25 thread diameter). The final number is the body length of the bolt or screw, 2 inches (50mm).

Torque Specification Chart						
FOR STANDARD MACHINE HARDWARE (Tolerance ± 20%)						
Hardware Grade	No Marks		SAE Grade 5		SAE Grade 8	
	SAE Grade 2		SAE Grade 5		SAE Grade 8	
Size Of Hardware	in/lbs		in/lbs		in/lbs	
	ft/lbs	Nm.	ft/lbs	Nm.	ft/lbs	Nm.
8-32	19	2.1	30	3.4	41	4.6
8-36	20	2.3	31	3.5	43	4.9
10-24	27	3.1	43	4.9	60	6.8
10-32	31	3.5	49	5.5	68	7.7
1/4-20	66	7.6	8	10.9	12	16.3
1/4-28	76	8.6	10	13.6	14	19.0
5/16-18	11	15.0	17	23.1	25	34.0
5/16-24	12	16.3	19	25.8	29	34.0
3/8-16	20	27.2	30	40.8	45	61.2
3/8-24	23	31.3	35	47.6	50	68.0
7/16-14	30	40.8	50	68.0	70	95.2
7/16-20	35	47.6	55	74.8	80	108.8
1/2-13	50	68.0	75	102.0	110	149.6
1/2-20	55	74.8	90	122.4	120	163.2
9/16-12	65	88.4	110	149.6	150	204.0
9/16-18	75	102.0	120	163.2	170	231.2
5/8-11	90	122.4	150	204.0	220	299.2
5/8-18	100	136	180	244.8	240	326.4
3/4-10	160	217.6	260	353.6	386	525.0
3/4-16	180	244.8	300	408.0	420	571.2
7/8-9	140	190.4	400	544.0	600	816.0
7/8-14	155	210.8	440	598.4	660	897.6
1-8	220	299.2	580	788.8	900	1,244.0
1-12	240	326.4	640	870.4	1,000	1,360.0

## NOTES

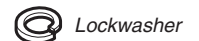
- These torque values are to be used for all hardware excluding: locknuts, self-tapping screws, thread forming screws, sheet metal screws and socket head setscrews.
- Recommended seating torque values for locknuts:
  - for prevailing torque locknuts - use 65% of grade 5 torques.
  - for flange whizlock nuts and screws - use 135% of grade 5 torques.
- Unless otherwise noted on assembly drawings, all torque values must meet this specification.

## Common Hardware Types

Hex Head Capscrew



Washer



Lockwasher

Carriage Bolt



Hex Nut

## Wrench & Fastener Size Guide

1/4" Bolt or Nut Wrench—7/16"	5/16" Bolt or Nut Wrench—1/2"	3/8" Bolt or Nut Wrench—9/16"	7/16" Bolt or Nut Wrench (Bolt)—5/8" Wrench (Nut)—11/16"	1/2" Bolt or Nut Wrench—3/4"
M6 Bolt or Nut Wrench—10mm	M8 Bolt or Nut Wrench—13mm	M10 Bolt or Nut Wrench—17mm	M12 Bolt or Nut Wrench—19mm	M14 Bolt or Nut Wrench—22mm



Not for  
Reproduction

**Briggs & Stratton Power Products Group**

Copyright© 2013 Briggs & Stratton Power Products Group. All rights reserved. No part of this page can be reproduced or transmitted in any form by any means without the express written permission of Briggs & Stratton Power Products Group.