



Thank you for purchasing your easy to install shelf bracket. In this short video you will find the step by step instructions to install your units

Click pause at anytime to complete each step.





# Step 1:

Please make sure you have the following tools so your installment process is smooth and simple.

What you will need:



Shelf brackets



Level



Screwdriver



Drill



Screws



Wall anchors



Stud finder





## Step 2:

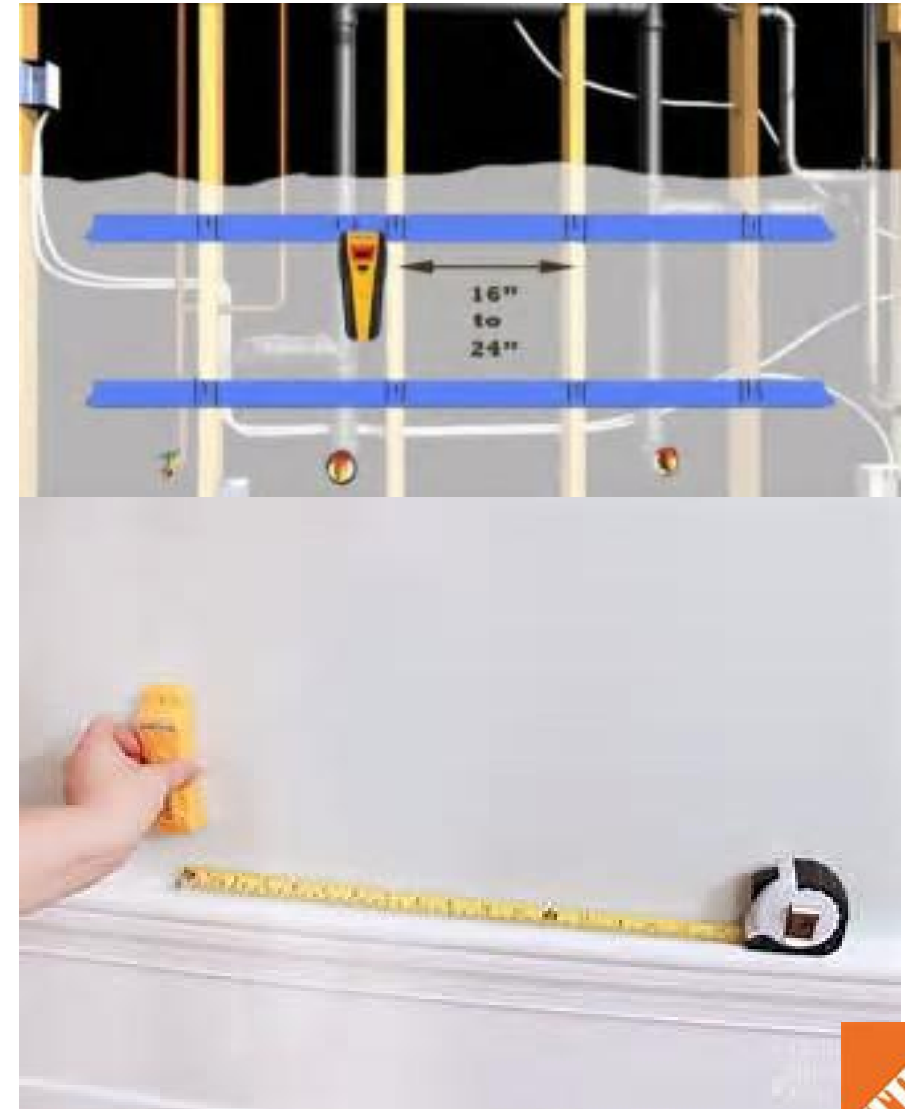
1. Locate the desired location for your shelf and with a pencil lightly mark your location
2. Whenever possible, attach brackets to wall studs
3. If studs are not accessible be sure to use wall anchors to secure your brackets
4. Save time by using an electronic stud finder to locate the studs





## Step 3:

1. Insert screws into the brackets and tighten until each bracket is secure
2. For heavy loads, attach a bracket to every stud along the entire span of shelving
3. House studs are found 16" to 24" apart





## Step 4:

1. Use a level to ensure that your shelf brackets are level and holes are evenly marked
2. Repeat Step 3 for the additional brackets needed





Thank you for your purchase and we hope you enjoy!

